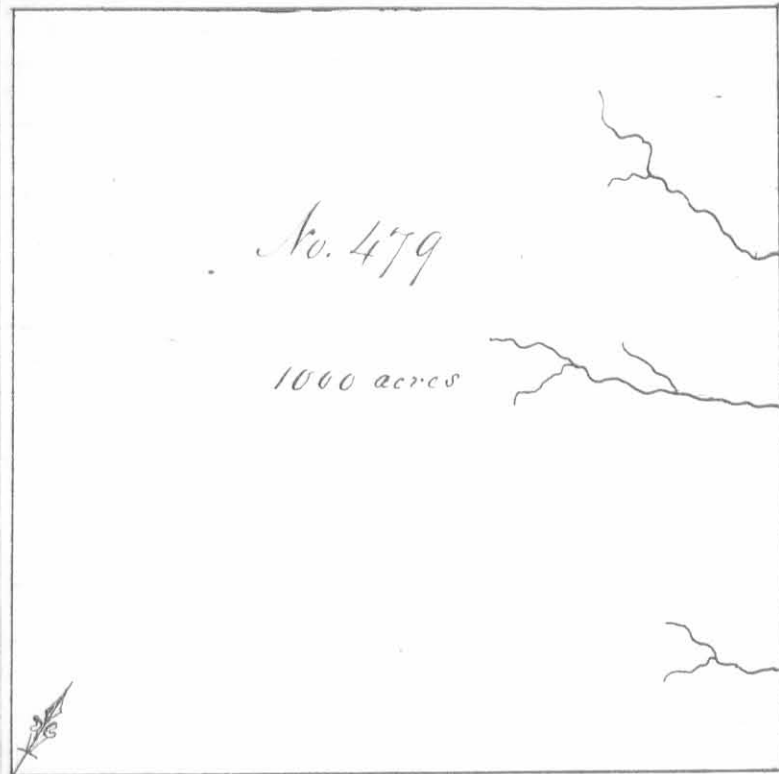


Note:

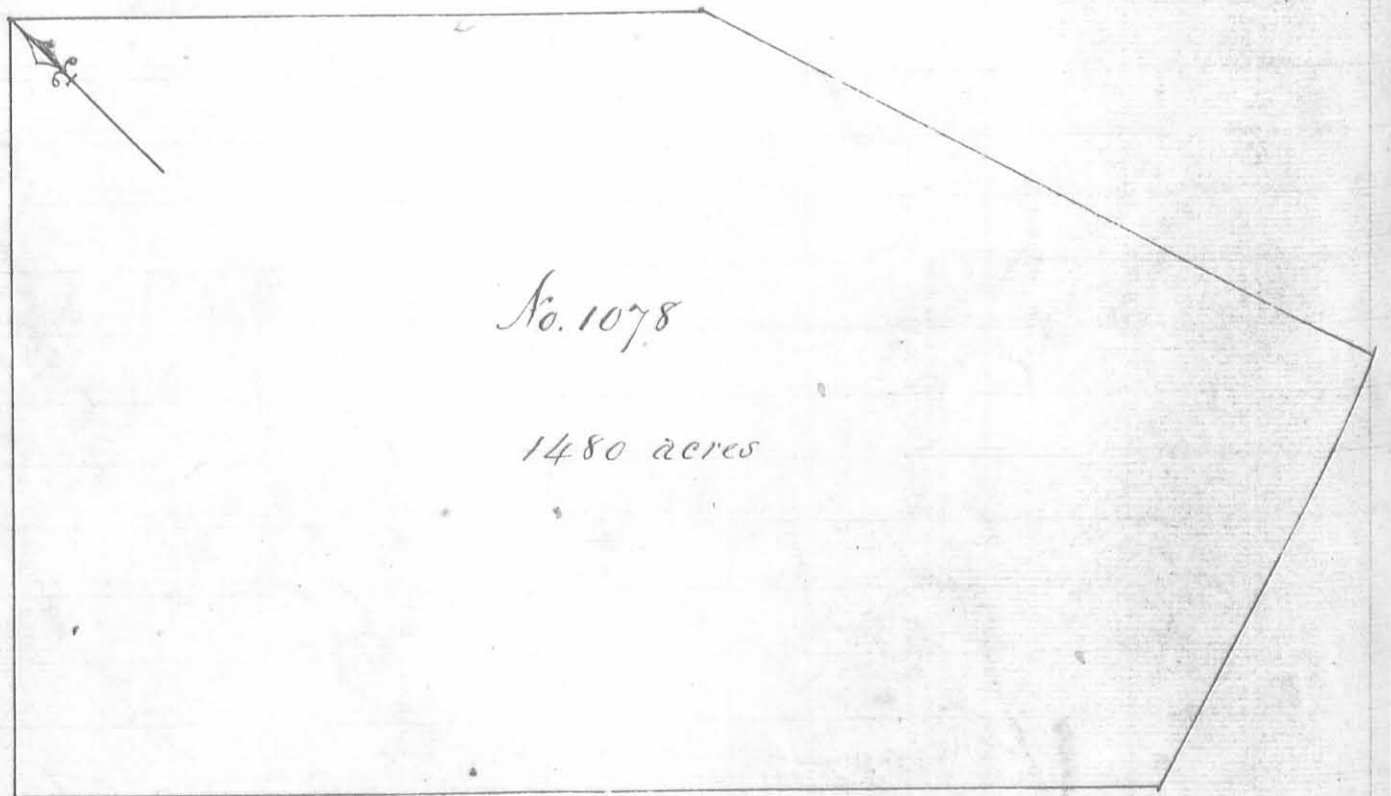
Page 81 is blank



Surveyed for David Duncan
 Apr^o 1000 acres of land on part
 of a Military Warrant No 214
 on the waters of Darlys Creek
 beginning at a hickory and
 sugar tree in the line of Lucas
 Sullivan's No. 3681 and south-
 west corner to Richard Stephen-
 sons No 3163, running with
 Stephensons line N. 37. N. 398
 poles crossing several drains
 to two Sugar trees Northwest
 corner to said Stephensons sur-
 vey, thence S. 53. N. 402 poles to two beech, thence S. 37. E. 398 poles to
 two beech and a sugar tree, thence N. 53. E. 402 poles to the beginning
 Lucas Sullivan's L.S.

Peter Murphy
 William Boyd ³/₃ C
 John Brule Mkr.

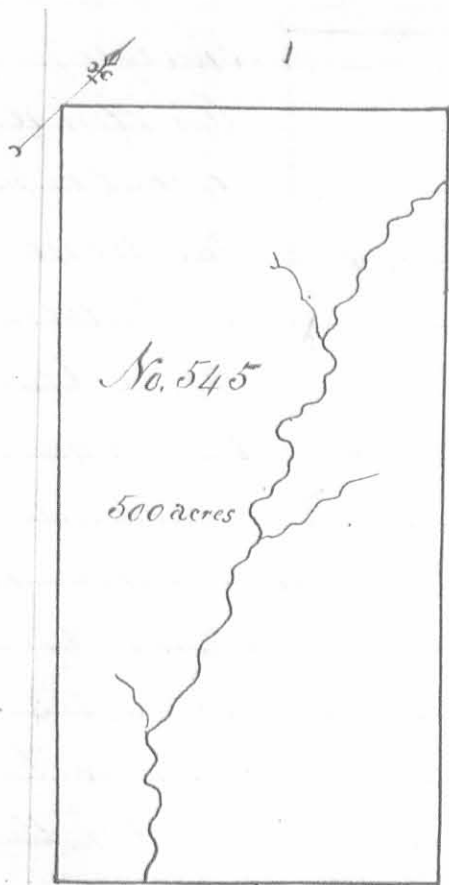
September 14th 1799
 September 27th 1799



Surveyed for Calohie Miami's 1480 acres of land on part of a military warrant No 2272
 on the waters of the State Miami: Beginning at a hickory and two dogwoods in the line of William Pearce
 survey No. 711, running S 45 E 362 poles with Pearce's line passing his corner at 80 poles to two
 small ash in the line of Peregrine Fitzhughes survey, No 2288, thence with said line S 17 E
 393 poles to a white oak, hickory and dogwood, southerly corner to Fitzhughes and corner
 to Robert Ballards survey No. 2351, thence with Ballards line S. 73, N. 242 poles to two
 hickories in Ballards line, thence N. 45 N. 595 poles to three hickories, thence N. 45 E 400 poles to
 the beginning.

John Hamilton ³/₃
 Arthur Dodson ³/₃ C. Edward Morely Mkr

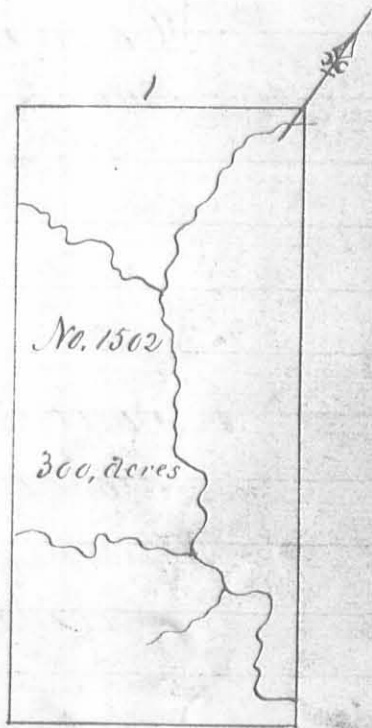
John Obannon D.S
 July 8. 1796
 April 19th 1797



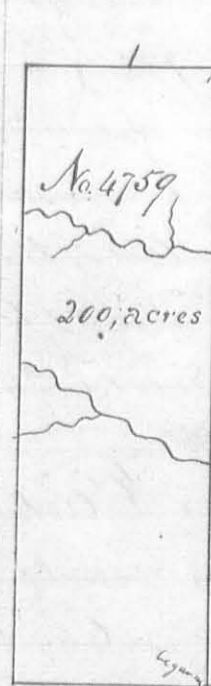
Surveyed for Thomas Sears 500 acres of land on part of a Military warrant No. 2418 on the waters of Darby's Creek; beginning at three buckeyes from one root and an elm, easterly corner to Philip Slaughters survey No. 3154, thence N. 52 E. 200 poles to a sugar tree, ash and beech, thence S 38 E 400 poles crossing a branch to two beeches and a sugar tree, thence S. 52 W. 200 poles crossing a branch to two sugar trees and an Elm easterly corner to George McCardies survey No. 3155, thence with his line N. 38. W. 400 poles to the beginning.

Set Sharp
John Sharp 3/66
John M'Donalds Mkr.
Duncan McArthur D.S.
April 1. 1806
May 5. 1806

James
Surveyed for John Denny of a 300 acres of land on a military warrant No. 275 and part of No. 2755 on the waters of Darby's creek; beginning at two beeches southerly corner to Lucas Sullivants survey No. 3681, running with his line N. 37 W. 320 poles, crossing two branches to a lynn and buckeye corner to said Sullivants survey, thence S 53 W. 150 poles to two sugar trees, thence S. 37. E. 320 poles crossing several branches to two sugar trees and a hickory; thence N. 53. E. 150 poles to the beginning.

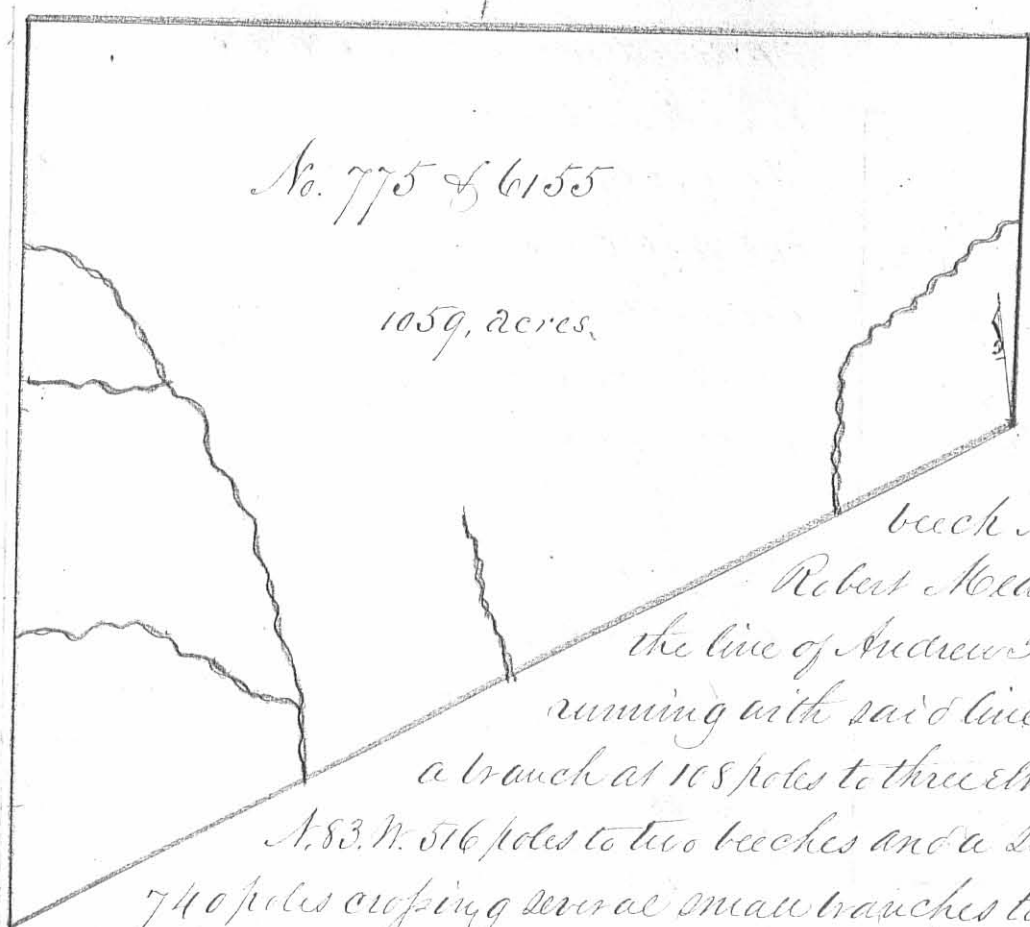


William Gibson
Henry Sturms 3/66
John Popeau Mkr.
James Gallaway D.S.
June 8th 1806
June 10th 1806



Surveyed for Thomas Campbell of a 200 acres on a military warrant No. 2793 on the waters of Darby's Creek; beginning at two sugar trees and a hickory southerly corner to James Denny's survey No. 1502, running with his line N. 37 W. 320 poles crossing two branches to two sugar trees corner to said Denny's survey, thence S. 53 W. 100 poles to two elms and a hickory, northerly corner to Benjamin Popeau's survey No 4658 and 4678, thence with his line S. 37 E. 320 poles crossing several branches to a sugar tree corner to said Popeau's survey, thence N. 53, 100 poles to the beginning.

William Gibson
Henry Sturms 3/66
John Popeau Mkr.
James Gallaway D.S.
June 8th 1806
June 10th 1806



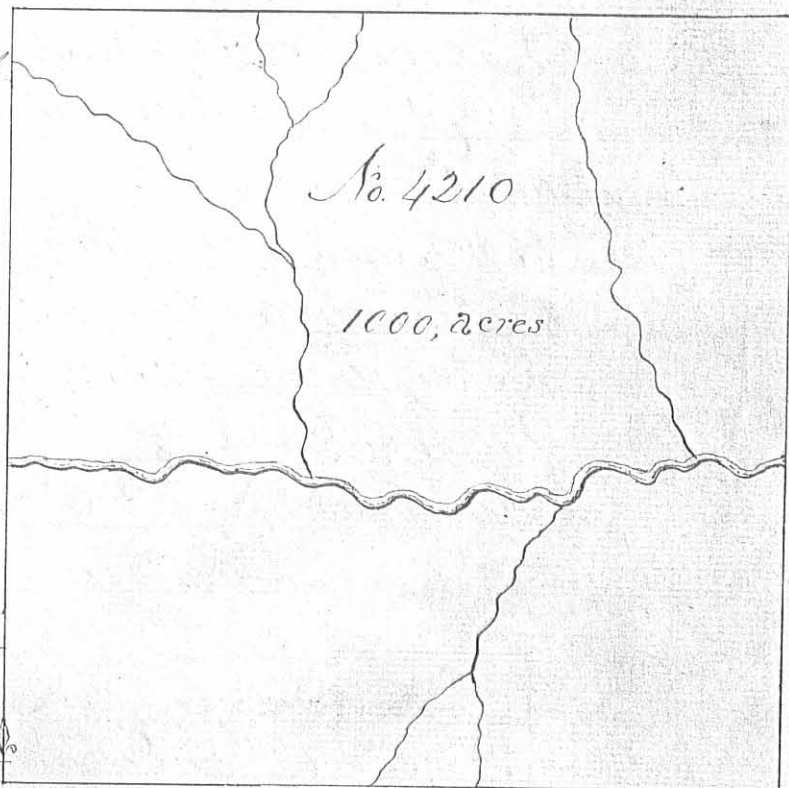
Surveyed for Thomas Chilton 1059 acres of land on part of a military warrant No. 1249 on the waters of Meile Creek; beginning at three sugar trees and a beech Northeastly corner to Robert McLean's Survey No. 5092 in the line of Andrew Fortunes Survey No. 2982 running with said line N. 7. E. 203 poles crossing a branch at 108 poles to three elms and a hickory, thence N. 83. W. 516 poles to two beeches and a sugar tree, thence S. 7. W. 740 poles crossing several small branches to two beeches and two sugar trees Northeast corner to Strother Jones survey No. 4210 and North westerly corner to said McLean's survey; thence with McLean's line N. 70 E. 580 poles crossing several small branches to the beginning.

David Sharp
William Kenny J.C.C.
Joseph Keyner, Mkr.

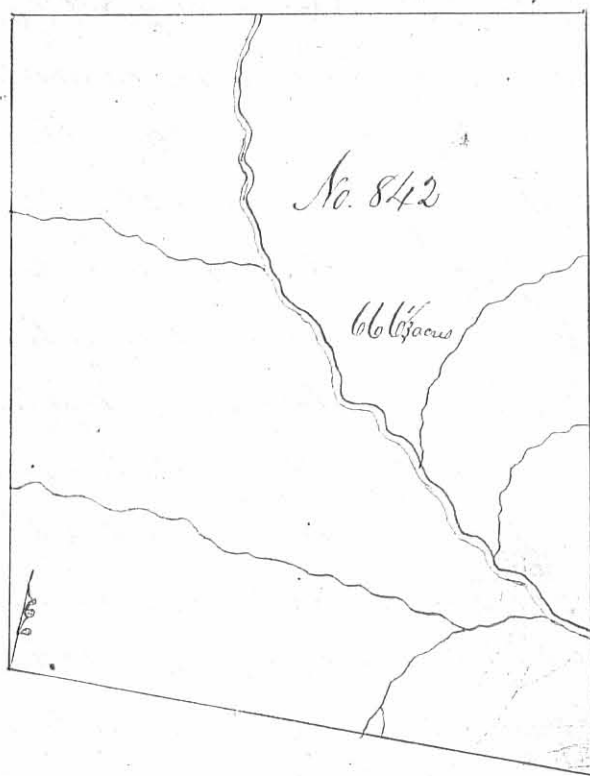
Duncan McArthur D.S.
March 20th 1809
May 11th 1809

Surveyed for Strother Jones 1000 acres of land on part of a Military warrant, No. 88, on Meile Creek Beginning at a hickory, ash, and, Lymu, Northeast corner to Robert McLean's Survey No. 5091 running North 400 poles crossing a branch at 158; Meile creek at 166 and a large branch at 368 poles, to an ash hickory and buck eye; thence East 400 poles, crossing several small branches to two beeches and two sugar trees; thence South 400 poles crossing the creek at 230 poles to two sugar trees and a large hickory, thence West 400 poles crossing several small branches to the beginning.

George Steer
Richard Mammock J.C.C.
Aaron Brown Mkr.



Duncan McArthur D.S.
November 20th 1808
May 11th 1809



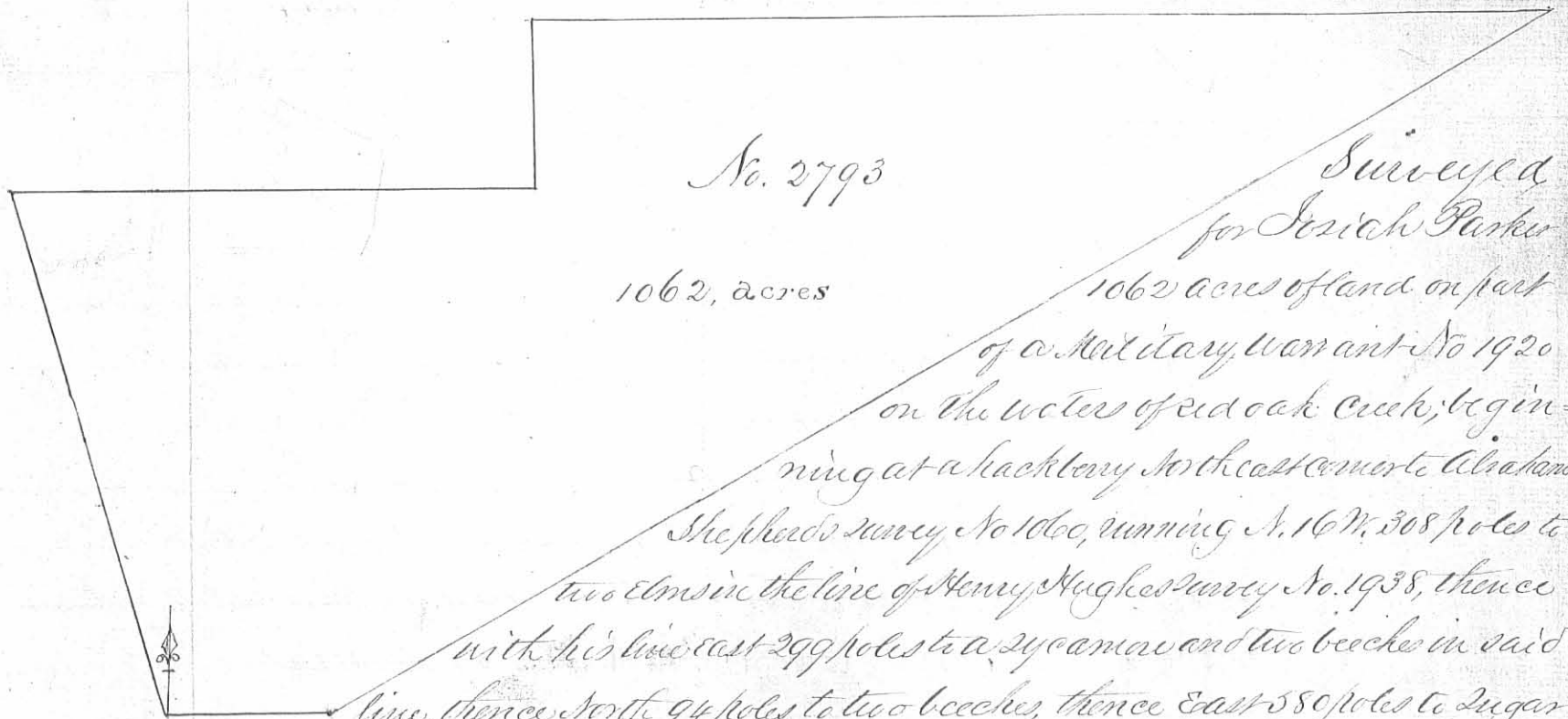
Survey for Daniel Bedinger 66 6/100 acres of land on part of a Military Warrant No. 2211 on Mill Creek; beginning at two beeches and a sugar tree north west corner to John McDonalds survey No. 5089 in the line of survey No. 3325, running with said line No. 340 poles crossing a branch at 92 p. and one at 238 poles to a beech ash and white oak, South west corner to Charles Humphreys survey No. 3472, thence with the lower line of said Humphreys survey and corner

thence N. 80 E. 300 poles crossing the creek at 125 poles to a sugar tree and two large ashes, thence S. 10 E. 395 poles crossing several small branches and Mill creek to three hickories on the north side of a branch in the line of said McDonalds survey, thence with said line west 304 poles crossing a branch at 110 and one at 124 poles to the beginning.

Duncan McArthur D.S.

November 22nd 1808

December 12th 1809



No. 2793

1062, acres

Surveyed for Josiah Parker

1062 acres of land on part of a Military Warrant No. 1920

on the waters of red oak Creek; beginning at a hackberry northeast corner to Abraham

Shepherds survey No. 1000, running N. 16 W. 308 poles to two elms in the line of Henry Hughes survey No. 1938, thence

with his line east 299 poles to a sycamore and two beeches in said line, thence north 94 poles to two beeches, thence east 580 poles to sugar

tree, hackberry and elm in the line of said Parkers No. 1703, thence with said line passing his corner at 430 poles S. 61 W. 812 poles with the line of John Keith survey No.

1700 to a buckeye and beech in the line of said Shepherds survey, thence with his line west 94 poles to the beginning

William Jacobs

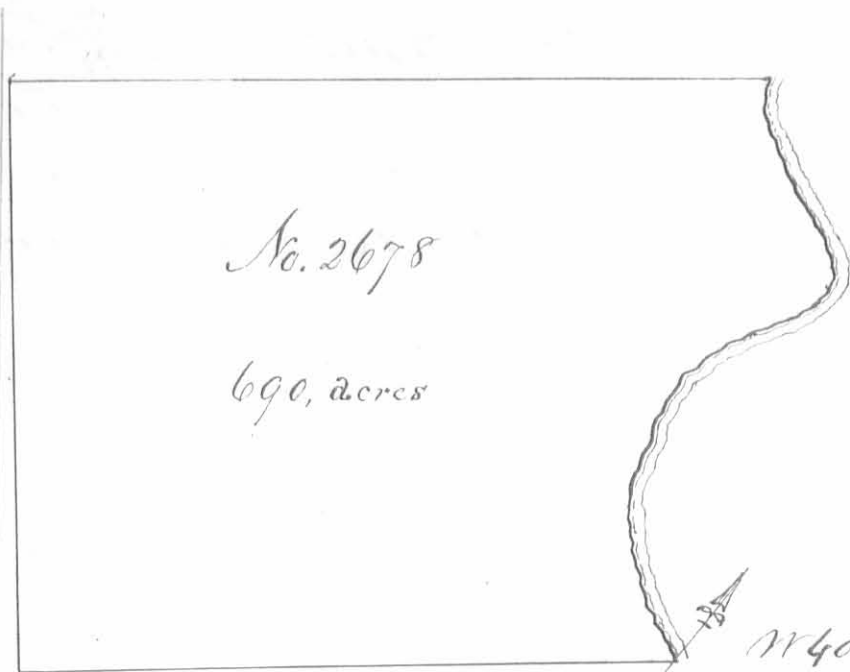
James Jacobs

Philamon Thomas, M.R.

Nathaniel Bailey D.S.

December 21st 1803

February 27th 1807



Surveyed for Oliver Towles
690 acres of land on part of
a military warrant No.
855 on the lower side of
Darby's creek; Beginning
at a honey locust and
two elms upper corner to
said Towles survey No 2677
running up the creek N. 75
W. 40, N. 50 W. 30, N. 32, W. 30, N. 12, W. 40

North 30. N. 27, E. 72 - N. 30 W. 20, N. 62 W. 78, N. 45 W. 20, N. 15 W. 10 poles to a white
oak, red oak and sugar tree, thence S 53 W. 395 poles to two elms, thence
S 37 E. 310 poles to two ash, and a hickory, thence N. 53. E. 346 poles to the
beginning.

John Ellison 3

Robert Dixon 3 C.C.

John Flemming Mtr

Lucas Sullivan D.S.

October 6th 1796

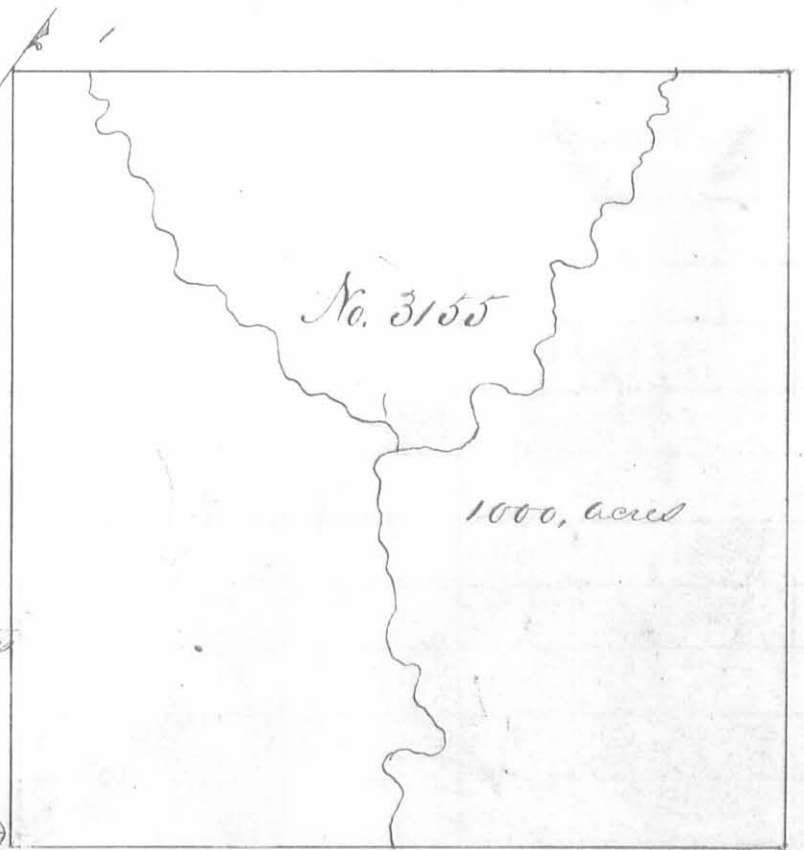
December the 9th 1796

Surveyed for George McCordie
ap^r 1000 acres of land on two
Military Warrants No 169,
4673 and part of 4728 on Beaver
run a branch of Darby's Creek:
Beginning at a poplar ash
and hickory, South East corner
to Philip Slaughters survey
No. 3154, running with Slaughters
line N. 52, E. 400 poles crossing
a branch at 40 and Beaver run
at 340 poles to three buckeyes and
an elm, thence S, 38, E 400 poles to two sugar trees an and elm,
thence S, 52 W. 400 poles crossing Beaver run at 200 poles to two
buckeyes, thence N, 38, W. 400 poles to the beginning.

George Mollonay 3

Thomas Treacle 3 C.C.

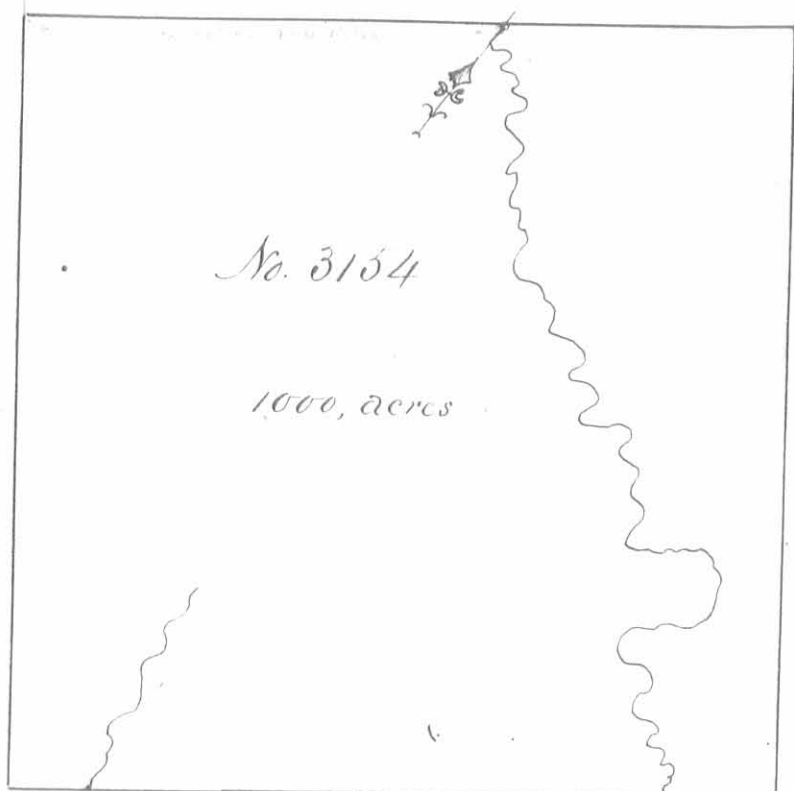
George Bennett Mtr



Lucas Sullivan D.S.

December 20th 1797

April 2nd 1798



Surveyed for Philip Slaughter
 1000 acres of land on several military
 warrants, No 4590, 4602, 3759,
 3561 and part of leg on Beaver run
 a branch of Darty's Creek; Begin-
 ning on said run at two ash and
 a beech marked L.S. 1797 about
 120 poles on a direct line from
 the mouth of said run, running
 S. 52, N. 250 poles, crossing a branch
 several times to a large white
 ash, lymu and sugar tree, thence
 S. 38 E. 400 poles, to a poplar ash

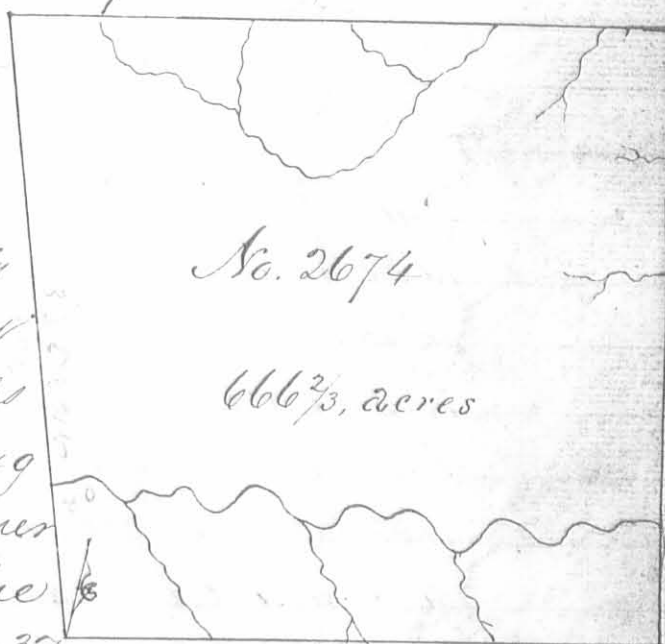
and hickory, thence N. 52, E. 400 poles, crossing Beaver run to three
 buckeye and an Elm, thence N. 38, W. 400 poles to three hickories
 thence S. 2, W. 150 poles, crossing Beaver run three times to the be-
 ginning.

Thomas Maack
 George Holloway C.C.
 George Pennell, Mkr.

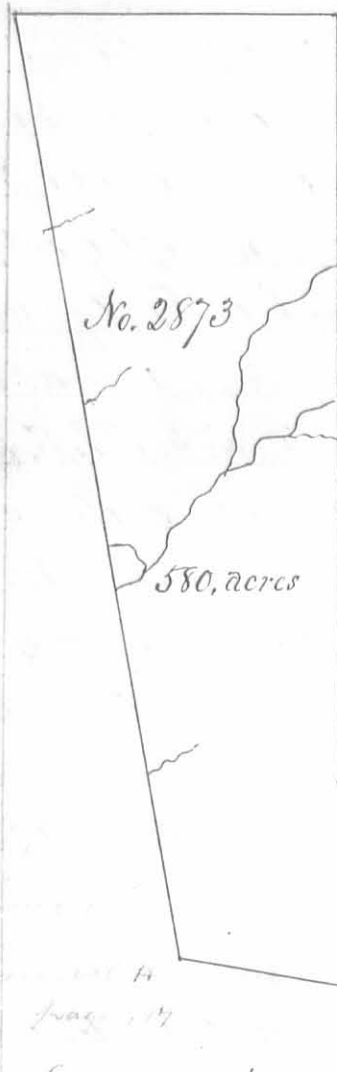
Sucas Sullivan D.S.
 December 20th 1797
 April 6th 1798

Surveyed for Thomas Holt 666²/₃
 acres of land on a military warrant
 No. 4640, on the waters of Head River
 and Mill Creek; beginning at a
 buckeye and white walnut easterly
 corner to David Bradfords survey
 No. 3136, running N. 16. W. 328 poles
 with Bradfords upper line crossing
 a branch at 80 and passing his corner
 at 160 poles, to two beeches in the line
 of Mician Cochraus survey, No. 3437
 thence with his line and with the line of said Cochraus survey No. 34
 36 N. 80 E. 345 poles, crossing several branches to a large black
 walnut and elm, thence S. 10. E. 325 poles, crossing several branches
 to two hickories and a lymu, thence S. 80. W. 312 poles crossing several small
 branches to the beginning

John McDonald
 John McCollum C.C.
 John Aiken Mkr.



Duncan McArthur D.S.
 December 20th 1804
 February 15th 1805



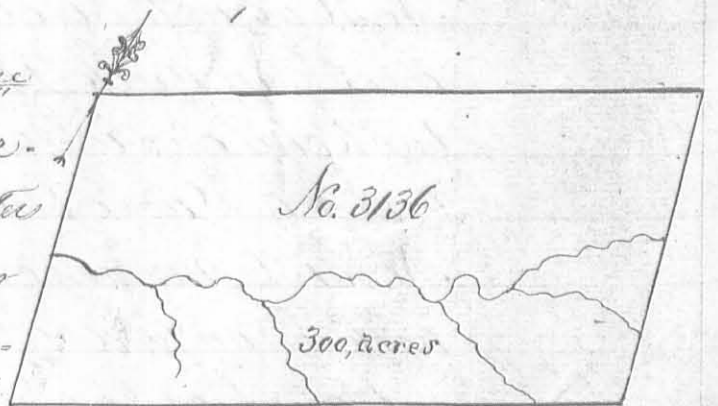
Surveyed for Samuel Wallace his at law to Adam Wallace dec'd 580 acres of land on part of a Military Warrant No. 3195 on the waters of Stony Creek; beginning at three white oaks, northeasterly corner to Thomas Northingtons survey, No. 4399, in the line of Robert Powers survey No. 3683, thence with said line N. 10. W. 150 poles crossing a branch to a red oak hickory and sugar tree, northwesterly corner to said Powers survey in the line of the Representatives of James Parks survey No. 3317, thence with said line S. 80. W. 258 poles crossing several branches to a stake southwesterly corner to said Parks survey in the line of William Miller survey No. 3324, thence with his line and course thereof S. 80. W. 167 poles to a stake in

Sualows line; thence with said line S. 20. E. 496 poles crossing several branches to two burr oaks, thence east 346 poles crossing several branches and passing the Northwest corner of said Northingtons survey at 276 poles and with his north line to the beginning.

Colin McCollum
John McDonald
Samuel McCulloch Mkr.

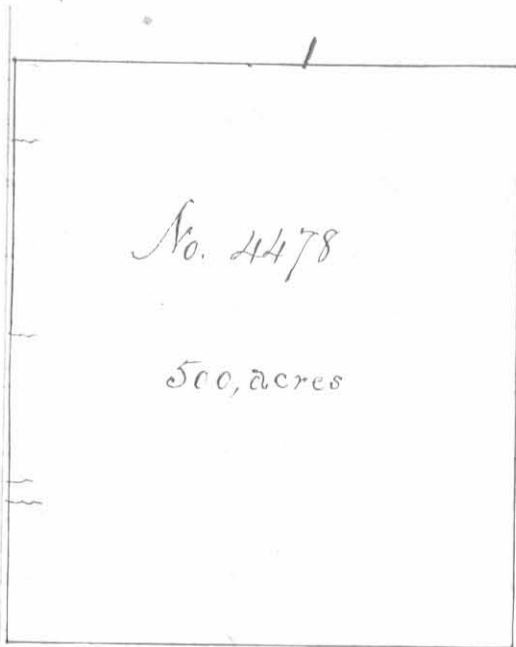
Duncan McArthur, D. S.
Oct. 30th 1806
April 24th 1807.

Surveyed for David Bradford of 300 acres of land on three Military Warrants No 4012, 4032 and 4238 on the waters of Mead river, beginning at two sugar trees in the East line of James Calderwoods survey, No. 3139 running with his line S. 16. E. 160 poles crossing the branch on which Isaac Jones made sugar in the year --- at 80 poles to two beeches and an Ironwood, thence N. 58. E. 315 poles crossing several small branches to a buckeye, white walnut and an ash, thence N. 16 W. 160 poles crossing the branch at 80 poles to two Ironwoods and a beech, thence S. 58 W. 315 poles to the beginning.



John McDonald
Colin McCollum
John Asher Mkr.

Duncan McArthur D. S.
October 31st 1804
February 10th 1805

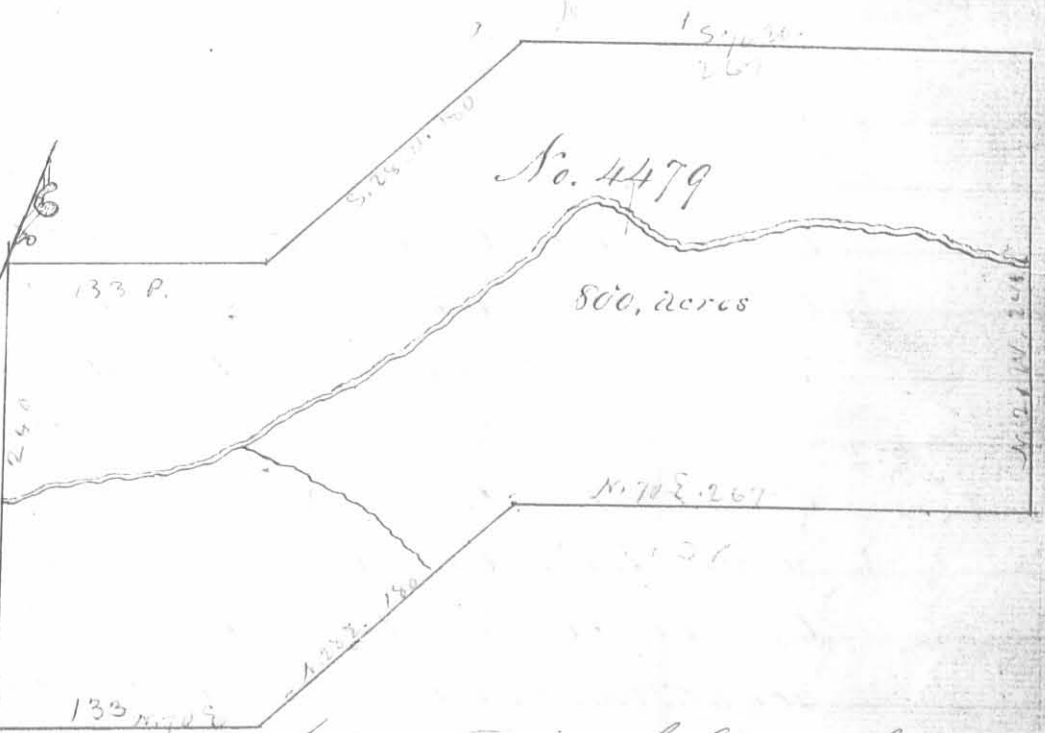


Surveyed for Alexander S Dandridge, 500 acres of land on part of a military warrant No. 1287 on the waters of big Miami; beginning at a sugar tree beech and hickory, northwest corner to said Dandridges survey No 3220 running with his line South 300 poles crossing a small branch, to a beech, white oak sugar tree and cherry tree, thence west 267 poles to a dogwood and black walnut; thence North 300 poles crossing a branch at 174 poles at 158 and one at 260 poles to three sugar trees, thence East 267 poles crossing several branches to the beginning.

John McDonald
 John M^cCollum C.C.
 John Astew Mkr.

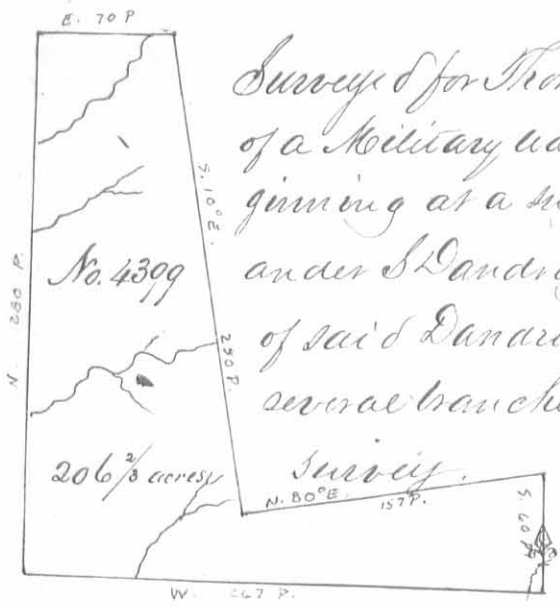
Duncan McArthur D.S.
 October 30th 1804
 February 15th 1805

Surveyed for Thomas Worthington 800 acres of land on part of a Military Warrant No. 4972 on Ten Lons Creek a branch of Mac river. Beginning at a white oak marked 30M in the line run by Israel Sutherland from the head of the little Miami, towards the head of the Scioto running with said line S. 20 E. 240 poles crossing the creek at 120 poles to two white oaks, thence N. 70 E. 133 poles to three hickories, thence N. 28 E. 180 poles crossing a branch to a stake, thence N. 70 E. 267 poles to three black oaks; thence N. 20 N. 240 poles, crossing the creek at 120 poles to two white oaks, a hickory and elm, thence S. 70 N. 267 poles to four hickories, thence S. 28 N. 180 poles to two black oaks and a cherry tree, thence S. 70 N. 133 poles to the beginning.



John McDonald
 John M^cCollum C.C.
 John Astew Mkr.

Duncan McArthur D.S.
 October 29th 1804
 February 22nd 1805

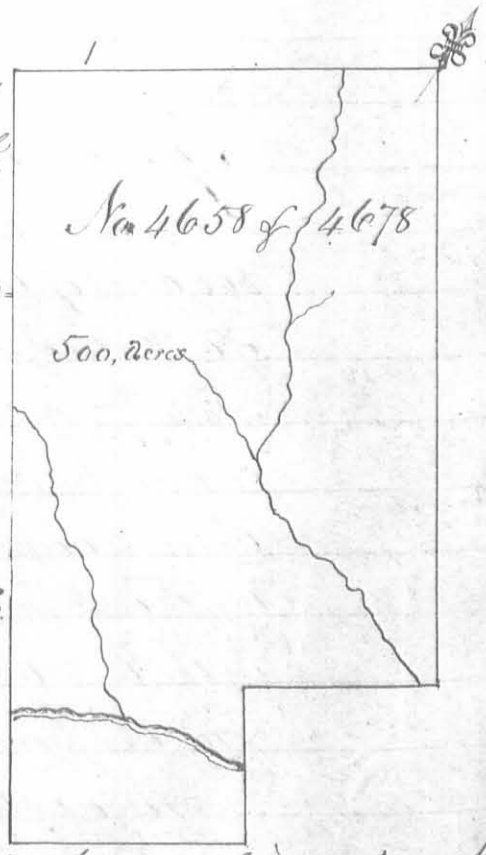


Surveyed for Thomas Worthington ap^{pr} 206²/₃ acres of land on part of a Military warrant No. 4972 on the waters of big Miami: Beginning at a sugar tree beech and hickory northwest to Alexander S Dandridges survey No 3220, running with the line of said Dandridges survey No. 4478, West 267 poles crossing several branches to three sugar trees corner to said Dandridges thence North 280 poles crossing a branch at 80 one at 180 and one at 220 poles to two Lymus and a white walnut, thence East 70 poles crossing a branch at 60 poles to three white oaks in the line of Robert Powers survey No. 3683, thence with his line S. 10. E. 250 poles crossing a branch at 160 and one at 245 poles to two Lymus, two sugar trees and an elm south west corner to Powers survey, thence with another of his lines N. 80. E 157 poles to a red oak and white oak, thence south 60 poles crossing a branch to the beginning.

John McDonald 3
 Colin McCallum 3 C.C.
 John Aker Mkr.

Duncan McArthur D.S.
 October 30th 1804.
 February 22nd 1805.

Surveyed for Benjamin Pajseau ap^{pr} 500 acres of land on part of a military warrant No. 5023 on the waters of Darby Creek: Beginning at two elms and a hickory easterly corner to John Holmes survey No. 4263 in the line of David Duncans survey No. 479, running with Duncans line passing his corner and with the line of Clayton Yanceys survey No 3688 passing his corner, S. 53, N. 220 poles crossing a branch at 50 poles to three sugar trees; thence S. 37, E. 400 poles crossing a branch and a creek at 338 poles to a red oak, elm and sugar tree, thence N. 53. E 120 poles to three sugar trees, thence N. 37, N. 80 poles crossing the creek to two sugar trees, thence N. 53. E. 100 poles crossing a branch at 90 poles to a sugar tree in the line of Thomas Millers survey No 4650, thence with his line N. 37, N. 320 poles to the beginning.



William Gibson 3
 Henry Sturms 3 C.C.
 John Pajseau Mkr.

James Gallaway Junr D.S.
 May 6th 1805
 May 7th 1805