

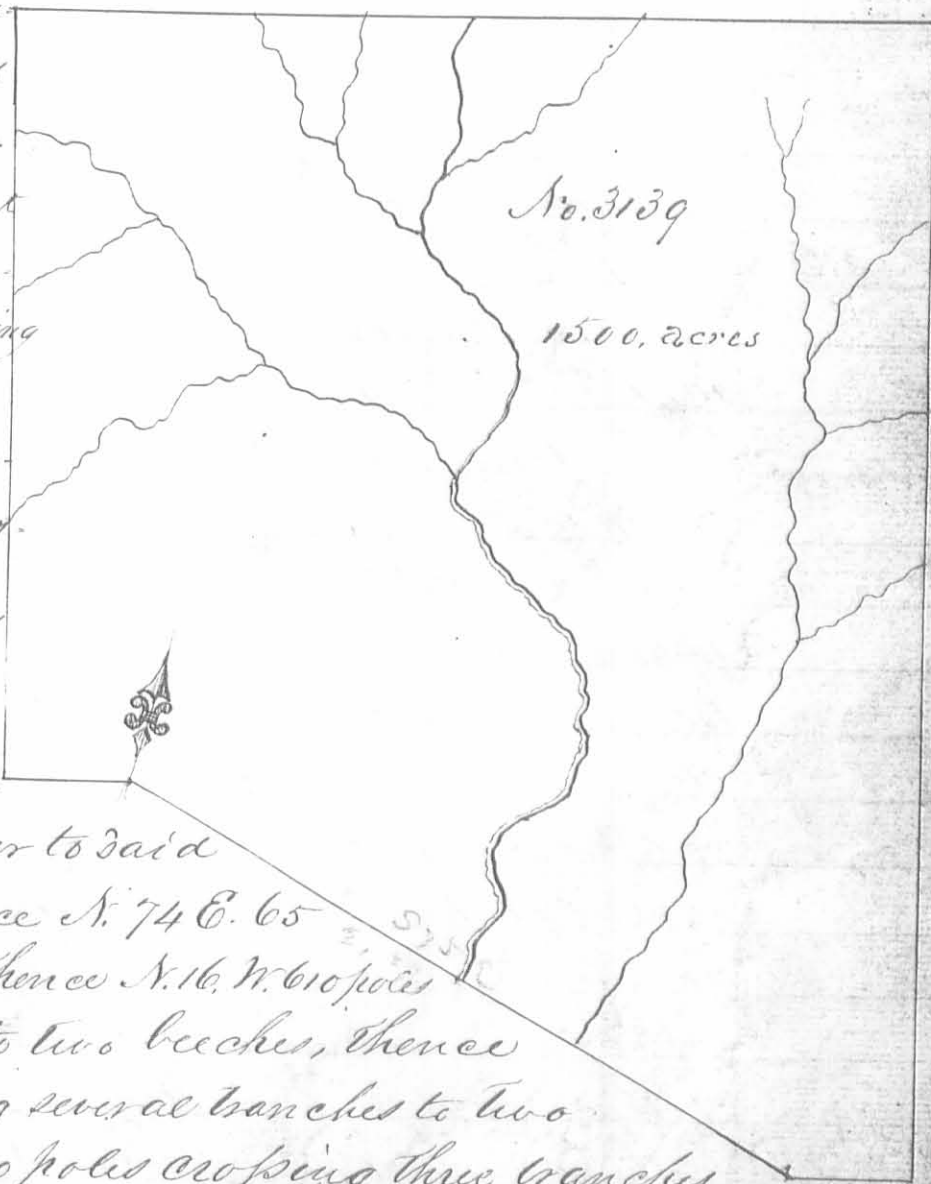
Surveyed for the Representatives of James Calderwood dec^d 1000 acres of land on part of a military warrant No. 4799 on the head branch of Mead river: Beginning at two red oaks running S. 75. E. 400 poles crossing Mead river to an ash and sugar tree. thence N. 15. E. 400 poles crossing two branches to a sugar tree an elm. thence N. 75. W. 400 poles crossing the sugar camp branch and the river to two sugar trees, thence S. 15. W.

400 poles crossing two branches to the beginning.

William Proctor
Gregory Fayans & Co
Philip Metherstough M^r

Lucas Sullivant D^S
April 10th 1798
September 26th 1799

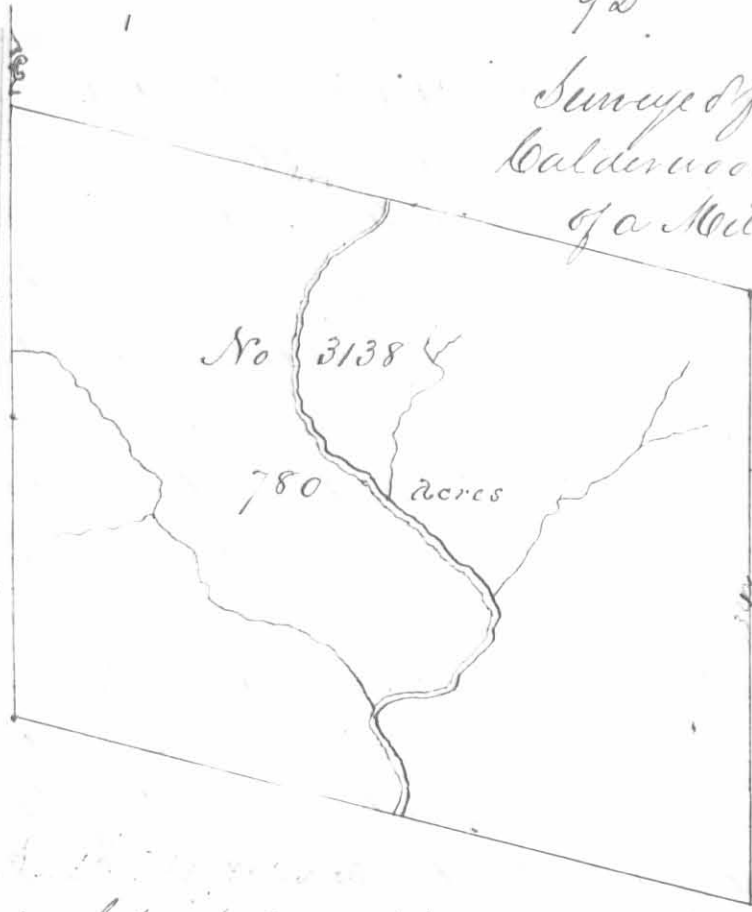
Surveyed for the Representative of James Calderwood dec^d 1500 acres of land on part of a military Warrant No. 4799 on the head branches of Mead river: Beginning at two sugar trees North west corner to said Calderwoods survey No 3137, running S. 75. E. 400 poles crossing the head branch of Mead river and sugar camp branch to a sugar tree and elm north east corner to said Calderwoods survey, thence N. 74 E. 65 poles to two sugar trees, thence N. 16. W. 610 poles crossing three branches to two beeches, thence S. 74. W. 480 poles crossing several branches to two beeches, thence S. 16 E. 400 poles crossing three branches to a dogwood and hickory; thence N. 74 E. 65 poles to the beginning.



William Proctor
Gregory Fayans & Co.
Philip Metherstough M^r

Lucas Sullivant D^S
April 10th 1798
September 26th 1799

Survey for the Representatives of James Calderwood dec^d 780 acres of land on part of a Military Warrant No. 4799 on the head branch of Mad river; beginning at



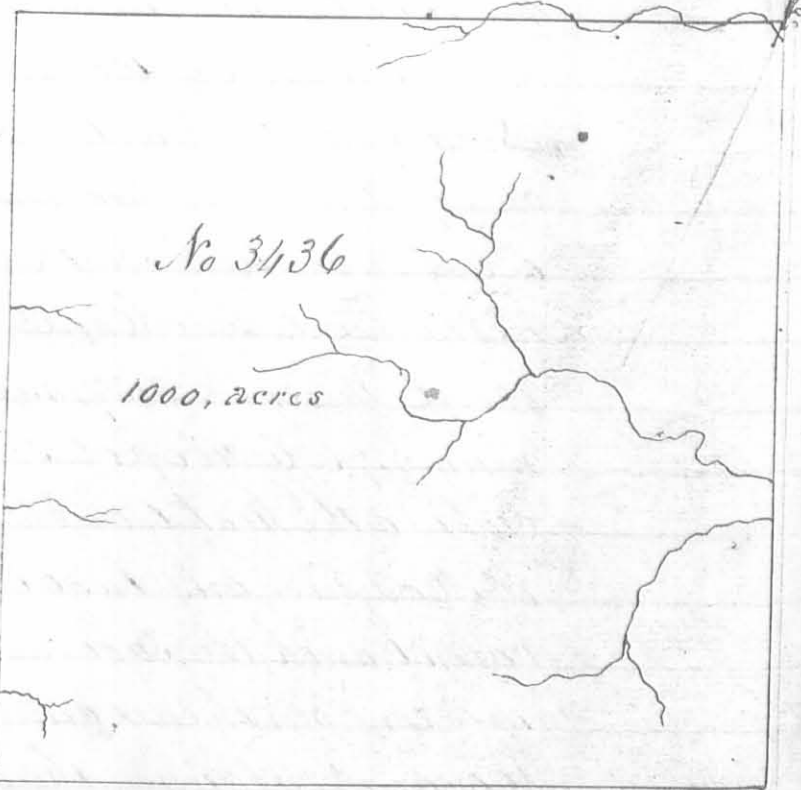
Two red oaks, Southwest corner to said Calderwoods survey No 3137 running with his lower line S. 75 E. 400 poles crossing Mad river to an ash and sugar tree Southeast corner to said Calderwoods survey, thence South 320 poles to a hickory and ash, thence N. 75. W. 400 poles crossing the river to a stake, thence

North 320 poles crossing a branch to the beginning.

William Proctor
Gugly Jagers 3 C.C.
Philip Motherstough Mkr.

Lucas Sullivan D.S.
April 10th 1798
September 26th 1799

Survey for William Cochran a part 1000 acres of land on part of a Military Warrant No. 55 on the waters of Mill Creek a branch of Scioto, beginning at two sugar trees and a beech Southeast corner to William Millers survey No 3325 running S. 10. E. 400 poles crossing a branch at 10, one at 240 and one at 262 poles to two large burr oaks an ash and sugar tree, thence S. 30. W. 400 poles to two beeches and a sugar tree, thence N. 10. W. 400 poles crossing several drains to a hickory poplar and Syc, Southeast corner to said Millers survey No. 3326 and Southwest corner to said Millers survey No. 3325, thence with the line of the last mentioned survey N. 80 E. 400 poles crossing a branch several times to the beginning.



Peter Murphy 3
William Boyd 3 C.C.
John Brittle Mkr.

Lucas Sullivan D.S.
April 4th 1799
September 26th 1799



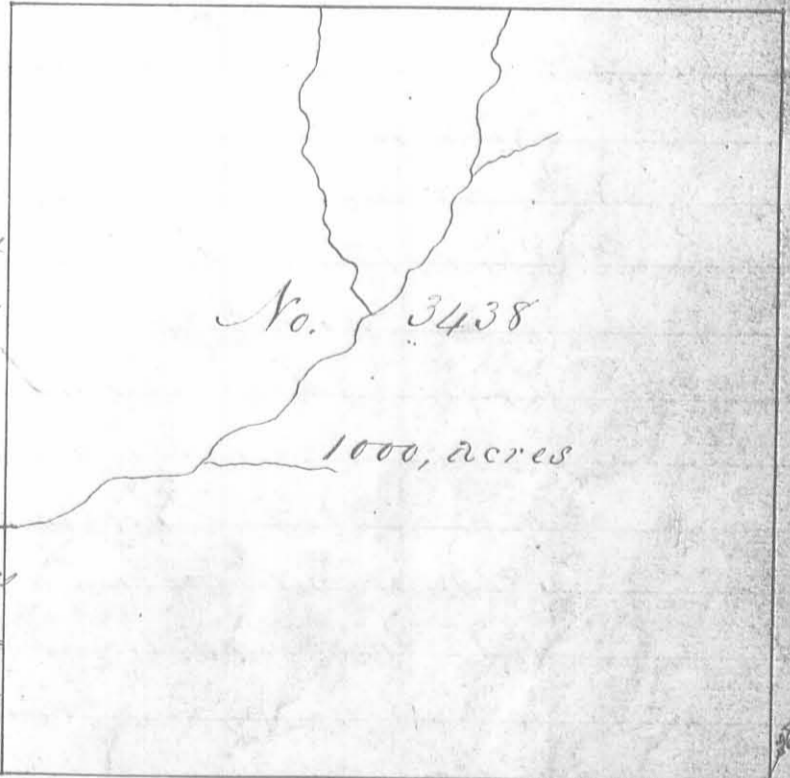
Surveyed for William Cochran
 approx 1000 acres of land on part of a
 Military warrant No. 55 on the
 waters of Mill creek a branch
 of Scioto; beginning at two beeches
 and a sugar tree, southwest cor-
 ner to said Cochran's survey No.
 3436 running with his line N
 10 W 400 poles crossing several
 branches to a hickory poplar
 and cypress, northwest corner to
 Cochran's survey southwest
 corner to William Millers sur-
 vey No. 3325 and southeast cor-

ner to said Millers survey No. 3326, thence with the line of said Mil-
 lers survey No. 3326 S. 80 W. 400 poles to three cypresses southwest cor-
 ner to said survey and southeast corner to said Millers survey No. 3327
 thence S. 10 E. 400 poles to two beeches, thence N. 80 E. 400 poles crossing
 two branches to the beginning

Peter Murphy
 William Boyd C. C.
 John Brittle mkr.

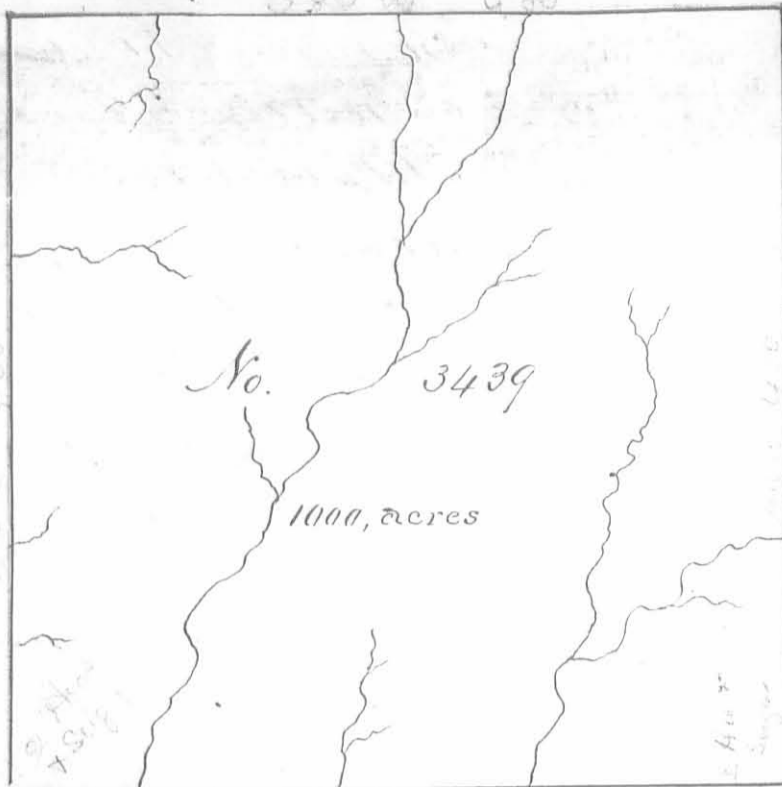
Lucas Sullivan D.S.
 April 4th 1799
 September 26th 1799

Surveyed for William Cochran
 approx 1000 acres of land on part
 of Military warrant No. 55
 on the waters of Mad river. be-
 ginning at two beeches southwest
 corner to said Cochran's survey
 No. 3437 running with his line
 N. 10. W. 400 poles to three cypresses
 northwest corner to said survey
 southwest corner to William Millers
 survey No. 3326 and southeast cor-
 ner to said Millers survey No. 3327
 thence with the line of the last men-
 tioned survey S. 80 W. 400 poles crossing two branches to a white oak
 ash and hickory, southwest corner to said Millers survey No. 3327 and southeast corner to John
 Scott's survey No. 3441, thence S. 10 E. 400 poles crossing a branch to two hickories and a sugar tree, thence N. 80
 400 poles to the beginning.



Peter Murphy
 William Boyd C. C. John Brittle mkr.

Lucas Sullivan
 April 4th 1799
 September 26th 1799



Surveyed for William Cochran
 apr^l 1000 acres of land on part of a
 Military warrant No. 33 on the
 waters of Moad river; beginning
 at two hickories and a sugar tree
 southwest corner to said Cochran's
 survey No. 3438, running with his
 line N. 10. W. 400 poles crossing a
 branch to a white oak ash and hick-
 ory northwest corner to said Coch-
 ran's survey southwest corner to
 William Miller's survey No. 3327

and southeast corner to John Scott's survey No. 3441, thence with Scott's line
 passing his corner and with the line of said Scott's survey No. 3442 S. 80 W. 400
 poles crossing several branches to a red oak white oak and hickory in
 Scott's line, thence S. 10. E. 400 poles crossing three branches to two hickories
 and a sugar tree, thence N. 80. E. 400 poles crossing several branches to the
 beginning.

Peter Murphy 3
 William Boyd 3 C. C.
 John Britton M. L. V.

Lucas Sullivan D. S.
 April 4th 1799
 September 26th 1799

Surveyed for George McCordie apr^l
 1000 acres of land on nine Military
 Warrant No. 4776. 2840. 4753. 4814. 4782
 4812. 4813. 4788 and 2839 on Mill Creek
 Beginning at three beechs and an
 ash on the east bank of the creek
 running S. 10. E. 400 poles crossing
 the creek at 20 a branch at 120 and
 at 180 and one at 390 poles to a beech
 ash, white oak and hickory, thence
 S. 80. W. 400 poles crossing a branch
 to two large sugar trees, thence N
 10 W. 400 poles crossing two branches
 to three sugar trees and a hickory, thence N. 80. E. 400 poles crossing a large
 branch at 220 poles and the creek to the beginning.



Peter Murphy 3
 William Boyce 3 C. C.
 John Britton M. L. V.

Lucas Sullivan D. S.
 April 3^d 1799
 September 16th 1799

No. 3161
188 2/3 acres

Surveyed for George McCredie apr 188 2/3 acres of land on part of a Military warrant No. 4758 on the waters of Beaver run a branch of Darby's Creek; Beginning at a large white ash, lynn and sugar tree northwest corner to Philip Staughters survey No. 3154 running S. 52 W. 222 poles to two beechs thence N. 38 W. 135 poles to two beechs, thence N. 52 E. 222 poles to two sugar trees, thence S. 38 E. 135 poles to the beginning.

Phillip Mootherbough 2
Robert Silvy 3
Abraham Riddle m.k.r.

Lucas Sullivan D.S.
September 11th 1799
September 16th 1799

Surveyed for Holland Coney 640 acres of land on part of a Military Warrant No. 2504 on the waters of Mad River, beginning at two black oaks, a cherry tree and white oak, running S. 21 E. 320 poles to two black oaks, thence N. 69 E 320 poles to an ash and sugar tree, thence N. 21 W. 320 poles to a red oak and ash, thence S. 69 W. 320 poles to the beginning.

William Proctor 3
Grigory Fagan 3 D.S.
Phillip Mootherbough m.k.r.

No. 3221
640 acres

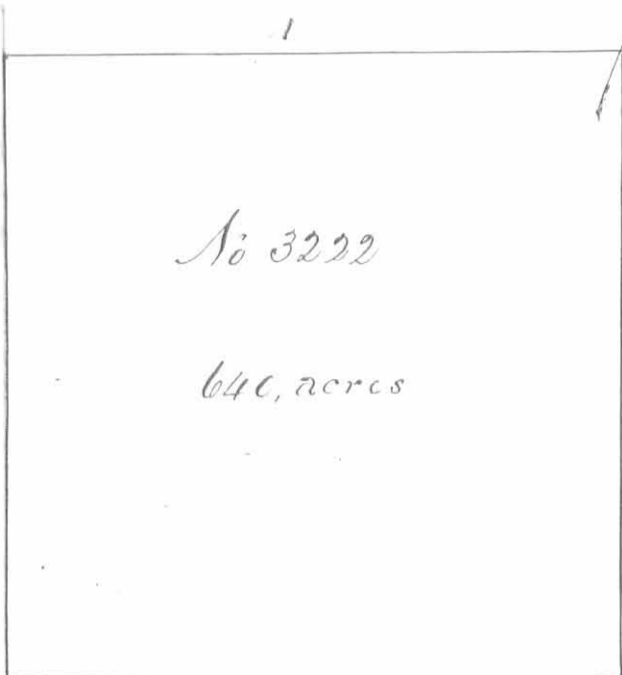
Lucas Sullivan D.S.
May 10th 1798
September 28. 1799



Surveyed for Charles Humphreys apr 400 acres of land on a Military warrant No. 4856 on Mill Creek a branch of Scioto; Beginning at three beechs and an ash Northeast corner to George McCredie's survey No. 3314 running with his line S. 10 E 400 poles, crossing the creek at 20 poles a branch at 120, one at 180 and one at 390 poles to a beech ash and white oak and hickory southeast corner to said McCredie survey, thence N. 80 E. 160 poles, crossing the creek at 140 poles to a white walnut beech and sugar tree, thence N. 10 W. 400 poles to a hickory two sugar trees and an Ironwood, thence S. 80 W. 160 poles to the beginning.

William Boyd 2
Peter Murphy 3
John Brittle m.k.r.

Lucas Sullivan D.S.
April 1st 1799
September 28th 1799



No 3222

640, acres

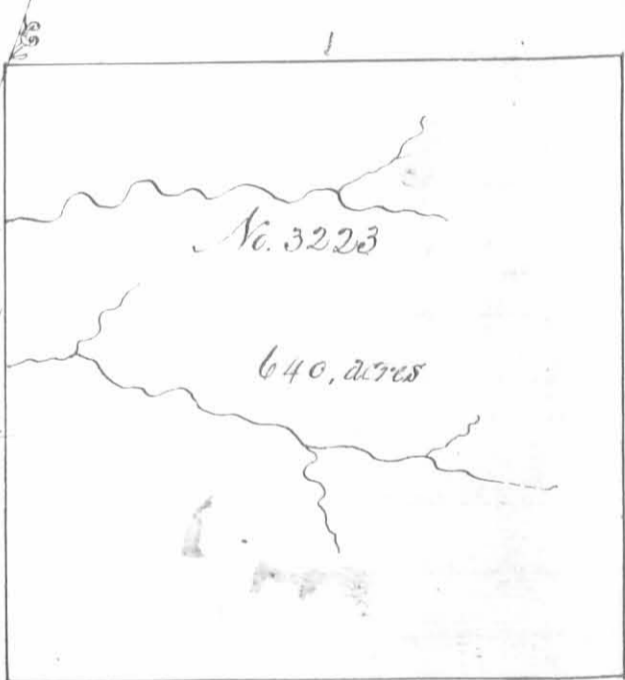
Surveye for Holland & Nancy 640 acres of land on part of a Military Warrant No. 2804 on the waters of Mead River: Beginning at two black oaks, a white oak and Cherry tree north west corner to said Nancy's survey No 3221 running with his line S. 21. E. 320 poles to two black oaks, south west corner to said Nancy's survey, thence S 69 W. 320 poles to two white oaks, thence N. 21. W 320 poles to a black oak and hickory, thence N.

69 E. 320 poles to the beginning.

William Proctor
 Grigby Fagans
 Philip Motherstough M.K.R.

Lucas Sullivan D.S.
 May 15th 1798
 September 28th 1799

Surveye for Holland & Nancy 640 acres of land on part of a Military Warrant No. 2804 on the waters of Mead river: Beginning at two black oaks southwest corner to said Nancy's survey No. 3221 running S 21. E. 320 poles, crossing a branch at 80 and one at 160 poles to a large Red oak, Black walnut and sugar tree, thence N. 69. E 320 poles to a sycamore, walnut and elm on the side of a branch, thence N 21 W 320 poles to an ash and sugar tree southeast corner to said Nancy's survey, thence with said line S. 69 W. 320 poles to the beginning.

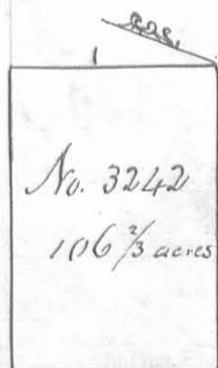


No. 3223

640, acres

William Proctor
 Grigby Fagans
 Philip Motherstough M.K.R.

Lucas Sullivan D.S.
 May 15th 1798
 September 28th 1799



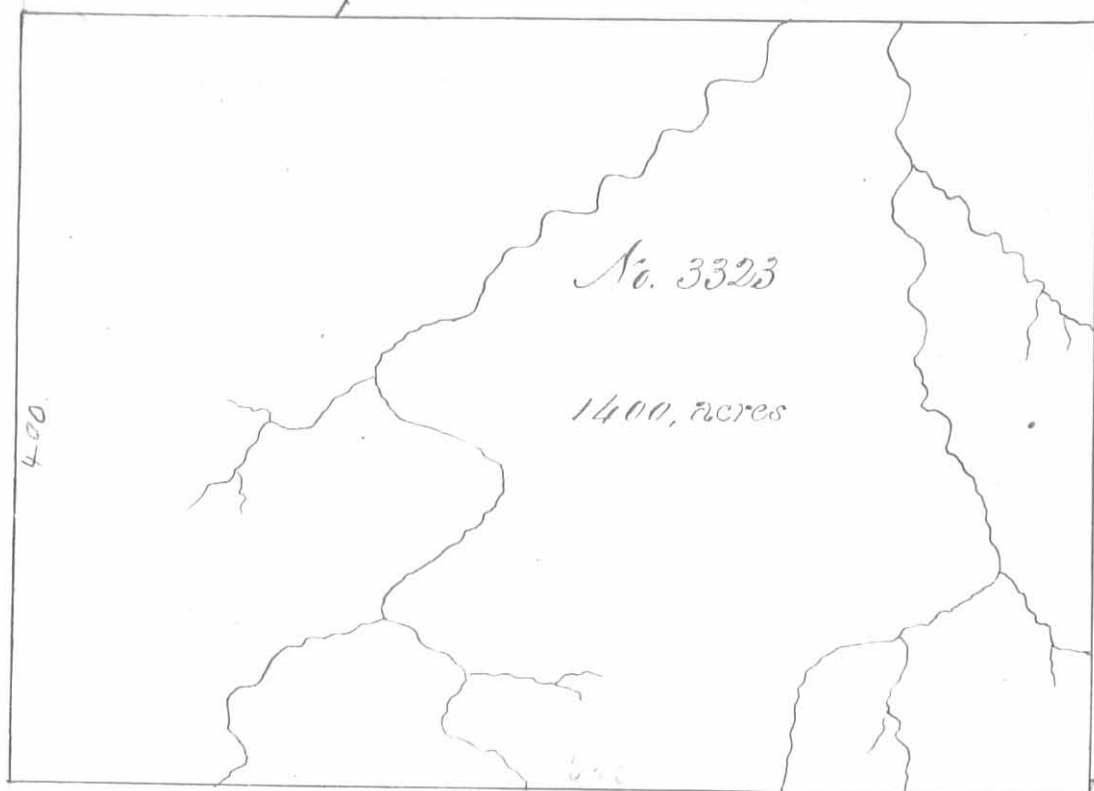
No. 3242

106 2/3 acres

Surveyed for Holland & Nancy 106 2/3 acres of land on part of a military warrant No. 2804 on the waters of Mead river: Beginning at two black oaks a white oak and cherry tree, northwest corner of said Nancy's survey No 3221 and northeast corner to said Nancy's survey, No 3222 running with the line of the last mentioned survey S. 69. W. 160 poles to two white oaks in said line, thence N. 21. W. 107 poles to a white oak and hickory, thence N 69 E. 160 poles to a black oak and hickory, thence S 21 E. 107 poles to the beginning.

William Proctor
 Grigby Fagans
 Philip Motherstough M.K.R.

Lucas Sullivan D.S.
 May 15th 1798
 September 28th 1799



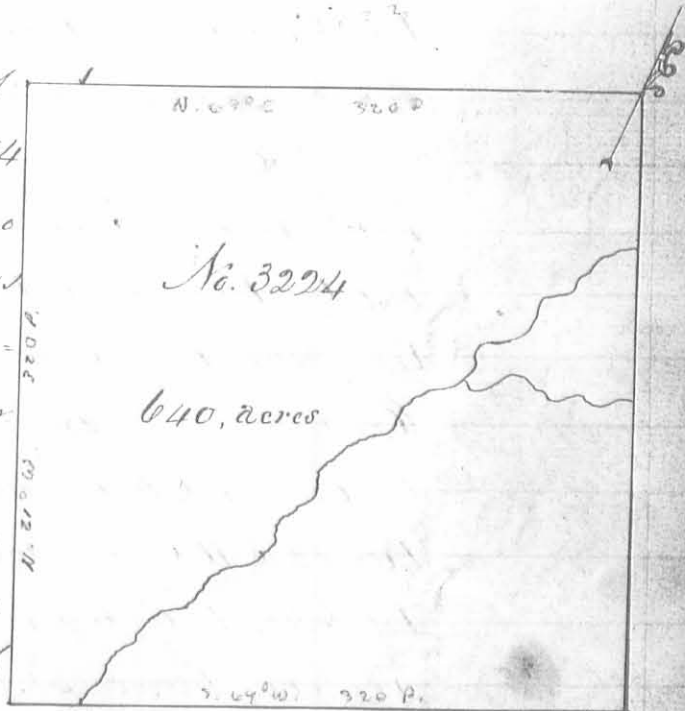
Surveyed for James Meabon 1400 acres of land on part of a Military Warrant No 196 on the waters of Mill creek a branch of Scioto Beginning at two large Sugar trees south west corner to George McCredie's survey No 3314 running with his line N. 10 W. 400 poles crossing two

branches to three sugar trees and a hickory Northwest corner to said McCredie's thence S. 80. W. 560 poles crossing a branch at 100 and one at 160 poles to two ash and an elm in the edge of a large swamp, thence S. 10. E. 400 poles crossing several drains to two sugar trees and an Ironwood near the swamp, thence N. 80. E. 500 poles crossing four branches to the beginning.

Peter Murphy 3
William Boyd 3 to 6
John Brittle M.R.

Lucas Sullivan D.S.
April 1st 1799
September 25th 1799

Surveyed for Hollan & Haney 640 acres of land on part of a Military Warrant No 2864 on the waters of Mead river. Beginning at two black oaks southwest corner to said Haney's survey No 3221, southeast corner to said Haney's survey No 3222 and northwest corner to said Haney's survey No. 3223 running with the line of the last mentioned survey S. 21. E. 320 poles crossing a branch at 80 and one at 160 poles to a red oak, black walnut and sugar tree southwest corner to said survey No. 3223, thence S. 69 W. 320 poles crossing the branch to two elms and a black walnut near the branch, thence N. 21. W. 320 poles to two white oaks southwest corner to said Haney's survey No. 3222 thence with said line N. 69. E. 320 poles to the beginning.



William Proctor 3
Gregory Fagans 3 to 6
Philip Mookerough M.R.

Lucas Sullivan D.S.
May 15th 1798
September 25th 1799



Surveyed for William Miller
1000 acres of land on part of a Military
Warrant No 151 on the waters
of the Miami; beginning at an
ash elm and iron woods southwest
corner to Laylor Ganceys Survey No.
3322, running with his line N 10 W
400 poles crossing two branches to two
ashes and a red elm northwest corner
to said Ganceys survey, thence S 80
W. 400 poles to two white oaks two red
oaks and a black oak, thence S
10, E. 400 poles crossing a branch

at 180 and on at 250 poles to two black oaks a red oak and sugar tree
thence N. 80 E 400 poles to the beginning.

Peter Murphy $\frac{3}{3}$
William Boyd $\frac{3}{3}$ Co
John Britte M.k.v.

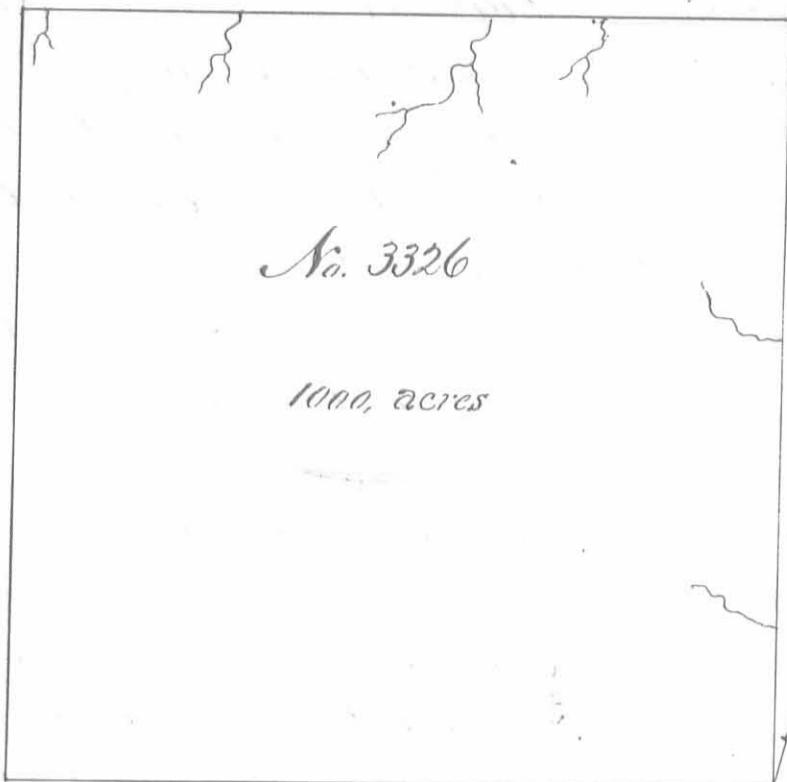
Lucas Sullivan D.S
April 2nd 1799
September 30th 1799

Surveyed for William Miller 1000 acres
of land on part of a Military warrant
No. 151 on the waters of Mill Creek a
branch of Scioto; beginning at a white
oak and hickory southeast corner to Geo-
rge McCordis survey No. 3314 running
with his line S. 80, W. 400 poles cross-
ing two branches to two large sugar
trees southwest corner to said Mc-
Cordis survey and southeast corner
to James Mobins survey No. 3323,
thence S. 10, E. 400 poles crossing two
branches to a poplar, lypin and
hickory, thence N. 80. E. 400 poles crossing a branch several times to
two sugar trees, and a beech, thence N. 10, W. 400 poles crossing a
branch to the beginning.

Peter Murphy $\frac{3}{3}$
William Boyd $\frac{3}{3}$ Co.
John Britte M.k.v.



Lucas Sullivan D.S
April 2nd 1799
September 30th 1799

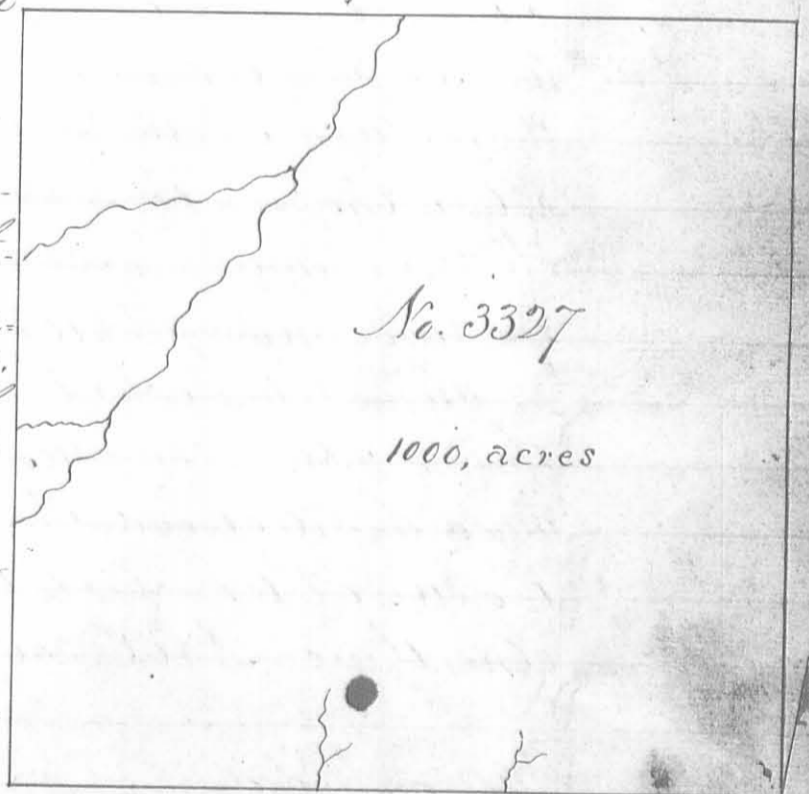


Surveyed for William Miller
 1000 acres of land on part of a Military
 warrant No. 151 on the waters
 of Mill creek a branch of Scioto
 Beginning at a poplar lynn and
 hickory, southwest corner to said
 Millers survey No. 3325 running
 with his line N. 10. W. 400 poles cross-
 ing two branches to two large su-
 gar trees Northwest corner to said
 Millers survey No. 3325 and south-
 east corner to James Malons sur-
 vey No. 3323, thence with Malons
 line S. 80. W. 400 poles crossing three branches to two ash and a sugar tree
 in Malons line on the bank of a drain; thence S. 10. E. 400 poles to three
 lynn; thence N. 80. E. 400 poles to the beginning.

Peter Murphy
 William Boyd C.C.
 John Britte m.k.v.

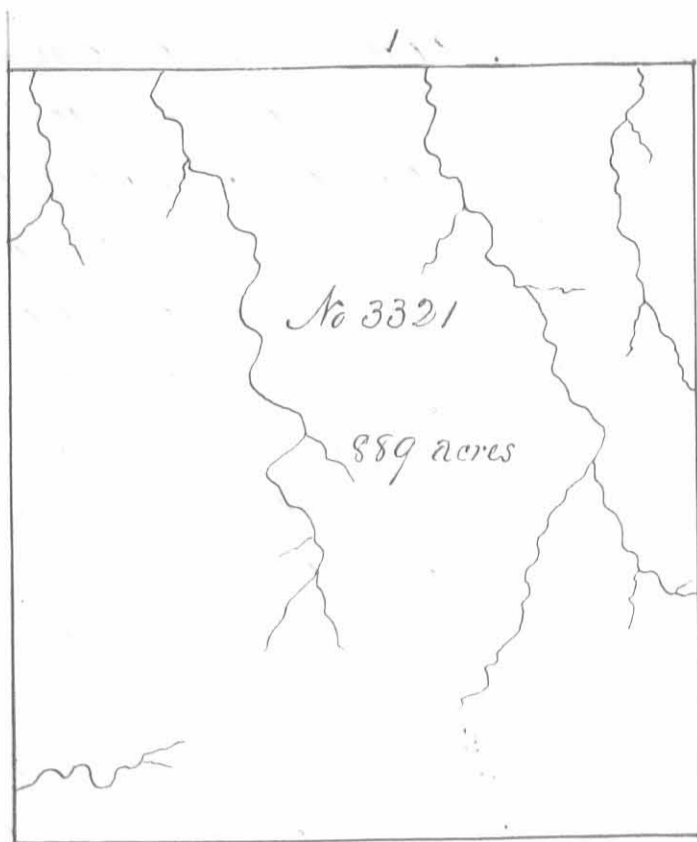
Lucas Sullivan D.S.
 April 3rd 1799
 September 30th 1799

Surveyed for William Miller
 1000 acres of land on part of a
 Military warrant No. 151
 on the waters of the Scioto; Be-
 ginning at three lynn southwest
 corner to said Millers sur-
 vey No. 3326 running with his
 line N. 10. W. 400 poles to two
 ash and a sugar tree on the
 bank of a drain Northwest
 corner to said Millers survey
 and in the line of James Ma-
 lons survey No. 3323; thence
 with Malons line passing his corner and with the line of Saylor
 Yanceys survey No. 3320 S. 80 W. 400 poles crossing several branches
 and a swamp to a buckeye, hickory and sugar tree, thence S. 10. E.
 400 poles, crossing several branches to a white oak, hickory and
 ash; thence N. 80. E. 400 poles crossing several drains of Mead river
 to the beginning.



Peter Murphy
 William Boyd C.C.
 John Britte m.k.v.

Lucas Sullivan D.S.
 April 3rd 1799
 September 30th 1799



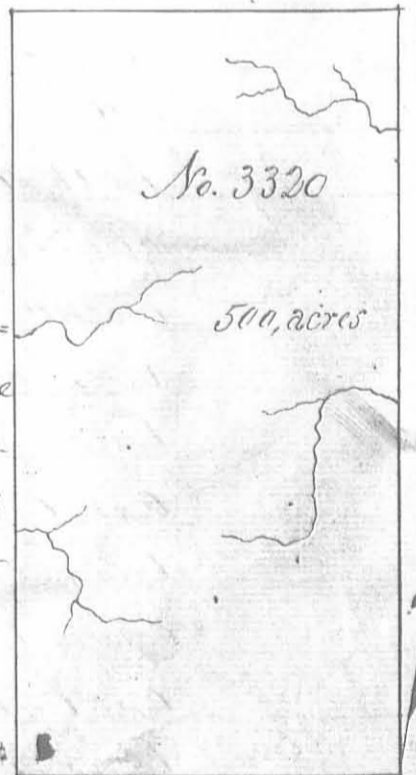
Surveyed for Layton Yancey 889 acres of land on part of a Military Warrant No. 2921 on the waters of Miami; beginning at two ash, a hickory and elm Southwest corner to said Yanceys survey No 3320, running with his line N. 10 N. 400 poles crossing two branches to two sugar trees an Iron wood, and dogwood, northwest corner to said Yanceys survey No. 3320, thence S. 80. W. 356 poles crossing a branch at 30. one at 140, one at 280 and one at 350 poles to an

ash, Iron wood, and dogwood, thence S. 10. E. 400 poles crossing two branches to an ash, lynn and two beech, thence N. 80. E. 356 poles, crossing a branch to the beginning.

Peter Murphy 3
William Boyd 3 60
John Brittle m.k.v.

Lucas Sullivan D.S.
April 2⁵ 1799
October 3⁵ 1799

Surveyed for Layton Yancey 500 acres of land on part of a Military Warrant No. 2921 on the waters of Scioto: Beginning at two lynn 156 poles S. 80. W. from the south west corner of James Mcabones survey No. 3323 running along the edge of a large swamp N. 10 N. 400 poles crossing several drains to two ash, two sugar trees and a buckeye thence S. 80. W. 200 poles to two sugar trees an Iron wood and dogwood, thence S. 10. E. 400 poles crossing several branches to two ash, a hickory and elm, thence N. 80. E. 200 poles to the beginning.



William Boyd 3
Peter Murphy 3 C.C.
John Brittle m.k.v.

Lucas Sullivan D.S.
April 1²⁵ 1799 -
October 3⁵ 1799 -