

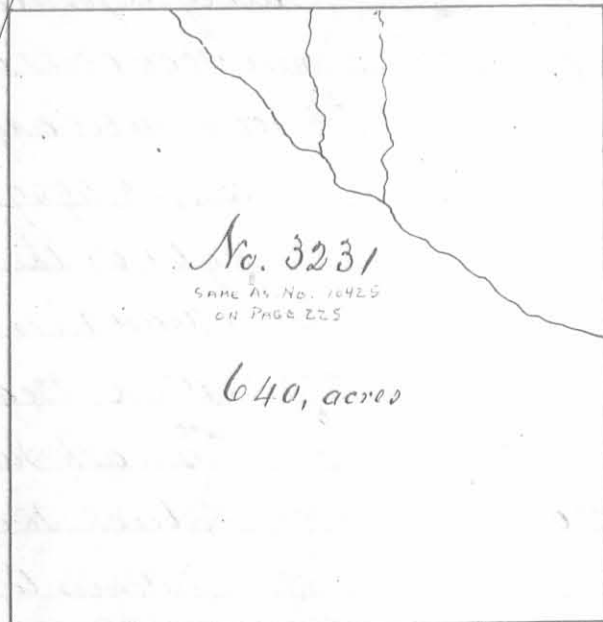
No. 4570
3000, acres

Surveyed for Richard Ken-
non 3000 acres of land on
four military warrants
No 4958, 4959, 4960 and
4961 on the waters of
Head river and Darlys
creek: Beginning at
an ash sugar tree and
buck southeasterly
corner to Holland
Nancy's survey No
3221 and Northeas-
terly corner to the
said Nancy's sur-
vey No 3223, thence
N. 52 E. 482 poles
crossing several
branches to a
large red
oak and
lynn in
the line
of Philip
Slaughter's sur-
vey No. 3159; thence with said line

724 and the line of Lucas Sullivan's survey No 3753, S. 38 E.
510 poles crossing several branches of Darlys creek and mid run of Darlys
creek at 486 poles to an ash lynn and buckeye southerly corner to Sullivan's
said survey and westerly corner to Robert Powers survey No. 3680; thence with
Powers line S. 39° 30' E 310 poles to an ash and elm in a swamp in said line;
thence S. 56, W. 724 poles crossing several small branches to three sugar trees a lynn
and dogwood in the line of Augustus J. Smith's survey No 3228; thence with said line N. 21
W. 152 poles to two elms northeasterly corner to Smith's said survey and southeasterly
corner to said Smith's survey No. 3226 with the line of No 3226 N. 22° 30' W. 318
poles crossing Mackachacks Creek at 76 poles to a sycamore walnut and elm
northeasterly corner to Smith's said survey and southeasterly corner to said
Nancy's survey No 3223, thence with Nancy's line N. 21 W. 332 poles crossing
a large branch at 24 and at 40 poles to the beginning.

Eleazer Hunt
William Dox
James Robinson M.k.v

Walter Dun D.S
July 11th 1818
December 4th 1818



Surveyed for Benjamin Stubblefield here at law to George Stubblefield dec^d 640 acres of land on part of a Military warrant No. 1171 on the waters of Mead river and Darby Creek Beginning at an ash, white oak hickory and sugar tree South west corner to Augustus Smith's survey No. 3230 and South easterly corner to said Smith's survey No. 3229 thence S. 21 E. 320 poles crossing a branch at 98 and one at 210 poles to two dogwoods and a white oak in the line of the represent-

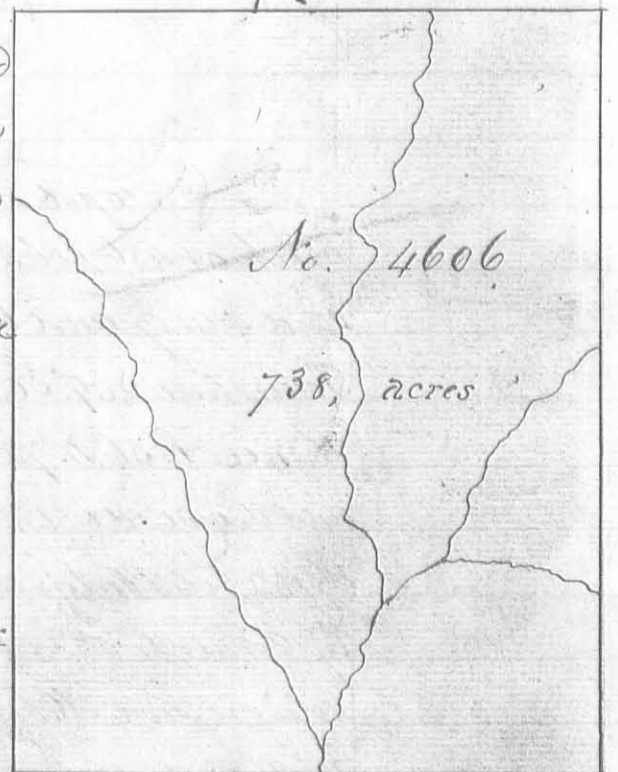
atives of James Caddenwoods survey No. 3614, thence with their line N. 69 E. 320 poles to two hickories northeasterly corner to said survey thence N. 21 W. 320 poles crossing a branch at 148 poles to an ash two sugar trees and two dead mulberries southeasterly corner to said Smith's survey No. 3230; thence with the line thereof S. 69 W. 320 poles crossing a branch at 128, one at 152 and one at 235 poles to the beginning.

Rob Thomas $\frac{3}{3}$
 John Hill $\frac{3}{3}$ 66
 John Thomas Mkr.

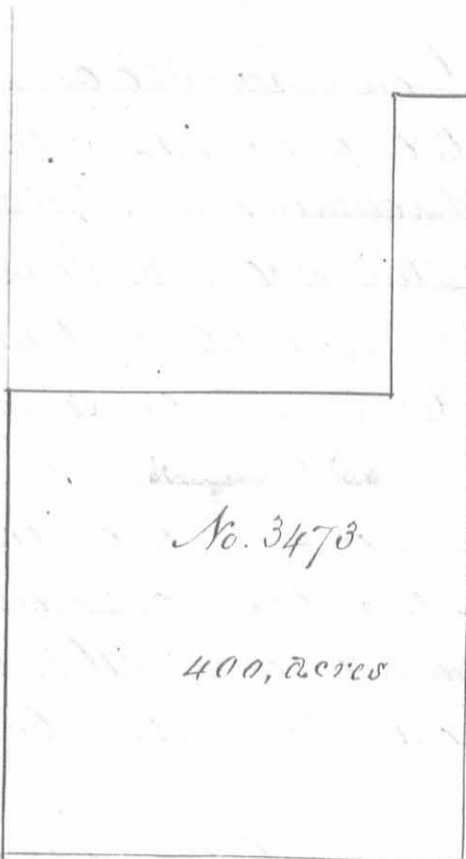
James Calloway Jun^r D. S.
 November 7th 1823
 December 8th 1823

Surveyed for John Gratten here 738 acres of land on part of a Military warrant No. 1495 on the waters of Darby Creek: Beginning at a red elm and two beches North west corner to Charles Simms' survey No. 158, thence N. 38 W. 390 poles crossing a branch at 96, one at 220 and one at 360 poles to two beches and a sugar tree; thence S. 52 W. 303 poles crossing Beaver run at 90 poles to two sugar trees in the north line of Robert Powers survey No. - thence S 38 E 390 poles crossing a branch at 90 poles to a sugar tree and beech, thence N. 52 E. 303 poles crossing Darby creek to the beginning.

David Gamwood $\frac{3}{3}$
 Abraham Sager $\frac{3}{3}$ 66
 Henry Shover Mkr.



Lucas Sullivant D. S.
 May 21st 1816
 February 13th 1818



No. 3473

400, acres

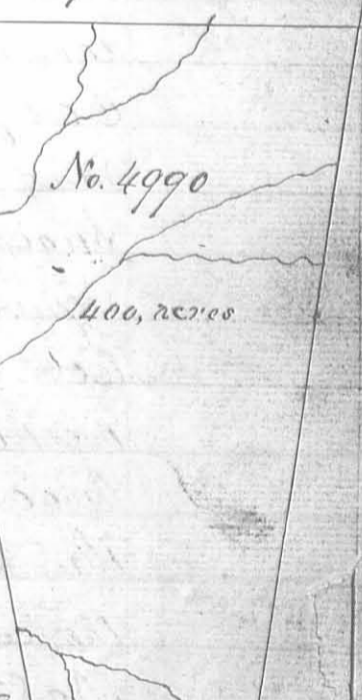
Surveyed for John Williams 400 of land on a military warrant No 1036 on the waters of Rush Creek: Beginning at a stake Northwest corner to Edwarda Stubblefield survey No 9901 and 10780, thence S 78 W 40 poles to a stake Northeast corner to Robert C Bruce survey No. 11043, thence S. 12. E 160 poles to stake with east corner to said survey, thence S 78 W 200 poles to a stake South west corner to said survey; thence S, 12. E. 240 poles to a stake in the Greenville treaty line; thence N. 78 E 240 poles to a stake Southwest corner to Stubblefield said survey, thence N. 12. W. 400 poles

to the beginning.

Peter Jones 3
John Lee 3
Charles Porter Mkr.

Cadwallader Wallace D.S
August 15th 1831
August 20th 1831

Surveyed for Samuel Wallace heir at Law to Adam Wallace deceased 400 acres of land on part of a military warrant No. 3195 on the waters of Stony creek: Beginning at a stake in the West line of Thomas Worthington's survey No. 4399, 125 poles South of two lymns and a white walnut; North west corner to said survey; thence S 80° W, 240 poles, crossing two branches to a stake Indian line, thence with said line S. 20. E 363 poles, crossing several branches to a stake 22 poles S. 20. E. from two white oaks and a red elm marked as a corner in said line Northwest corner to Sadder's other survey No. 10114 & 10141, thence with their line N. 80. E 119 poles crossing two branches to a sugar tree and lymn northeast corner to said survey in the West line of Alexander S Dandridge's survey No. 4478, thence with said line North 358 poles passing three sugar trees northwest corner to said survey at 184 poles and with the line of Worthington's said survey crossing two branches to the beginning.



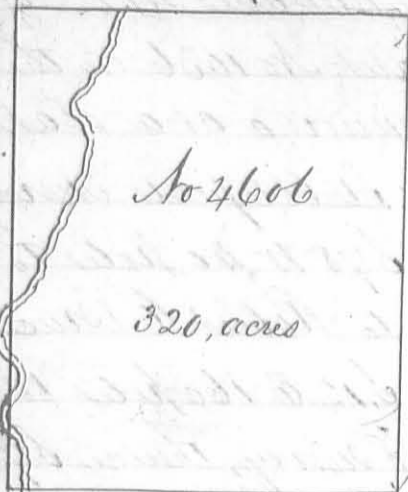
No. 4990

400, acres

Martin Smith 3
Jacob Foster 3
Matthew Pomier Mkr.

Cadwallader Wallace D.S
November 23rd 1819
June 21 1825

USE THIS ONE.



Survey for John Gratton heirs 320 acres of land on part of a Military Warrant No. 1485 on the waters of Darby's Creek: Beginning, at a hickory and three beeches in the line of Charles Symmes Survey No 158, thence N 38 W 250 poles to three beeches in the line of Levi Hollingsworth's Survey; thence with the line of said Hollingsworth's Survey S. 52 W. 205 poles and 10 links to a stake near a water beech, thence S 38 E 250 poles to a box elder, Buckeye and elm in the line of Richard Stephenson's Survey No 3163, thence with said Stephenson's line N. 52. E. passing his corner 205 poles 10 links to the beginning.

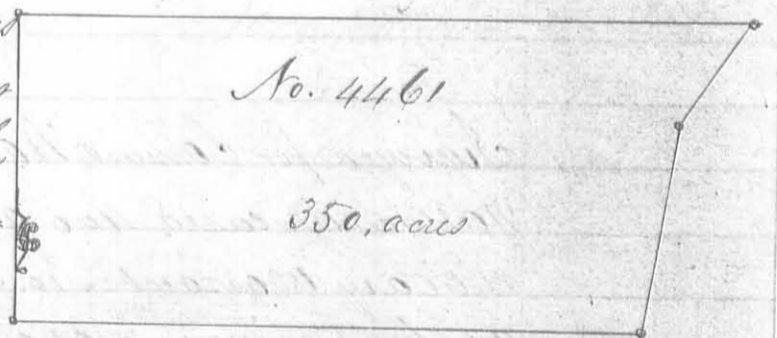
Joseph Garwood 3
Benjamin Vickers 3 1/2
Signed Starting M.k.r.

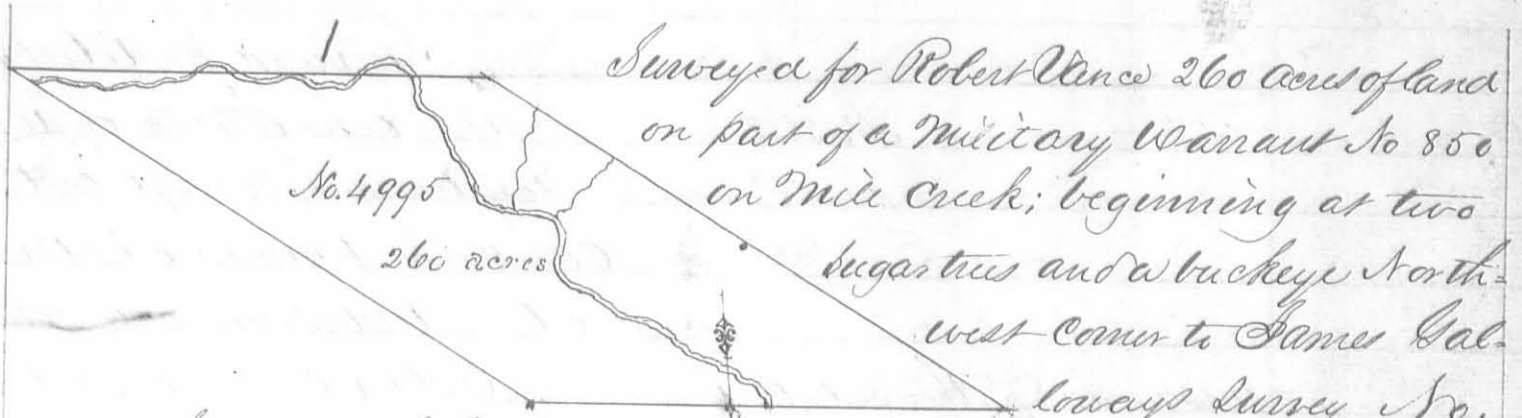
Allen Satham D.S.
October 19th 1825
Nov. 15th 1825

Survey for John Tibbs 350 acres of land on part of a Military Warrant No. 4946 on the waters of the East fork of the Miami: Beginning at two white oaks, elm & Sugar tree in the line of Samuel Hawes Survey No 2791, thence East 326 poles passing the north-west corner of Robert Sayre's Survey No. 4163 and with his line to three Sugar trees and a hickory in said line; thence N. 10. E. 110 poles to three hickories, thence N 35 E 65 poles to two maples & a hickory thence West 385 poles to a stake in the line of Thomas Dick's Survey No 876; thence with said line & the line of said Hawes Survey South 160 poles to the beginning.

William Vanmetre 3
William McQuinty 3 1/2
P. A. White M.k.r.

James Taylor D.S.
March 20. 1824
November 16. 1824





Surveyed for Robert Vance 260 acres of land on part of a Military Warrant No 850 on Mill Creek; beginning at two sugar trees and a buckeye North-west corner to James Gal-

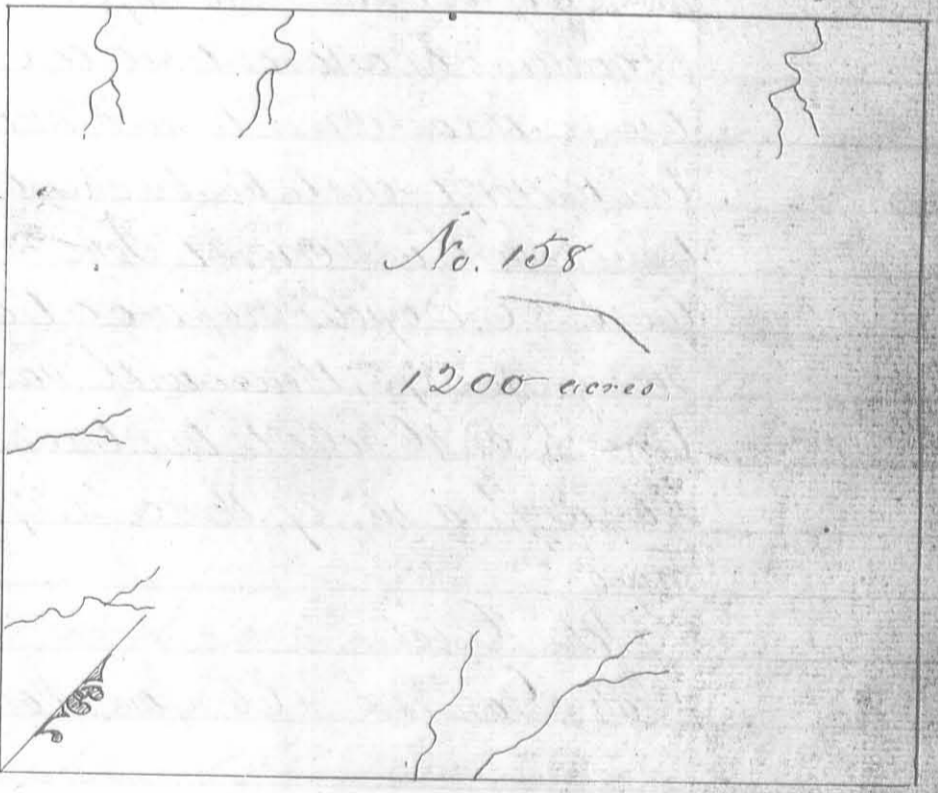
loways Survey No. 4813; thence with his line S 83 E. 144 poles crossing the creek to an elm, Ironwood and white oak corner to survey No 5092, thence binding on said survey N. 57 W. 320 poles crossing two branches to a beech and sugar tree; thence N. 83 W. 250 poles crossing the creek several times and passing a corner of No 5092 at 113 to a stake; thence S. 57 E. 320 poles crossing the creek & a branch to a sugar tree; thence S. 83 E. 106 poles to the beginning.

David Sharp
William Henry C.C.
Joseph Haynes M.k.r.

Allen Satham S
Feb 7th 8th 1830
Feb 11. 1830

106
379
150

Surveyed for Charles Simms 1200 acres of land on part of a Military Warrant No 351 on the waters of Darlys Creek. Beginning at a beech and sugar tree westerly corner to James Coleman & others survey No 3749, thence N 37 W 400 poles crossing a branch at 80 and one at 168 poles to three beeches and a hickory, thence N. 53 E. 480 poles, crossing a branch at 52 and one at 428 poles to five lymus pine one root, thence S 37 E. 400 poles to an ash elm and hickory in the line of William Carters survey No 3137, thence with his line and course thereof S. 53, W. 480 poles crossing a branch at 232 and one. at 272 poles to the beginning.



Samuel Warner C.C.
David Warner C.C.
Ashua McMaide M.k.r.

James Gallaway S. D.C.
December 3rd 1823
April 6th 1824

Note. Most if not all of this Survey is in Union County now, though some part was originally taxed in Logan

Surveyed for Robert Means a part of 133 1/2 acres of land on part of a military warrant No 5470 on the waters of Otter Creek; beginning at three Iron woods and a beech westerly corner of John Bairds survey No. 5875, thence with his line N. 25. E. 160 poles crossing a branch at 90 poles to two beeches and a sugar tree northerly corner to said survey, thence N. 17 W. 36 poles to two beeches a sugar tree and large white oak southeasterly corner to said Means survey No. 5091, thence with said line west 420 poles to two hickories and a lynn southwesterly corner to said survey and southeasterly corner to Thomas Notts survey No. 2674, thence S. 66. E. 335 poles to the beginning.

James Hatcher
 Levi Garwood
 John Mearns Mkr.

Duncan McArthur D.S.
 June 15th 1822
 September 27th 1822

Surveyed for Robert Means a part of 54 1/2 acres of land on part of a military warrant No 3470 on the waters of Otter Creek. Beginning as a large white oak two beeches and a sugar tree southeast corner to said Means survey No. 5091, thence with his line west 171 poles to two beeches and a sugar tree on the north side of a branch, northwest corner to John McDonalds survey No. 5888, thence with his line S. 28. E. 120 poles crossing a branch to a stake in the line of John Bairds survey No 5875, thence with said line N. 52. E. 132 poles crossing a branch at 46 poles to two beeches and a sugar tree northerly corner to Bairds said survey; thence N. 27. E. 26 poles crossing a branch to the beginning.

John Hatcher
 John Garwood
 James Hatcher Mkr.

Duncan McArthur D.S.
 November 18th 1822
 February 13th 1823

Surveyed for Robert Marshall 100 acres of land on a military warrant No. 1763 on the waters of Darby creek; beginning at two sugar trees and a beech westerly corner to Michael Murphy's survey No 5275 in the line of Benjamin Bojpeaus survey No. 484, thence with Murphy's line N. 53 E. 200 poles to two beeches and a lynn, thence S. 52. W. 200 poles to an ash and beech in the line of Bojpeaus said survey, thence with his line S. 38. E. 80 poles to the beginning.

Samuel Warner
 David Warner
 Joshua M. Mide Mkr.

James Garrison Jr D.S.
 November 28th 1823
 April 6th 1824

No. 5275
100, acres

Surveyed for Anthony Garrett 100 acres of land on a Military warrant No. 3562 on the waters of Darby Creek; beginning at an ash and beech in the line of Benjamin Boipeaus survey No. 4811 westerly corner to Robert Marshall survey No. 5275, thence with Marshall line N. 52 E. 200 poles to a white oak ash and lynn northerly corner to his survey; thence N. 38 W. 80 poles to two sugar trees and a lynn; thence S. 52. W. 200 poles to a black oak ash and maple in Boipeaus line; thence with said line S. 38. E. 80 poles to the beginning.

Samuel Warner
David Warner
Joshua McNaide M.k.r.

James Galloway Jr. D.S.
November 28th 1823
April 6th 1824

Surveyed for Michael Murphy 200 acres of land on a Military warrant No. 1152 on the waters of Darby Creek: Beginning at a sugar tree easterly corner to Benjamin Boipeaus survey No. 4811; thence with his line N. 38. W. 160 poles to two sugar trees and a beech; thence N. 52. E. 200 poles to two beeches and two sugar trees; thence S. 38. E. 160 poles to two beeches and an ash; thence S. 52. W. 200 poles to the beginning.

Samuel Warner
David Warner
Joshua McNaide M.k.r.

James Galloway Jr. D.S.
November 28th 1823
April 6th 1824

No. 5275
100, acres

Surveyed for John Surdau 100 acres of land on a Military warrant No. 1867 on the waters of Darby Creek: Beginning at a black oak ash and maple westerly corner to Anthony Garrett's survey No. 5275 in the line of Benjamin Boipeaus survey No. 4811, thence with said line, N. 38 W. 80 poles to a buck-eye, white oak and hickory northerly corner to said survey in the line of Richard Call's survey No. 4816, thence with said line N. 52. E. 200 poles to two hickories and an ash in said line; thence S. 38 E. 80 poles to two sugar trees and a lynn northerly corner to said Garrett's survey, thence with his line S. 52 W. 200 poles to the beginning.

Samuel Warner
David Warner
Joshua McNaide M.k.r.

James Galloway Jr. D.S.
November 28th 1823
April 6th 1824

No. 5042
270, acres

Surveyed for James Denny *ap^{te}*, Samuel Finley and Pypa Hewitt *ap^{te}* 270 acres of land on part of three military warrants in the following proportion viz: Denny 100 acres on warrant No. 3661. Finley 65 acres on warrant No. 1450 and Hewitt 105 acres on warrant No. 205 on the waters of Mead river. Beginning at two hickories and an elm north east corner to Richard Osborns survey No. 4520, and in the line of Augustine S Smiths survey No. 3229 running N. 21 W. 140 poles to a hickory, red oak and ash; thence S. 69, W. 308 1/2 poles to a forked Cherry tree and black oak; thence S. 21. E. 140 poles to two burr oaks and a hickory, thence N. 69, E. 308 1/2 poles to the beginning.

John Thomas *3*
James Thomas *3* C. C. m. k. r.

James Denny D. S.
August 30th 1806
September 2^d 1806

Surveyed for Pypa Hewitt *ap^{te}* 125 acres of land on part of a Military warrant No. 205 on the waters of Mead river. Beginning at a forked cherry and black oak north westerly corner to James Denny, Samuel Finley and Pypa Hewitts survey No. 5042, running S. 70, W. 87 poles to a hickory and burr oak; thence S. 28, W. 85 poles to two hickories, thence S. 21, E. 85 poles to a burr oak and hickory, thence N. 70, E. 153 poles to two hickories and a burr oak thence N. 21, W. 144 poles to the beginning.

No. 5044
125, acres

John Thomas *3*
James Thomas *3* C. C. m. k. r.

James Denny D. S.
August 30th 1806
September 3^d 1806

Surveyed for Pypa Hewitt *ap^{te}* 100 acres of land on part of a Military warrant No. 205 on the waters of the big miami; beginning at a black oak and white oak southwest corner to Nezekiah Mottens survey No. 4498, running north 254 poles crossing a branch at 188 poles to two black oaks; thence West 110 poles to two black oaks in Sudears line, thence with the same S 20 E. 269 poles crossing a branch at 202 poles to a black oak and hickory, thence East 17 poles to the beginning.

Solomon McCulloch *3*
John Ward *3* C. C. m. k. r.

James Denny D. S.
August 30th 1806
September 3^d 1806

No. 5057

50 acres

Surveyed for William Tidball app^x 50 acres of land on part of a military warrant No. 3707 on the waters of Mad river; beginning at an elm hickory and red oak, northwesterly corner to Samuel Finley James Denny and John Barreth survey No 4958, running S. 69. W 25 1/2 poles to a white oak, ash and hickory southwest corner to Augustine Smiths survey No. 3229 and in the line of Richard Osborns survey No. 4520, thence with Osborns line S. 21. E. 310 poles, to a small burr oak in a barn, thence N. 69 E 25 1/4 poles to a stake corner to said Finley, Denny and Barreth's survey; thence N 21 W 310 poles to the beginning.

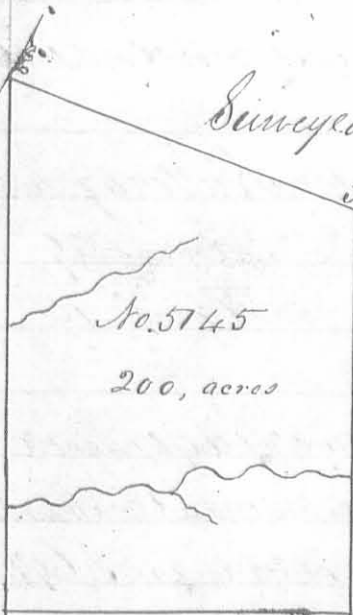
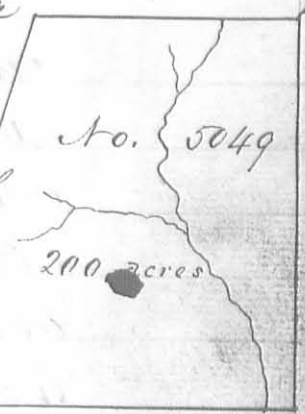
Benjamin Newitt
Jacob Johnston 3 l.c. & m.k.v

James Denny D.S.
October 23rd 1806
October 25th 1806

Surveyed for John McKinney app^x 200 acres of land on a Military Warrant No 4443 on the waters of Darby Creek; beginning at a hickory Elm and sugar tree westerly corner to Peter Pelhams survey No. 4697 running S. 52. W. 136 poles crossing a branch at 44 poles to three sugar trees in the line of Benjamin Stubblefield survey No. 3231, thence with his line S. 21. E. 208 poles to an elm and hickory; thence N. 52. E. 196 poles to two hickories and an elm in the line of said Pelhams survey, thence with Pelhams line N. 38 W. 200 poles to the beginning.

Alexander Kerr
James Stevens 3 l.c.
Joseph Sharp m.k.v

James Gallaway Jun^r D.S.
January 22nd 1807
January 27th 1807



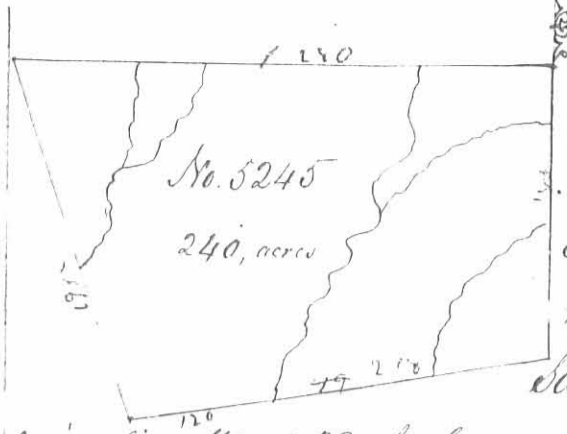
Surveyed for Robert Means app^x 200 acres of land on a military warrant No 5720 on the waters of Mad river. Beginning at three hickories and a white oak, southwest corner to John Campbells survey No 2574 in Saddlows line, running with said line S 20 E 220 poles crossing two branches to three white oaks in said line, thence N. 70. E. 180 poles to a hickory and black oak; thence N 20 W 205 poles to two black oaks; thence west 193 poles to the beginning.

George Irons
Richard Baldoch 3 l.c.
Henry Sturms m.k.v.

James Gallaway Jun^r D.S.
January 22nd 1807
January 27th 1807

Note - This survey was copied by mistake. It is not in Logan County but in Champlain Co.

H.B.

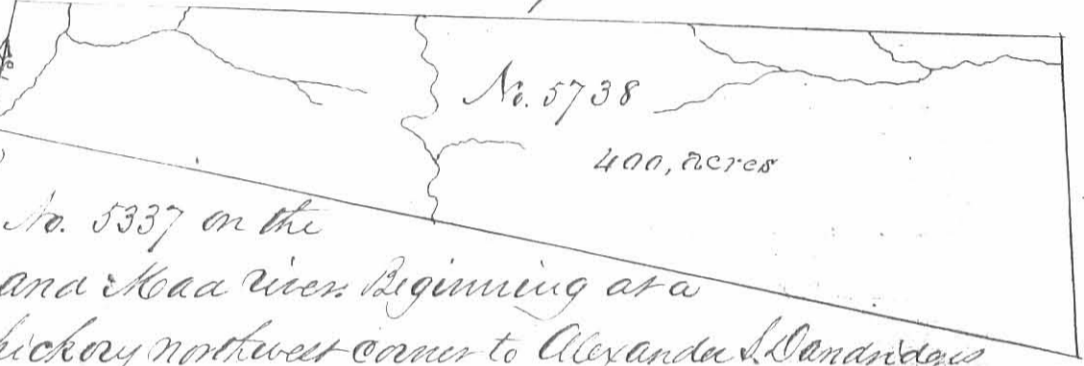


Surveyed for William Baylor 240 acres of land on part of a military Warrant No. 829 on the waters of Stony Creek: Beginning two cypresses and white walnut Northwest corner to Thomas Northingtons survey No. 4399 in the line of Samuel Wallaces survey No. 2873 running with said line West 280 poles crossing several branches to two bur oaks westerly corner to said Wallaces survey in Sudlers line, thence with said line S. 20. E. 196 poles crossing a branch to a stake; thence N. 80. E. 218 poles crossing a branch to a beech in said Northingtons line; thence with his line N. 148 poles crossing two branches to the beginning.

Colin McCollum
John McCollum 3/66
Samuel McCollum Mkr.

Duncan McArthur D.S.
March 31st 1807
April 22. 1807

Surveyed for Charles Spencer a lot 400 acres of land on part of a

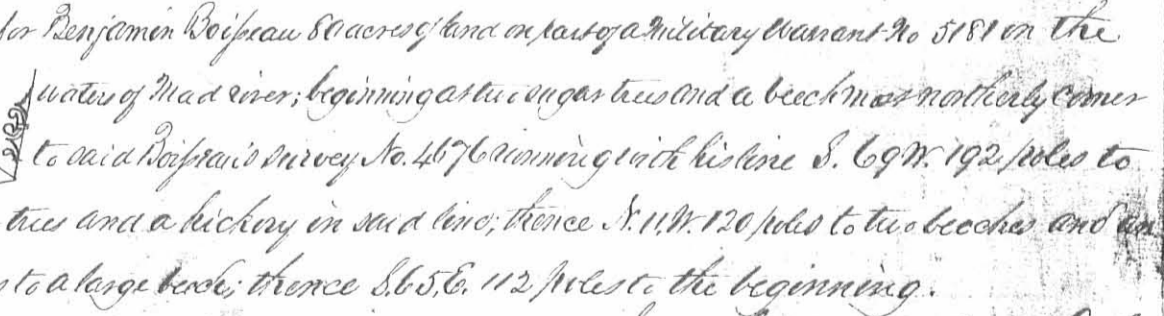


Military Warrant No. 5337 on the waters of Big Miami and Mad rivers. Beginning at a sugar tree beech and hickory northwest corner to Alexander Sandridges survey No. 3220. and Southeast corner to Thomas Northingtons survey No. 4399 running with Northingtons line North 66 poles crossing a small branch to three white oaks in the line of Robert Perces survey No. 3683; thence with Perces line and course thence of N. 30 E 544 poles crossing a branch at 28, one at 88, one at 208 one at 356 and one at 446 poles to three sugar trees and a white walnut; thence S. 16. E. 168 poles crossing a large branch of Mad river at 10 poles to two cypresses one root and an ash; thence West 578 poles passing Sandridges northeast corner and with his line crossing several branches to the beginning.

John Stearns
Moses Collier 3/66
Samuel Galloway Mkr.

James Galloway Junr D.S.
February 29th 1808
March 19th 1808

No. 5812
80 acres



Surveyed for Benjamin Boifreau 80 acres of land on part of a military Warrant No. 5181 on the waters of Mad river; beginning at two sugar trees and a beech near northerly corner to said Boifreau's survey No. 4676 running with his line S. 69 W. 192 poles to two sugar trees and a hickory in said line; thence N. 11 W. 120 poles to two beeches and an ash; thence East 100 poles to a large beech; thence S. 65. E. 112 poles to the beginning.

William Forsythe 3/66
William Forsythe 3/66
Samuel Galloway Mkr.

James Galloway Junr D.S.
June 15th 1808
June 27th 1808