

Surveyed for Robert Means of
1000 acres of land on part of a mili-
tary Warrant No. 5351 on the wa-
ters of Big Miami: Beginning at
a black ash, hickory and elm
northwest corner to Robert Gam-
bles survey No 9904, thence
with his line N. 75 E. 400 poles
crossing a branch at 140 poles
and Bulls road at 274 poles
to a hickory and sugar tree
thence N. 12 W. 400 poles cross-
ing a small branch at 22

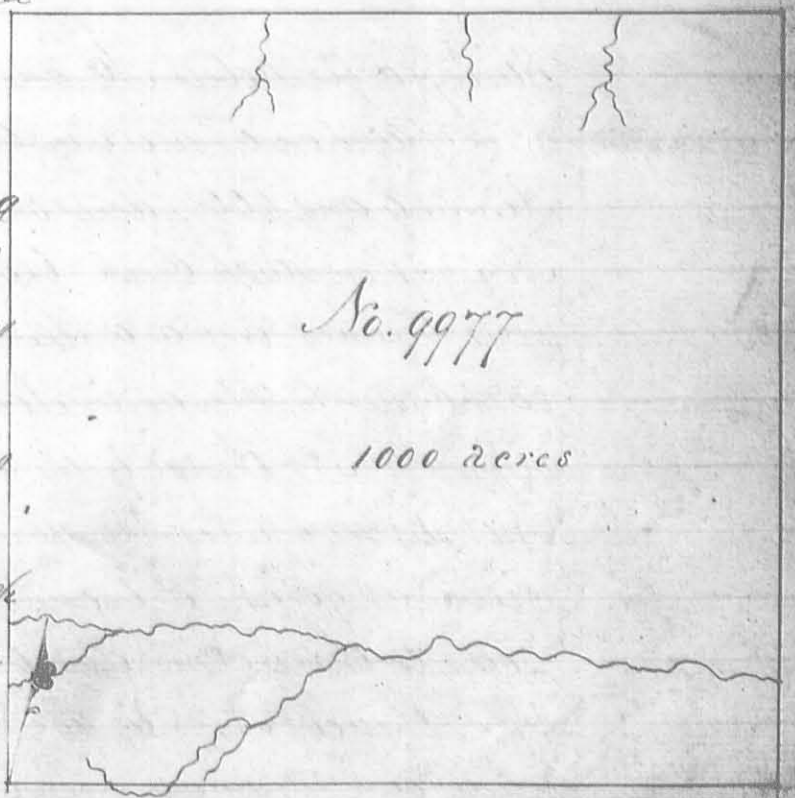
and one at 262 poles to a white oak and black oak both
dead in Robert Armstrong's field; thence S 75 N. 400 poles crossing
a prairie from 22 to 316 poles and a swamp from 316 to 356 poles
to four elms, thence S. 12. E. 400 poles crossing the prairie from 106
to 336 and a small branch at 338 poles to the beginning.

George Henry ³
James Henry ³ C.C.
Benjamin McCulloch M.k.r.

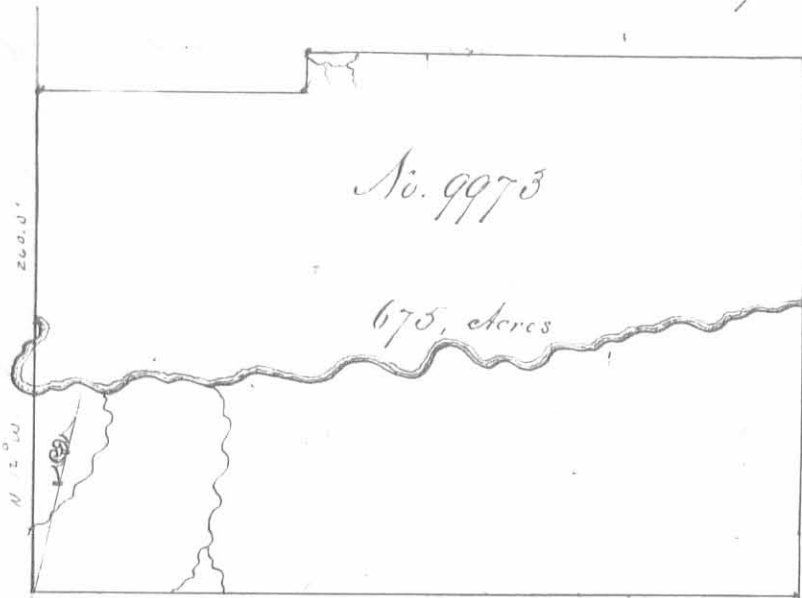
Thomas F. McArthur D.S.
January 15th 1821
March 30th 1821

Surveyed for Robert Means of
1000 acres of land on part of a
Military Warrant No. 5351 on
the waters of Scioto: Beginning
at two sugar tree, hickory and
beech, Northeast corner to James
Burtens survey No. 9955 and
southeast corner to Francis Meiers
survey No. 9976, thence N. 12. W.
400 poles crossing a small branch
at 48 and one at 81 poles to three
beeches and a sugar tree, thence
N. 75. E. 400 poles crossing a drain
at 136 and a Sandusky road at 240 poles to a bar oak, beech and
small blue ash; thence S. 12 E. 400 poles crossing a branch at 346 poles to two beeches
thence S. 78. W. 400 poles crossing the Sandusky road at 230 a branch at 302 one at 314 and
at 348 poles to the beginning.

James Henry
Thomas H. Kellogg ³ C.C.
James C. Donalson M.k.r.



Thomas F. McArthur D.S.
January 22nd 1821
March 30th 1821



Surveyed for Robert Means of 675 acres of land on part of three Military Warrants, 400 acres on No. 5383, 200 acres on No 5184 and 75 acres on No 5169 on Big Miami: Beginning at a beech ash and buckeye southeast corner to the representation of John Gilliam and others entry No 9972;

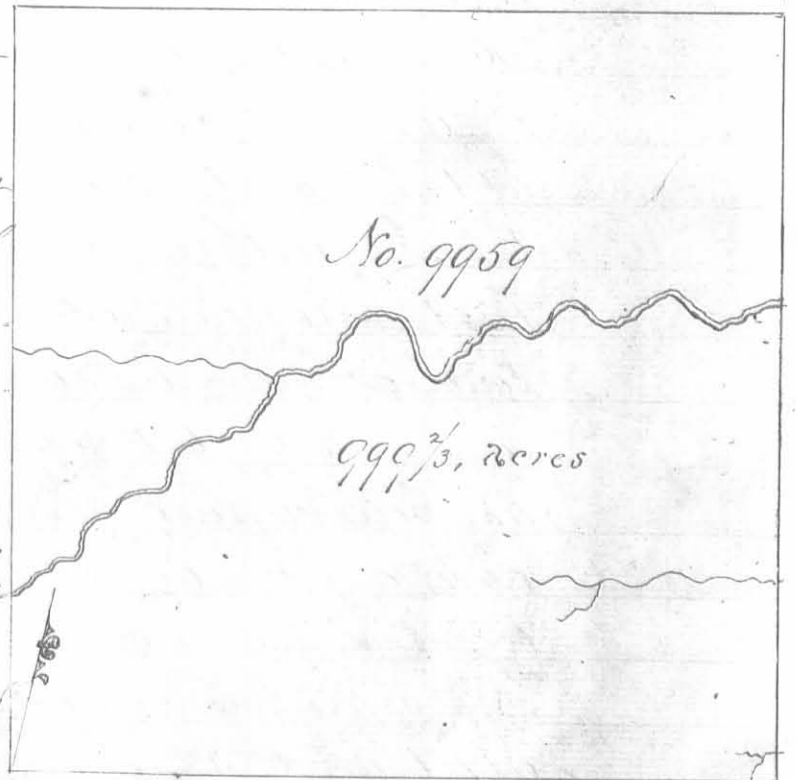
thence with their line N 12 W. 260 poles crossing a small branch at 36 and the Miami from 110 to 132 poles to an ash sugar tree and oak; thence N. 78. E. 140 poles to a beech and small iron wood; thence N. 12 W. 16 poles crossing a branch at 12 poles to an ash and elm in a swamp; thence N. 78 E. 260 poles crossing a branch at 21 a beaver pond at 24 to 30 poles to a hickory, buckeye and two beeches; thence S. 12. E. 276 poles crossing the Miami at 126 poles to two beeches and a sugar tree; thence S. 78. W. 400 poles crossing the middle fork of Miami at 290 and a spring branch at 310 poles to the beginning.

George Henry $\frac{2}{3}$
James Henry $\frac{3}{3}$ C.C.

Benjamin McCulloch Mkr.

Thomas J. McArthur D.S.
January 15th 1821
March 30th 1821.

Surveyed for Robert Means of 1000 acres of land on a Military Warrant No. 5359 and 66 $\frac{2}{3}$ acres on part of No. 5351 on Rush Creek; beginning at four beeches and a white ash southeast corner to Alexander Parkers survey No 9958; thence with his line N. 12. W. 400 poles crossing Rush Creek at 90 and a branch at 222 poles to three elms and two buckeyes; thence N. 78. E. 400 poles to a white oak a small beech, iron wood and sugar tree; thence S. 12. E. 400 poles crossing the Creek at 150 a branch at 296 and one at 387 poles to a red oak small sugar tree and small beech; thence S. 78. W. 400 poles crossing a branch at 10 poles to the beginning.



James Henry $\frac{2}{3}$
Thomas A. Kellogg $\frac{3}{3}$ C.C.
James E. Donaldson Mkr.

Thomas J. McArthur D.S.
February 2nd 1821
March 30th 1821



No. 9931

1000, acres

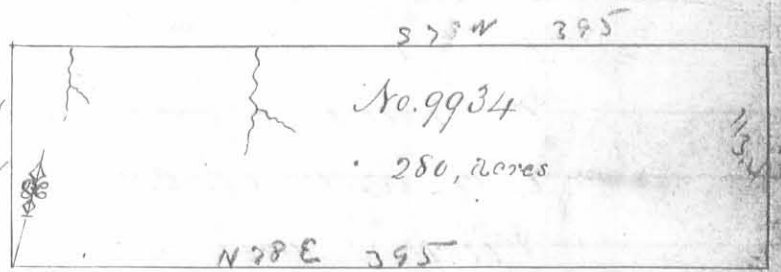
Surveyed for James Taylor Cap.^w
 1000 acres of land on the following
 Military warrants 888²/₃ acres
 on No. 5392. 100 acres on No. 5376
 and 11¹/₃ acres on part of No. 5372
 on the waters of big Miami;
 beginning at a hickory and su-
 gar tree southeast corner to Charles
 Lewis survey No. 9930 and north
 west corner to Pierce and Kaeple
 survey No. 9906, thence with a
 line of No. 9906 N. 78. E. 400 poles
 crossing a branch at 316 to a

hickory, beech, ash and hawbeam; thence N. 12. W. 400 poles crossing
 a branch at 310 poles to three elms on the bank of a said branch
 thence S. 78. W. 400 poles to an elm and three dogwoods northeast
 corner to Lewis said survey; thence with said line S. 12. E. 400 poles
 to the beginning.

Heikiah Roxbrag
 Levi D. Tharp - C.C.
 Wilson S. Thompson M.k.r.

Saml Forrer D.S.
 January 18th 1820

Surveyed for Hubbard Myatt Execu-
 tor 280 acres of land on two Military
 warrants No. 6262 and 6265 on
 the waters of Rush Creek; beginning
 at a red oak, elm and sugar tree southeast corner to George Clark's
 survey No. 9933; thence with a line of Taylor and others survey
 No. 9909 N. 78. E. 395 poles to a sugar tree; thence N. 12. E. 1134 poles
 to a sugar tree and iron wood; thence S. 78. W. 395 poles cross-
 ing a branch of big Miami at 267 at 335 poles to a red oak
 beech and sugar tree; thence S. 12. E. 1134 poles to the begin-
 ning.

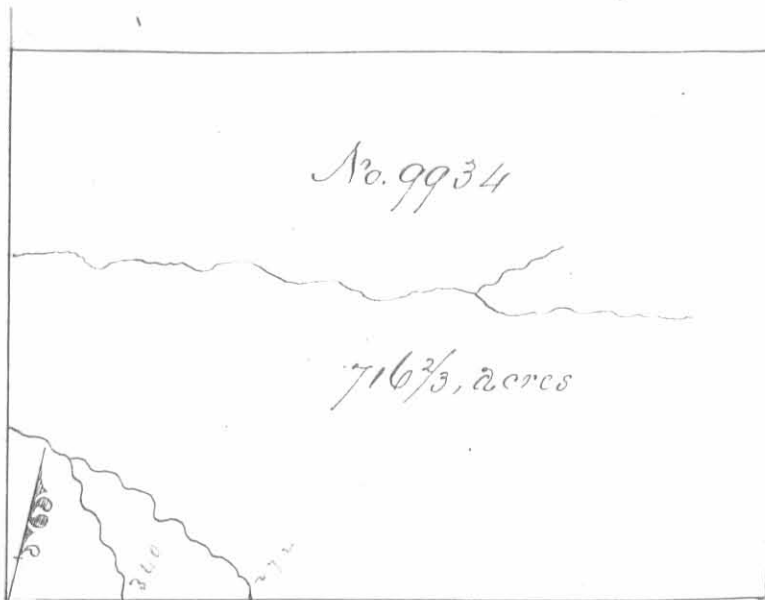


No. 9934

280, acres

Levi D. Tharp
 Heikiah Roxbrag - C.C.
 Wilson S. Thompson M.k.r.

Samuel Forrer D.S.
 January 20th 1820
 January 27th 1821



Surveyed for the representatives of David Wallace 716 $\frac{2}{3}$ acres of land on part of a military warrant No 5888 on the waters of Rush Creek and Big Miami; beginning at a red oak tree and sugar tree north west corner to Hubbard Wyatt's survey No. 9934 in the line of George Clark's survey No 9933, thence

with said line N. 12. W. 286.6 poles to three beeches north east corner of said survey, thence N. 78. E 400 poles to three beeches; thence S. 12 E 286.6 poles to a beech, lynn and sugar tree northwest corner to Wyatt's survey No 9934, thence with his line S. 78. W. 400 poles crossing a branch of Miami at 272. and one at 340 poles to the beginning.

Levi D. Sharp

Milkiak Rosebrag & C. G.

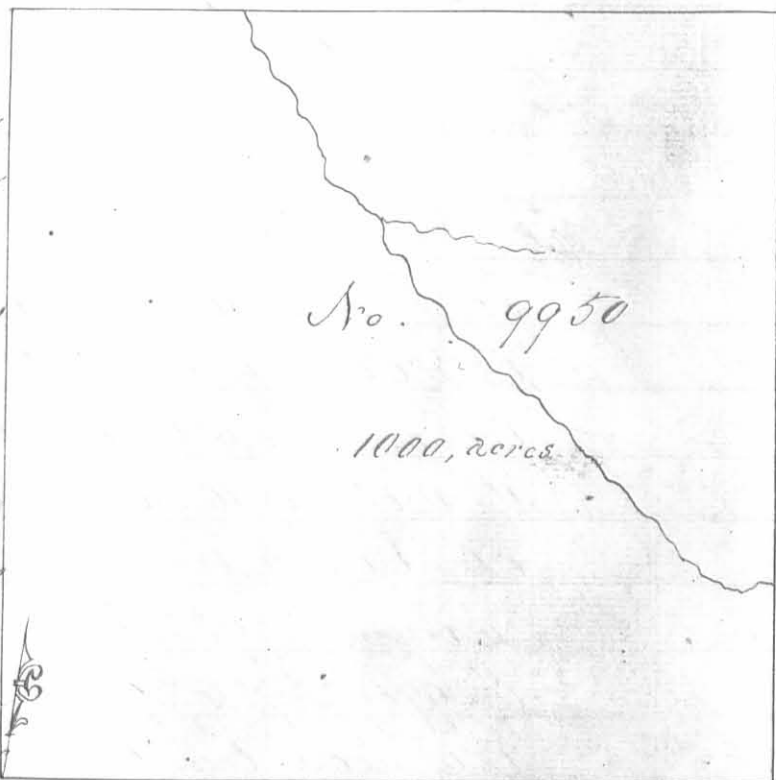
Wilson S. Thompson M. k. r.

Samuel Forrer D. S.

January 20th 1820

January 27th 1821

Surveyed for Michael Bowyer 1000 acres of land on part of a military warrant No 3224 on the waters of the Big Miami: Beginning at a stake in a field near Solomons town southeast corner to said Bowyers survey No. 9949 and Northeast corner to Charles Lewis survey No. 9930; thence with Lewis line N. 78. E. 400 poles to an elm and three dogwoods; thence N. 12 W. 400 poles, crossing a large branch at 202 poles to a buckeye and ash; thence S. 78 W. 400 poles crossing the branch at 286 poles to two hickories north east corner to Bowyer said survey; thence with his line S. 12. E. 400 poles to the beginning.



Levi D. Sharp

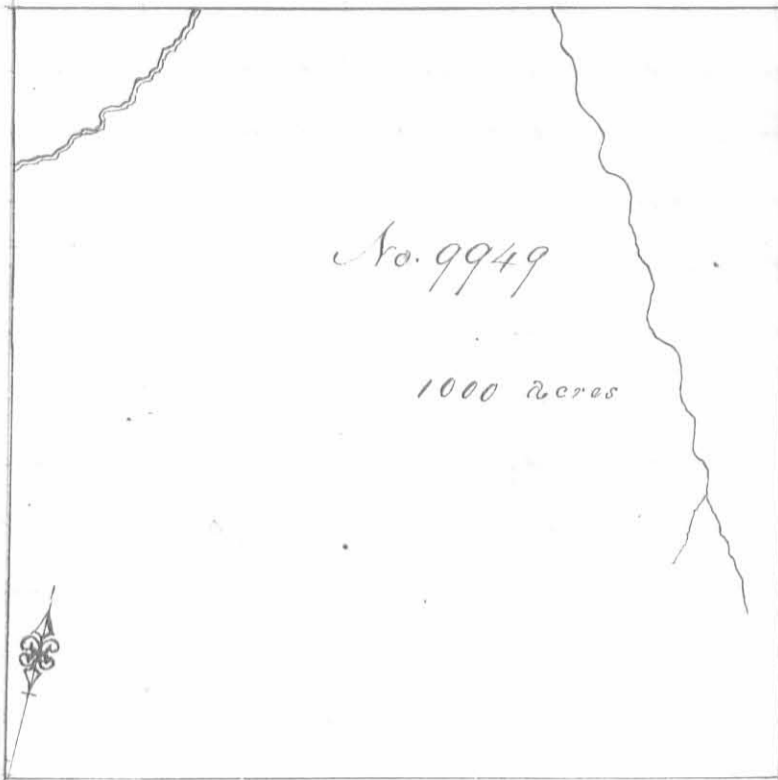
Milkiak Rosebrag & M. k. r.

Wilson S. Thompson M. k. r.

Samuel Forrer D. S.

January 29th 1820

November 30th 1820



Surveyed for Michael Bowyer
1000 acres of land on part of a
Military Warrant No 3224 on
the big Miami: Beginning at
four elms southeast corner of
George Clarke's survey No. 9948
and North west corner to Robert
Means survey No 9929; thence
with Means line N. 78. E 400
poles to a stake in a field; thence
N 12 W 400 poles to two hickories
thence S. 78. W. 400 poles crossing
a branch at 118 poles and the

big Miami at 362 poles to three beeches; thence with Clarke
line S. 12. E. 400 poles crossing the big Miami to the beginning.
Seri D. Sharp
Hilkiak Rosebrag ³ C. C.
Wilson S. Thompson M. L. R.

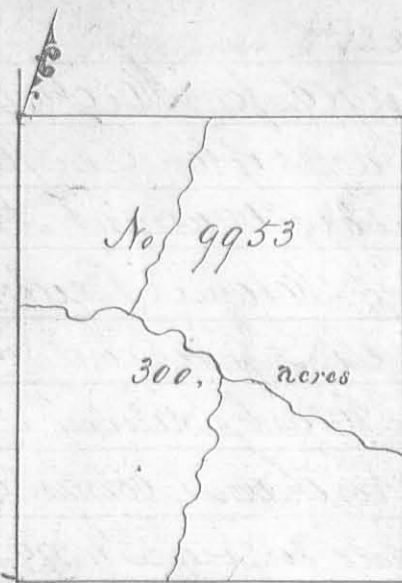
Samuel Forrer D. S.
January 28th 1820
November 30. 1820

Surveyed for Michael Bowyer
1000 acres of land on part of a
Military Warrant No 3224
on the waters of big Miami;
beginning at an elm and three
dogwoods; southeast corner
of said Bowyer's survey No 9950
thence with a line of James
Taylor's survey No 9931 N. 78 E
400 poles to three elms on the
bank of a large branch; thence
N. 12. W. 400 poles to a beech
and two buckeyes, thence S. 78. W. 400 poles to an ash and buck-
eye northeast corner to Survey No 9950, thence with a line of said
survey S. 12. E. 400 poles crossing said branch at 198 poles to the
beginning.



Seri D. Sharp
Hilkiak Rosebrag ³ C. C.
Wilson S. Thompson M. L. R.

Samuel Forrer D. S.
July 29. 1820
November 30. 1820

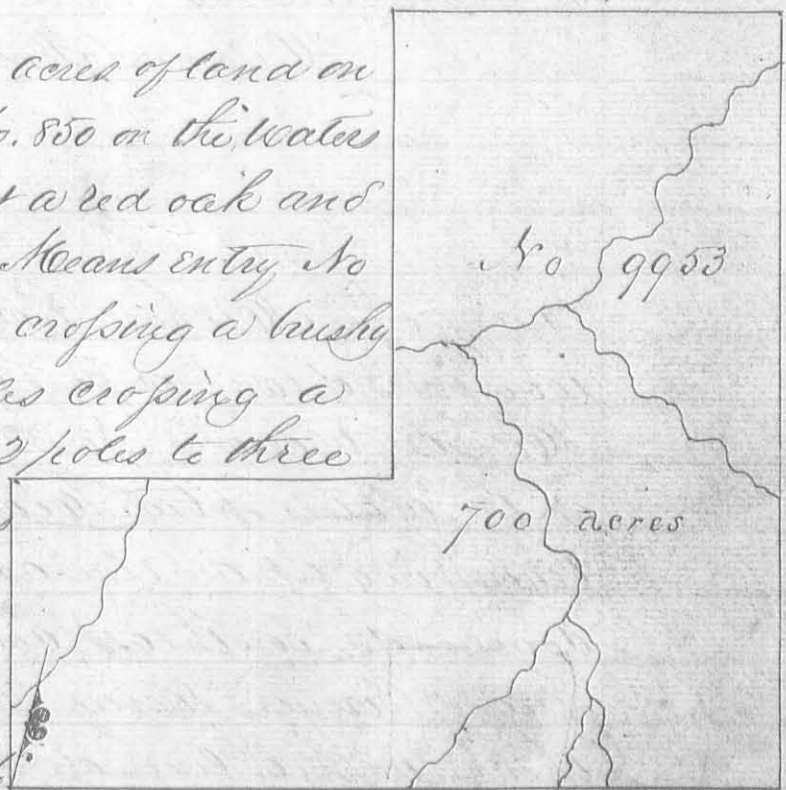


Surveyed for James Fitzpatrick 300 acres of land on part of a Military warrant No 2658 on the waters of Big Miami; beginning at two beeches and a sugar tree at the Northeast corner of Robert Means entry No 9952; thence with his line S. 12 E. 240 poles crossing the middle fork at 96 poles to two beeches corner to Robert Vances 700 acre survey; thence with Vances line N. 78 E. 200 poles crossing a branch to a stake, thence with another of Vances lines N. 12 W 200 poles crossing a branch to two beeches; thence S. 78. W. 200 poles crossing a branch at 100 poles to the beginning.

George Henry 3
James Henry 3 C.O.
Benjamin McCulloch M.R.

Thomas S. McArthur D.S.
January 14th 1821

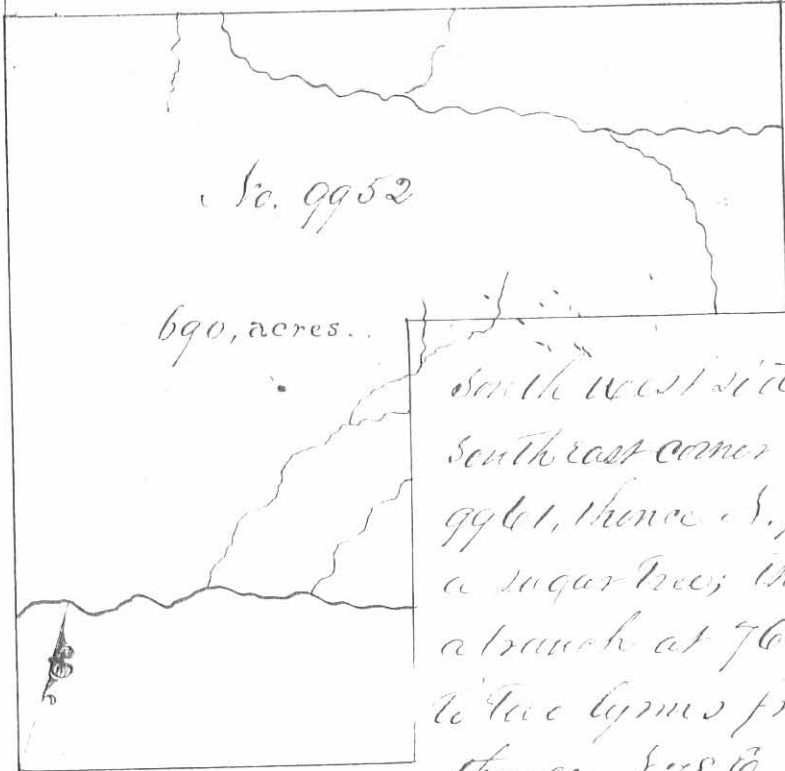
Surveyed for Robert Vance 700 acres of land on part of a Military warrant No. 850 on the waters of Big Miami; Beginning at a red oak and beech southeast corner to Robert Means entry No 9952, thence N. 78 E 400 poles crossing a brushy prairie at from 200 to 220 poles crossing a branch at 296 and one at 312 poles to three beeches; thence N. 12 W. 400 poles crossing a branch at 156 and one at 374 poles to four beeches and a sugar tree; thence S. 78. W 200 poles crossing a small branch



at 24 poles to two beeches corner to James Fitzpatrick 300 acres survey thence with his line S. 12 E 240 poles crossing a small branch to a stake; thence S. 78. W. 200 poles crossing a branch to two beeches; thence S. 12. E. 200 poles crossing a branch at 122 poles to the beginning.

George Henry 3
James Henry 3 C.O.
Benjamin McCulloch M.R.

Thomas S. McArthur D.S.
January 16th 1821
March 28th 1821



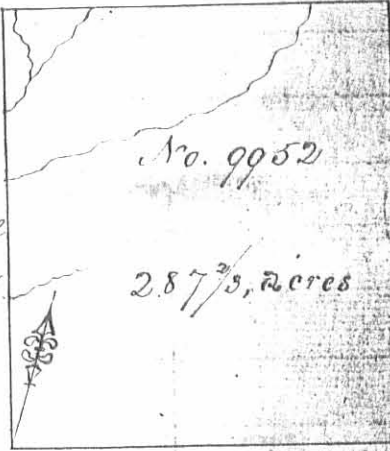
Surveyed for Robert Means
 ap^u 690 acres of land on a military
 warrant No 5221 and part of No
 5226 on the waters of Big Miami
 Beginning at three elms corner

the northeast side and two on
 the southwest side of the south fork of the Miami
 southeast corner of Michael Boyers survey No.
 9961, thence S. 78. E. 200 poles to two beeches and
 a sugar tree; thence S. 12. W. 230 poles crossing
 a branch at 76 one at 144 and one at 180 poles
 to two lymms from one root and two beeches
 thence S. 78. E. 200 poles crossing a branch at
 6 one at 46 and one at 104 poles to a beech and iron woods; thence
 S. 12. W. 165 poles crossing a large branch at 60 poles to two beeches
 and a sugar tree; thence S. 78. W. 400 poles crossing a small branch
 at 172 a large branch at 290 and a branch at 310 poles to a
 beech ash and buckeye; thence S. 12. E. 395 poles crossing a branch
 at 326 poles to the beginning.

John McCoy
 Samuel Sepler S. & C.
 J. W. Milgus M. S.

Thos S. McArthur D. S.
 June 12th 1821
 July 20th 1821

Surveyed for Robert Means ap^u 287 2/3 acres of land on
 part of a military warrant No. 5101 on the waters of
 the Big Miami; beginning at two beeches and a sugar
 tree southeast corner to said Means survey No. 9952 of
 690 acres in the line of Henry Hoopies survey No.
 9982; thence with said line S. 78. E. 200 poles to a
 red oak and beech northeast corner to Hoopies said survey; thence
 S. 12. W. 230 poles crossing a branch at 34 poles to a beech and iron
 wood corner to Means said survey; thence with his line S. 78. W. 200
 poles crossing a branch at 38 one at 156 and one at 194 poles to two
 lymms from one root and two beeches; thence with another of his
 lines S. 12. E. 230 poles crossing a branch at 50 and one at 154 poles
 to the beginning.



John McCoy
 Samuel Sepler S. & C.
 John W. Milgus M. S.

Thomas S. McArthur D. S.
 June 12th 1821
 July 20th

No. 9985
 361 acres
 255 1/2

Surveyed for the representatives of Nathaniel Burdell 361 acres of land on part of a Military Warrant No 3348 on the waters of Big Miami; beginning at two beeches south east corner to James Taylor and others survey No. 9987 and Northwest corner to Snruple and others survey No. 9971; thence with their line N. 75.8 E. 255 1/2 poles to an ash and elm on the bank of a small branch; thence S. 12 N. 226 poles to an ash and two beeches; thence S. 78. N. 255 1/2 poles to three beeches in a line of survey No. 9987; thence with said line S. 12 E. 226 poles to the beginning.

Levi D. Sharp
 Hilkiak Rosbag } C.C.
 Wilson S. Thompson M.R.

Samuel Forer D.S.
 March 9th 1820
 March 15th 1821

Surveyed for the representatives of Nathaniel Burdell 361 acres of land on part of a Military Warrant No. 3348 on the waters of Big Miami; beginning at an ash and one beechery north east corner of Snruple and others survey No. 9971; thence S. 12 N. 400 poles to three beeches; thence S. 78. N. 144 1/2 poles to two beeches. Southeast corner of Ache Beales survey No. 9988; thence with his line and the line of said Burdell's survey S. 12 E. 400 poles to an ash and elm, southeast corner to Burdell's said survey; thence with a line of survey No. 9971, S. 78. E. 144 1/2 poles to the beginning.

Levi D. Sharp
 Hilkiak Rosbag } C.C.
 Wilson S. Thompson M.R.

Samuel Forer D.S.
 March 7th 1820
 March 15th 1821

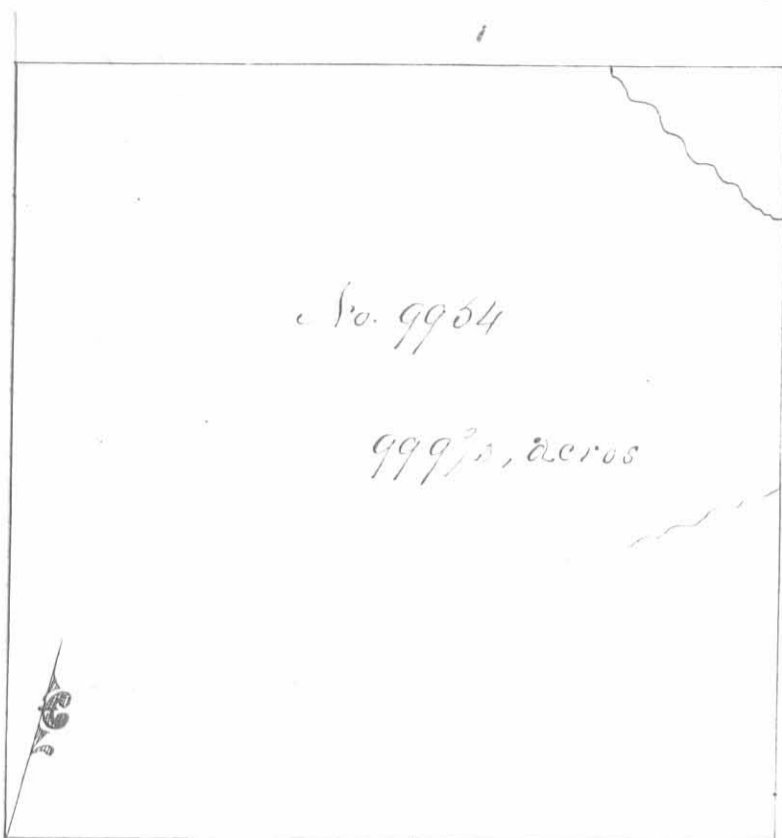
No. 9985
 361 acres

No. 9988 & 9997
 352 1/3 acres

Surveyed for Ache Beales 352 1/3 acres of land on part of a Military Warrant No 3348 on the waters of Big Miami; beginning at three beeches northwest corner to Nathaniel Burdell's survey No. 9988 in the line of Taylor and Kavinon's survey No. 9987; thence with said line N. 12 N. 220 1/2 poles passing the north east corner of survey No. 9987 at 174 poles to three beeches; thence S. 78. E. 255 1/2 poles to a small beech; thence S. 12. E. 220 poles to an ash and two beeches north east corner to Burdell's said survey; thence with his line S. 78 N. 255 1/2 poles to the beginning.

Levi D. Sharp
 Hilkiak Rosbag } C.C.
 Wilson S. Thompson M.R.

Samuel Forer D.S.
 March 9th 1820
 June 27th 1821



Surveyed for James Taylor and William Taylor 999²/₃ acres of land on part of a military warrant and part of one James 111 acres part of No. 5440 and William 888²/₃ acres on No. 5453 on the waters of Big Miami's beginning at three beeches south east corner to Robert Vance and others survey No. 9953 and north west corner to Wallace and others survey No. 9934; thence with their line N. 78. E. 400 poles

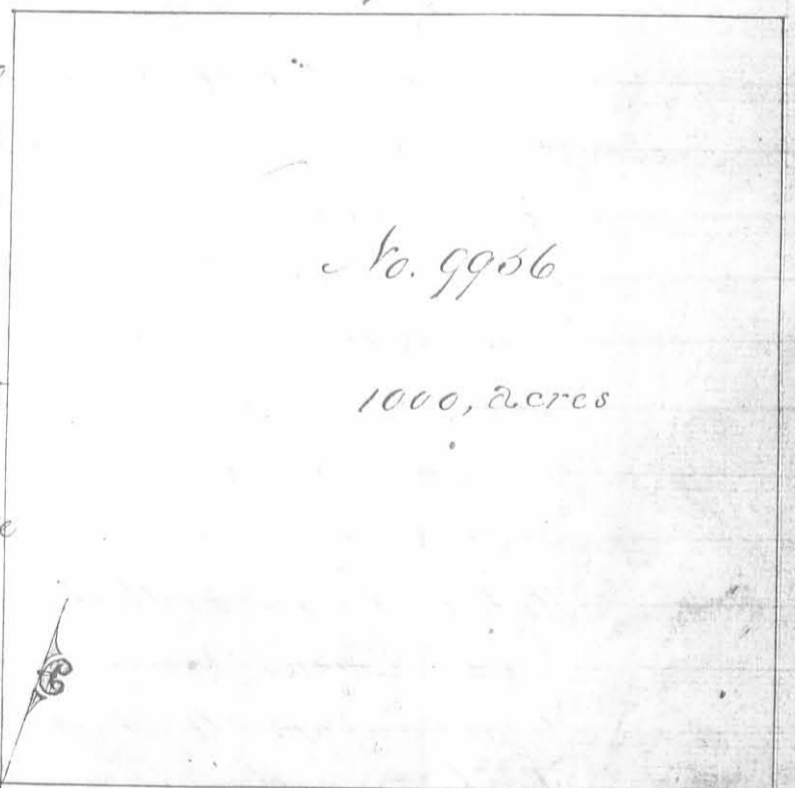
to three beeches; thence N. 12 W. 400 poles crossing a branch at 180 and one at 330 poles to three beeches; thence S. 78 W. 400 poles crossing a branch at 92 poles to a sugar tree and three beeches north east corner to said Vance and others survey; thence with their line S. 12 E. 400 poles to the beginning.

Levi D. Sharp
 Hilkiak Rosebrag & Co.
 Wilson S. Thompson M.k.r.

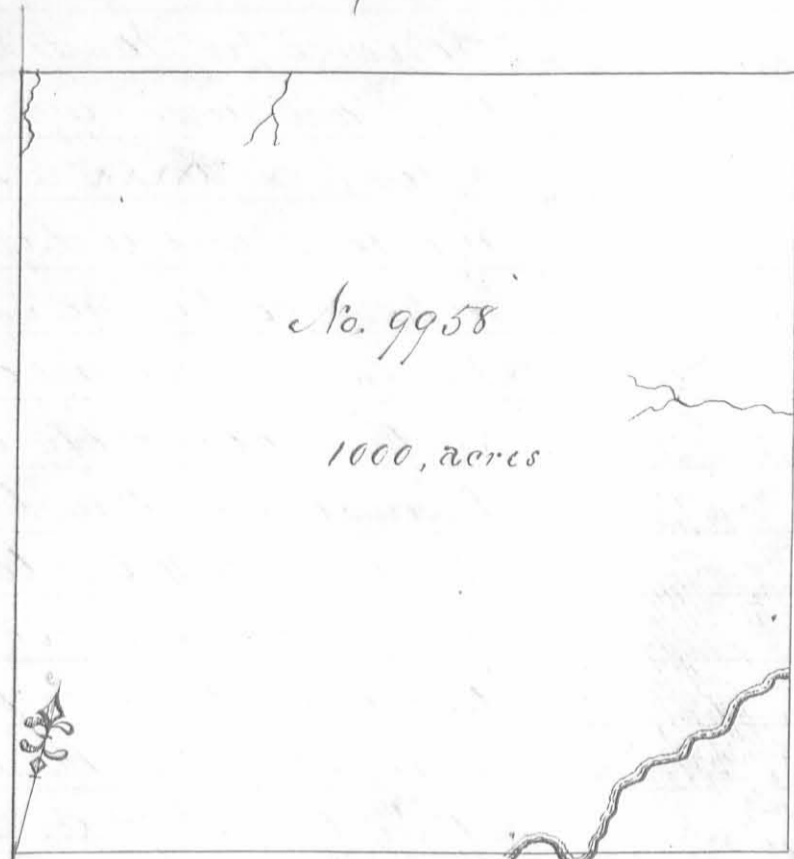
Samuel Forrer D.S.
 January 31st 1820
 March 14th 1821

Surveyed for James Wright 1000 acres of land on part of a military warrant No. 2740 on the waters of Scioto; beginning at two beeches south east corner of James Buntons survey No. 9955 and North west corner to Dun and Harrisons entry No. 9955, thence N. 78 E. 400 poles to two ashes and an Elm; thence N. 12 W. 400 poles to two beeches; thence S. 78 W. 400 poles to a hickory, beech and sugar tree northeast corner to Buntons said survey; thence with his line S. 12, E. 400 poles to the beginning.

Levi D. Sharp
 Hilkiak Rosebrag & Co.
 Wilson S. Thompson M.k.r.



Samuel Forrer D.S.
 January 30th 1820
 July 28th 1820



No. 9958

1000, acres

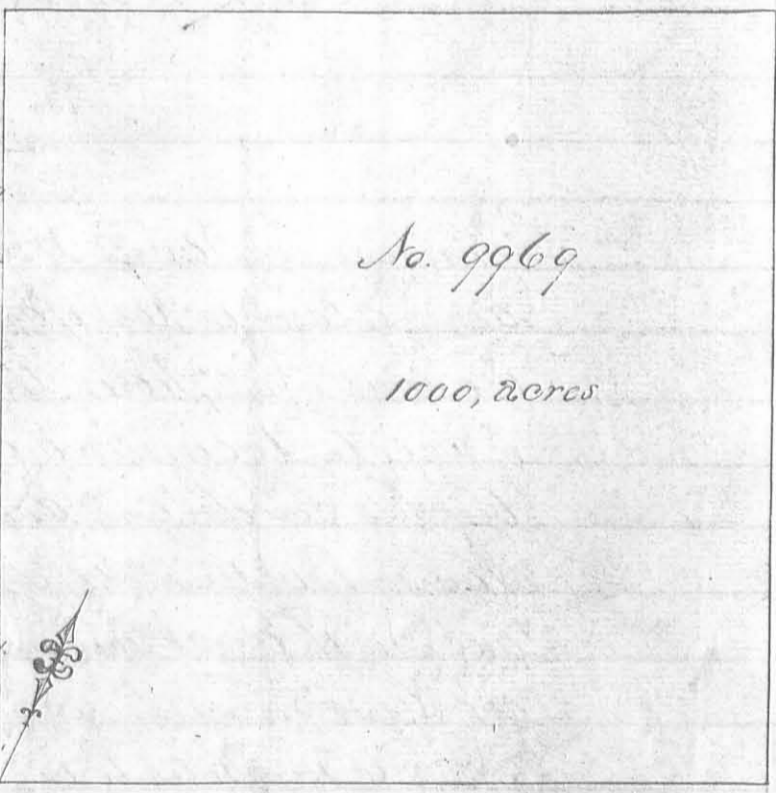
Surveyed for Alexander Parker
his 1000 acres of land on part of a
Military Warrant No. 735 on Rush
Creek: Beginning at two beeches
and a sugar tree North east corner
to Rowland Madisons survey No.
9938; thence N. 12. W. 400 poles
crossing several small branches
to a stake; thence N. 78 E. 400
poles crossing a small branch
at 8 and one at 144 poles to two
buckeyes; thence S. 12 E. 400 poles
crossing a branch at 178 and Rush

Creek at 310 poles to four beeches and a white oak, thence S 78 W. 400
poles crossing the creek at 101 at 118 and at 142 poles to the beginning.

Simon Hager 3
Abraham Hager 3 C.C.
Huer Chapman M.k.r.

Thomas J. McArthur D.S.
January 26th 1821
March 30th 1821

Surveyed for the Representatives of
Francis Taylor and James Taylor
ap^{pr} 1000 acres of land on the following
Military Warrants; Rept of Fr. Tay-
lor 888²/₃ acres on No. 5445, James
Taylor 100 acres on No. 5276 and 71²/₃
acres on No. 5372 in the forks of
Big Miami: Beginning at two
sugar trees and a buckeye South
east corner to Jones and others survey
No 9968; thence N. 78 E. 400 poles
to three beeches north east corner to
George Clarks survey No. 9948; thence N. 12. W. 400 poles to a hickory
lynn and sugar tree; thence S. 78. W. 400 poles to two sugar trees and two
buckeyes north east corner to Jones and others survey; thence S. 12. E. 400
poles to the beginning.



No. 9969

1000, acres

Levi D. Sharp 3
Milkiak Rosebrag 3 C.C.
Wilson S. Thompson M.k.r.

Saml Forrer D.S.
March 1st 1820
July 21st 1820