

Surveyed for Elazer Hendrick  
Apr 202 acres of land on part  
of a Military warrant No. 3195  
on the waters of Mill Creek;

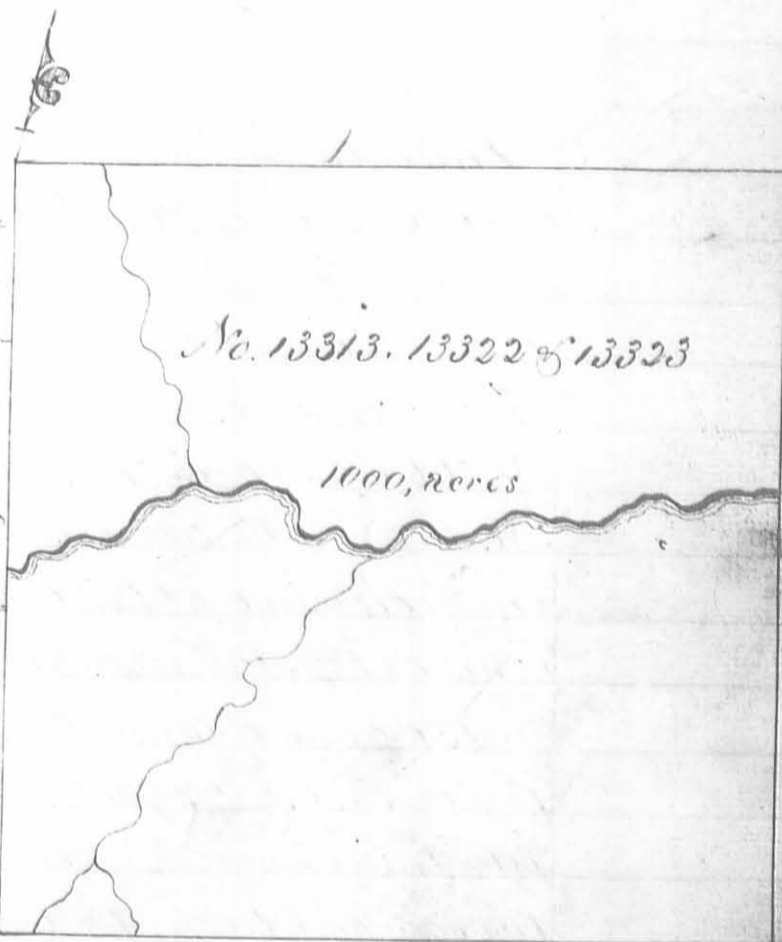
beginning at a stake south east corner to John Evans survey No. 12536, thence N. 78 E 200 poles to a stake, thence S. 12 E 81 poles to two Sugar trees North east corner to the Representative of Charles Porter's survey No. 9888, thence with the line of said survey S 78 W 400 poles to a blue ash tree sugar trees and a beech the North east corner thereof, thence N. 12 W. 81 poles to a stake south west corner to Evans said survey, thence with the line thereof N. 78 E. 200 poles to the beginning.

George Chubb 3  
Peter Carson 3 & C.  
John Blue M.k.r.

E. J. Hendrick D. S.  
February 28, 1835  
November 10, 1835

Surveyed for Duncan McArthur Apr 1000 acres of land on three Military warrant No 869, 1625 and 1910 for 200 acres each and 400 on part of No. 6418 (which had been patented and lost by interference) and on entries No. 13313, 13322 & 13323 on Rush Creek; beginning at three beeches southwest corner to James Wright's survey No. 9956 and the North east corner of Richard Summers survey No. 10041, thence with the line of the last mentioned survey S. 12 E. 400 poles crossing Rush Creek to three beeches Northwest corner to John Bridges and others survey No. 9911; thence with the line of the last mentioned survey N. 78 E 400 poles crossing several branches to three beeches Northeast corner to said survey; thence N 12 W 400 poles crossing Rush Creek and several small branches to two ashes and an Elm southeast corner to Wright's said survey, thence with the line thereof S. 78 W. 400 poles crossing several branches to the beginning.

David Chapman 3  
James & Donaldson 3 & C.  
Niram Peck M.k.r.



E. J. Hendrick D. S.  
October 16<sup>th</sup> 1832  
September 9<sup>th</sup> 1835

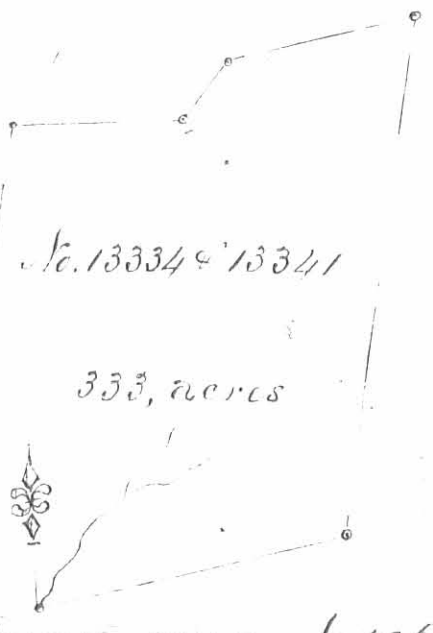
No. 13,27  
100 acres

Surveyed for Cadwallader Wallace 100 acres  
of land in part of a Military Warrant No. 2,441  
on the waters of Mill Creek; beginning at a stake  
North east corner to John Evans survey No. 12536  
thence S. 12. 8' 80 poles to a stake in the line of Charles F. Hendricks sur-  
vey No. 13,000; thence with said line S. 75 E. 200 poles to a stake  
North east corner to said survey; thence S. 12 N. 80 poles to a  
stake South east corner to Muncie's survey No. 10631  
thence with the line of M'Arthur's survey No. 10631  
beginning.

John Green  
Charles Jones  
George Duke

Cadwallader Wallace D. S.  
January 9. 1836  
January 17. 1836

Surveyed for Walter Dun 333 acres  
and as executed John Graham dec. 333 acres  
land in part of five Military Warrants. Dun in  
his own right 81 acres on No. 6668, 53 acres on  
No. 6626, 40 3/4 acres on No. 6648 and 70 acres on  
No. 5661 and as Ex'or as aforesaid 133 acres on  
No. 5758 on the waters of the R.R. Manantia  
cr. Beginning at two ashes and three  
elms at the Northwest corner of Charles  
Barnett's survey No. 10563  
for 130 acres of land; thence S. 75 N. 76 poles to two ashes and a maple  
thence N. 9. E. 72 poles to three red elms and a buckeye, thence East 24  
poles to two small hickories and a buckeye, thence N. 9 E. 200 poles to a  
bur oak and buck; thence East 60 poles to a buckeye and lynn; thence  
N. 40 E. 37 poles to a red oak and buckeye; thence N. 75 E. 103 poles  
to two bushes and a red elm in the line of George Samber's survey No. 12279  
thence with his line and the line of Nathaniel Knapic's entry No. 12178  
S. 9. N. 273 poles to two bushes, an elm and small blue oak at the southwest  
corner of Knapic's said entry and at the Northwest corner of Barnett's said sur-  
vey, thence with Barnett's North line S. 75 N. 167 poles to the beginning  
all the said lines excepting Barnett's line and all the corners called for excepting  
Barnett's two corners run run and marked on the 26<sup>th</sup> of April 1824.



Archibald M'Arthur  
David M'Arthur  
Nathaniel Knapic

Walter Dun D. S.  
September 18. 1832  
September 19. 1832

No. 13316.  
13317  
13410  
307 3/4 acres

Surveyed for Duncan McArthur 307 3/4 acres of land on  
basis of military warrants to wit: 166 3/4 acres on No 1628.  
25 acres on No 3477, 50 acres on No. 5169, 50 acres on No 5537  
and 10 acres on No 4016 (some of which have been patented and  
lost by intemperance) and on entries No. 13316, 13317 & 13410  
on the water of Mill creek; beginning at the hickories, the  
sugar trees and an Ironwood. North east corner to Charles  
Mumphreys survey, No. 3477 in or near the Greenville Treaty  
line; thence with the line of Mumphreys said survey S 10  
E, 370 poles crossing a branch to a white walnut, beech  
and sugar tree South east corner to said survey in the line  
of David Bedingers survey, No. 842; thence with said  
line N. 80. E. 131 poles passing the North east corner of Bedingers said  
survey at 100 poles to a sugar tree; thence N. 10. W. 370 poles crossing  
several small branches to a beech in the Greenville Treaty line; thence  
with said line S. 80. W. 1831 poles to the beginning.

William Summers 2  
Stephen Green 3 C.C.  
David Maryman M.k.r.

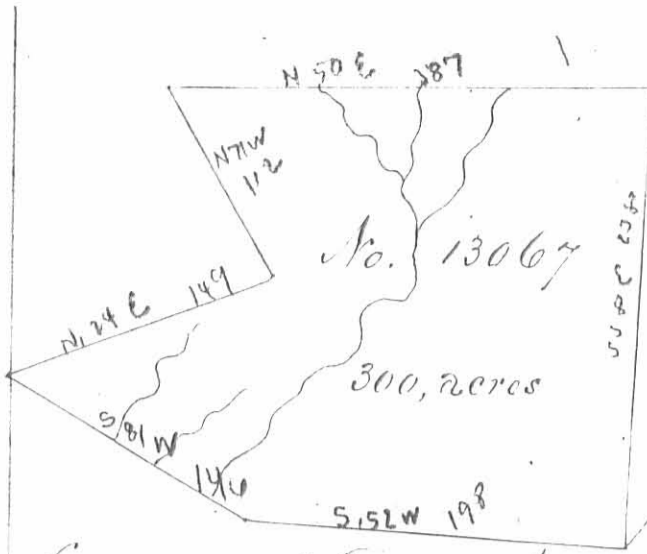
E. P. Kendrick D. S.  
September 7<sup>th</sup> 1833  
September 6<sup>th</sup> 1833

Surveyed for the heirs of Duncan McArthur 291 3/4  
acres of land on basis of military warrants to wit:  
166 3/4 acres on No 1628. 25 acres on No. 3477, 50 acres on  
No 5169 and No 5537, some of which have been patented  
and lost by intemperance on the water of Mill creek :-  
Beginning at the hickories, the sugar trees and an  
ironwood North east corner to Charles Mumphreys  
survey, No 3477 in or near the Greenville Treaty line, thence  
with the line of Mumphreys said survey S 10 E, 350 poles  
crossing a branch to a white walnut beech and sugar  
tree South east corner to said survey in the line of Dav-  
id Bedingers survey, No. 842, thence with said line N. 80 E. 130 poles  
passing the North east corner of Bedingers said survey at 100 poles  
to a sugar tree; thence N 10 W. 350 poles crossing several small  
branches to a beech in the Greenville Treaty line, thence with said  
S. 80. W. 150 poles to the beginning.

No. 13316  
13317  
13410  
291 3/4 acres

William Summers 2  
Stephen Green 3 C.C.  
David Maryman M.k.r.

E. P. Kendrick D. S.  
March 20<sup>th</sup> 1843  
April 10<sup>th</sup> 1843



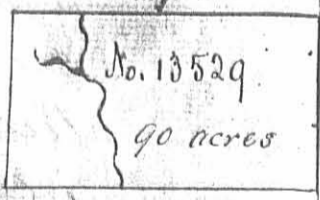
Surveyed for Samuel Hyde Sanders ap<sup>o</sup> 300 acres of land on part of a Military warrant No. 6666 on the waters of Mill Creek; Beginning at two beeches and an ash south corner to Littleberry Aldridge survey No. 937; 2. West corner to Joseph and Benjamin W. Ladds and Thomas Arrell survey No. 9198 & north corner to Thomas Perkins survey No. 9370; thence with Perkins line S. 52. W. 198 poles to an ash and beech west corner to said survey and North corner to Walter Duns No. 10426. 10427 & 11141, thence with his line S 81 W. 146 poles crossing several branches to two beeches a sassafras and red oak corner to said survey and corner to James Herrens survey No. 11076; thence with his line N. 24 E. 149 poles to two beeches and an ash corner to said survey; thence with another line thereof N. 71. W. 112 poles to a sugar tree corner to said survey and corner to Evans & McArthur's survey No. 4948. 9423 & 9872 thence with their line N. 30. E 38 poles crossing several branches to a stake corner to their survey in the line of John McDonald's survey No. 5088, thence with said line S. 38 E. 12 poles to three beeches and a sugar tree North corner to Aldridge's said survey; thence with his line S. 52 W. 134 poles to a lym dogwood, hickory ironwood and sugar tree west corner to said survey; thence with another line thereof S. 38 E 238 poles to the beginning.

Ladds and Thomas Arrell survey No. 9198 & north corner to Thomas Perkins survey No. 9370; thence with Perkins line S. 52. W. 198 poles to an ash and beech west corner to said survey and North corner to Walter Duns No. 10426. 10427 & 11141, thence with his line S 81 W. 146 poles crossing several branches to two beeches a sassafras and red oak corner to said survey and corner to James Herrens survey No. 11076; thence with his line N. 24 E. 149 poles to two beeches and an ash corner to said survey; thence with another line thereof N. 71. W. 112 poles to a sugar tree corner to said survey and corner to Evans & McArthur's survey No. 4948. 9423 & 9872 thence with their line N. 30. E 38 poles crossing several branches to a stake corner to their survey in the line of John McDonald's survey No. 5088, thence with said line S. 38 E. 12 poles to three beeches and a sugar tree North corner to Aldridge's said survey; thence with his line S. 52 W. 134 poles to a lym dogwood, hickory ironwood and sugar tree west corner to said survey; thence with another line thereof S. 38 E 238 poles to the beginning.

William Nance  
Asahel Nance  
James S Hunt M.k.r.

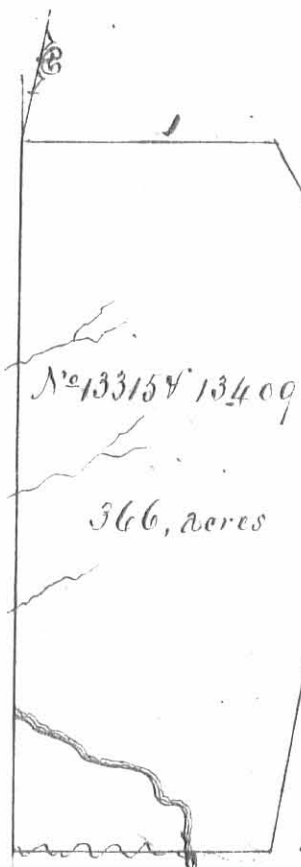
Cadwalader Wallace D.S.  
Feb 5<sup>th</sup> 1830  
Feb 8<sup>th</sup> 1830

Surveyed for John T Bayless ap<sup>o</sup> 90 acres of land on part of a military warrant No. 6665 on the waters of Mill Creek; beginning at a stake lym, Elm and two hickories an Easterly corner to Duncan McArthur's survey No. 13432 and corner to said McArthur and John Evans survey No 12103 &c of 576 acres; thence with the line of the just mentioned survey North 90 poles to three ashes; thence East 160 poles to a stake thence south 90 poles to an Elm beech and buckeye in the line of said survey No 12103 &c thence with the line thereof west 160 poles crossing a branch to the beginning.



Asahel Garwood  
John Garwood  
Samuel Suffer No

E. J. Kendrick D.S.  
September 18, 1834  
September 15 1834



Surveyed for Duncan M. Arthur of  $366$  acres of land on part of two Military Warrants to wit: 300 acres on No 1628 and 66 acres on No 5536 (which have been patented and lost by interference) and on entries No. 13315 & 13409 on Mill Creek; beginning at a sugar tree and two large ashes North east corner to Daniel Pedrigas survey No. 842; thence with his line S 10 E 370 poles crossing several branches and Mill creek to three hickories on the North side of a branch in the line of John McDonalds survey No. 5889, thence with said line N. 83. E 132 poles crossing the branch several times and the creek to a sugar tree beech and hickory Northeast corner to McDonalds said survey in the west line of Benjamin Biggs survey No 5209, thence with said line and the line of William Evans survey No. 6257 North 285 poles to a sugar tree, black oak and hickory northwest corner to Evans said survey, thence N. 40 W. 103 poles to a stake thence S. 80 W. 132 poles to the beginning.

Daniel Garwood 3  
William Summers 3 C.C.  
Stephen Green M.k.r.

C. P. Kendrick D. S.  
September 7<sup>th</sup> 1833  
September 9<sup>th</sup> 1833

Surveyed for James Taylor of  $3\frac{3}{4}$  acres of land on part of a Military Warrant No. 6198 on Rush Creek; beginning at a stake Northeast corner to Cadwallader Wallace survey No. 13593 of 25 acres and corner to M. Arthur, Evans & others survey No. 18179 & 10404 in the line of John Jamison and others survey No 9887, thence with the line of the last named survey passing the southwest corner thereof and with the line of John Jamisons survey No. 9887 and binding thereon S. 178 poles to a stake in the line of Charles Scotts survey No. 11016 thence with the line of said Scotts survey S 88 $\frac{1}{2}$  W. 7 poles to five willows Southeast corner to said Wallaces said survey; thence with the line of said survey correcting the course thereof and binding thereon N 9 $\frac{1}{2}$  W. 178 poles to the beginning.

John Thomas 3  
Charles Wilson 3 C.C.  
Willis Hughes M.k.r.

C. P. Kendrick D. S.  
February 12 1838  
February 5. 1838

No. 13137

85 1/3 acres

Surveyed for John J. Bayless Apr. 85 1/3 acres of land on part of a Military warrant No 6665 on the waters of the Big Meamis; beginning at a beech and two sugar trees Northeast corner to John Austons survey No 13116 in the South line of Ephraim Ralphs survey No 9990 thence with the line of said Austons survey S. 12 E. 124 poles crossing a branch to a white Oak cherry and iron wood Southeast corner of said Auston, thence N. 78 E 16 poles to a stake in the line of Robert Means survey No. 9973, thence with said line N. 12, W. 15 poles to an ash and elm in a swamp corner to the last mentioned survey, thence with another line thereof N. 78 E 119 poles to a stake southwest corner to John A. Reids survey No. 12074, thence with the line of Reids said survey N 12 W 109 poles crossing a branch to a stake Northwest corner to said survey in the line of said survey No 9990, thence with said line S, 8 W. 135 poles to the beginning.

Julius Crawford

Edwin House S. C. C.

John Smith M. R. S.

E. J. Hendrick D. S.

April 10<sup>th</sup> 1834April 29<sup>th</sup> 1834

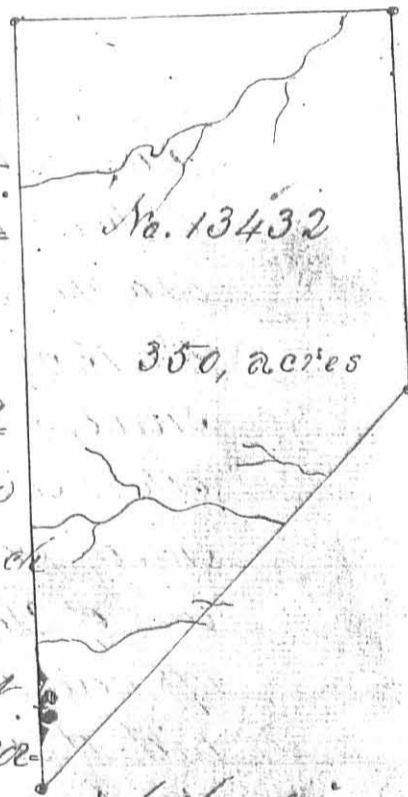
Surveyed for Duncan McArthur Apr. 350 acres of land, 200 acres on part of Military warrant No. 5743 and 150 acres on part of No 5799. which has been patented and lost by interference) on entry No. 13432 on the waters of Mill Creek, beginning at two beeches a sugar tree and large white oak South East corner to Robert Means survey No. 5091, thence with the line of said survey North 400 poles crossing a branch at 75 poles one at 136 poles and one at 316 poles to a hickory ash and lynn Northeast corner to Means said survey and Southwest corner to Strother Jones survey No 4210, thence with the line of Jones said survey East 200 poles crossing a large branch to an ash maple and elm in Jones line; thence south 196 poles to a stake, thence S. 45. W. 280 poles crossing several branches to the beginning.

John Bushong

Stephen Green S. C. C.

Levi Garwood M. R. S.

E. J. Hendrick D. S.

November 16<sup>th</sup> 1833November 17<sup>th</sup> 1833

No. 13393

850, acres

Surveyed for Cadwallader Wallace 850 acres of land on part of a Military warrant No. 6659 on the waters of the big Miami River: Beginning at an ash and beech stump in the "fallen timber", most easterly corner to George Lambert's survey No. 12277 of 500 acres, thence S 43 W 548 poles to a stake

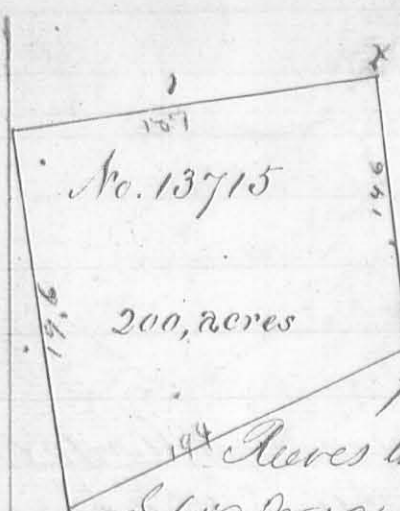
South corner to said Lambert's survey No. 12277 of 1000 acres in the line of Valentine Peers survey No. 12276 of 1666 $\frac{2}{3}$  acres, thence with said line S 12 E 213 poles to a stake northwesterly corner to Churchill Jones and other survey No. 9968, thence N. 78 E. 400 poles to two beeches Northeastly corner to their survey, Northwesterly corner to Francis Taylor and James Taylor's survey No. 9969 and Southwesterly corner to Mary Vance's survey No. 12311, thence N. 12 W. 176 poles to a stake Northwesterly corner to her said survey, thence N. 12, W. 224 poles to a stake in a prairie Northwesterly corner to Thomas Sears survey No. 12278, thence N. 78 E. 124 poles to two ashes and a maple Southwesterly corner to Walter Dan's survey No. 13334 & 13341, thence N. 9 E. 75 poles to three elms and a buckeye corner to said survey, thence East 25 poles to two small hickories and a buckeye corner to said survey, thence N. 9 E 77 poles to a stake in the line of said survey; thence N. 12, W. 103 poles to the beginning.

Henry Stamates 3  
James Stamates 3 66

John Moore Mkr.

Cadwallader Wallace D. S.

June 22<sup>d</sup> 1833July 23<sup>d</sup> 1833



Surveyed for John Evans Apr 200 acres of land on a Military Warrant No. 6574 on the waters of the Big Miami River. Beginning at a stake southeast corner to Aaron and Grahams survey No. 12742 in the west line of Nathan Reeves survey No. 9927. 144 poles S. 12 E. from his Northwest corner, thence with Reeves line S. 12 E. 146 poles to an ash and Maple, thence S. 61 1/2 W. 194 poles to an ash and red oak, thence N 12 W. 196 to two white oaks and a hickory in the East line of Walter Duns survey No. 9925, 9946 & 10121 and southeast corner to said Aaron & Grahams survey, thence with their line N. 78 E 187 poles to the beginning.

James King  
William Jones  
Charles Colt Mkr.

C. P. Kendrick D.S.  
March 10. 1836  
March 18. 1836

Surveyed for Cadwallader Wallace Apr 112 acres of land on part of a Military Warrant No. 5052 on the waters of the Scioto River, beginning at two elms and a bur oak south easterly corner to Lyne Sterlings survey No. 13406 in the line of Rees Hills survey No. 12180, thence with said line S 12 E 117 poles to two sugar trees southwest corner to said Hills survey, thence S. 78 W. 160 poles to a stake S E corner to John Wackers survey No. 12162, thence N. 12 W. 90 poles to a hickory and sugar tree corner to Sterlings said survey, thence N. 57 E. 108 poles to a white oak corner to said survey, thence East 62 poles to the beginning.



John Cox  
Peter Fink  
George Jenkins Mkr.

Cadwallader Wallace D.S.  
October 30. 1834  
November 5. 1834



No. 13593

150 acres

Surveyed for Cadwallader Wallace Apr<sup>15</sup> 150 acres of land on part of a Military Warrant No. 5052 on the waters of Rush Creek; beginning at an ash and two beches N. E. corner to the representatives of James Higgins survey No. 10837, thence S. 12 E. 240 poles to a stake in the line of the Representatives of Daniel Atkins survey No. 10387 & 10388, thence with said line N. 78 E. 100 poles to a stake in the line of Archibald Gordons survey No. 12077 thence with said N. 12 W. 240 poles to a hickory and elm N. W. corner to Gordons said survey, thence S. 78 W. 100 poles to the beginning.

John Cox Cadwallader Wallace J. S.

Peter Funk C. C. October 30. 1834

George Jenkins M. K. R. November 5. 1834

Surveyed for Cadwallader Wallace Apr<sup>15</sup> 100 acres of land on part of a Military Warrant No. 5052 on the waters of Rush Creek, beginning at a white oak ash and hickory S. W. corner to Falroy Haziers survey No. 3691, thence S. 7. W. 100 poles to a beech S. E. corner to James Dilmons survey No. 5635 thence S. 83 E. 100 poles to two beches and a red oak S. W. corner to Thomas Worthingtons survey No. 6156 thence N. 78 160 poles to two beches and an ash N. W. corner to said survey, thence N. 83 E. 100 poles to the beginning.

No. 13593

100 acres

John Cox Cadwallader Wallace J. S.

Peter Funk C. C. October 30. 1834

George Jenkins M. K. R. November 5. 1834

No. 13593

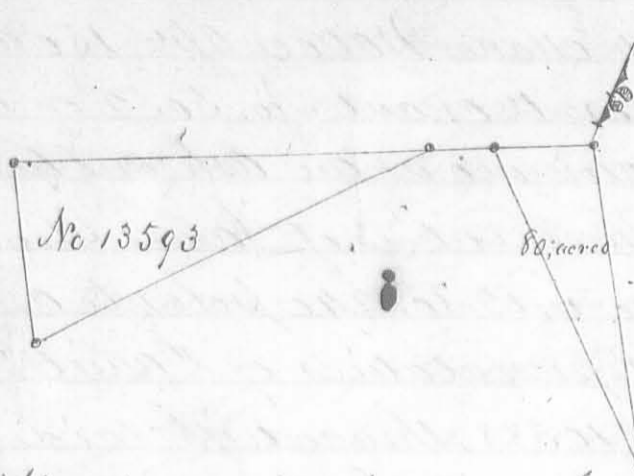
25 acres

Surveyed for Cadwallader Wallace Apr<sup>15</sup> 25 acres of land on part of Military warrant No. 5052 on Rush Creek; beginning at five willows N. E. corner to Charles Scott survey No. 11016, thence S. 88 W. 75 poles to a stake in the line of Duncan McArthur and others survey No. 10179 & 10404, thence with said line N. 26 E. 120 poles crossing the creek to a stake corner to said survey in the line of John Swan's and other survey No. 9887 thence with the said line S. 12 E. 110 poles crossing the creek to the beginning.

John Cox Cadwallader Wallace J. S.  
Peter Funk C. C.

George Jenkins M. K. R. October 30. 1834

November 5. 1834



Surveyed for Cadwallader Wallace  
 up<sup>r</sup> 80 acres of land on part of a mili-  
 tary warrant No 5052 on the waters  
 of Mead River; beginning at two beeches  
 N. W. corner to Thomas No 66 survey  
 No. 2674, thence S. 16 E 170 poles to an  
 ironwood and beech east corner to John

Moore's survey No 6121 thence N 32 W 180 poles to a stake in the  
 line of said survey, thence S 80 W 37 poles to a stake in the line  
 of said survey, thence with said line S 58 W 228 poles to two pop-  
 lars a sugar tree and beech corner to said survey in the line of  
 the Representatives of James Calderwoods survey No. 3139 thence  
 with said line N. 16 W. 91 poles to a stake in the line of Miccaur  
 Cochran's survey No. 3438, thence with said line and the line of  
 said Cochran's survey No 3437 N. 80 E. 304 poles to the beginning

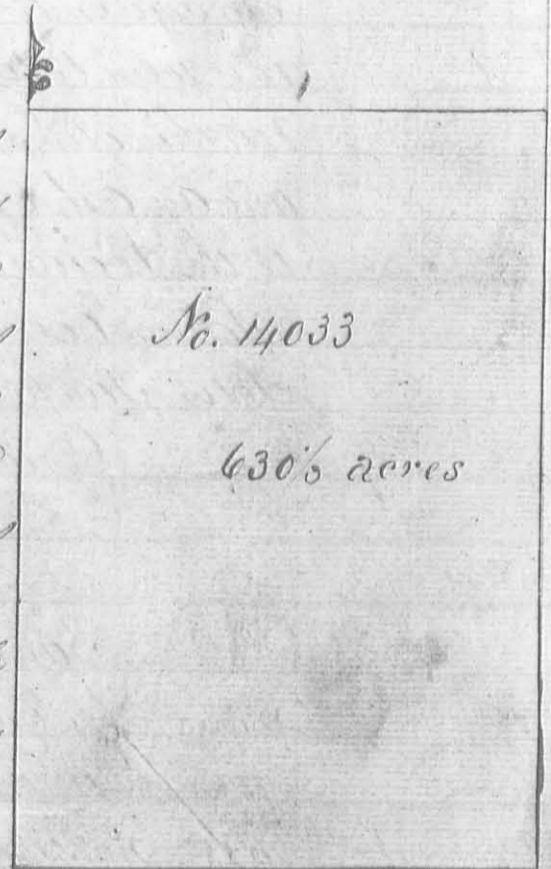
John Cox  
 Peter Fink 3 No. 6  
 George Jenkins No.

Cadwallader Wallace D. S.  
 October 30. 1834  
 November 5. 1834

Surveyed for William Madison and James  
 Taylor up<sup>r</sup> 630 1/2 acres of land on part of  
 two Military warrants to wit: Madison  
 333 1/2 acres on No 8484 and Taylor 297 acres  
 on No 8504 on the waters of Cherokee mans  
 run; Beginning at a stake, a hickory and  
 two Red oaks Northeast corner to Thomas  
 Pearsons survey No 9906 thence with his  
 line S 12 E 395 poles to a stake and double  
 Ironwood Southeast corner to said Pear-  
 sons survey, thence with a line of Joseph  
 Hites survey No. 9884 N. 77:26 E 264  
 poles to an ash, beech and red oak North east corner to Hites  
 said survey, thence N. 12. W. 392 poles to a hickory beech  
 black ash, and three horn beams corner to survey No 9931. 9932  
 & 9907 thence S 78 W 264 poles to the beginning.

David S Dawson  
 Jope Coffey 3 No. 6  
 David Coffey M

C. P. Hendrick D. S.  
 May 11. 1838  
 May 14. 1838



No. 14039

180 acres

Surveyed for James Taylor & James Taylor & wife  
180 acres of land on part of four Military War-  
rants to wit: James Taylor 100 acres on No 6429  
50 acres on No 6435 and 25 acres on No. 5450  
and James Taylor & wife 5 acres on No 8504 on the  
waters of Mill creek; beginning at two Su-  
gar trees southwest corner to survey No. 9890, thence S 78  
W. 185<sup>1</sup>/<sub>2</sub> poles to two beeches and a sugar tree S.E. corner to Taylor  
and Mairs survey No. 9889, thence with their line N. 12 W. 158  
poles to two sugar trees and a beech Northeast corner to said  
survey No. 9889 in the line of survey No. 12474, thence with  
said line N. 78 E 185<sup>1</sup>/<sub>2</sub> poles to a lynn in the line of survey  
No. 9890 and corner to said survey No. 12474, thence with the  
line of survey No 9890 S. 12 E. 158 poles to the beginning.

Sepe Coffle

Peter Coffle

S. S. Dawson M. K. R.

C. P. Hendrick D. S.

May 15. 1838

May 17. 1838

Surveyed for Thomas Lucas and Margey or Mary  
Vance 500 acres of land on part of two Military  
warrants Lucas. 280 acres on part of No 6527  
and Vance 220 acres on part of No 6560 on the  
waters of the big Miami: Beginning at two oak  
and three elms north west corner to Chidwell  
Barrett's survey No 10503 thence with his line  
S 12 E 400 poles to a stake in the line of the  
Representatives of Francis Taylor's survey  
No. 9969 thence with their line S. 78 W 200 poles  
to two beech, their Northwest corner and corner  
to Jones, Taylor and Steel's survey No 9968  
thence N 12 W 400 poles to a stake, thence N. 78 E 200 poles  
to the beginning

Daria Jones

Ephraim Merrill

Matthew S. Cook M. K. R.

Thomas S. Arthur D. S.

October 10. 1824

Dec 21. 1824

No 122788

12311

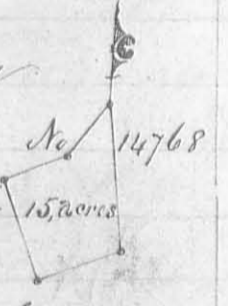
500 acres

No. 12278  
280, acres

Surveyed for Thomas Lucas 280 acres of land on part of a Military Warrant No. 6547 on the waters of the Big Miami: Beginning at two ashes and three elms Northwest corner to Chiswell Bennetts survey No. 10503, thence with his line S. 12. E 224 poles to a stake thence S. 78 W 200 poles to a stake thence N. 12 W 224 poles to a stake, thence N 78 E. 200 poles to the beginning.

Peter Van Clarke  
Martin Van Slicke 3 C.C.  
Rodolphus Morris M.h.r.  
C. J. Kendrick D.S.  
October 1<sup>st</sup> 1832  
October 20<sup>th</sup> 1832

Surveyed for John Coffey 15 acres of land on part of a Military warrant (exchange) No. 470 on the waters of Turkey run a branch of Scioto Runk Creek: Beginning at a white oak and hickory in the line of George Rogers survey No. 28230 & 4026, thence with said line S. 32 W 30 1/2 poles crossing a branch at 8 and another at 28 poles to a white oak a southerly corner to said survey, thence with another of its lines S 6 1/2 W. 30 poles to a white oak, thence S 18 E. 51 poles to a red oak and three beeches, thence N. 6 1/2 E. 39 1/2 poles crossing a branch at 18 poles to a white oak maple and sourwood, thence N. 7 1/4 W 7 1/2 poles to the beginning.



Joseph Neuman  
Henry Boldman 3 C.C.  
John Croop, M.  
William Rebe D.S.  
November 10<sup>th</sup> 1842  
November 16<sup>th</sup> 1843

This last survey was copied by mistake, being the same No. of one in Logan County.

No. 14590.  
50, acres

Surveyed for Cadwallader Wallace 50 acres of land on part of a Military Warrant No. 6713 on the waters of Rush Creek. Beginning at a beech and large red oak in the line of Archibald Gordons survey No. 12017, thence with said line S. 12. E. 176 poles to two ashes South west corner to said survey, thence with the line of David Aikin's survey No. 10387 & 10388. S. 78 W. 24 poles to three dogwoods a white walnut and hackberry corner to said survey; thence with another line thereof N. 12 W 60 poles to two beeches and an ash corner to said survey, thence with another line thereof S. 78 W. 5 poles to the south east corner of said Wallace's survey No. 13593. of 150 acres, thence with the line of said survey N. 12 W. 228 poles to the North east corner thereof, thence N. 78 E. 29 poles to a stake in a pond Northwest corner to Gordons said survey, thence with the line thereof S. 12. E 114 poles to the beginning.

William Richards 3  
John Lingrell 3 C.C.  
John Meekins, M.  
Cadwallader Wallace D.S.  
May 25<sup>th</sup> 1840  
May 26<sup>th</sup> 1840

No. 14755  
400 acres  
S 38 E 140

Surveyed for John L Dawson and John Dawson  
approx 400 acres of land in part of two Military war-  
rants to wit: - John L Dawson 200 acres on war-  
rant No 6325 and John Dawson 200 acres on No.  
6063 on the waters of Noice Creek; beginning at two  
hickories and an ash Northwesterly corner to John For-  
daws survey No. 5275 in the line of Richard Cobb  
Survey No 4810, thence S. 38 E 140 poles to two Elms  
and a beech west corner to Young McKimsons sur-  
vey No. 12283, thence with his line N. 52 E 45 7/4 poles  
to two sugar trees in the line of survey No. 12288 &  
12401, thence binding on said survey N. 38 W 140  
poles to three sugar trees easterly corner to Tuttle  
Hudsons survey No. 6232, thence binding there on  
and on said survey No. 4810 S 52 W 45 7/4 poles to

the beginning

John Inskip 3  
Sige M. Carmod 3  
Charles Young Mkr.

C. F. Hendrick D.S.  
November 15<sup>th</sup> 1842  
December 10<sup>th</sup> 1842

Surveyed for Cadwallader Wallace approx 133 1/2 acres  
of land on part of a Military warrant (exchange)  
No. 476 on the waters of Noice Creek: Beginning  
at three ashes Northwest corner to John P Boyles  
survey No. 13529, thence with the line of said survey East 160  
poles to a stake North east corner to said survey, thence S  
90 poles to an elm beech and buckeye South east corner to said  
survey; then East 49 poles to two beeches and an iron wood, thence  
N. 17 1/2 poles to two sugar trees and a hickory south east corner to  
Strother Jones survey No. 4210, thence with the line of said survey  
West 209 poles to an ash maple and elm in said line North  
East corner to Duncan McArthur's survey No. 13432, thence S  
85 poles to the beginning.

No. 14894  
133 1/2 acres

John Johnson 3  
James Arns 3 6 6  
George Green M

Cadwallader Wallace D.S.  
December 22<sup>nd</sup> 1843  
December 23<sup>rd</sup> 1843

12.50

Auditor of State Office  
Columbus December 19, 1850

I John Woods Auditor of State hereby certify that the preceding entries surveys and plats have been carefully compared with the Books of Entries surveys and plats of land in the Virginia Military District in this Office as required by the Act to authorize Copies of entries and surveys in the Virginia Military District to be made, passed on the 19<sup>th</sup> March A.D. 1850, and that said entries surveys and plats are truly taken and copied from the books of entries, surveys and plats of land in the Virginia Military District in this office.

In witness whereof I hereunto set my hand and seal of office on the day and year last above written.



John Woods audy