

SPOONER SURVEY

The following described real estate situated in the Village of Belle Center, Township of Richland, County of Logan, State of Ohio and being a part of Virginia Military Survey No. 9989 and being all of that tract of 0.25 Acres in the name of Eunice S. Spooner as recorded in Deed Volume No. 328 Page 700 (12-31-1969) and now being more particularly described as follows:

Beginning at a 5/8" Rebar set at the southwest corner to Spooner's 0.25 Acre tract and the northwest corner to Ernest Patrick's present 0.25 Acre tract and on the east line of Center Street;

Thence with the east line of Center Street, N. 37°30'00" E. 61.83 feet to a 5/8" Rebar set at the northwest corner to said Spooner's 0.25 Acre tract and the southwest corner to Albin Adkins' present 1.00 Acre tract;

Thence with the line between Spooner and Adkins, S. 52°35'00" E. 182.00 feet to a 5/8" Rebar set at the northeast corner to Spooner's 0.25 Acre tract and the northwest corner to an 0.19 Acre tract in the name of Kenneth Snyder;

Thence with the line between Spooner and Snyder, S. 37°30'00" W. 61.83 feet to a 5/8" Rebar set at the southeast corner to Spooner's 0.25 Acre tract and the southwest corner to Snyder's 0.19 Acre tract and being in the northline of Ruth Cramer's 0.32 Acre tract;

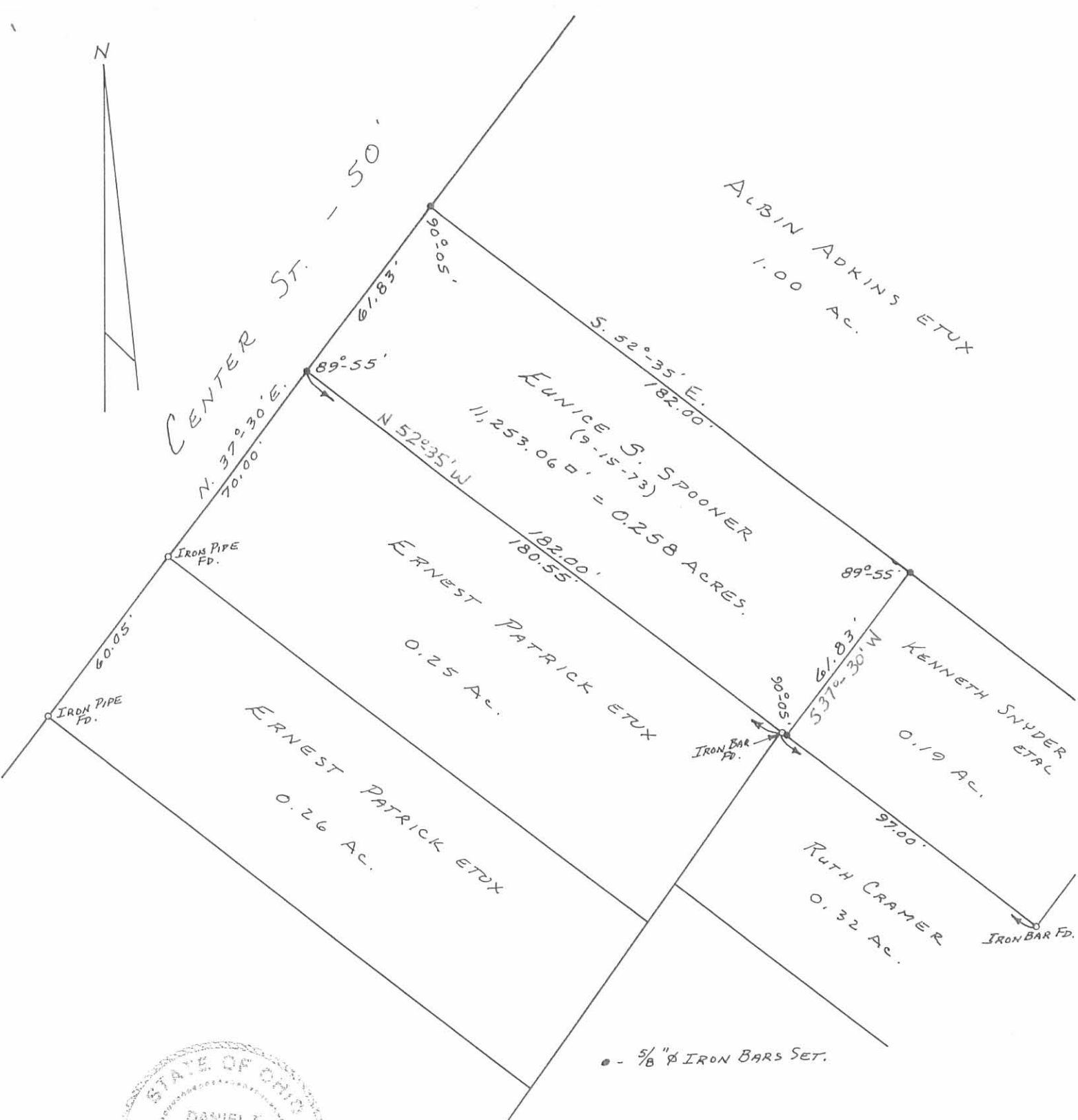
Thence with the line between Spooner and Cramer and the north line of Patrick's 0.25 Acre tract, N. 52°35'00" W. 182.00 feet to the place of beginning, passing through an Iron Bar found at the northeast corner of Patrick's 0.25 Acre tract and the northwest corner to Cramer's tract at 1.45 feet, containing 11,253.06 Square Feet or 0.258 Acres, more or less.

I hereby certify that this description is the result of a field survey made by me on September 15, 1973.



Daniel E. Gilbert
DANIEL E. GILBERT, P.S.
REG. SUR. NO. 5402
400 N. PARK ST.
BELLEFONTAINE, OHIO 43311
TELEPHONE: 1 (313) 593-1428
737

INDEXED ON MAP
5415 1D



● - 5/8" Ø IRON BARS SET.



SURVEYED AND PLATED BY:
DANIEL E. GILBERT, P.S.
REG. SUR. NO. 5402
1041 N. MAIN ST.
BELLEFONTAINE, OHIO 43311

SPOONER SURVEY
V.M.S. No. 9989
VILLAGE OF BELLE CENTER
RICHLAND TOWNSHIP
LOGAN COUNTY, OHIO
SEPTEMBER 15, 1973

SCALE: 1" = 40'

INDEXED ON MAP
5415 1P