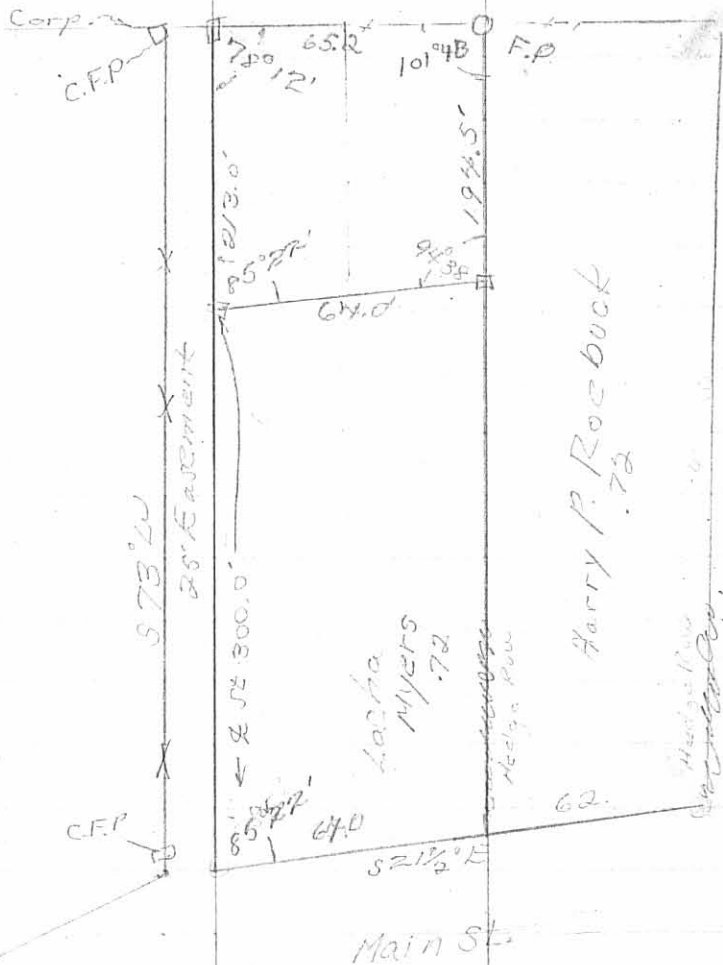


O.K.S #3

Belle Center V.M.S. 9989

Paul Smith 87-2571



July 26, 55

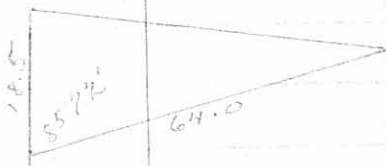
70

S 9 1/2° E 72 Rd 118.8'

N 70 1/2° E 3 1/4 1164 Pike 513.2'

N 19° W 7.57 Rd & Pike 124.9'

S 70 1/2° W 29.2 Rds 4810



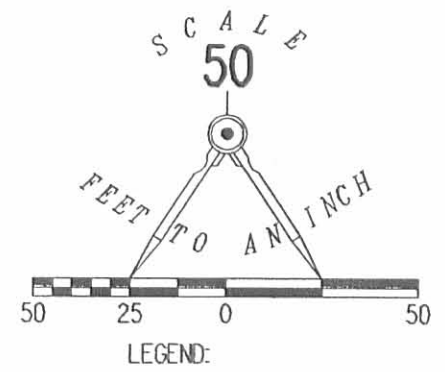
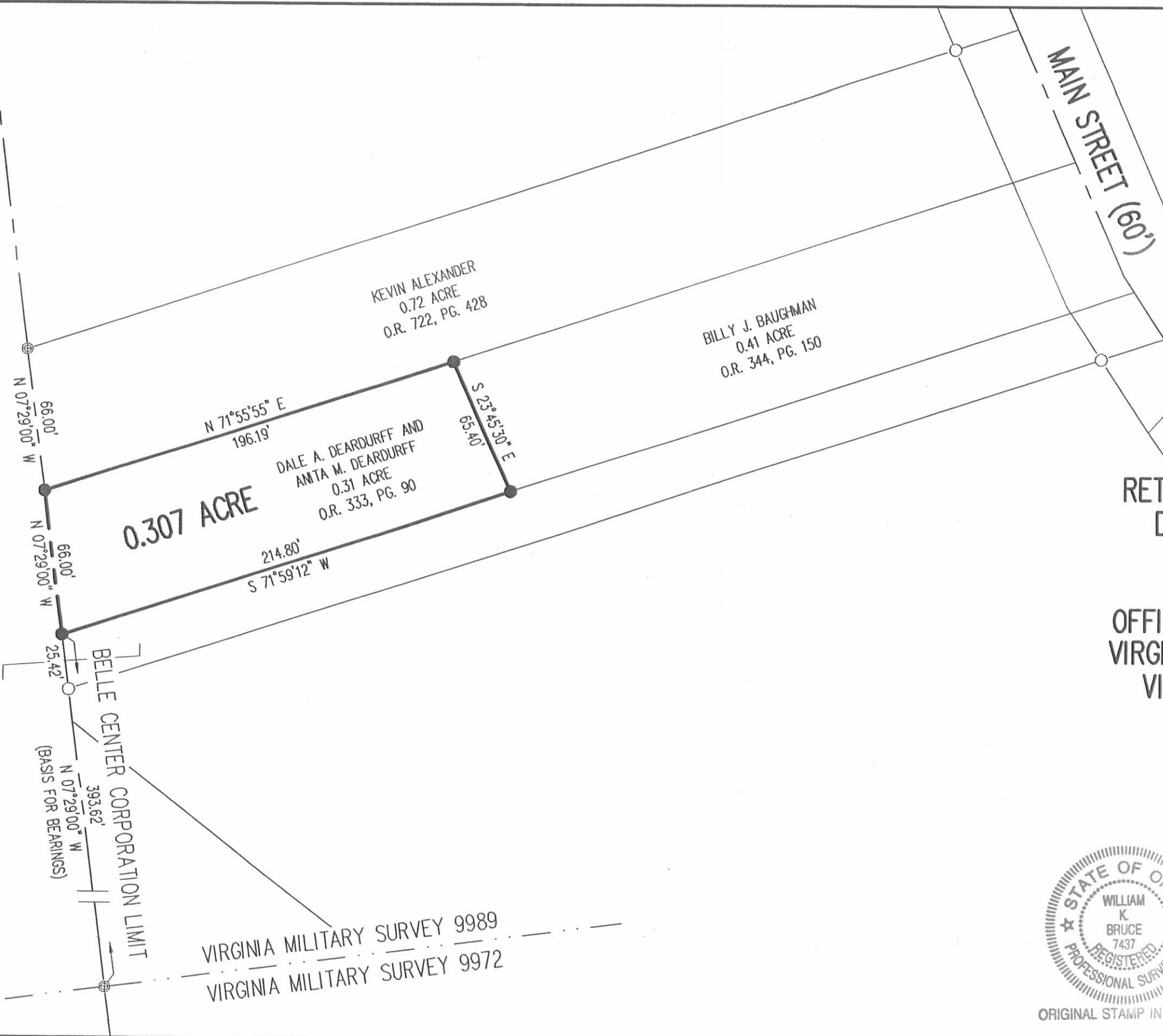
6471 IP

INDEXED ON MAP

REC'D 4-15-08 SMY BK

2 WORKING DAYS  
**BEFORE YOU DIG**  
CALL TOLL FREE **800-362-2764**  
OHIO UTILITIES PROTECTION SERVICE.

KELLY D. MOBLEY, ETAL  
116.226 ACRES  
O.R. 402, PG. 613  
PARCEL A



**RETRACEMENT SURVEY OF THE  
DALE A. DEARDURFF AND  
ANITA M. DEARDURFF  
0.31 ACRE TRACT  
OFFICIAL RECORD 333, PAGE 90  
VIRGINIA MILITARY SURVEY 9989  
VILLAGE OF BELLE CENTER  
RICHLAND TOWNSHIP  
LOGAN COUNTY, OHIO**

SURVEYED BY:



*William K. Bruce*  
WILLIAM K. BRUCE  
PROFESSIONAL SURVEYOR 7437  
APRIL 10, 2008

COPYRIGHT 2008 BY:  
**LEE SURVEYING & MAPPING CO., INC.**  
117 North Madriver Street  
BELLEFONTAINE, OHIO 43311  
(937) 593-7335  
surveys@lsmc.us  
KSS D0408 4617048 L-4617-3

INDEXED ON MAP  
647128

ORIGINAL STAMP IN GREEN