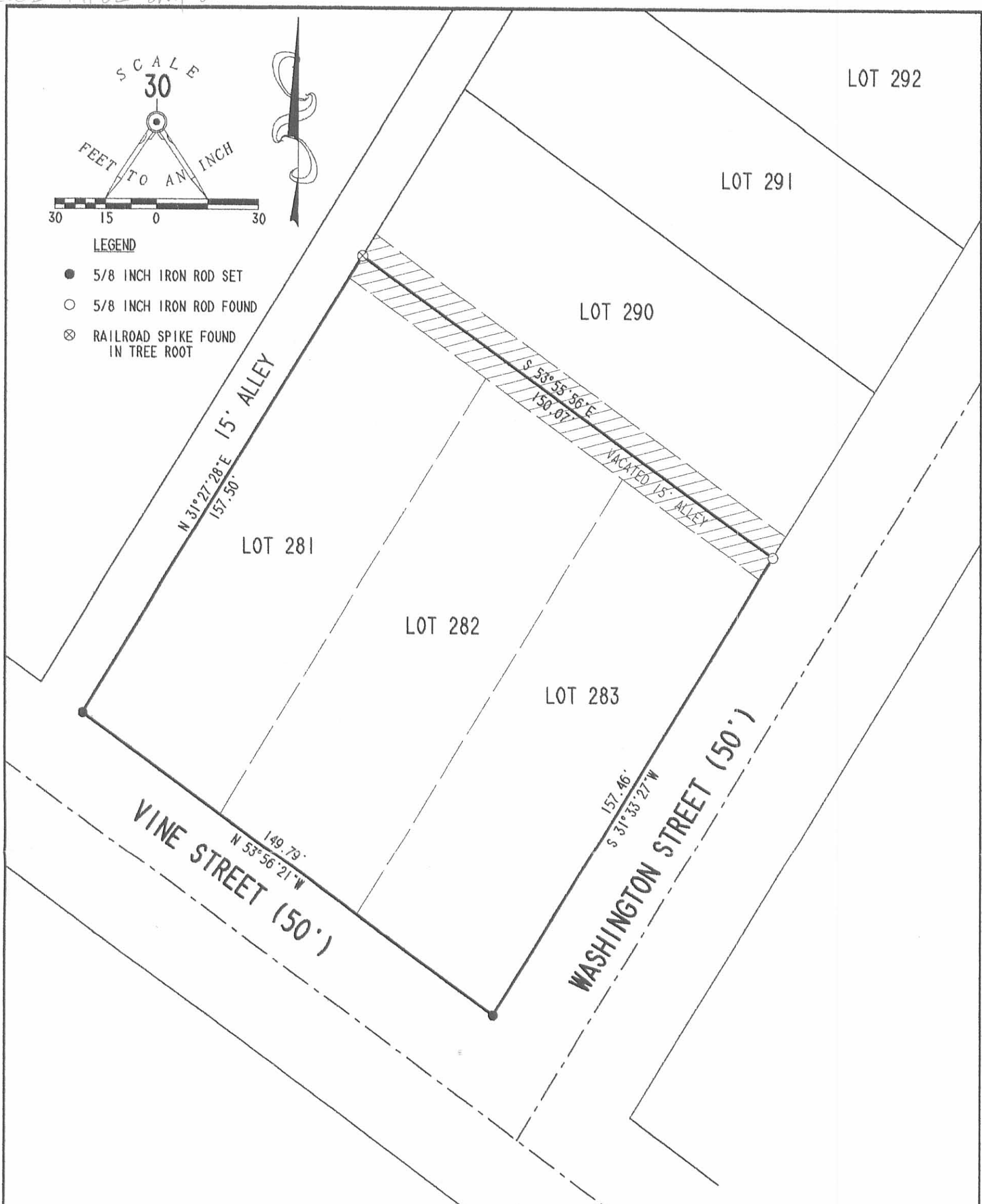


LEGEND

- 5/8 INCH IRON ROD SET
- 5/8 INCH IRON ROD FOUND
- ⊗ RAILROAD SPIKE FOUND IN TREE ROOT



RETRACEMENT SURVEY OF  
 LOT 281, LOT 282 & LOT 283 AND  
 1/2 A VACATED 15' WIDE ALLEY  
 LESTER POWERS ADDITION  
 PLAT CABINET A, SLIDE 101  
 VILLAGE OF BELLE CENTER  
 RICHLAND TOWNSHIP  
 LOGAN COUNTY, OHIO



SURVEYED BY:  
  
 JEFFREY I. LEE  
 PROFESSIONAL SURVEYOR 6359  
 APRIL 5, 2002

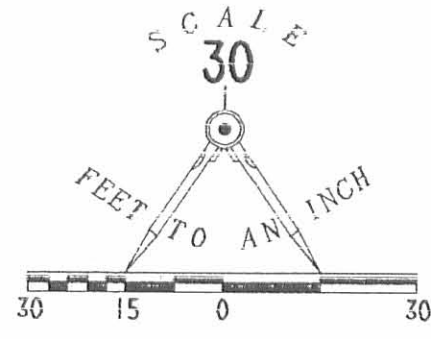
COPYRIGHT 2002 BY:  
 LEE SURVEYING & MAPPING CO., INC.  
 117 North Madriver Street  
 BELLEFONTAINE, OHIO 43311  
 (937) 593-7335

2 WORKING DAYS  
**BEFORE YOU DIG**  
 CALL TOLL FREE **800-362-2764**  
 OHIO UTILITIES PROTECTION SERVICE.

INDEXED ON MAP  
 10764 1P

ORIGINAL STAMP IN GREEN

REC'D 10-6-00 S.M.Y.

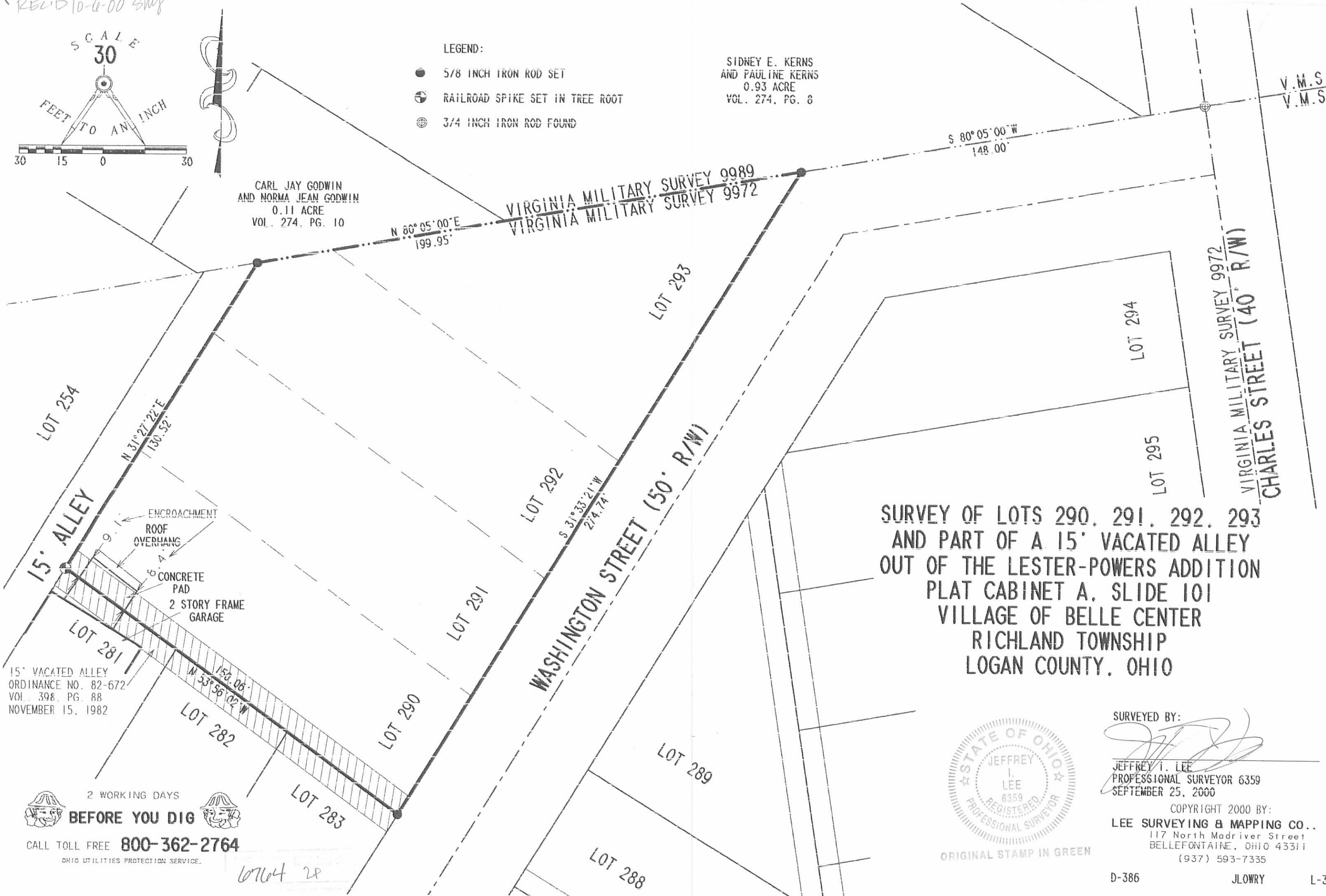


- LEGEND:
- 5/8 INCH IRON ROD SET
  - ⊕ RAILROAD SPIKE SET IN TREE ROOT
  - ⊙ 3/4 INCH IRON ROD FOUND

SIDNEY E. KERNS AND PAULINE KERNS  
0.93 ACRE  
VOL. 274, PG. 8

CARL JAY GODWIN AND NORMA JEAN GODWIN  
0.11 ACRE  
VOL. 274, PG. 10

V.M.S. 14032  
V.M.S. 13116



SURVEY OF LOTS 290, 291, 292, 293 AND PART OF A 15' VACATED ALLEY OUT OF THE LESTER-POWERS ADDITION PLAT CABINET A, SLIDE 101 VILLAGE OF BELLE CENTER RICHLAND TOWNSHIP LOGAN COUNTY, OHIO

15' VACATED ALLEY  
ORDINANCE NO. 82-672  
VOL. 398, PG. 88  
NOVEMBER 15, 1982

ENCROACHMENT  
ROOF OVERHANG  
CONCRETE PAD  
2 STORY FRAME GARAGE



SURVEYED BY:  
*[Signature]*  
JEFFREY I. LEE  
PROFESSIONAL SURVEYOR 6359  
SEPTEMBER 25, 2000

COPYRIGHT 2000 BY:  
LEE SURVEYING & MAPPING CO., INC.  
117 North Madriver Street  
BELLEFONTAINE, OHIO 43311  
(937) 593-7335

2 WORKING DAYS  
**BEFORE YOU DIG**  
CALL TOLL FREE **800-362-2764**  
OHIO UTILITIES PROTECTION SERVICE.

6764 2P