

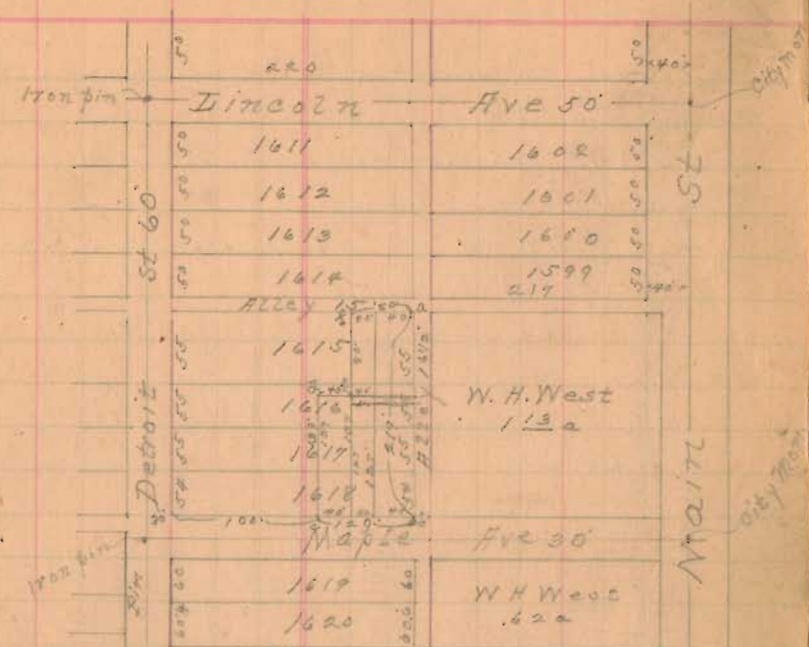
STATION. ALIGNMENT. DEPLETION. REMARKS.

- (1) Start at iron pin cent Maple Ave & Detroit St. Flag at
N.W. cor Maple & Main St
Thence East on center Maple Ave.
at 125' set a pipe
- (2) Start at a pipe on center Det St & Alley N. of Maple
Thence on alley line East 125'
- (3) Start at a pipe center Maple Ave & 125' on (1)
Thence N. parallel to Detroit St
at 15' set a pipe. N side Maple Ave
154' at stake S. W. of NW cor Conda to Smith
- (4) Start at stake 154' on (3)
Thence East on N line of Smith
at 5' set iron pin 1" x 24" at N.W. cor Conda to Smith tract 40' x 87'
" 45' " " " " " " " " " 40' x 139'
- (5) Start at 15' on line (3) thence East parallel to center Maple Ave
at 5' set iron pin 1" x 24" at S.W. cor Conda to Smith tract 40' x 139'
" 125' " " " " " " " " " at corner of alley
Parts of lots 1615, 1616, 1617 & 1618 marked, s. e. c. d. e. f. a. being
125' front on Maple Ave, 80' on N. alley, 217' on East alley
with offset of 45' at 139' N of N side Maple Ave, belongs
to Conda to Smith

Plat of part of lots (South Add. to 13th Fontaine)
April 8th 1913.

Stationers, St. Louis, Mo.

TOPOGRAPHY. 218



3 c. d. e. f. a. iron pin each place. 1" x 24"

The above plat recorded in Vol. D. page 66
Logan Co. Surveyor Record. Jan 21st 1914.

INDEXED ON MAP 5