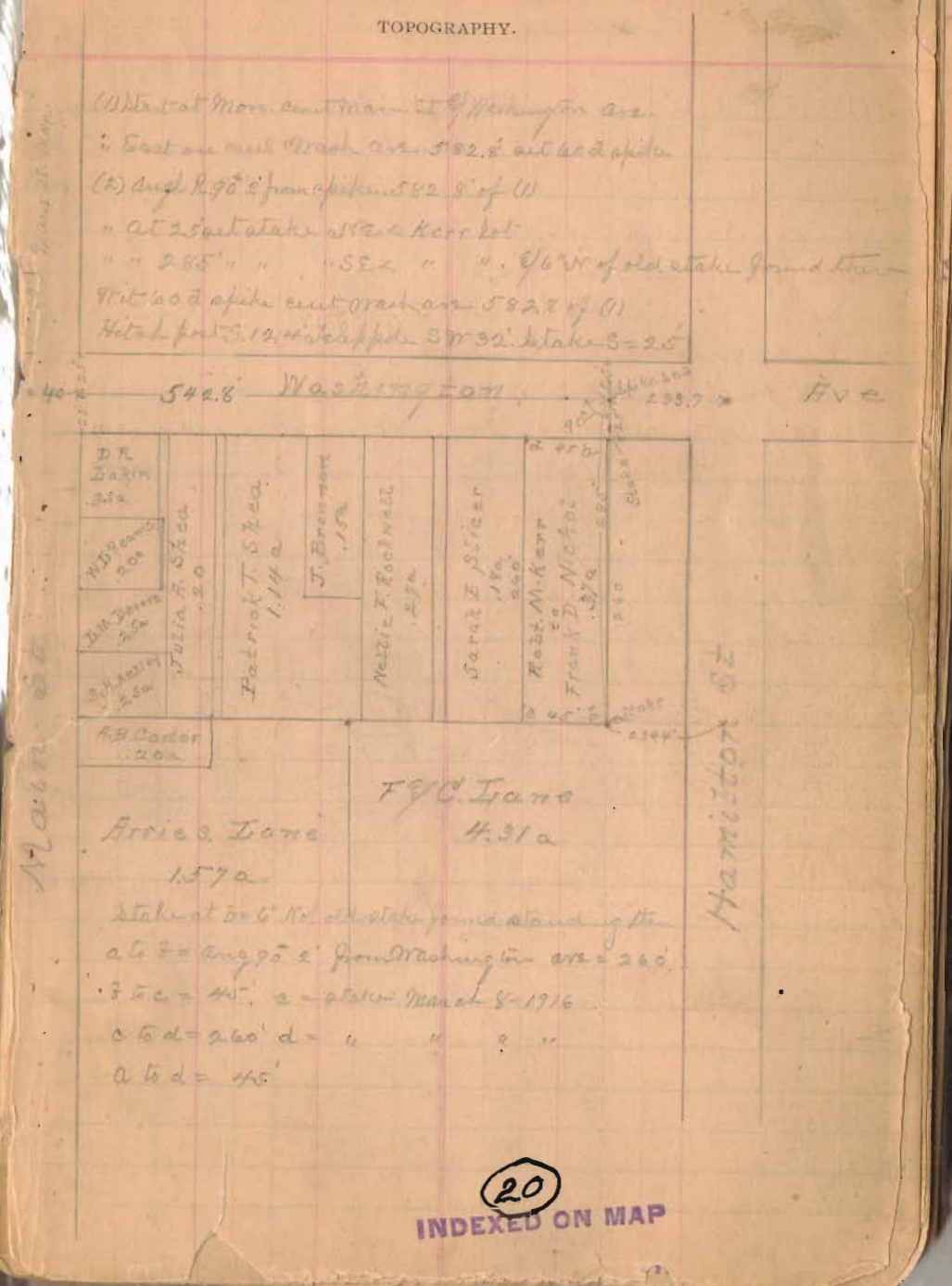


Notes. Harmon Survey continued from page 52.

STATION.	ALIGNMENT.	DEFLECTION.	REMARKS
(6)	Start at iron bolt cut pipe 1004 of (3) = < i		Thence on cut pipe S 42 1/2 W at 402.0' iron pin = < < at 1540' of (5) = R. Rec'd 402.0 p. 29-16
(7)	Start at iron pin cut pipe 402' of (6) = R		Thence following general line Carlisle pipe S 41 W at 1627' center pipe of S. line Harmon = decliner 1110' pass iron pin S 71 1/2 W = 12 a. see (10)
(8)	Start at i-1004 of (3) thence with pipe S 42 1/2 W. 400' to < R		Thence S 40 1/2 W with pipe 192. to iron pin 2-1110' line Harmon 37 a
(9)	Start at i-1004 thence with line Harmon land & iron pin		S 50 1/2 W. at 1230' cross old iron pin 2nd station fence S 42 E line Harmon 12 a & N E line Sam. Harmon at 1649' S E line Harmon land & S E line Sam. Harmon
(10)	Start 2' N of old iron pin 1230 of (9) thence with S line 12 a		N 54 3/4 W. at 400' set dist stake. at 420' set line 12 a at 832' line tree Black Oak 24" dia. S 22 1/2 W line fence at 873' set iron pin S W 41 1/2 in Carlisle pipe 1110 of (7)
(11)	Start at iron pin 2-1004 of (3) thence S along 2 line Harmon		at 322 1/2' set V = middle line 14 sec = fence line S. line
<p>Made Apr 29<sup>th</sup> 1916. Peter Petrick Assn Belchick, Sam Harmon &amp; Frank Harmon present &amp; by mutual consent planted a Boulder 32" x 21" x 14" at place marked by stake Mar 28-16 as begin of (11) S E line Belchick &amp; S W line Sam Harmon          1st set of Oak 32" x 21" x 14" 18 1/2 ft W in June 15-16          2nd set of Oak 32" x 21" x 14" 18 1/2 ft W in June 15-16</p>			

Frank S. Harmon survey Dec 29 - 1916  
 " " " " Mar 8 " "



20  
 INDEXED ON MAP