

Survey for Forest Home May 19-1916

171 ft. Seidel Lot 1844

329 ft. W " " 1845

179 ft. E side lot 1844

321 ft. W " " 1845

R. P. STUDLEY & Co., Manufacturing

STATION. ALIGNMENT. DEFLECTION. REMARKS.

STATION	ALIGNMENT	DEFLECTION	REMARKS
171	SE		
329	W		
179	E		
321	W		

High Ave
 Wit Orig stake / Iron pin
 Center High Ave & Stanley St
 Double Hick 20' x 42' x 36.5'
 Elm 8' NW 1/4 E 42'
 Elm 8' S 60 E - 30.5'
 NW corner of 2 S.E. Pls
 = 55 1/2 E = 70.35
 at cut High Ave & Stanley
 at find old stake and iron
 pin of Aug-1903

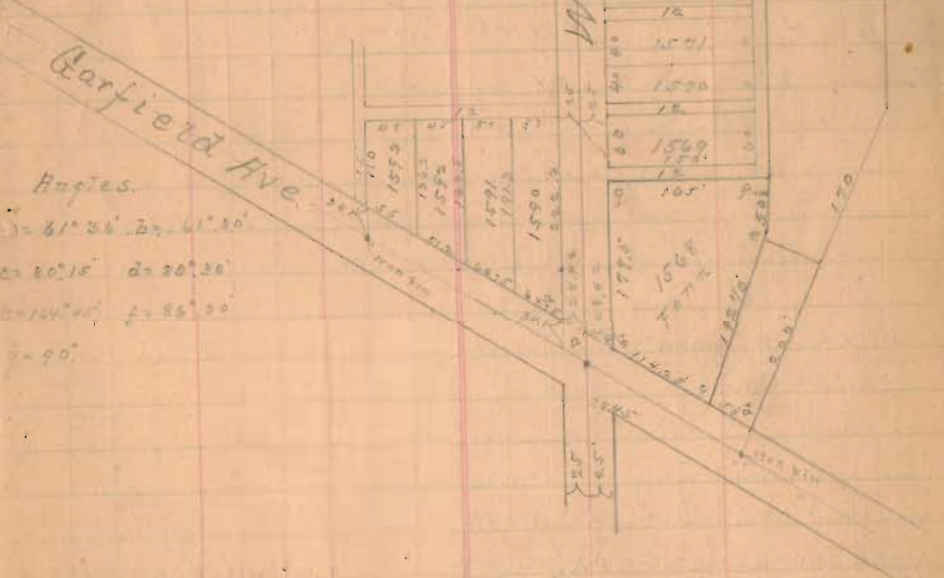
- (1) Start at cut corner of High Ave & Stanley St
 Thence S on High Ave. set 60' spike at 291.9 W line Home
 at 341.9 " " " " E line Home
 " " 375.3 find old 17' Iron pin cut High Ave & Stanley St
- (2) Start at cut line Green St 245.3 S of cut High Ave
 thence across E. on N side of alley
 at 291.9 cross fence etc
 " 341.9 set flag.
- (3) Start at spike 341.9 of (1) thence S. on E line Home
 at 25' set V-N 2 Home. 245.46 set V-S 2 Home
- (4) Measure across 50' on N side of alley. Set T S W 2 Home at corner fence
- (5) " " 50' on Seidel High Ave from 25' of (3) - NW 2 Home

33 INDEXED ON MAP

Surveyed for Mr. Garfield Place add.
 For Mr. Fern May 4th 1916

TOPOGRAPHY.

Found old stake at S W 2 1568 and put over
 " stake in old hole. also found old stake at NE 2
 1568 and let it stand
 The south east corner on Garfield
 Ave is on top of concrete spandrel
 wall of culvert under Garfield
 set our stakes at S W 2 1568
 and also at East corner of
 all measurements at these on
 plat



Angles.
 1 = 61° 36' 20" 41' 30"
 2 = 20° 10' 20" 20' 20"
 3 = 101° 00' 20" 86° 30"
 4 = 90°

34 INDEXED ON MAP