

Survey for Forest Home May 19-1916

171 ft. Seidel Lot 1844

329 ft. W " " 1845

179 ft. E side lot 1844

321 ft. W " " 1845

R. P. STUDLEY & Co., Manufacturing

STATION. ALIGNMENT. DEFLECTION. REMARKS.

STATION	ALIGNMENT	DEFLECTION	REMARKS
171	SE		
329	W		
179	E		
321	W		

High Ave  
 Wit Orig stake / Iron pin  
 Center High Ave & Stanley St  
 Double Hick 20' x 44' x 36.5'  
 Elm 8' NW 1/4 E 142  
 Elm 8' S 60 E - 30.5'  
 NW corner of 2 S.E. Pls  
 = 55 1/2 E = 70.35  
 at cut High Ave & Stanley  
 at find old stake and iron  
 pin of Aug-1903

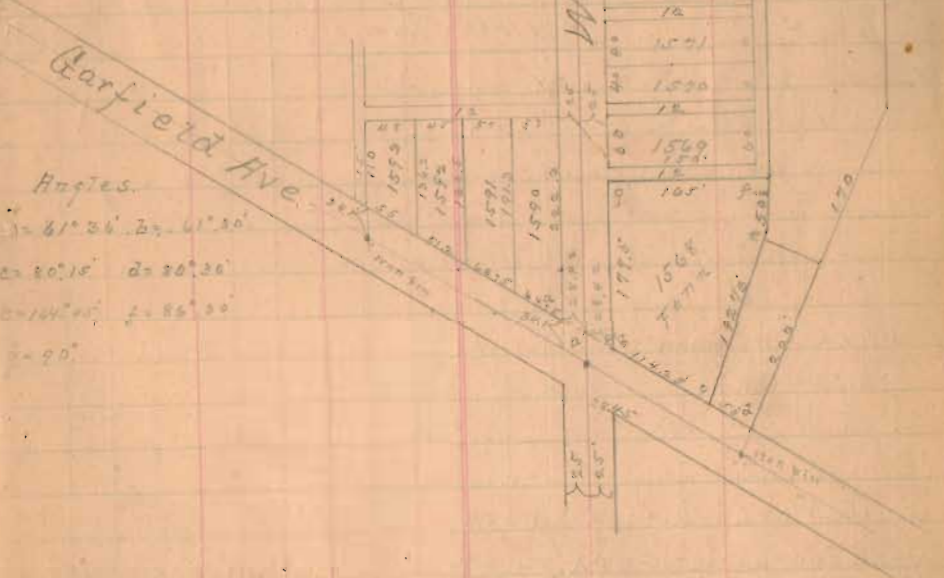
- (1) Start at cut corner of High Ave & Iron pin  
 Thence S on High Ave. set 60' spike at 291.9 W line Home  
 at 341.9 " " " " E line Home  
 " " 375.3 find old 17' Iron pin cut High Ave & Stanley St
- (2) Start at cut line Green St 245.3 S of cut High Ave  
 thence over E on N side of alley  
 at 291.9 over fence etc  
 " 341.9 set flag.
- (3) Start at spike 341.9 of (1) thence S on E line Home  
 at 25' set V-N 2 Home 245.46 set V-S 2 Home
- (4) Measure over 50' on N side alley. Set T S W 2 Home at corner fence
- (5) " " 50' on Seidel High Ave from 25' of (3) - NW 2 Home

33 INDEXED ON MAP

Surveyed for St. Garfield Place add.  
 For Mr. Fern May 4<sup>th</sup> 1916

TOPOGRAPHY.

Found old stake at S W 2 1568 and put over  
 " stake in old hole. also found old stake at NE 1  
 1568 and let it stand  
 The south east corner on Garfield  
 Ave is on top of concrete spandrel  
 wall of culvert under Garfield  
 set our stakes at S W 2 1568  
 and also at East corner of  
 all measurements at these on  
 plat



Angles.  
 = 61° 36' 20" W 117.30'  
 = 20° 10' 20" W 20.20'  
 = 101° 00' 00" S 86.30'  
 = 90°

34 INDEXED ON MAP