

Howell-Hoffman Survey Nov. 12th 1913
 Survey No. 5245

R. P. STUDLEY & Co., Manufacturing

STATION.	ALIGNMENT.	DEFLECTION.	REMARKS.
John Hoffman heirs to Sam Jones	680	see below	

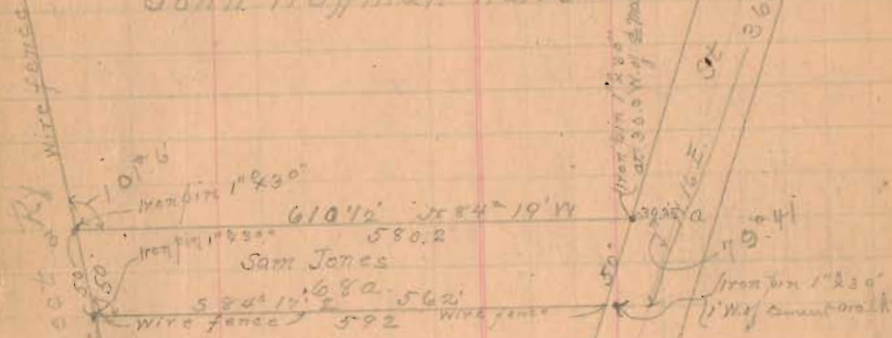
(47)

INDEXED ON MAP

Corporation line



John Hoffman Heirs



Reid L. Huber

Start line in at a Sugar 15° NW 1.9'

Edwin 20" S = 14.1'

Measure NW angle Sam Jones = 99° 47' = a 2: 28' 54"

(1) Start at 2 man at a Mon N line Sam Jones

at 30.3 line from 1° 23'

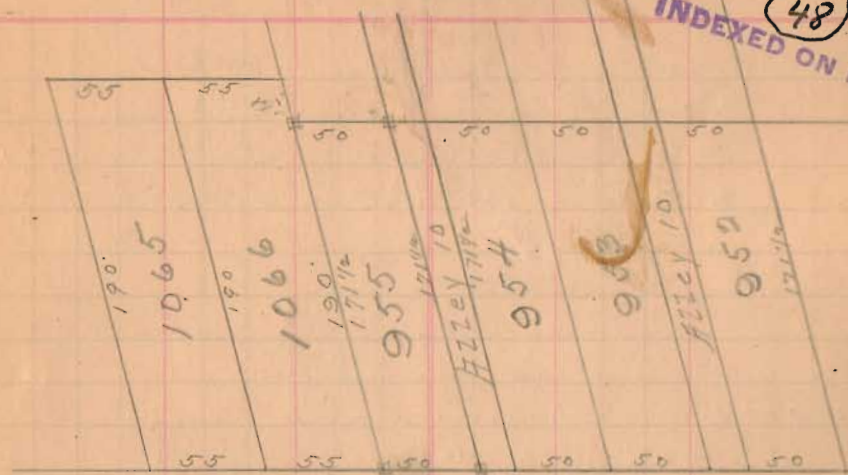
610 1/2 line from 1° 23' at Old label by Jones = 3

(2) Start at Mon Cor line on 2 man 6 line S on 2 man

at 361.8 line Huber and John Hoffman now Sam Jones

TOPOGRAPHY.

INDEXED ON MAP (48)



Cooper Ave 30'

Iron pin

O'Connor allotments page 112

Johns Drive

FISHER SURVEY

N. LINE LOT 1064

Arburn ^{2d} of Ludlow

Iron Bar

Hydrant N.W. 27.30'

S.W. Cor. Stone foundation of house

N.E. 63.56'

Iron Lamp post S.E. 27.40'

N.E. Cor. house S.W. 63.35'

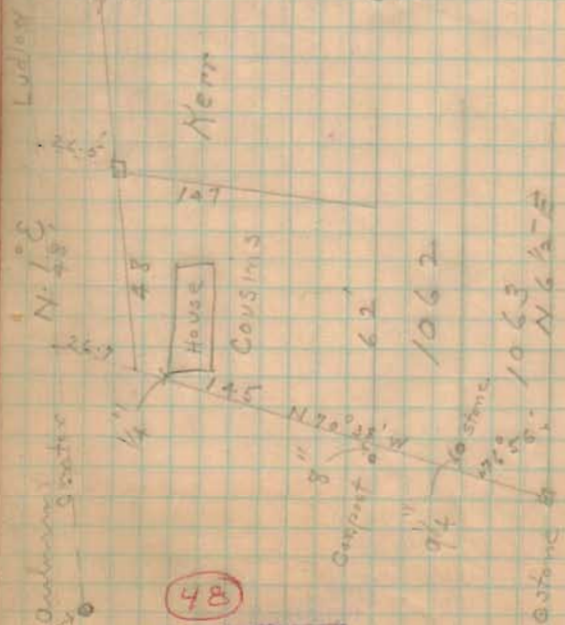
Eastern ^{2d} of Ludlow

Iron Bar

Lamp post N. 33.3'

Maple S.E. 54.4'

Maple S.W. 32'



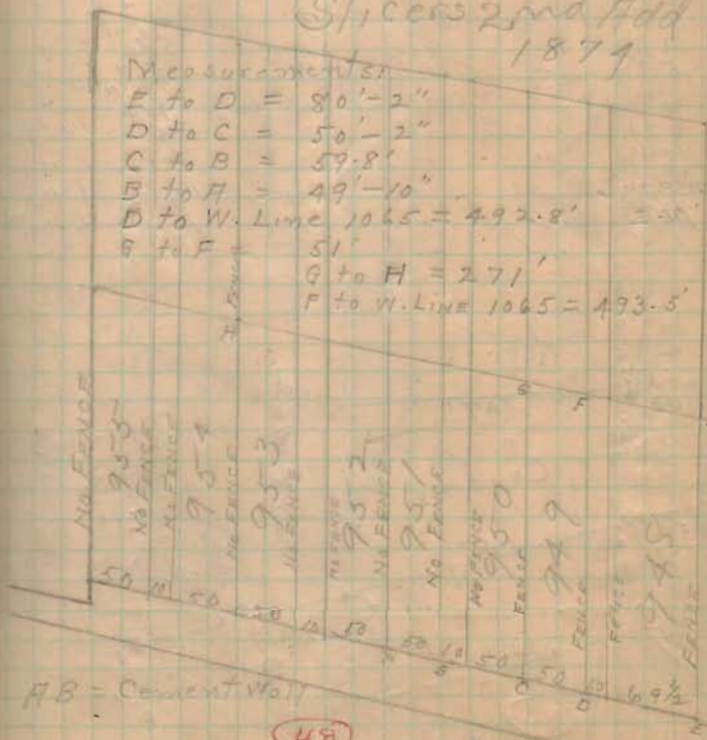
INDEXED ON MAP

Found intersection of
utilities at \odot only street
Ludlow .8 1/2' E. of sewer
manhole cast iron frame.

Found iron bar \odot Ludlow
and Eastern Ave.

Ran line N. 1° E

Slices 2nd Add
1879



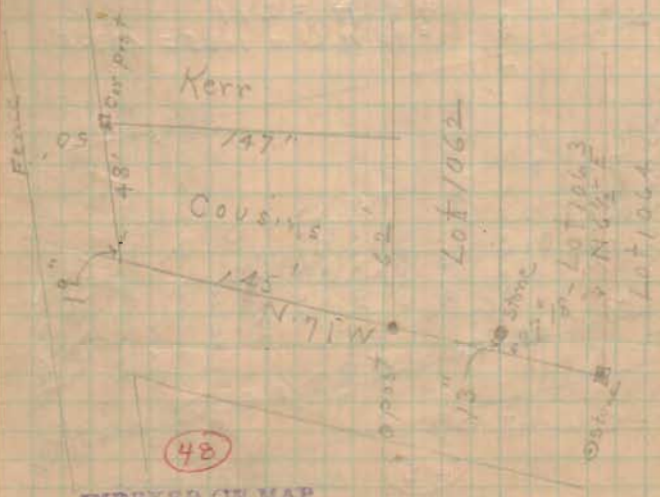
INDEXED ON MAP

Lot 1063 (Roof) meas.
57.8 feet from Sidders
Corner post to S shed (Sidders)

W. LINE Lot 1064

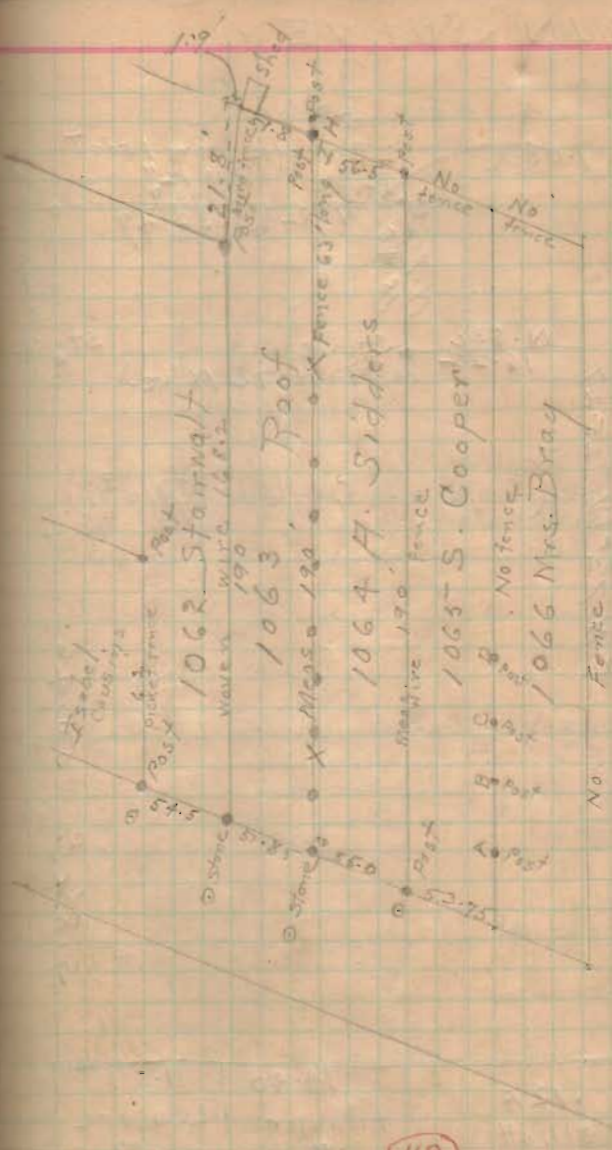
Ran 12" offset line along stone
at front to post at local
dist from offset line to corner "

1st post from sidewalk	7 1/2"	(New)
2nd "	7 "	"
3rd "	6 "	"
4th "	5 1/4"	"
5th "	5 "	"
6th "	4 1/4"	"
7th "	9 "	(old)
8th "	7 1/2"	6"
9th "	12 1/2"	6"
10th "	12 "	11"



(48)

INDEXED ON MAP



(48)

INDEXED ON MAP