

Howell-Hoffman Survey Nov. 12<sup>th</sup> 1913  
 Survey No. 5245

R. P. STUDLEY & Co., Manufacturing

STATION.	ALIGNMENT.	DEFLECTION.	REMARKS.
John Hoffman heirs to Sam Jones	680	see below	

(47)

INDEXED ON MAP

Corporation line

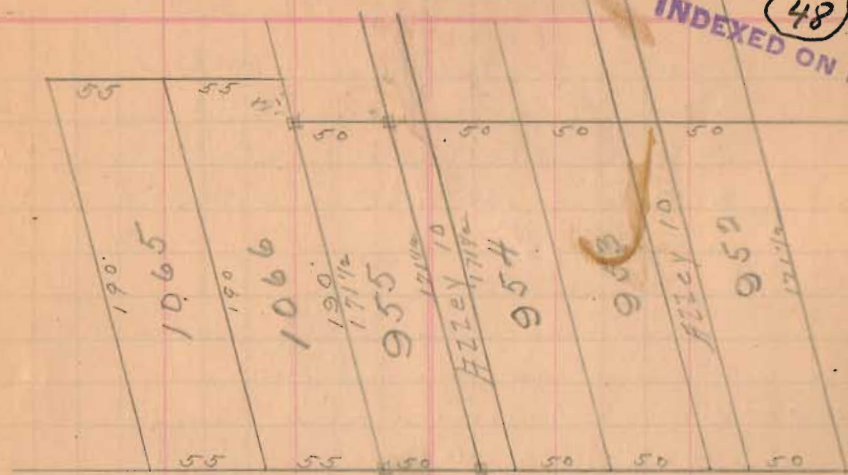
John Hoffman Heirs

Reid L. Huber

Start from pin at a Sugar 15" NW 1.9'  
 E. line 20" S = 14.1'  
 Meas NW angle Sam Jones = 99° 47' = a      b: 28° 54'  
 (1) Start at 2 man at a Mon N line Sam Jones  
 at 30.3 line from 1° 30'  
 6.10 1/2 line from 1° 30' at Old label by Jones = 3  
 (2) Start at Mon Cor line on 2 man 6 line S on 2 man  
 at 361.8 line Huber and John Hoffman now Sam Jones

TOPOGRAPHY.

INDEXED ON MAP (48)



Cooper Ave 30'

Iron pin

O'Connor allotments page 112

Johns Drive

F.B. 492

101

TOPOGRAPHY.

INDEXED ON MAP  
48



Cooper Ave 30'

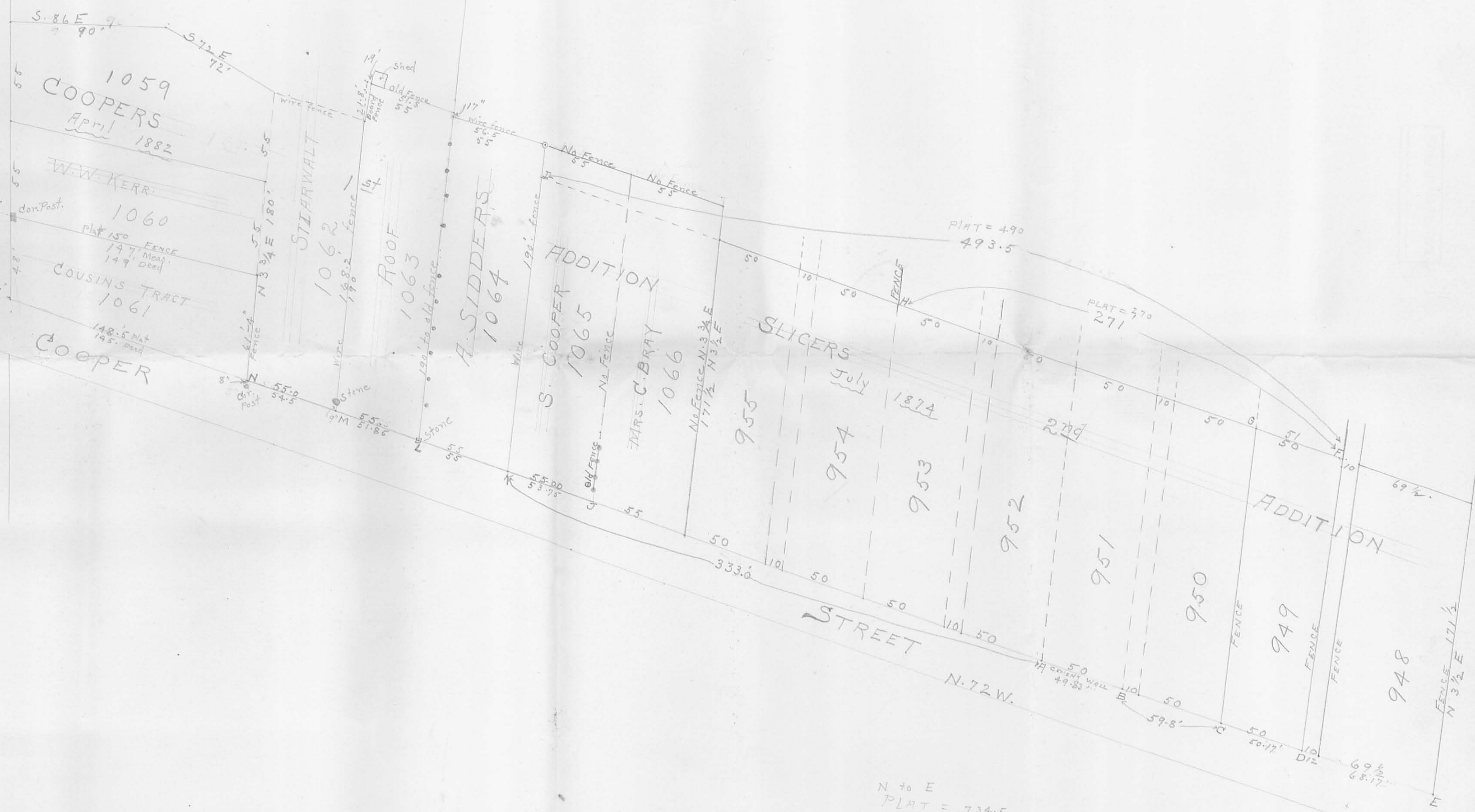
Iron pin

Common Allotments. page 112.

James D. Smith

INDEXED ON MAP  
48 1P

CENTER LINE OF LUDLOW STREET



N to E  
 PLAT = 734.5  
 Meas. = 734.32

INDEXED ON MAP  
 48 2P

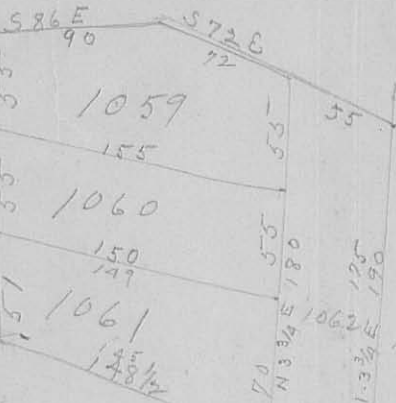
BAIN'S LOT

4/20, 1882

INDEXED ON MAP  
48 3P

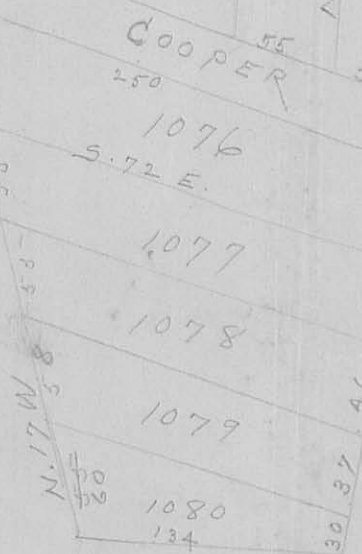
Wide

N. 2 1/2 W.

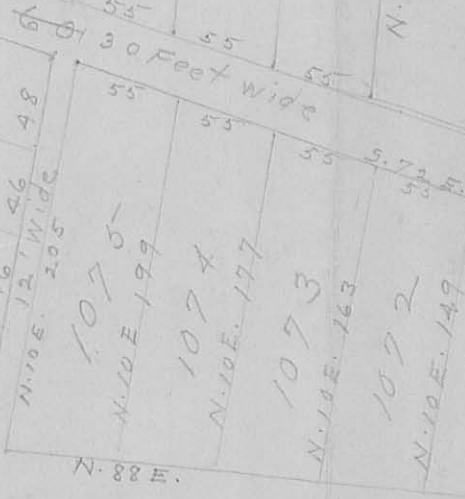


COOPER

60 Feet



STREET



10 y 1067

98 5.17 E

(SEE SURVEY 1177)

Chandler - Pearce Survey  
Lot. 947 & Land Eastern Ave.

Tract (A)

Lockwood (Gosham Church)

TO

Marguis Vol. 134-381 10/10/1927

Begin Point S. side of Eastern

75' E. of N. E. cor lot. 947

S. 160'

E. Parallel to st. 50'

N. 190' to Eastern

W. 50'

Tract (B)

Koons To Marguis

Vol. 131-158 12/11/1925

Begin N.E. cor lot. 947

S. 165.5'

E. Parallel to Eastern 33'

N. 190' to Eastern

Tract (C)

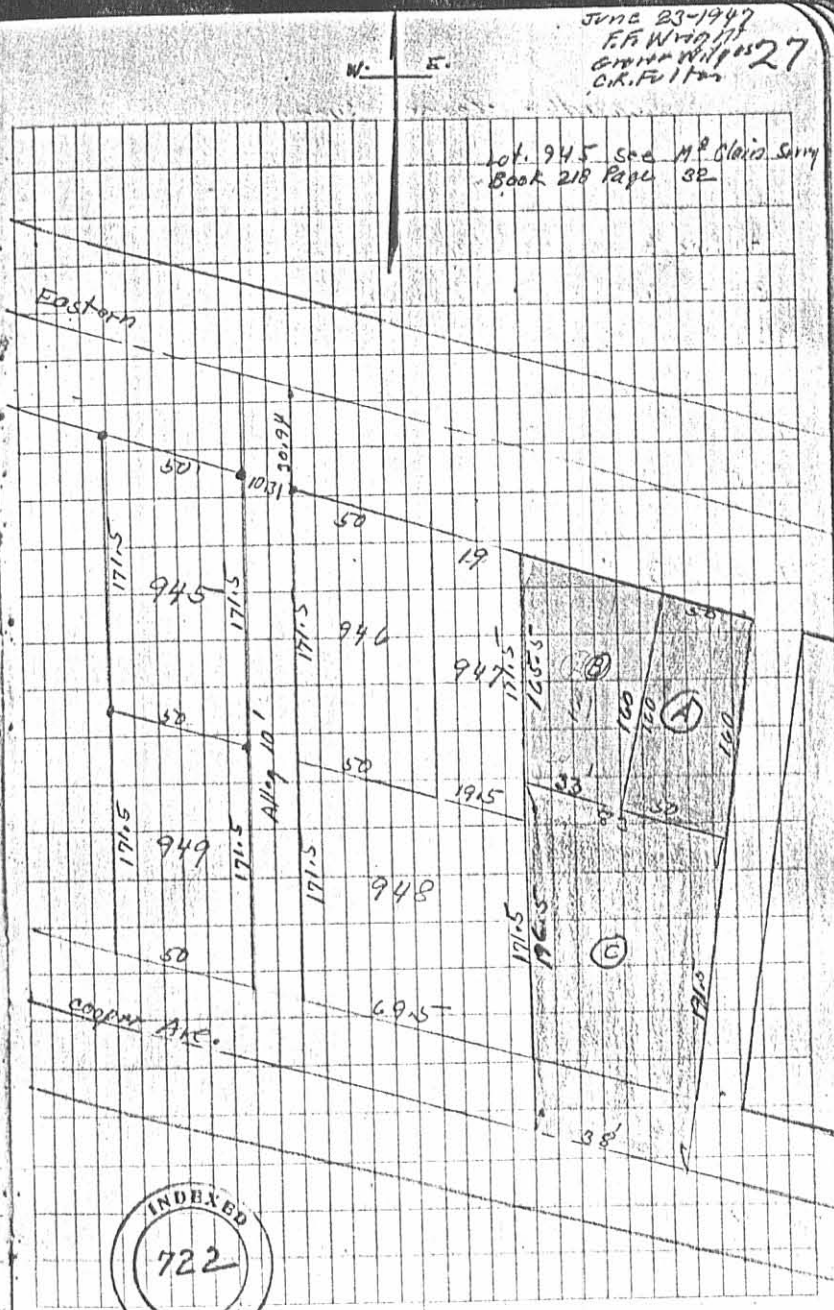
Harry To Neal Vol. 170-478 12/31/1941

Marguis To Sharp (Near Pearce) Vol. 149-210 2/15/32

165 along E. side Lot. 947 E. 20'  
N 160' W - 30'

JUNE 23-1947  
F. B. W. 119 111  
C. K. F. 111  
27

Lot. 945 see M. P. Clark Survey  
Book 218 Page 32



INDEXED  
722

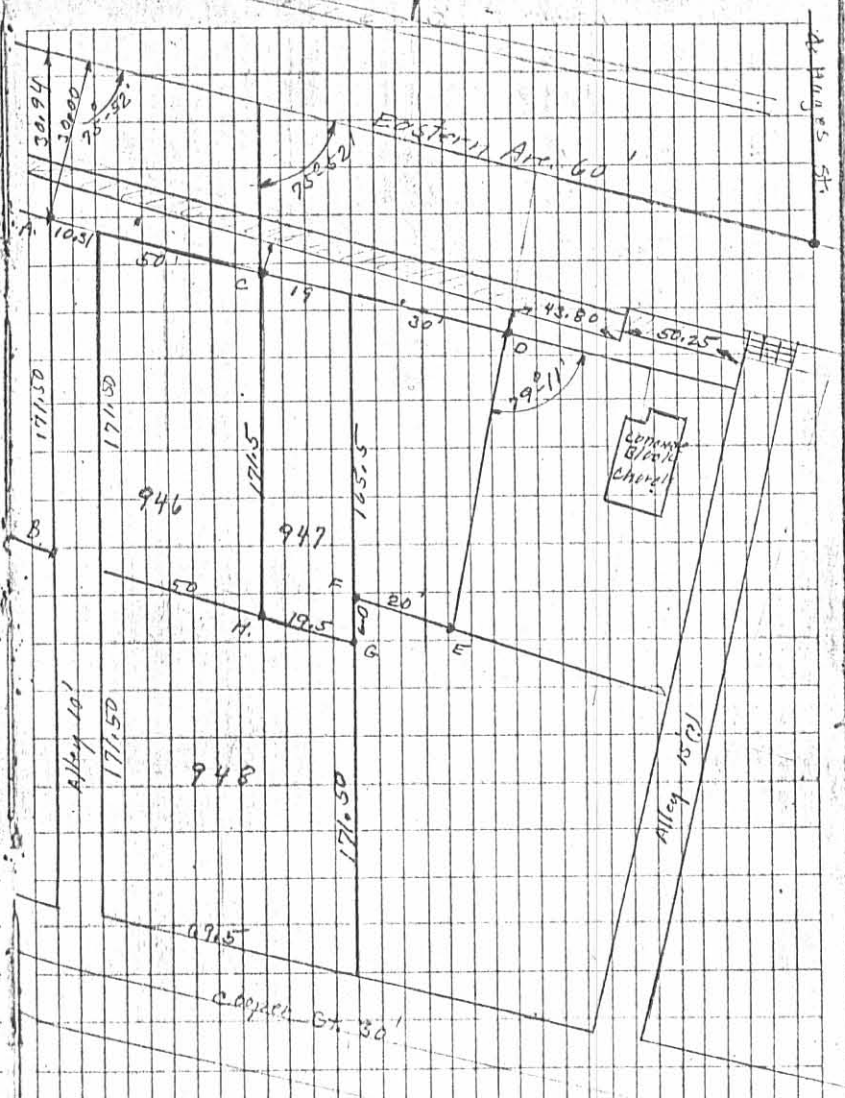
(over)

INDEXED ON MAP  
48 4-1

Chandler - Pearce Survey

- A. Pipe found Book 218 Page 32
- B. " " " " " "
- C. Pipe placed.
- D. " "
- E. " "
- F. " "
- G. " "
- H. " "

W. E. 6-23-47 28



INDEXED ON MAP  
4B 4P-2

INDEXED  
722

CITY BOOK No. 218

Copied from County Engineers Survey Book 493 Page 13  
County Index (B05)

McClain Survey  
Lot 945 Eastern Ave

Lots as shown on Plat Book  
171'-6" X 50' except 948 which  
is 171'-6" X 69' 1/2 and Lot 947 which is  
171'-6" X 19'  
Alleys 10'  
Streets Addition New Page 14  
of Plat Book

- A Hubs by Mitchell See City Record
- B " " " " " "
- C " " " " " "
- D " " " " " "
- E " " " " " "
- F " " " " " "

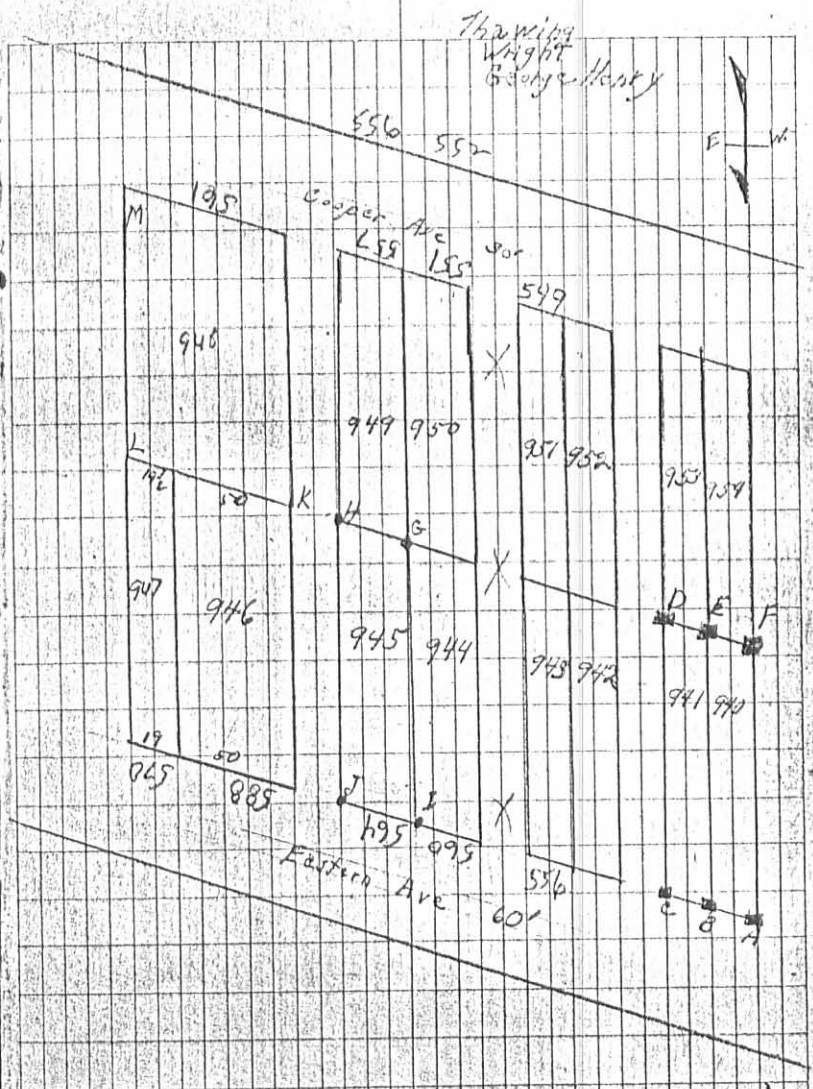
All these hubs found

G	1 1/2"	Pipe	Placed	By	Wright
H	1/2"	Iron	"	"	"
I	1/2"	"	"	"	"
J	1/2"	Pipe	"	"	"

See Galloway survey Book 283 Page 10

Feb. 16, 1927

32



See Drawing Wright George Hasty



10/1/27  
10/27

A.M.W.

INDEXED ON MAP  
48 5P

CITY OF BR 218

Shawver Survey

Lot 743 Eastern Ave

A-B-C-D-E-F-G

H-I-J Same as M<sup>rs</sup> Clain

Survey Page 32 Allfund

April 5-1930

U Hub Placed

V " "

W 1" Square Iron 30" Long

X Hub Placed

Y " "

Z 3/4" Round Iron Placed

Lots on plat Book 171-6" x 50'

Alleys 10'

Set on e sighted on T

measured 10' set U Then 50' set

V Then 50' set W

Set on D sighted on G

Measured 10' set X Then 50' set Y

Then 50' set Z

Apple Tree and wild cherry on

lot 943 like yz 1'-9" south of

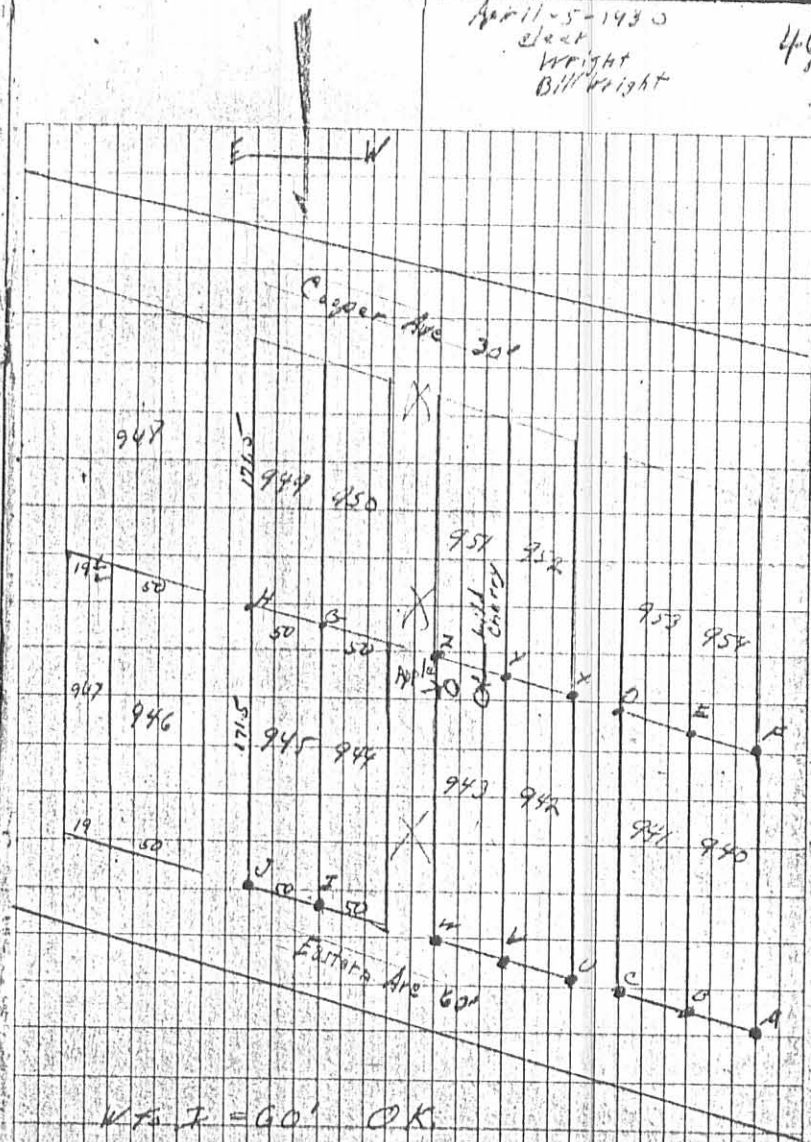
south side of wild cherry

ZW measured 171'-6" O.K.

Copied from County Engineer Book 283 Page 52 (1930)

April 5-1930  
elect  
Wright  
Bill Wright

46



W to Z = 60' O.K.

See page 32, this Book  
see Gallivan survey  
Book 283 Page 10



INDEXED ON MAP  
48 6P



Purkey - Reynolds Survey  
Eastern Ave.

see survey (364) By Mitchell  
Book 195 Page 114 Aug - 24 1923

see survey (553) By Montgomery  
Book 243 Page 6

see survey (920) BOOK 266 Page 9-10  
for map

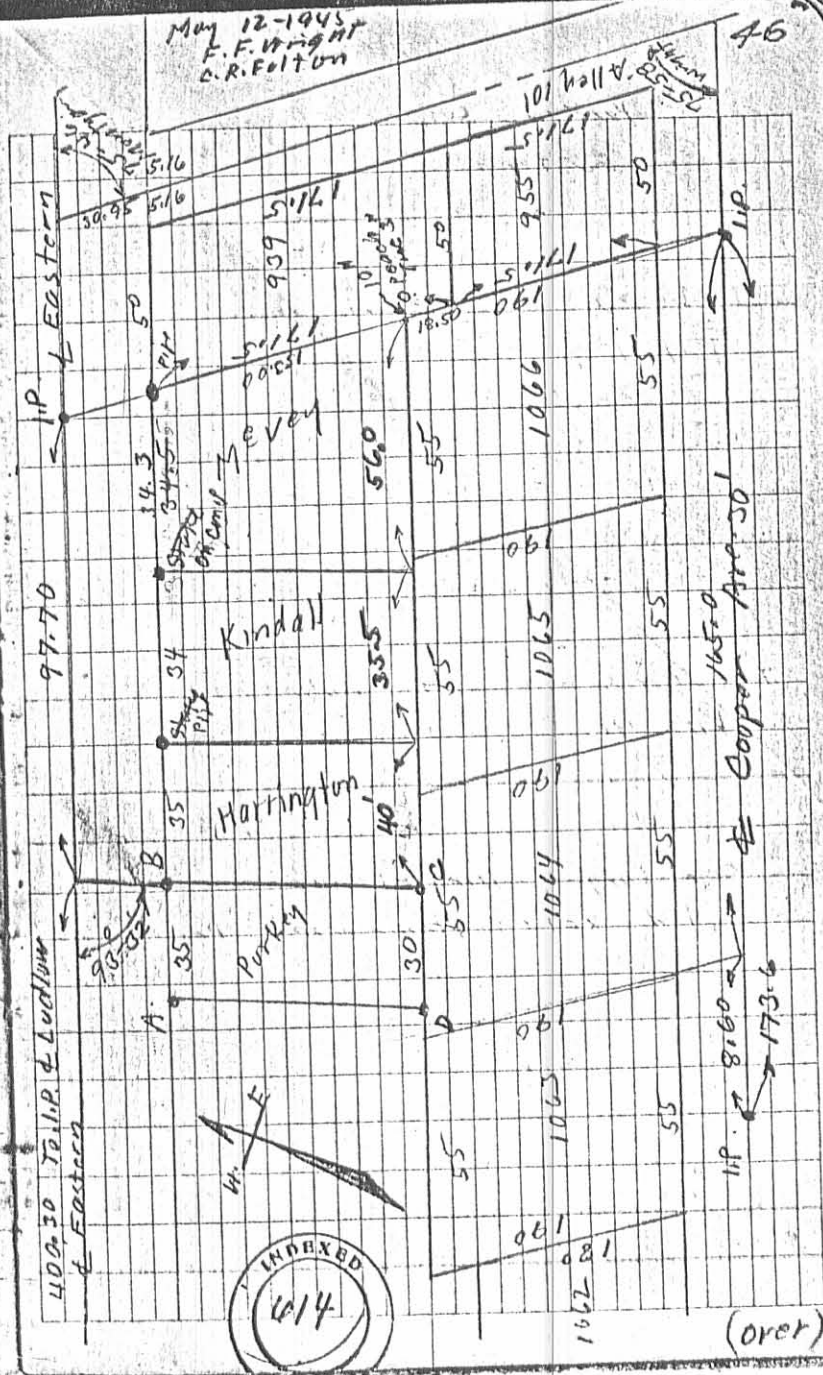
J.E.M. CLARK TO P.H. PURKEY

Vol. 181-251 9-8-1944  
with Eastern East 35'  
South Parallel with Rush Lot 155'  
Parallel with Eastern 30'  
North 150'

Distances in red as Used By Wright  
as Distances Used By Montgomery  
To Old Fences. Fenced Now (1945)  
almost entirely gone. Deed distances  
at south end of lots very  
inconsistent. (see Page 47)

- A - Hub Found Placed Pipe
- B " " " "
- C Placed Iron
- D " " " "

INDEXED ON MAP  
48 7P.1



Purkey survey - Reynolds survey  
 Eastern 1st. Aug. 29-1955  
 E.F. Wright  
 G.W. Wilgus

Marquis To Harrington  
 Vol. 137 Page 558  
 9-29-28

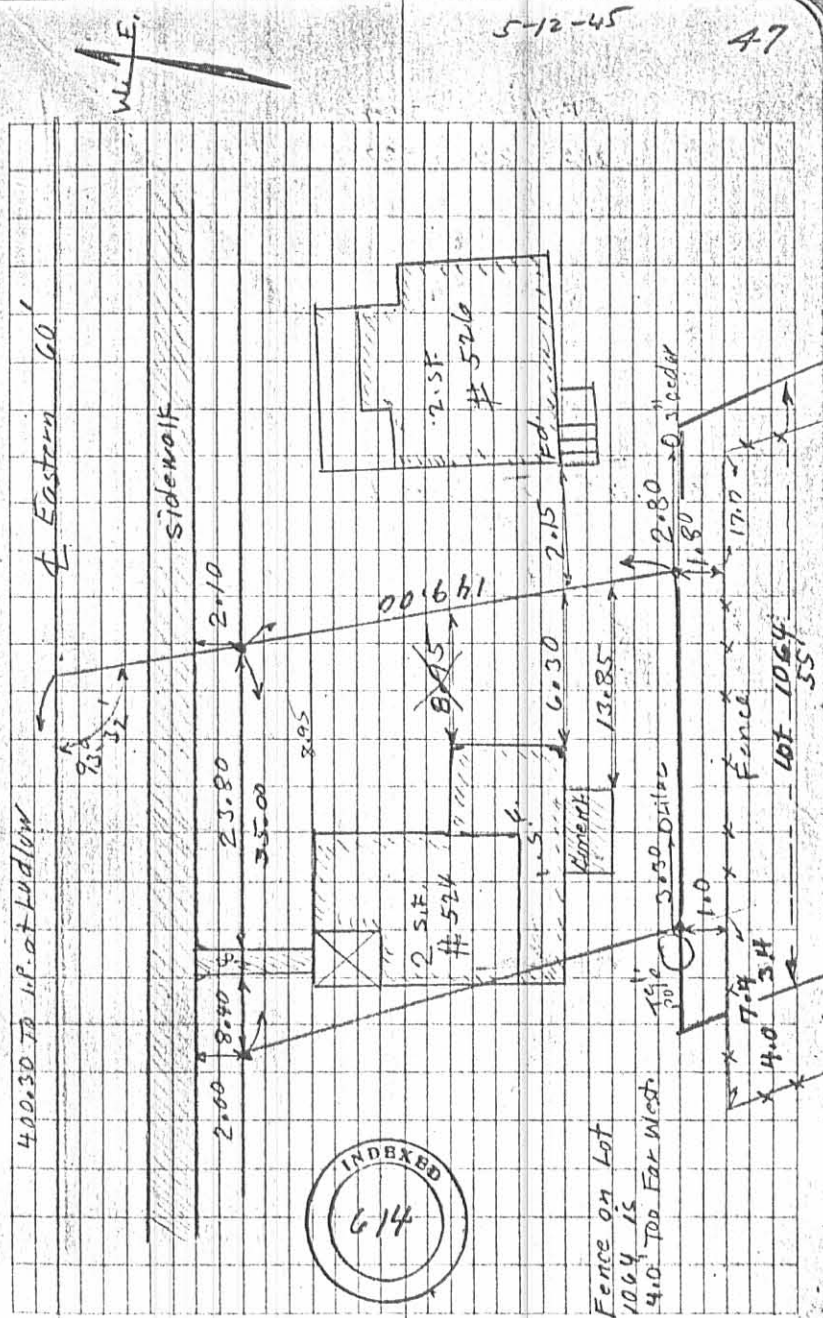
Kindall To Wilgus  
 Vol. 183 Page 313  
 3-19-45

The U.P. Seminary To Johnson  
 Vol. 96 Page 604  
 7-12-1902

See copy of these deeds  
 filed Bellefontaine Deeds Page 7

See Reynolds survey  
 Map 55-614

INDEXED ON MAP  
 48 7P-2



Alloway Survey - Bellefontaine  
Lot 950

April 9, 1953  
Waco  
F.F. Wright  
Grover Wilgus

- C. Placed Pipe
- D. Placed Pipe
- E. Placed Pipe
- F. Found Pipe = G. Book 218 Page 32
- G. Found Iron = Z. Book 218 Page 44
- H. Found Iron = H. Book 218 Page 32
- I. Found Iron = I. Book 218 Page 32
- J. Found Pipe = J. Book 218 Page 32

INDEXED  
931

INDEXED ON MAP  
A.B. SP

INDEXED ON MAP

Sec. 14-11" = 1.0314 x 15 = 15.47

A - Iron  
B - Iron  
A to B City Record 459.3 & Record  
A to B 7-50' lots + 4-10' Alleys + 69.5 = 459.50



CITY Doc FB 198

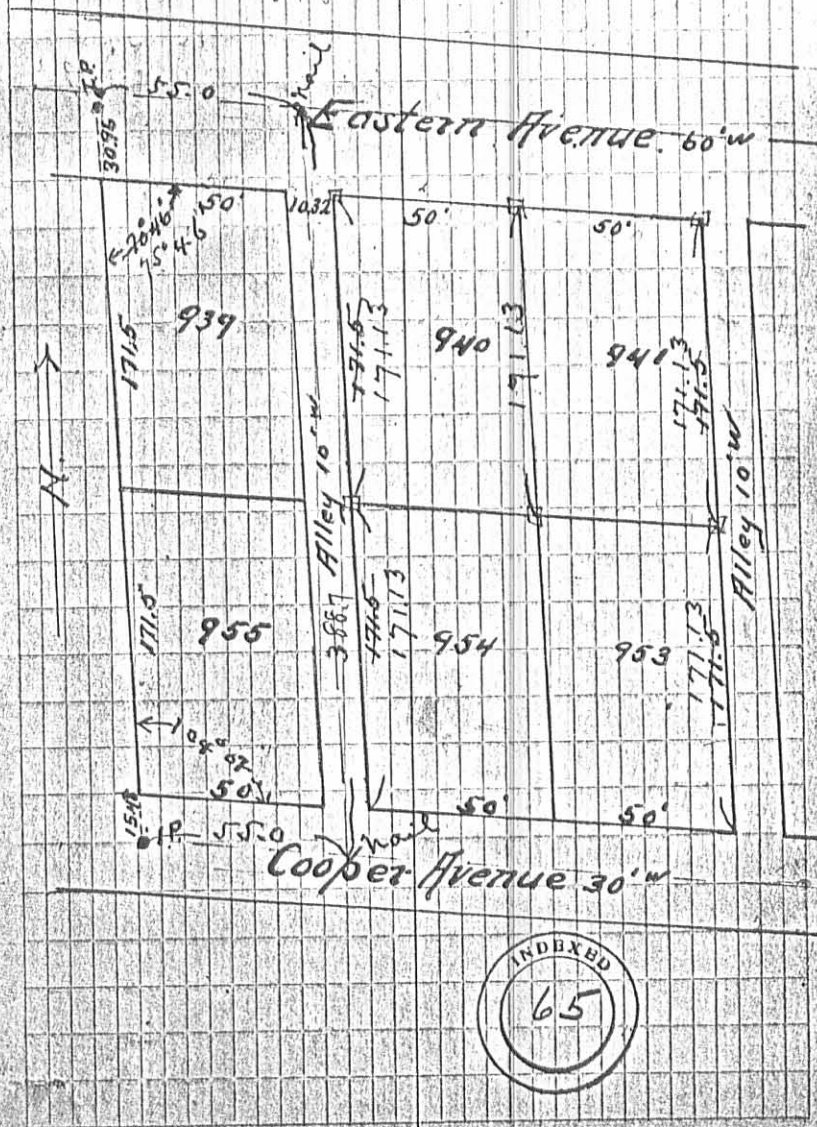
May 17 - 1927

C. R. Fulton (helper)

Lot Survey of Lots 940<sup>941</sup> 941 86

Lot 940 Lelia Corwin

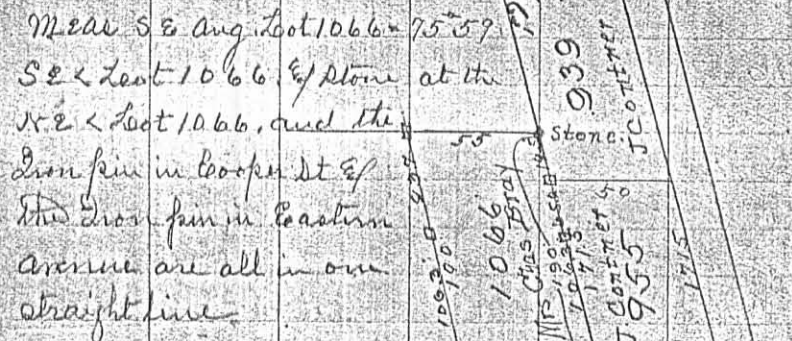
Lot 941 Kirby<sup>941</sup> Chloe Contner



INDEXED ON MAP  
18 9P

J. Conner Survey Lot 1066 June 15-1920  
 Herschel Buchanan  
 John Dickinson Johnson Note 13 - Laska

Eastern Ave



Cooper St

- (1) Start at spike & Cooper 12 E of line pin W line Lot 955  
 Aug N 75° 59' to line parallel with E line Lot 955  
 at 15.5 set O on line Cooper at 183.8 set O at 183.8
- (2) Start at 183.8 of (1) Aug N 75° 59'  
 at 10' set O at 10' set O
- (3) Start at 67.0 of (2) Aug N 75° 59' to lot line  
 at 21.7 set O N E Lot 1066
- (4) Start at 12 of (2) Aug N 75° 59' on W line Lot 1066  
 at 21.7 find old < stone = N E < Lot 1066  
 Meas from O 12 E of S E < Lot 1066 N 106.8 to O  
 Start at O 10 p. 3 of (1) Aug N 75° 59'  
 at 12' set O on E line Lot 1066  
 " 67 " O " W " " "

Garfield Ave. Cross Section. June 19-1920. 29  
 From blm. Div Big Ry W to Sandusky Ave.

Sta.	Left	South	Right	North	Remarks
0	4 1/4"	2 1/2"	0	2"	4 1/4" Mud 1" deep
0+5	4 3/4"	2 1/2"	3/4"	5"	" 1"
1	5"	3 1/2"	5"	4"	" 2 1/2"
1+50	5"	4"	3"	4 3/4"	" 3"
2	6"	3 1/2"	4"	3 1/4"	" 3 1/2"
2+50	6"	4"	3 1/2"	5 1/2"	" 4"
3	6"	2"	5"	4"	" 4"
3+50	6"	3"	3"	3'	" 3"
4	5"	2 1/4"	1"	1 1/2"	" 3"
4+50	5"	5"	4 1/2"	3"	5 1/2" Mud 3" deep
4+76					Pratt St
5	5"	2"	2"	2 1/4"	5"
5+50	4"	4 1/4"	4"	3 1/2"	4 1/4"
6	5"	3 1/4"	3"	4"	5 1/2"
6+50	5 1/2"	5 1/2"	4"	5"	5 1/2"
7	4 3/4"	6"	5 1/2"	6"	4 3/4"
7+50	5"	8"	6"	7 1/2"	3 1/2"
8	5"	9"	5"	5"	5 1/4"
8+50					end of curb N. side Garfield
8+70	5"	2 1/2"	5 3/4"	5 1/2"	7"
9	5"	0	3"	6"	5 1/2"
9+50					4"
10					" 4"

INDEXED ON MAP  
48 10P

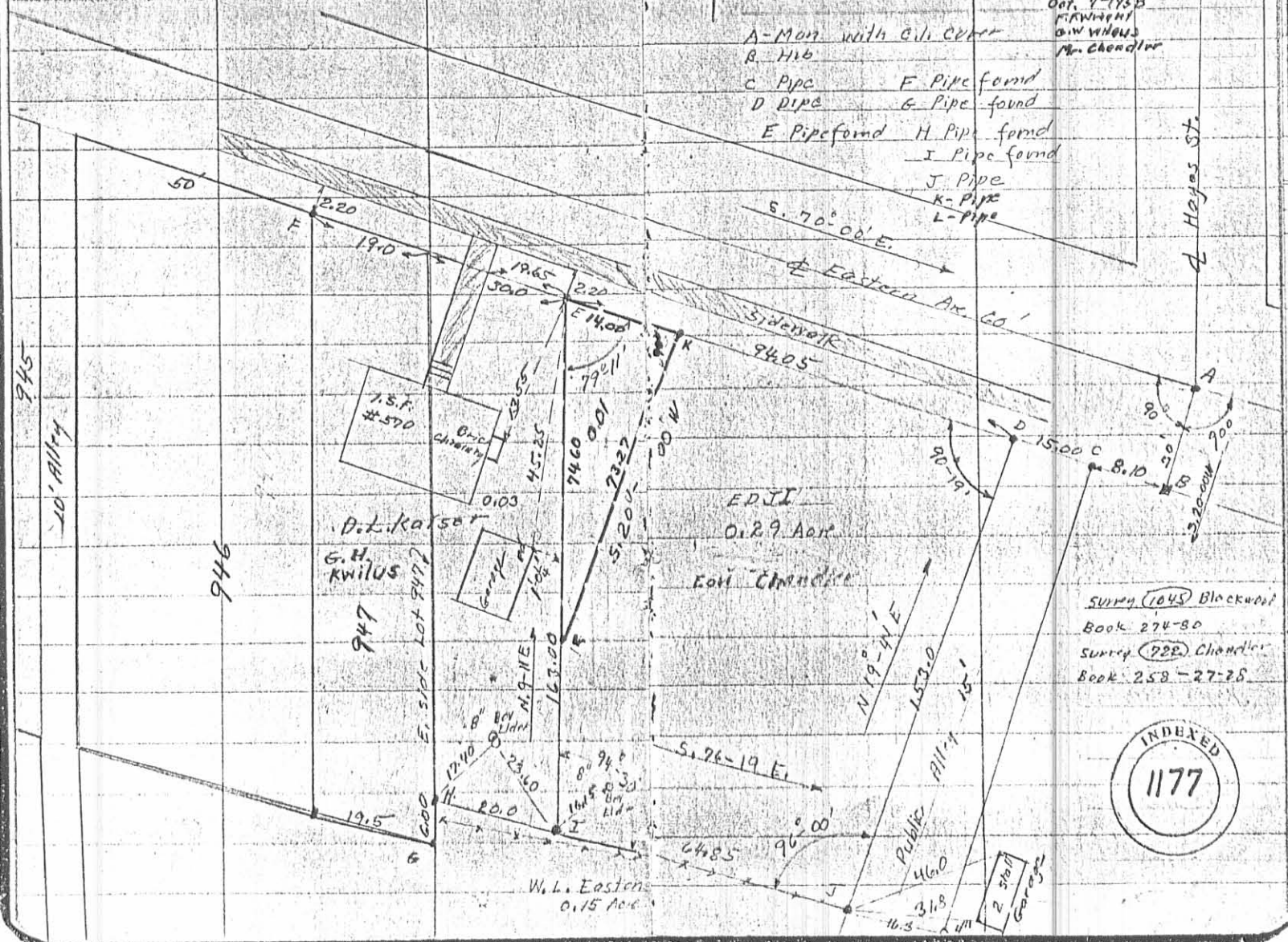
Chandler Surrey  
 Bellefontaine V.M.S. 4990  
 Eastern Ave.

June 6, 1958 8  
 Clear  
 F.F. Wright  
 G.M. Wilgus

Luckwood (Church)  
 To Marquis Vol. 134 - 381 10/10/22  
 (Very Poor Description)

Oct. 7-1958  
 F.F. Wright  
 G.M. Wilgus  
 Mr. Chandler

- A - Man with Cili cutter
- B - H16
- C - Pipe
- D - Pipe
- E - Pipe found
- F - Pipe found
- G - Pipe found
- H - Pipe found
- I - Pipe found
- J - Pipe
- K - Pipe
- L - Pipe



INDEXED ON MAP  
 48 11P

SURRY (1045) Blackwell  
 Book 274-80  
 SURRY (722) Chandler  
 Book 258-27-28



C.M. Richey #1

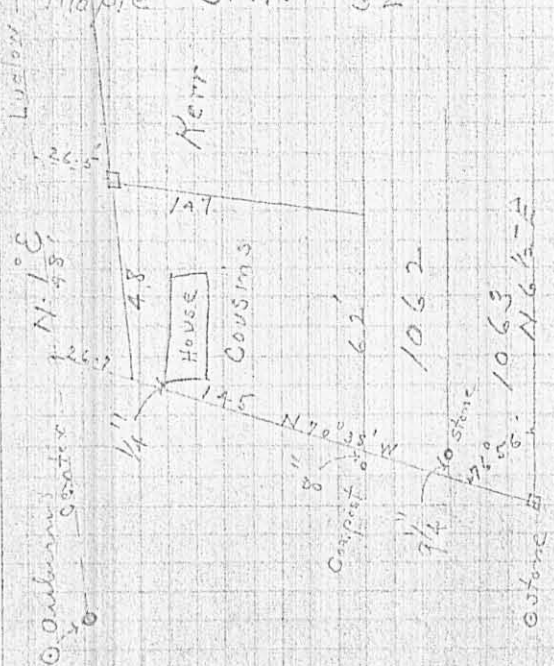
128

FISHER SURVEY

W. LINE LOT 1064

Auburn and Ludlow  
 Iron Bar  
 Hy grant N.W. 37.30'  
 S.W. Cor. stone foundation of house  
 N.E. 68.56'  
 Iron Lamp post S.E. 27.40'  
 N.E. Cor. house S.W. 63.35'

Eastern and Ludlow  
 Iron Bar  
 Lamp post N. 23.3'  
 Maple S.E. 54.4'  
 Maple S.W. 32'



129

Found intersection of  
 Auburn and Ludlow  
 8 1/2" E. of sewer  
 manhole east end frame.

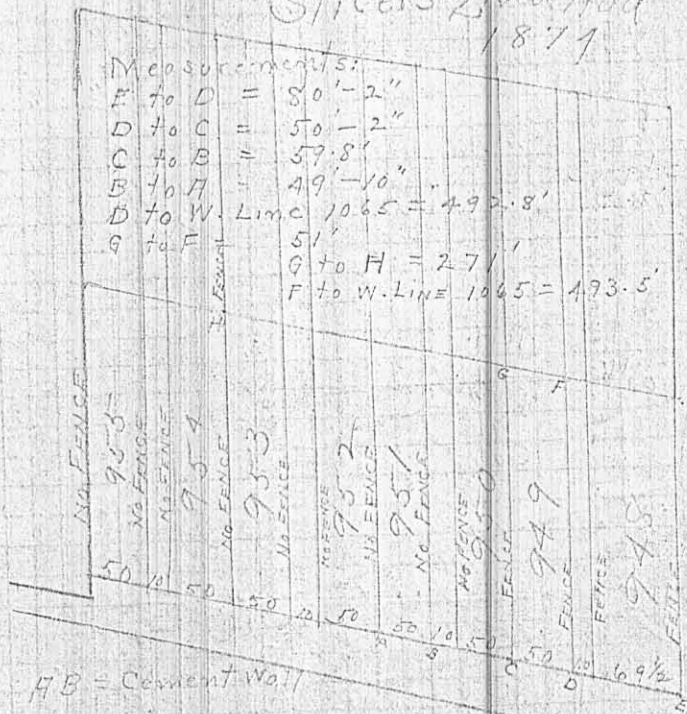
Found iron bar @ Ludlow  
 and Eastern Ave.

Ran Line N. 1° E

Slicers 2nd Add  
 1877

Measurements:

E to D = 80'-2"  
 D to C = 50'-2"  
 C to B = 57.8'  
 B to A = 49'-10"  
 D to W. Line 1065 = 492.8'  
 A to F = 51'  
 G to H = 271'  
 F to W. LINE 1065 = 493.5'



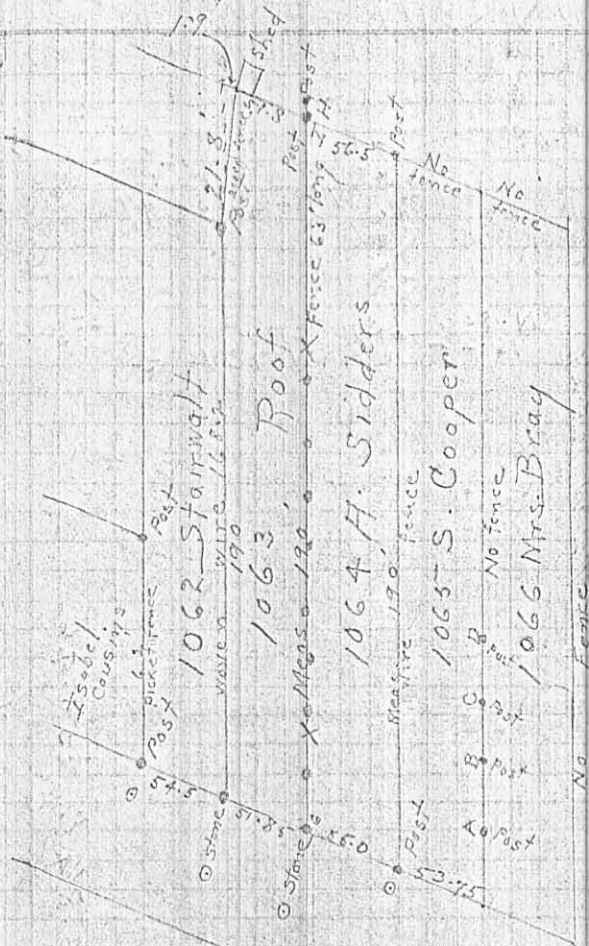
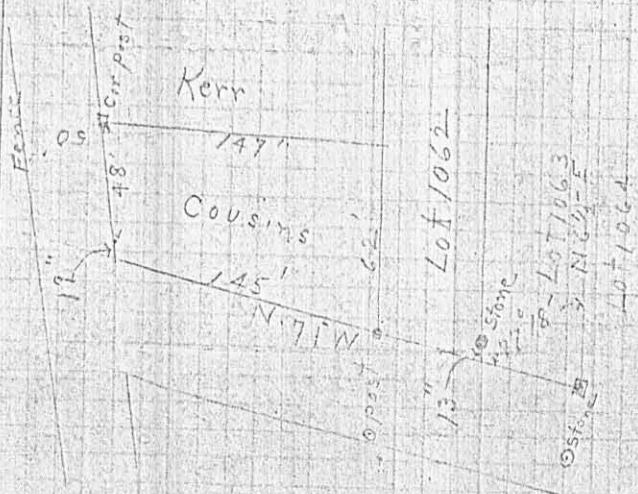
HB = Cement Wall

INDEX ON MAP  
 48 12P-1

Lot 1063 (Roof) area.  
57.8 feet from Sidders  
Corner post to shed (Cousins)

W. LINE Lot 1064

Ray 12" offset line from stone  
at front to post at line  
Dist from offset line to stone  
1st post from sidewalk 4 1/2" (New)  
2nd " " " 7" "  
3rd " " " 6" "  
4th " " " 5 1/4" "  
5th " " " 4 1/4" "  
6th " " " 7" "  
7th " " " 9" "  
8th " " " 12" (Old)  
9th " " " 12" "  
10th " " " 12" "



A.B.C.D said to be built by Rush for Cooper  
Post I to H 17" Rush says Post H is line 190 feet from  
H to stone at G



## FISHER SURVEY

N. LINE LOT 1064

Arburn <sup>2</sup> of Ludlow

Iron Bar

Hydrant N.W. 27.30'

S.W. Cor. Stone foundation of house

N.E. 63.56'

Iron Lamp post S.E. 27.40'

N.E. Cor. house S.W. 63.35'

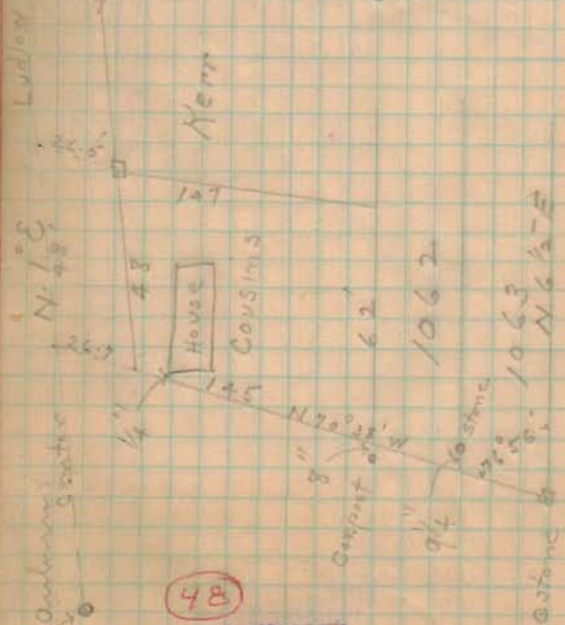
Eastern <sup>2</sup> of Ludlow

Iron Bar

Lamp post N. 33.3'

Maple S.E. 54.4'

Maple S.W. 32'



48

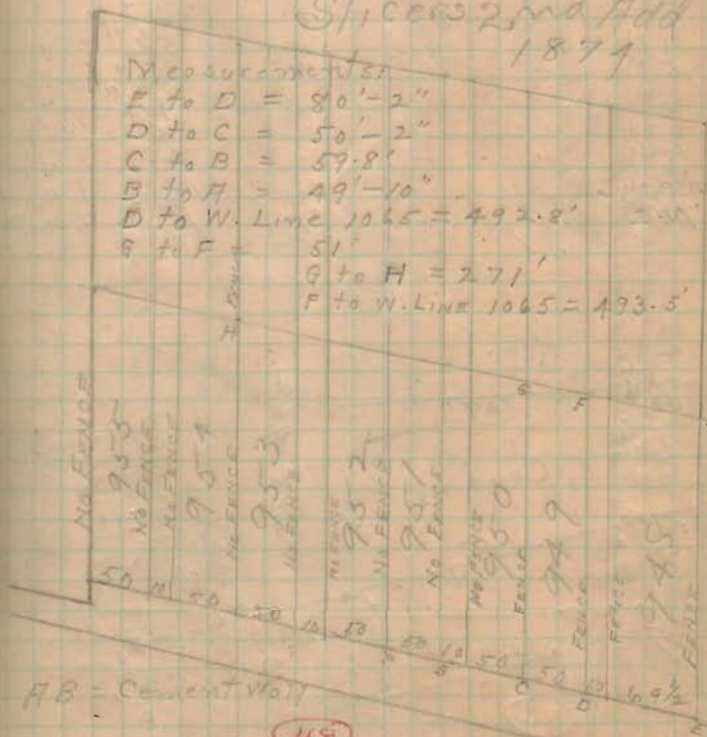
INDEXED ON MAP

Found intersection of  
utilities at  $\odot$  only street  
Ludlow .8 1/2' E. of sewer  
manhole cast iron frame.

Found iron bar  $\odot$  Ludlow  
and Eastern Ave.

Ran line N. 1° E

Slices 2nd Add  
1879



A.B. - Cement Wall

48

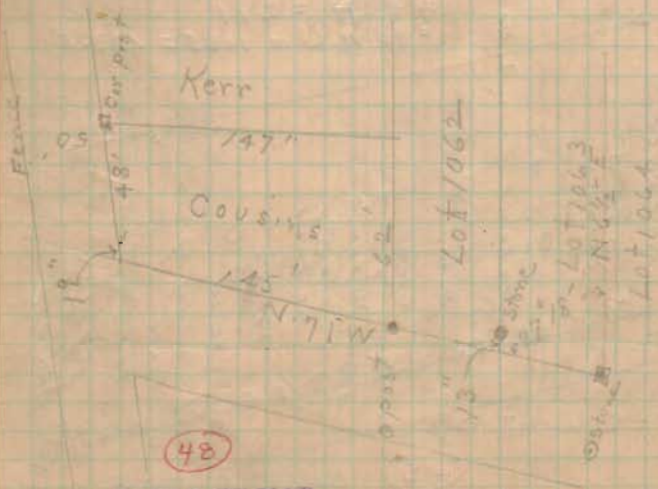
INDEXED ON MAP

Lot 1063 (Roof) meas.  
57.8 feet from Sidders  
Corner post to S shed (Sidders)

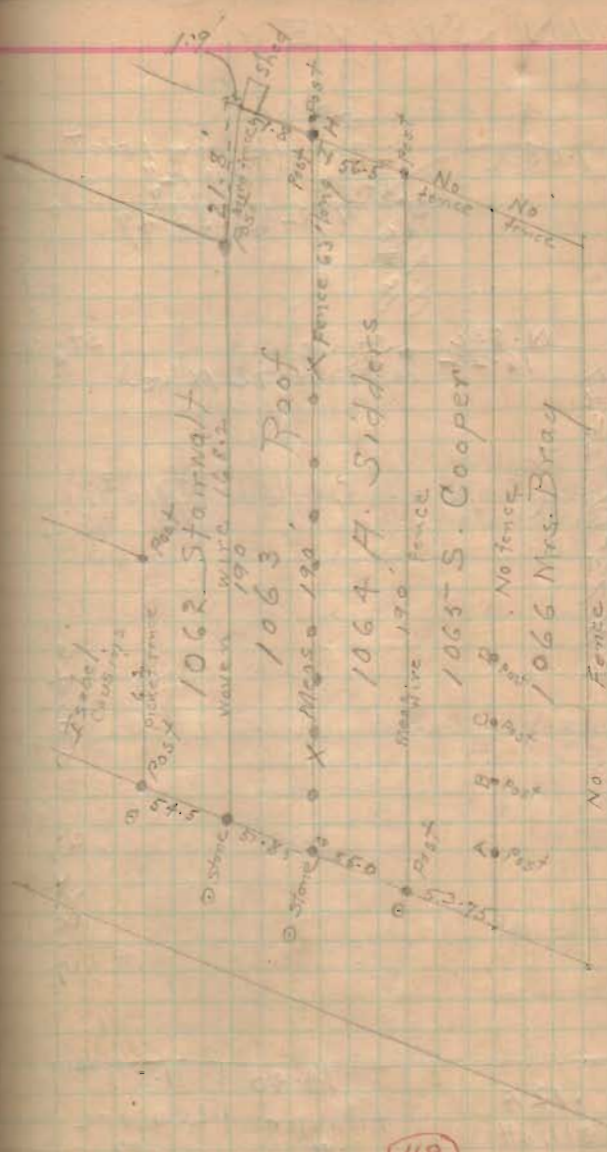
W. LINE Lot 1064

Ran 12" offset line along stone  
at front to post at local  
dist from offset line to spring "

1st post from sidewalk	7 1/2"	(New)
2nd "	7 "	"
3rd "	6 "	"
4th "	5 1/4"	"
5th "	5 "	"
6th "	4 1/4"	"
7th "	9 "	(old)
8th "	7 1/2"	6"
9th "	12 "	11"
10th "		



INDEXED ON MAP



INDEXED ON MAP

ABCD said to be built by Rush for Cooper  
Post I to H 17" Post I to Post H in line. 190 feet from  
H to stone at G