

SURVEY FOR ELMER MAGUIAN (S.W. COR.)

SEC. = 1.0834



$\cos 22^\circ - 38' = .9230$
 $\sin 22^\circ - 38' = .38483$
 $30 \div .9230 = 32.50$
 $2.0 \div .9230 = 21.668$

See Drawing on detail paper

305.70 \pm Everett Tap Day
 50.20 \pm close to Angle
 486.20 Angle to \pm West
 841.90 Measurement on \pm of Garfield
 509.0 Struck
 787.00
 31.95 Angle to St.
 791.95 Dist. at property line
 986.10 Blue print dist.
 5.80 Excess.

11/1/23 - Enderlin
Fine Day - Wright

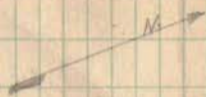
Garfield \pm Everett St.

(Sec. 35 TOWN 4 R. 14.)

Note:-

Plot Book - Page 14 shows
Garfield St. (Then
Rail Road St.) to be 60'

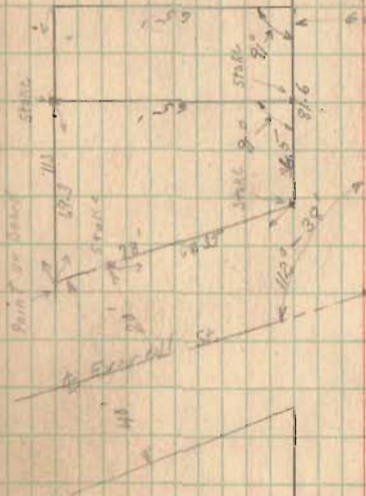
Also note that
in Vol. 109 of Deeds
pages 527 in Book
Billed to Special Jt
states Everett St. is 40'



Garfield Ave.

Field book # 51
Page 40
shows Everett St.
to be 40' wide
This survey by
S.A. Buchanan Apr.
4, 1904.

Plate copied from
City Eng. Record # 1
Page 116



INDEXED ON MAP (56)

Survey for Elmer Magoon (Continued)

References to monuments obtained at City Building.

Garfield to Everett.

25'-7" To inside edge of sidewalk by fitting
20.0 to Cor of frame

35'-8 1/2" 35.6 to 14" Black Walnut west side of Garfield St.

24'-6" 24.5 to Edge of sidewalk, inside edge

24'-7 1/2" To 15" Maple N.W. from Pin

Garfield to West.

27.6 Top screw of hydrant N.E. Cor of St.

28.45 Water valve box N.W.

36.2 Cor. foundation two story frame S.W.

30.9 Telegraph pole S.E.

42.0 N.E. Cor. of cement spandrel wall of culvert sec.

58.9 8" Maple.

Garfield to Clagg.

22.45 Top screw of hydrant N.E.

23.7 S.E. Cor. frame.

33.95 N.W. Cor. 1 1/2 frame

34.35 N.E. Cor. cement porch floor (East porch)

Columns to Everett.

26.45 Hydrant S.W. (with walls level)

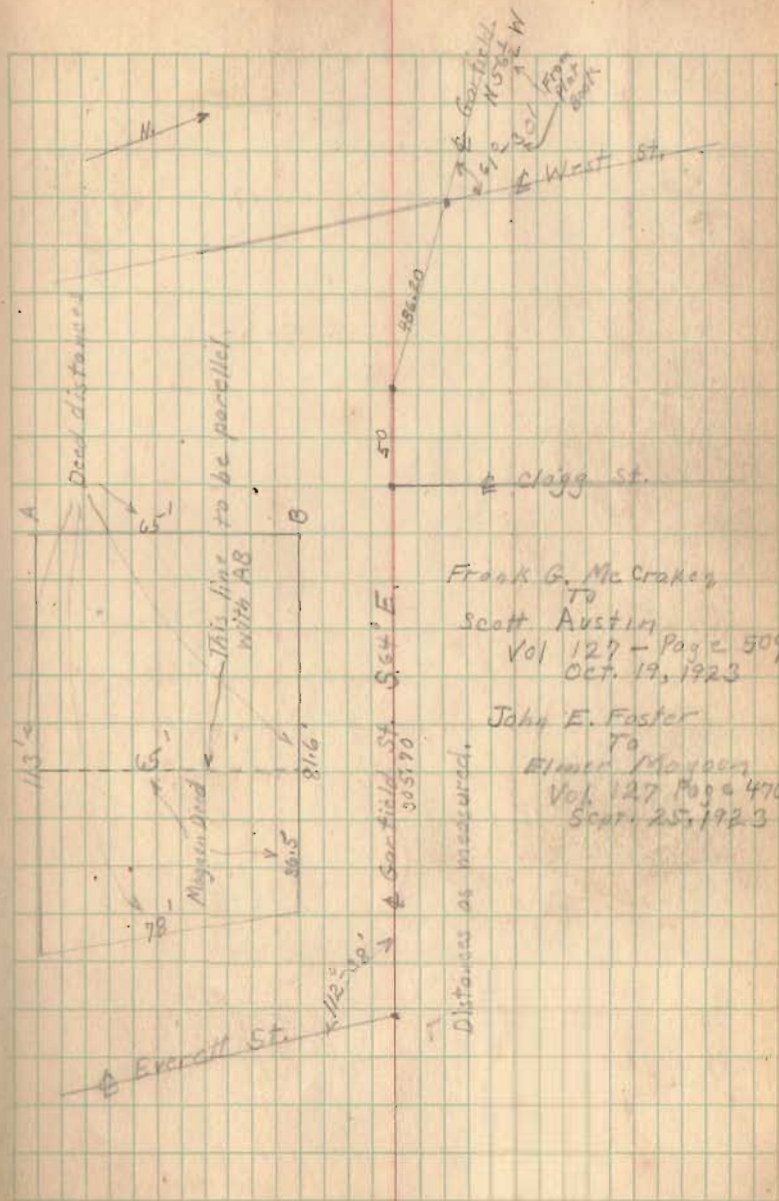
59.58 Foundation of frame S.E.

60.22

(This iron is flush with pavement)

11/2/23
Fine Day

Wright
S. Barker



Frank G. McCracken
To
Scott Austin
Vol 127 - Page 509
Oct. 19, 1923

John E. Foster
To
Elmer Magoon
Vol 127 Page 470
Sept. 25, 1923