

June - 22 1925
 H. E. Wright
 Elev. Vit Y, March, 24, 1936

9.95
 .58
 10.50

Sewer North Side of Court House

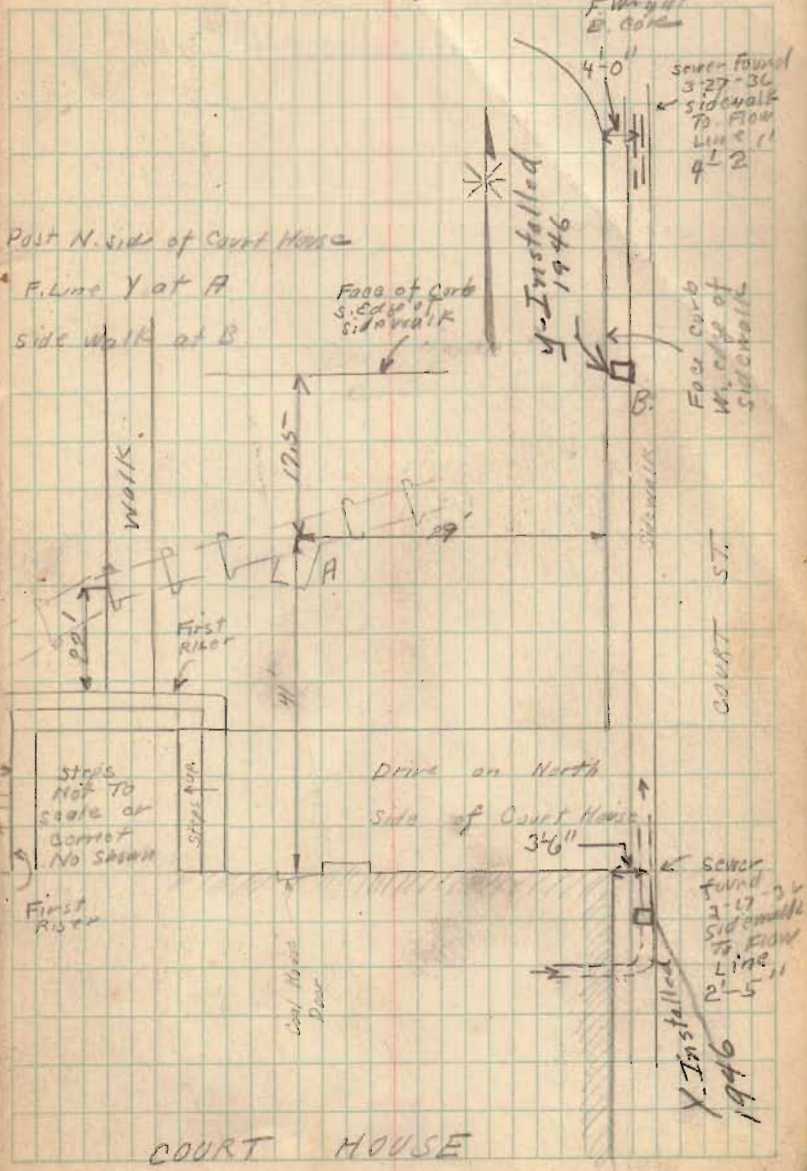
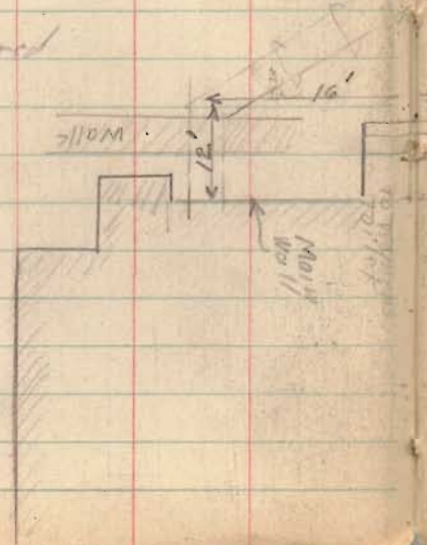
A - sewer Y located as shown 6-22-25
 dug open by George Henry March - 1936

	± S.	H. I.	- S.	Elev.	Gov. B. M.
Gov. B. M.	2.92	1253.80	1250.88	Gov. B. M.	
			10.50	1243.30	
			6.95	1246.85	

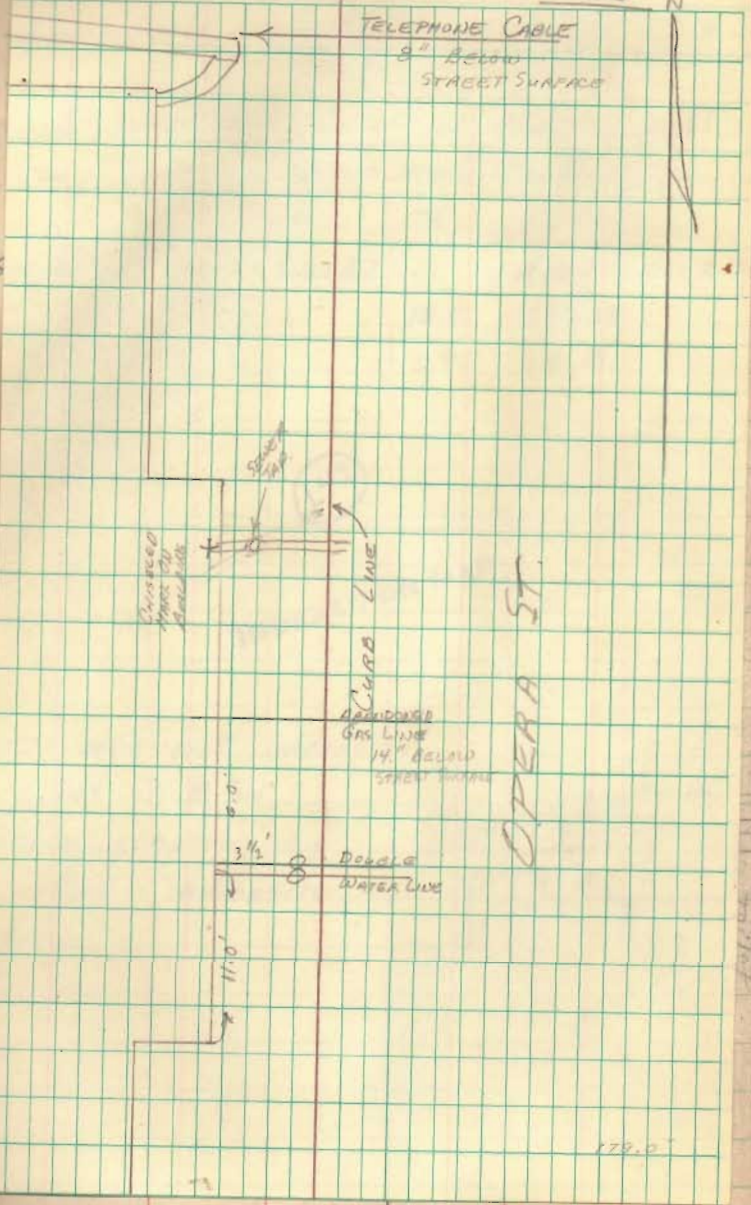
142

INDEXED ON MAP

Tile was not uncovered
 except at A
 Other location by
 surface indicatio-
 only



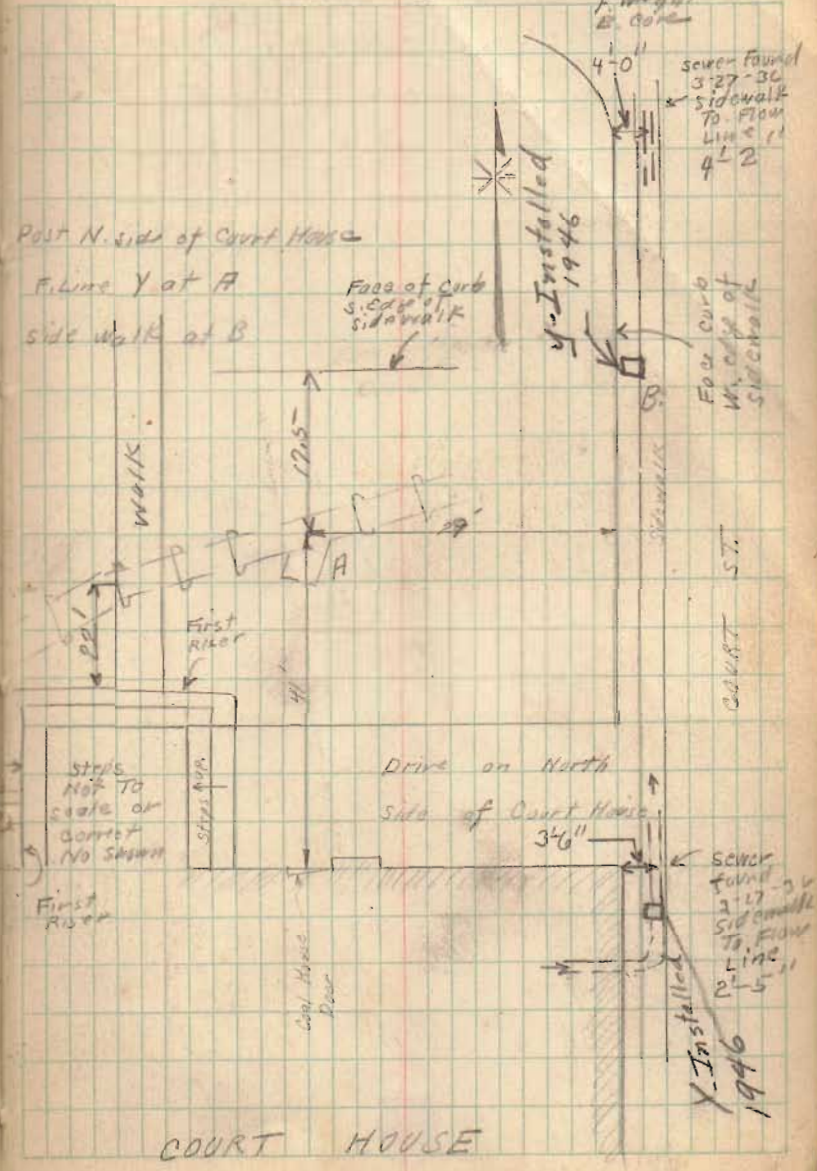
9/4/68
DEG N



178.0'

9.95
.58
10.50

June - 22 - 1925
Mr. Eric Wright
Elev. Vt Y. March, 24, 1936



Post N. side of Court House

Figure Y at A
side walk at B

Face of curb
S. side of sidewalk

Y-Installed
1946

Face curb
W. side of sidewalk

COURT ST.

Drive on North
Side of Court House

SEWER FOUND
3'-17"-36"
Sidewalk
To Flow
Line
2'-5"

Y-Installed
1946

COURT HOUSE