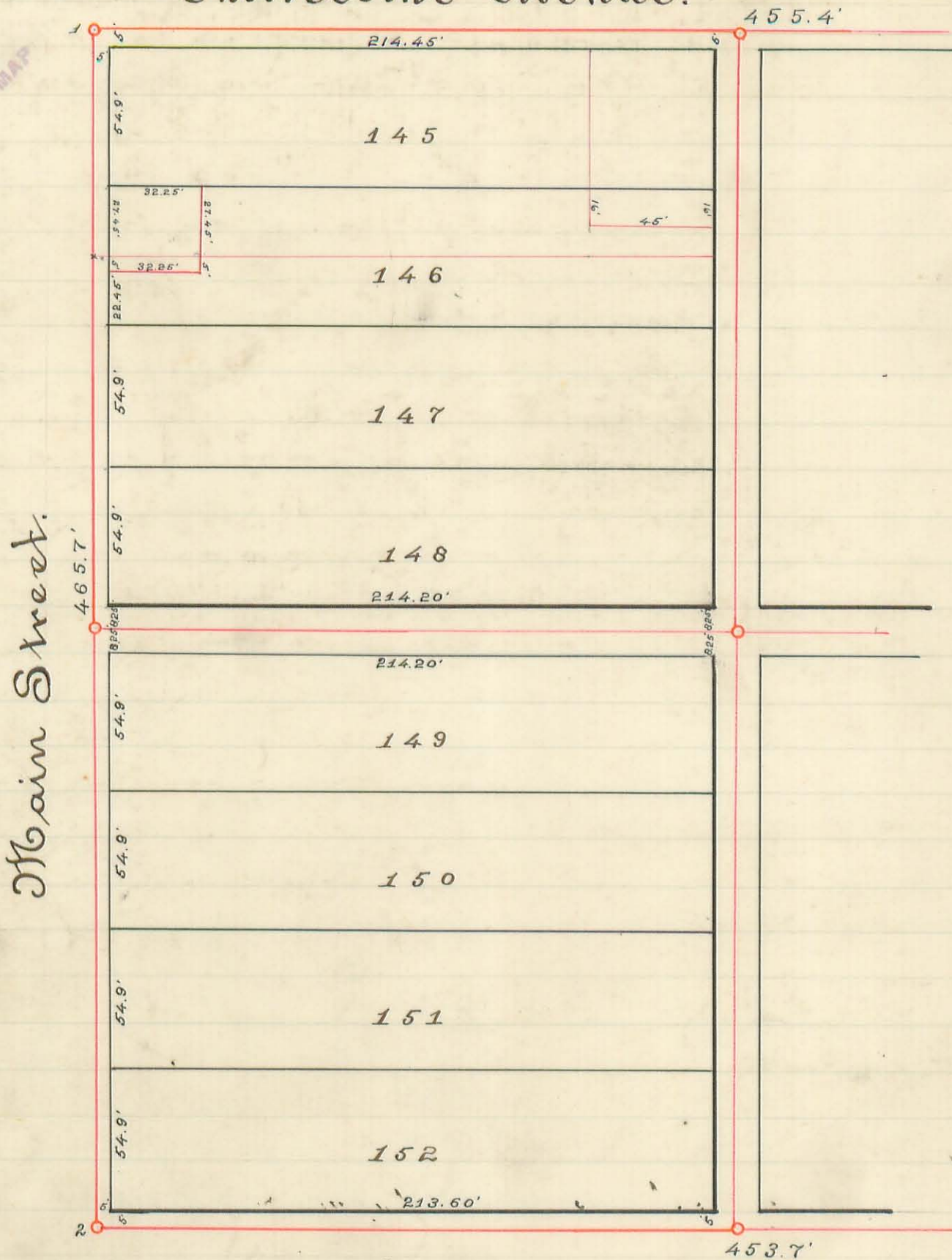


Chillicothe Avenue.

465

INDEXED ON MAP



Auburn Avenue.

- N^o 1 Marked by 1/2 inch hole bored in side walk stone 5 feet out from the true line of lots each way.
- N^o 2 Marked by 1/2 inch iron rod 18" long drove just below the surface and 5 feet out from lot lines each way.
- N^o 3 Not shown on annexed plat is 453.7 feet east of N^o 2 and is also marked with an iron pin 5' out from lot lines each way. it is also marked with a drill mark in S.W. stone in line with south line and 5' east. all lines surveyed around this block are 5' outside of lot lines.
- N^o 4 Marked with drill in S.W. stone 455.4' East of N^o 1. the mark here is also marked with guide stakes at line of lot and corner.

Survey. The above plat represents but half of the survey which was performed to establish the lines to lot N^o 146 and portions sold off the West end of it. To accomplish the object desired the centre lines of Main & Mad River Streets were established North and South also. Chillicothe and Auburn Avenues were established East and West all in line with the regular established monuments of the Incorporation. Then offset lines were made to within 5 feet of the lot lines around the entire block. The measurement there made was distributed proportional across the block.