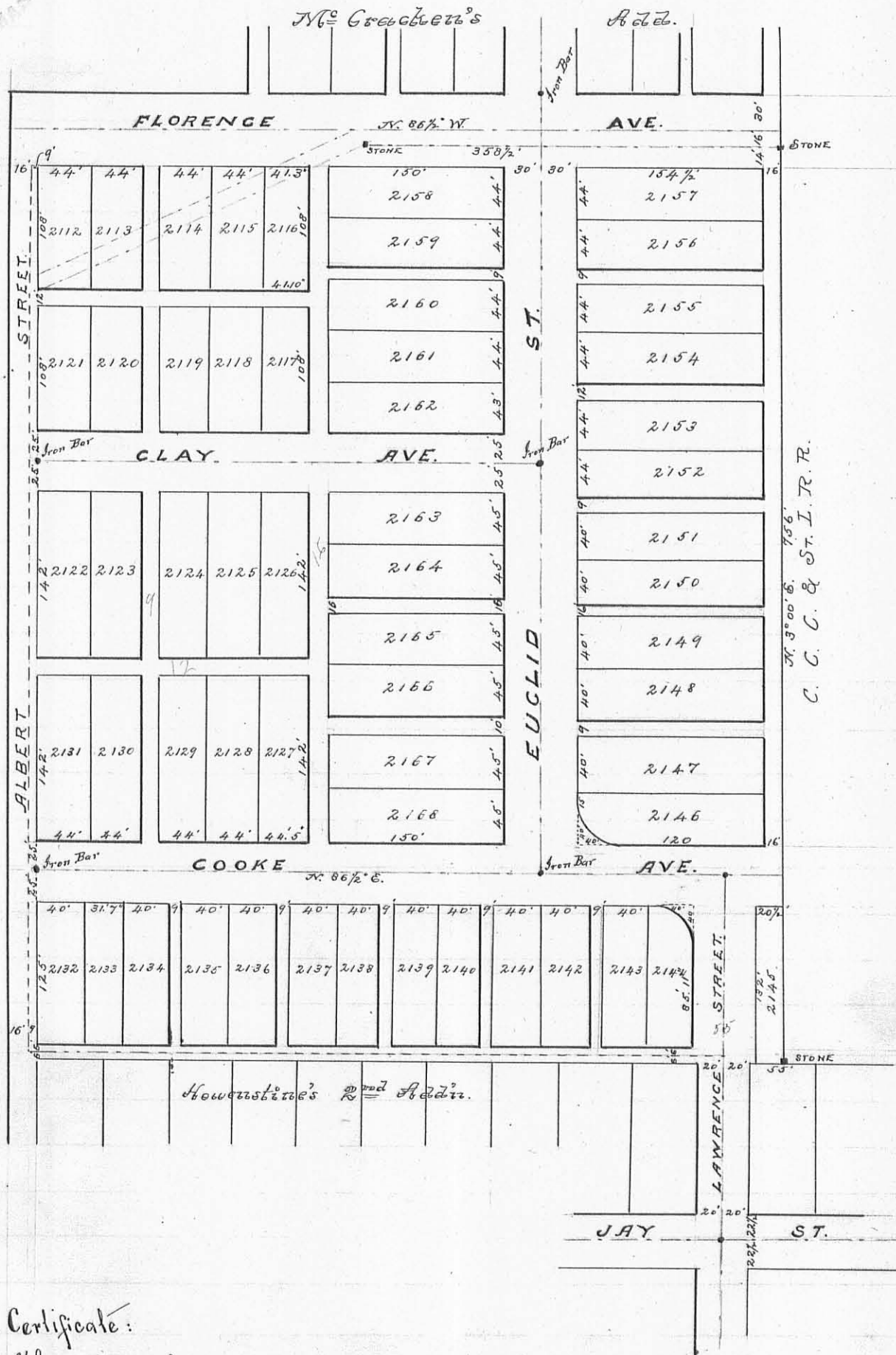


Plat of McCracken and Cooke's Addition to Bellefontaine, Ohio.

Sec. 35. T4. R. 14.

469



INDEXED ON MAP

Surveyor's Certificate:

The above plat is a correct representation of lands surveyed by me, and laid out in January 1891 for the owners, Jas. E. McCracken, Thos. J. Cooke and Orrin L. D. Cooke, same being in Sec 35. Town 4. Range 14 Lake Township, Logan Co. Ohio, round iron bars about 2 feet long were driven where noted on plat.

H. C. Moore, Surveyor.

W. A. Ginn, County Surveyor.