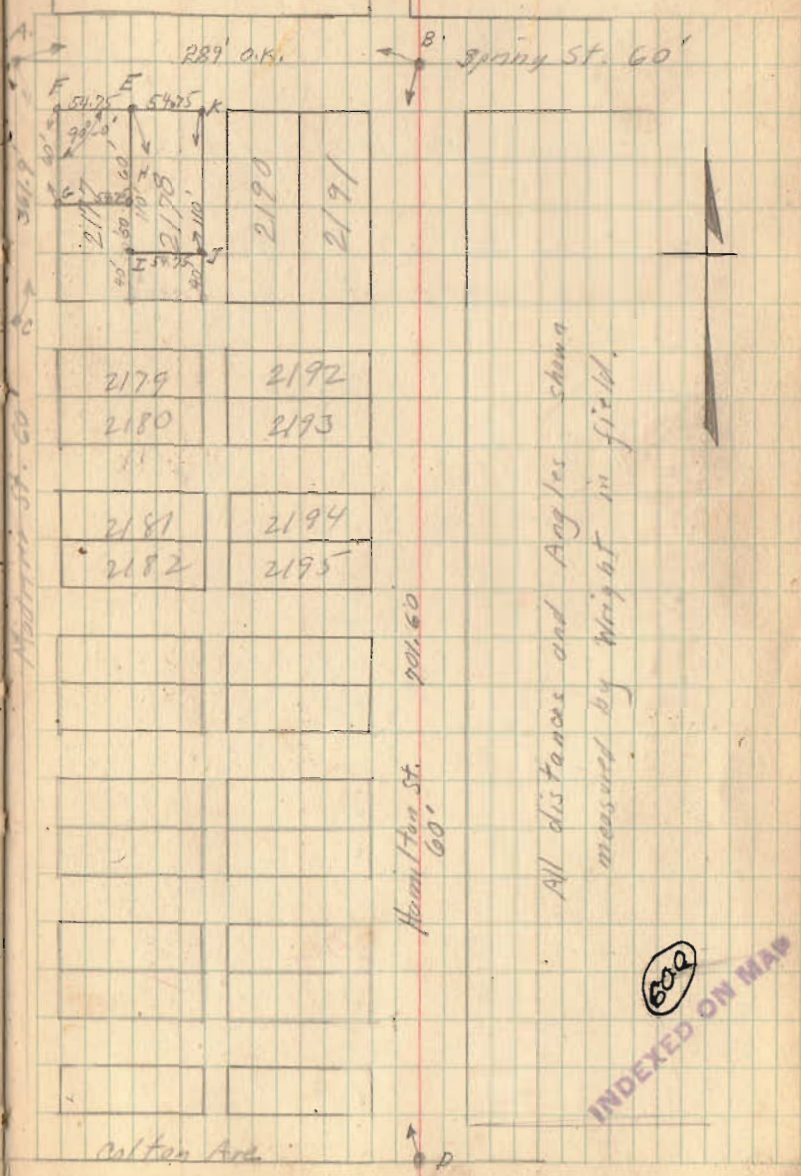


Gay Survey Lot 2178 ^{and} 2177

June 3-1920
Wright
Ed. Carr, 57

- A. Iron Pin found.
- B. " " "
- C. " " " and witnessed
 To 15" Poplar N.W. 26'-4 1/2"
 To 6" Ash N.E. 25'-1 1/2"
 To 4" " N.E. 37'-3 1/2" Cantwell Ave 30'
 To E. edge of E. Walk (Produced)
 on Madison 26'-8 1/2"
 To N. edge of N. Walk (Produced) on
 Cantwell 14'-11"
- D. Iron Pin found and witnessed
 To Hydrant N.W. 40'-6"
 To 2" Maple N.E. 28'-4"
 To S.W. Cor. of Foli. N.E. 50'-6"
 E. edge of E. Walks (Produced) 23'-4"
- E. Pipe placed by Wright
- F. " " " "
- G. " " " "
- H. " " " "
- I. " " " "
- J. Ford Axel Plead "
- K. " " " "



INDEXED ON MAP

(over)

Guy Survey (Continued)

see Page 57 for Location.

Sarah P. Guy Vol. 120 Page 183

All of Lot 2178 Except 40' off of South

Vol. 127 Page 60

60' off of N. End of Lot 2177

June 3-1926

58

