

St Paris + Sandusky 1 P. in Top Screw Hyd. N.E 33.7
 S.E. Cor Stone fda. F. Res. NW 61.8
 East Edge X Walk W 19.1
 N.E. Cor fda. 15 F = SW 60.8
 Tel Pole S.E 25.2

Troy, + Sand I.P. Apple N of E 67.
 Apple E of N 81.0
 West Sand C.I. Marker on E West and S'S of E of Sand.
 Top screw Hyd N.E 35.8
 NW Cor fda. 15 F = S.E 51.6
 NE Cor 1 1/2 S.F. from SW 56.95
 marker 10" below surface of st

Garfield + Troy 1 P. 14" below surface
 on E. Garfield and 15' W of E line of Troy
 and 20' E of W line of Troy.
 Hyd N.E 22.3 Cor house S.E 44.0
 Tel pole NW 53.1 Elect H.P. E on
 Tel pole SW 19.9

Col + St Paris N 1 P. SW cor 15 F Creamery
 N.E 53.65 NW Cor fda. 25 F. S.E 81.4
 S.E Cor fda. 25 F = NW 56.25
 N edge side walk S 22.1
 Tele pole S.E 20.4

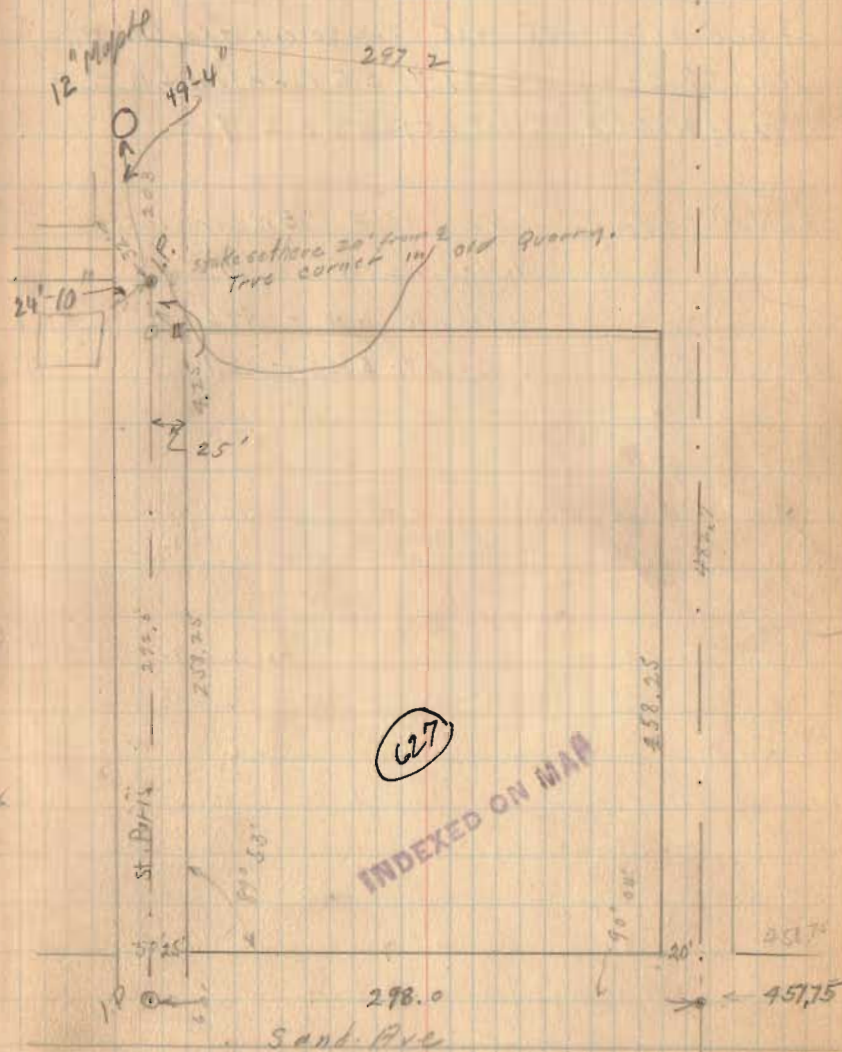
St Paris = 50'

Hamilton Survey
 Sandusky + Troy.

4/27/27
 Montgomery
 Smucker
 Miller

54

© I.P. Garfield



Troy + Columbus - I.P. old stone

marked + on top probably in West line
of Sec No 35 NE 34.15 Top soren Hyd. SW 33.9
NW Cor. 25.F. - SE 61.7 SE Cor stone fda. 25.F
W of N 61.3 E lect Lt pole SE 28.7

Sanduski + Troy NE 15.F SW Cor 105.1

Telep pole NE - 21.0

Telep pole NW - 44.6

light pole E of S - 22.7

