

Venable Survey
Hayes St.

Measurements Taken on property
edge of sidewalk. D.

Distances by stationing as shown.
Measured clockwise beginning 0+00
at each corner

stationing given to \pm of walks to houses

Monument \pm Hayes ^{9th} Columbus - corner

Witness

Top screw Hydrant S.E. 31.85

see note
Book 41P
Page 48

Elin S.W.

Measure 6' E. for \pm of Hayes st. S. of Columbus ^{25.4}

Monument \pm Hayes ^{9th} Sandusky - corner

Witness

Top screw Hydrant N.W. 39.7

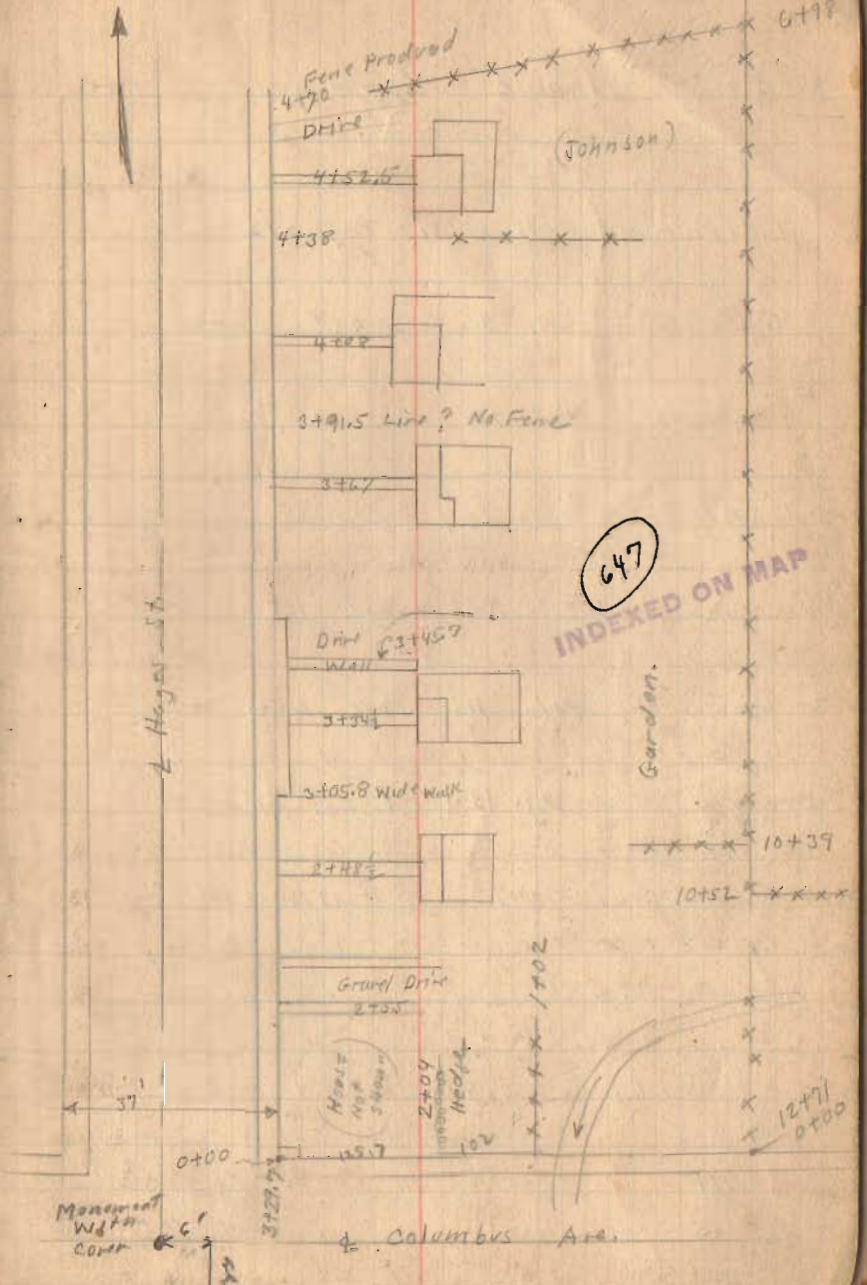
N. Edge of cross walk south 22'

22" sugar S.E. 72.2

see Book 597 Pages 26-27

Sept. 19, 1927.
Wright
Ed. Cox

50



Venable Survey

L.C. March Deed. 131 - Page 512

Henderson Vol. 69 Page 444

Longbrake Vol. 126 Page 306

Venable Vol. 107 Page 58

Donahoe Vol. 103 Page 158

Johnson Vol. 115 Page 456

Hughes Vol. 134 Page 415

Donahoe Deed Calls for 10 Poles = 165 - 330

Venable Deed Calls for $\frac{1}{2}$ of 19 Poles = 156.75 - 313.50

Longbrake Deed Calls for 50 at back 170' on E. Side of Hughes

April 14 27

Measured from Wright's Stakes to present line of fence

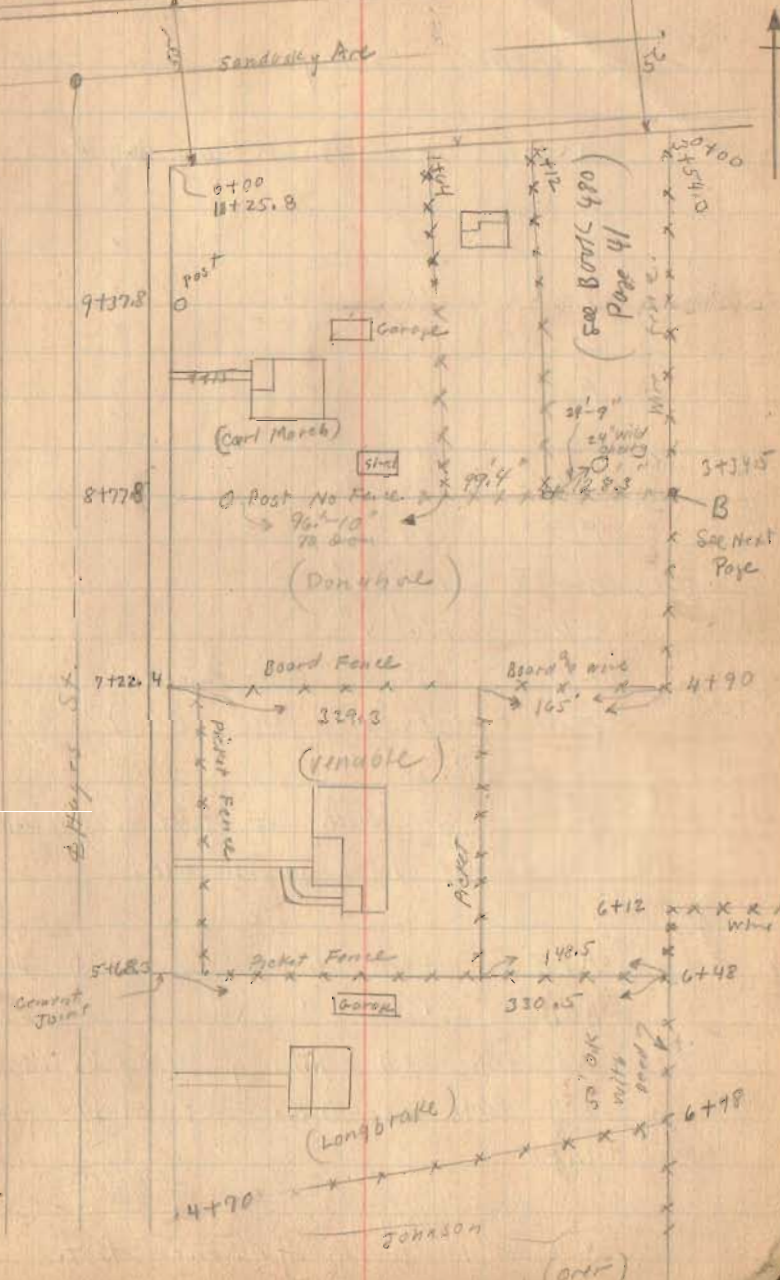
111' = 11" North to Center of posts

175' = 15" North " " " "

221' = 11" " " " "

9-17-27

57



Venable Survey

A	Iron	Tap	Flashed	by	Wright.
B	"	"	"	"	"
C	"	"	"	"	"
D	"	"	"	"	"
E	"	"	"	"	"
F	"	"	"	"	"

AF = 154'-9"

FE = 154'-9"

BC = 156'-4"

CD = 156'-4"

ED = 330'-6" (See Page 51)

FC = 329'-4" (" " " ")

F is 6" North of Joint in sidewalk.

E is at Joint in sidewalk.

AFE straight line

BCD " "

Old fence ED not very straight. Used End Posts as O.K. set stakes for Line

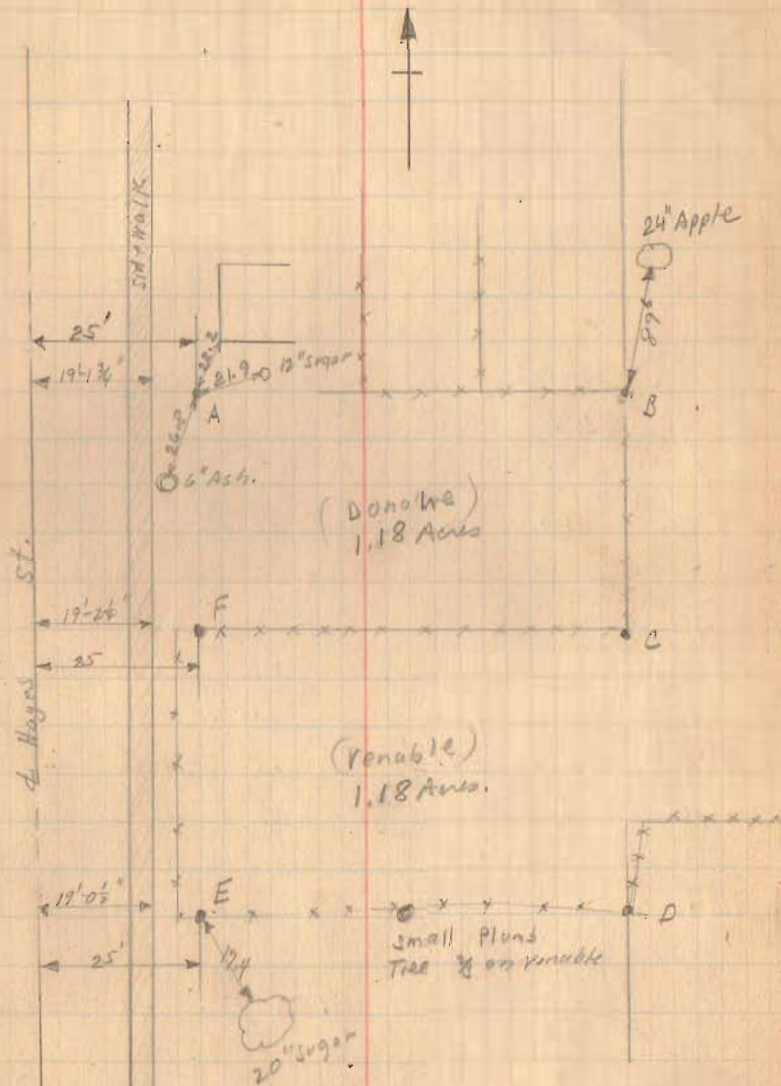
(Court decided fence line should be crooked as per F and E)

B About 10" south of Corner Post.

Sept - 25 - 1927

Wright.

52



Venable Survey

L.C. March Deeds, 131 - Page 512

Henderson Vol. 69 Page 444

Longbrake Vol. 126 Page 306

Venable Vol. 107 Page 58

Donahoe Vol. 103 Page 158

Johnson Vol. 115 Page 456

Hughes Vol. 134 Page 415

Donahoe Deed Calls for 10 Poles = 165' - 330

Venable deed Calls for 1/2 of 19 Poles = 156.75 - 313.50

Longbrake Deed Calls for 50' at back 100' on E. Side of Hughes

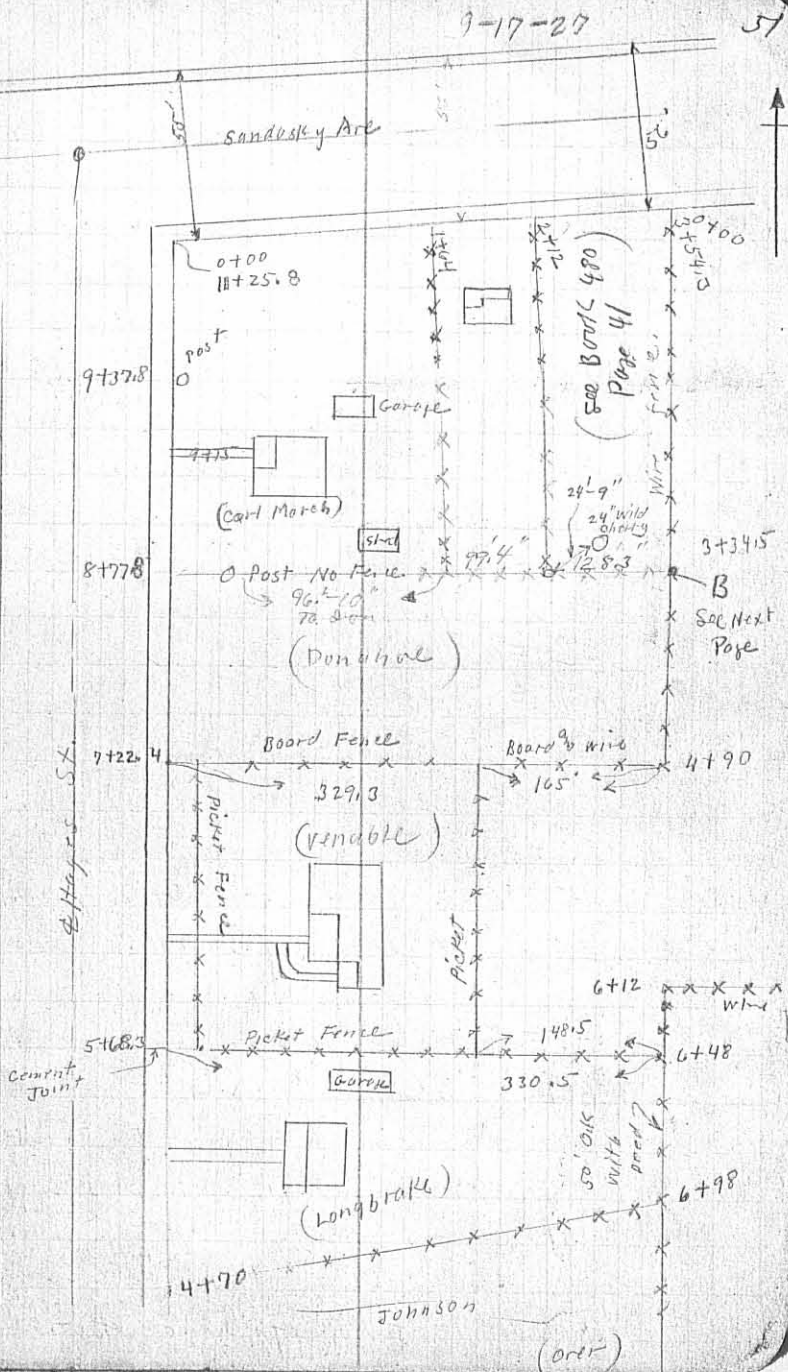
April 14 27

Measured from Wright's stakes to present line of fence

111' = 11" North to Center of posts

175' = 15" North " " " "

241' = 11" " " " " "



INDEXED ON MAP
6477 1P-1

Sept - 25-1927
Wright.

Venable Survey

A	Iron	Pipe	Placed	by	Wright.
B	"	"	"	"	"
C	"	"	"	"	"
D	"	"	"	"	"
E	"	"	"	"	"
F	"	"	"	"	"

- AF = $154\frac{1}{2}$ "
- FE = $154\frac{1}{2}$ "
- BC = $156\frac{1}{4}$ "
- CD = $156\frac{1}{4}$ "
- ED = $330\frac{1}{6}$ " (see Page 51)
- FC = $329\frac{1}{4}$ " (" " ")

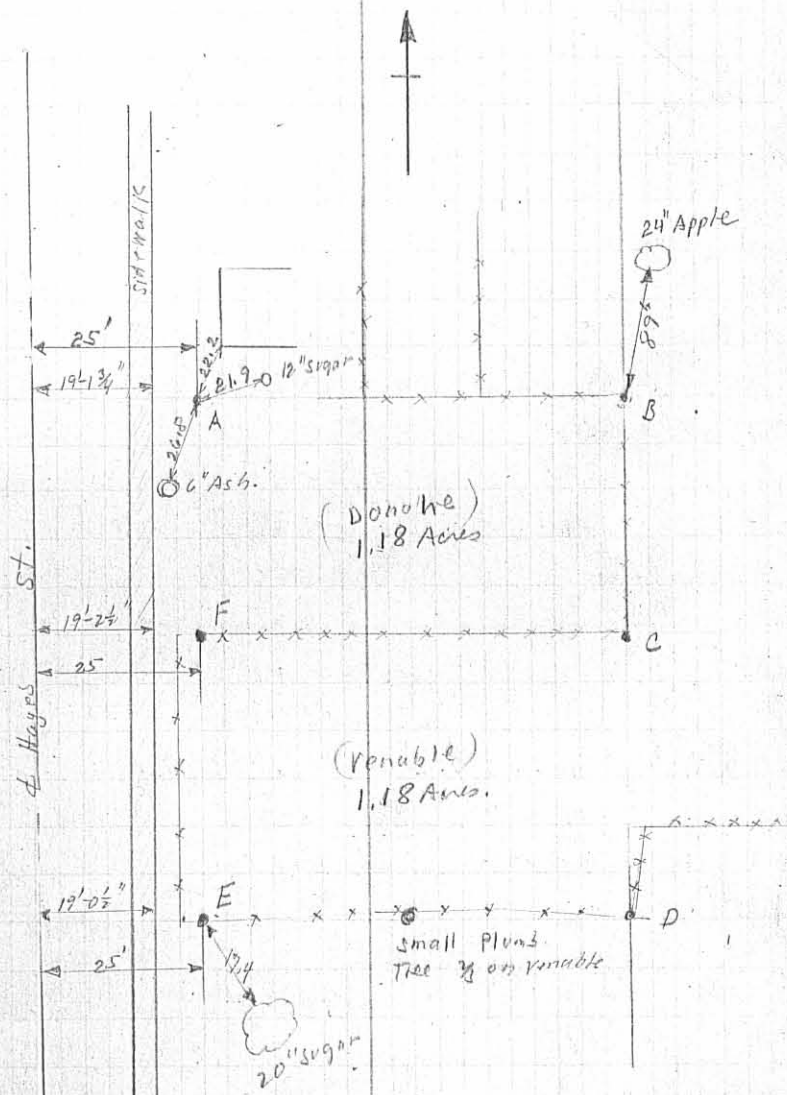
F is 6" North of Joint in sidewalk.
E is at Joint in sidewalk.

AFE straight line
BCD " "

Old fence ED not very straight. Used
End Posts as O.K. set stakes for
Line

(Court decided fence and line should be crooked as per Fence)

B About 10" south of Corner Post.



INDEXED ON MAP
C47- 1P-2