

March 23, 1928  
Fine day

Wright  
Ed. Cve.

Lot, 2484 West Street Bellefontaine  
Surrey for Hamilton Bros.

Lots shown on Page 5 as shown  
on Plat Book.

Note Lots 1575-1576-1577  
1578-1579 are  
school property for  
Lincoln School.

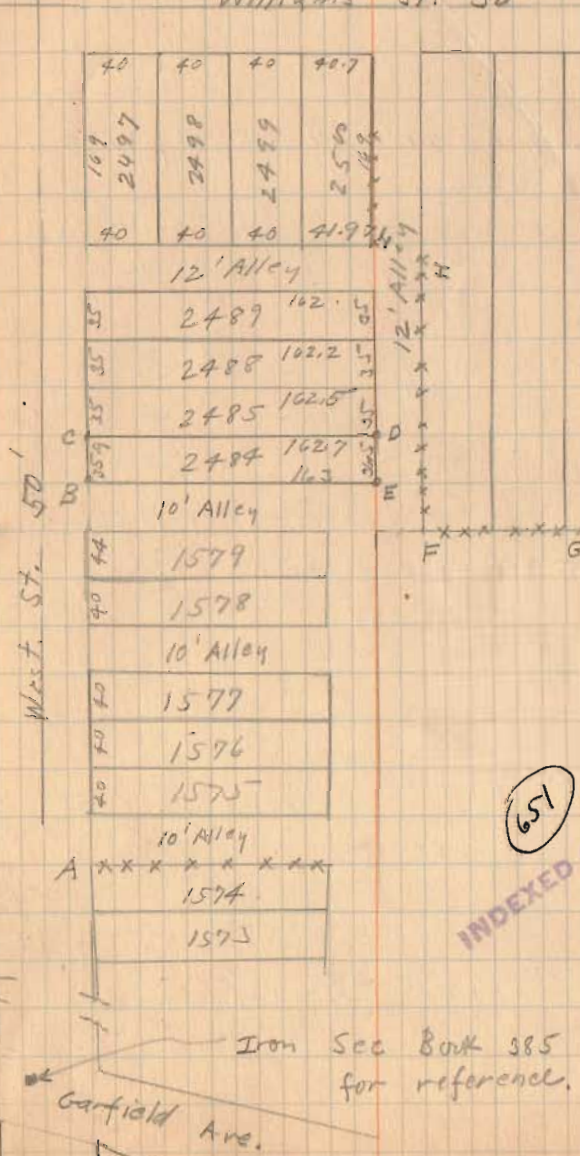
Measured from Williams St. South  
To B. Lot Distances all O.K.  
Measured from fence at A North  
To B. About 1' excess here.

Set. E 12' West of Fence F.H.  
Set. E 10' North of Fence F.G.  
Made E.D. 36.5  
Made B.C. 35.9

Noted Distance from D To Post at lot corner  
at H. To Be O.K.

See Next Page for Lot as measured

Williams St. 30'



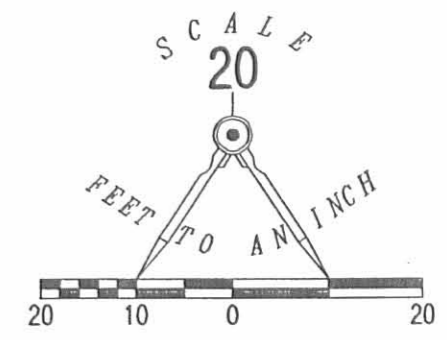
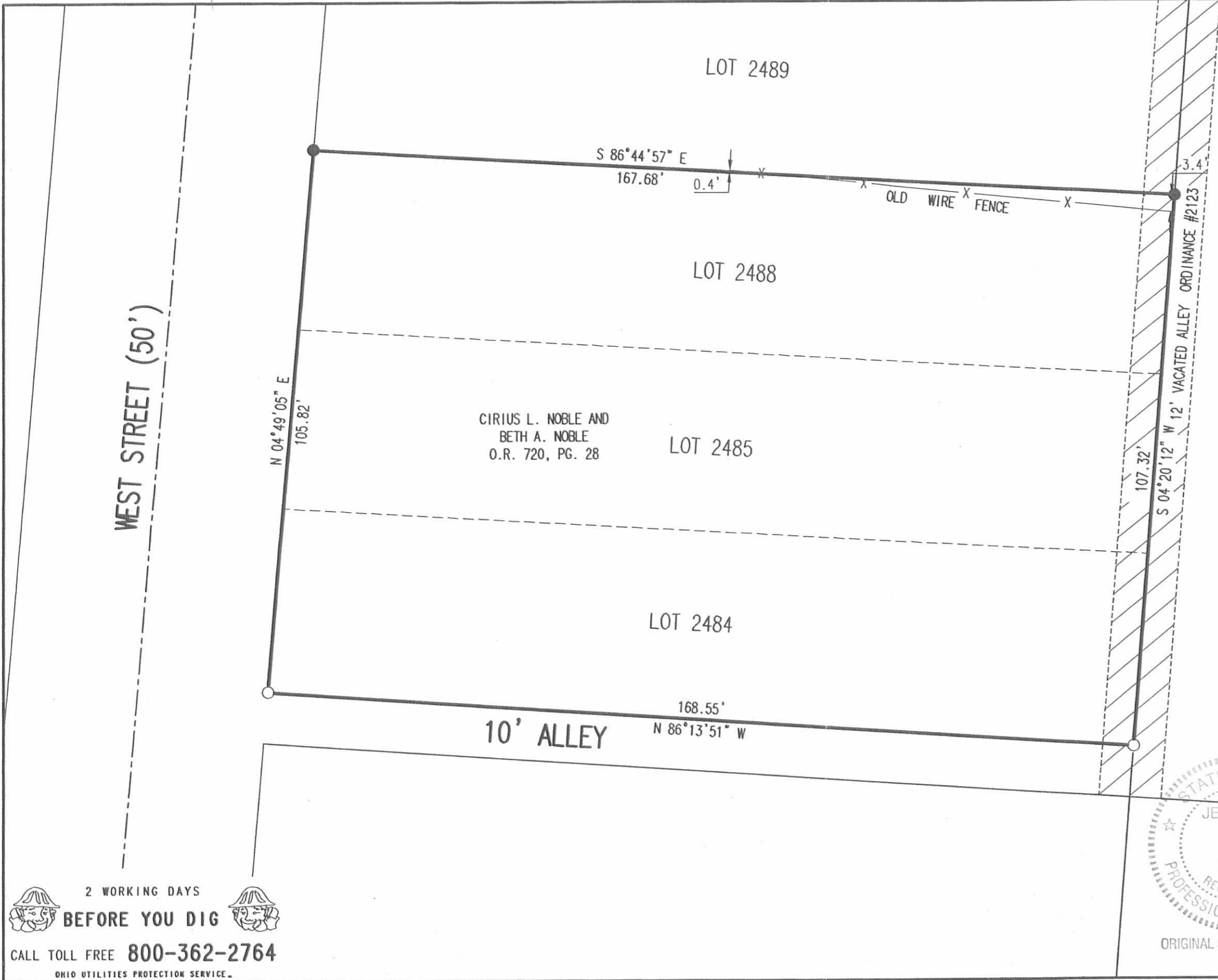
40	40	40	40.7
169	2497	2498	2499
40	40	40	41.924
35	2489	162.1	12' Alley
35	2488	162.2	
35	2485	162.5	
35	2484	162.7	
35		163	

651

INDEXED ON MAP



REVID 12-7-06 SAM OK



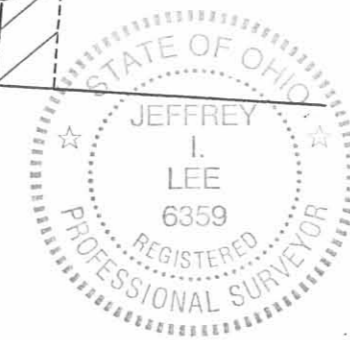
LEGEND:

- 3/4 INCH IRON ROD FOUND
- 5/8 INCH IRON ROD SET

RETRACEMENT SURVEY OF THE  
 CIRIUS L. NOBLE AND  
 BETH A. NOBLE  
 LOTS 2484, 2485 AND 2488  
 BEVIS PLACE ADDITION  
 PLAT CABINET A, SLIDE 49  
 OFFICIAL RECORD 720, PAGE 28  
 CITY OF BELLEFONTAINE  
 LAKE TOWNSHIP  
 LOGAN COUNTY, OHIO

SURVEYED BY:

*Jeffrey I. Lee*  
 JEFFREY I. LEE  
 PROFESSIONAL SURVEYOR 6359  
 DECEMBER 5, 2006



ORIGINAL STAMP IN GREEN

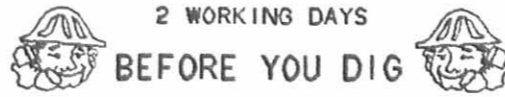
COPYRIGHT 2006 BY:  
 LEE SURVEYING & MAPPING CO., INC.  
 117 North Madriver Street  
 BELLEFONTAINE, OHIO 43311  
 (937) 593-7335  
 KSR D1206 1625116 L-1625-3

2 WORKING DAYS  
**BEFORE YOU DIG**  
 CALL TOLL FREE **800-362-2764**  
 OHIO UTILITIES PROTECTION SERVICE.

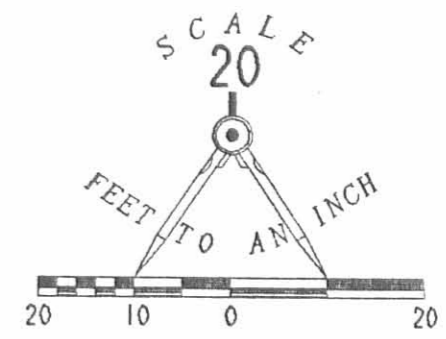
INDEXED ON MAP  
 6051 IP

WILLIAMS AVENUE (30')

NOTE: ALL UTILITIES ARE FROM AVAILABLE RECORDS.

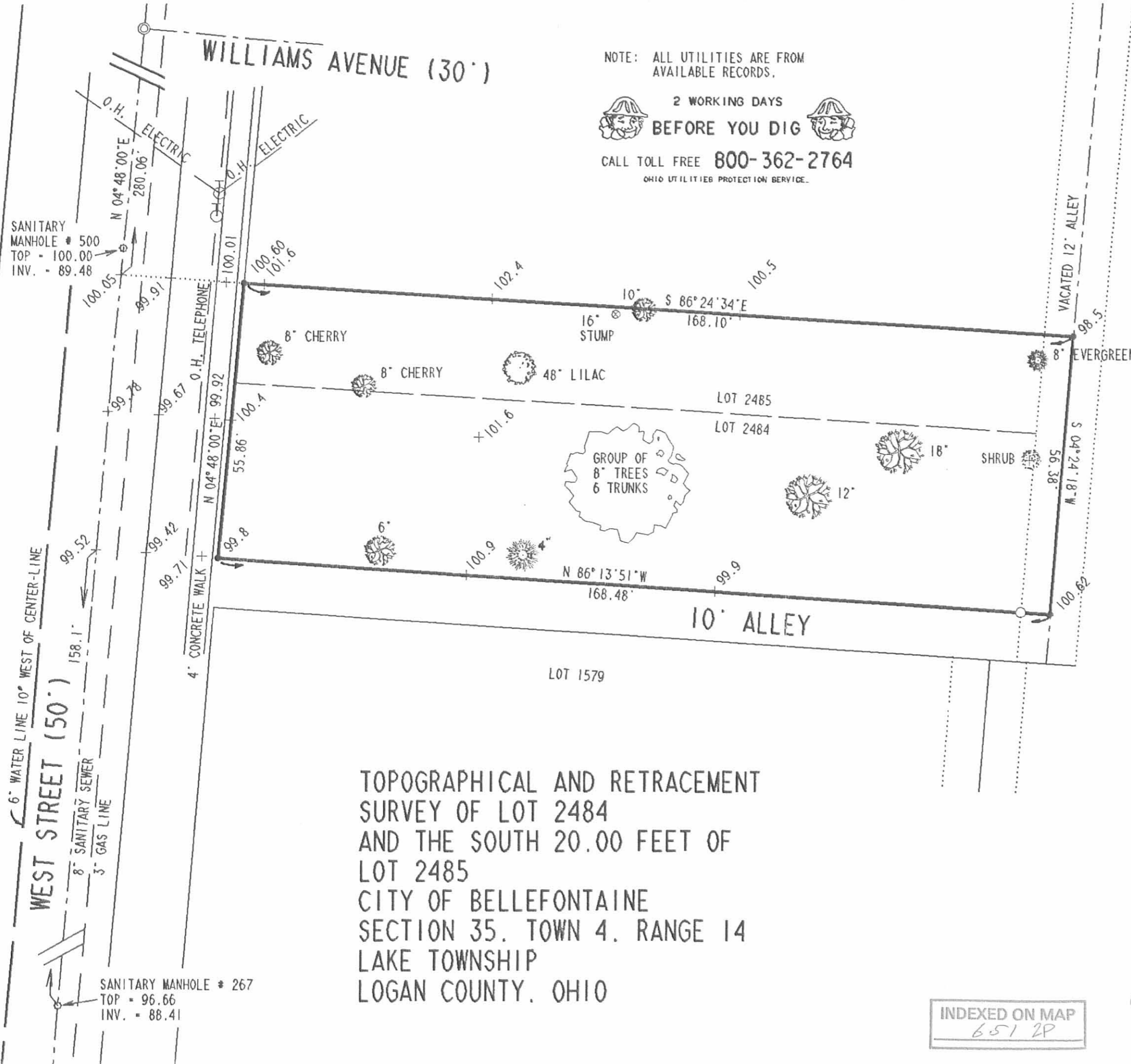


CALL TOLL FREE 800-362-2764  
OHIO UTILITIES PROTECTION SERVICE.



LEGEND

- NAIL & SHINER FOUND
- ⊙ 2" PIPE FOUND
- 1" I. ROD FOUND
- 3/4" I. ROD SET



TOPOGRAPHICAL AND RETRACEMENT  
 SURVEY OF LOT 2484  
 AND THE SOUTH 20.00 FEET OF  
 LOT 2485  
 CITY OF BELLEFONTAINE  
 SECTION 35, TOWN 4, RANGE 14  
 LAKE TOWNSHIP  
 LOGAN COUNTY, OHIO

INDEXED ON MAP  
 651 2P



ORIGINAL STAMP IN GREEN

SURVEYED BY:  
*Jeffrey L. Lee*  
 JEFFREY L. LEE  
 PROFESSIONAL SURVEYOR 6359  
 APRIL 15, 1991

LEE SURVEYING & MAPPING CO.  
 143 East Columbus Avenue  
 BELLEFONTAINE, OHIO 43311  
 (513) 593-7335



