

Moore's <sup>9</sup>/<sub>4</sub> Ross  
 Lots. 314 <sup>9</sup>/<sub>4</sub> 315 Brown St.  
 Bellefontaine.  
 Lots as shown on Plat Book, Page 3.

From City Records,  
 High To Brown on Main 522.88  
 Main To Madison on High. 528.45  
 Main To Madison on Brown. 528.19

Measured from Main To Madison  
 and checked with city. Note this  
 is an excess of .160

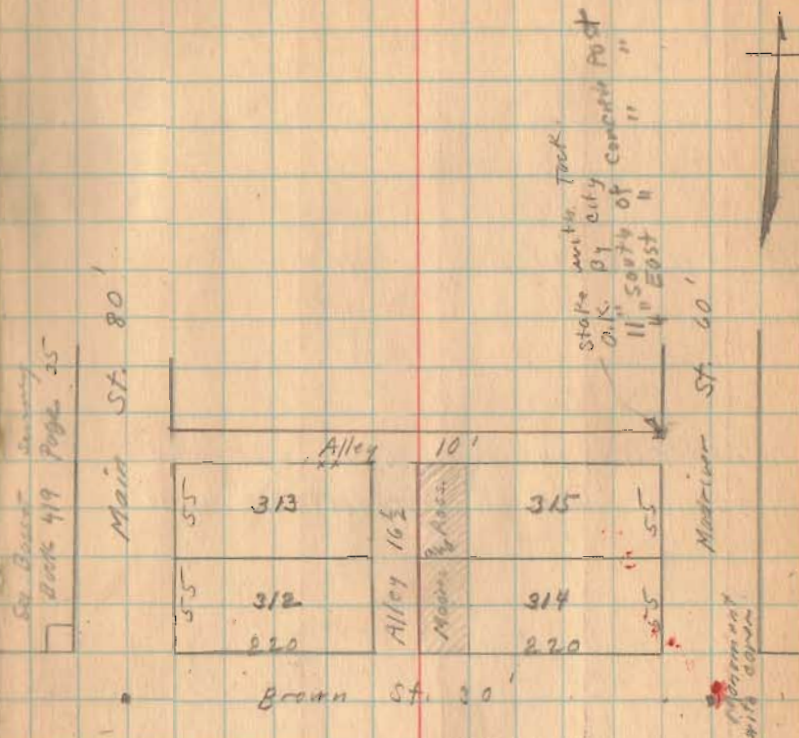
± of 16 1/2' Alley	8.25	1/2 Alley
	220.00	Lot
	30.00	Madison
	.80	Excess
	<u>259.05</u>	± Alley from Madison

± of 16 1/2' Alley	8.25	1/2 Alley
	220.00	Lot
	40.00	Main St.
	.80	Excess
	<u>269.05</u>	± Alley from Main

Established Alley as shown. Note this  
 is O.K. with curb to Alley in pavement.  
 Measured 8.25 from ± Alley for lot and  
 then 50'. Measured from Brown 30 for lot  
 then 110 for Blot of lot.

Jan. 9<sup>th</sup> 1929  
 Cold.  
 Wright  
 M. Carran.

9



674

INDEXED ON MAP

See Drawer R → (925)

(over)

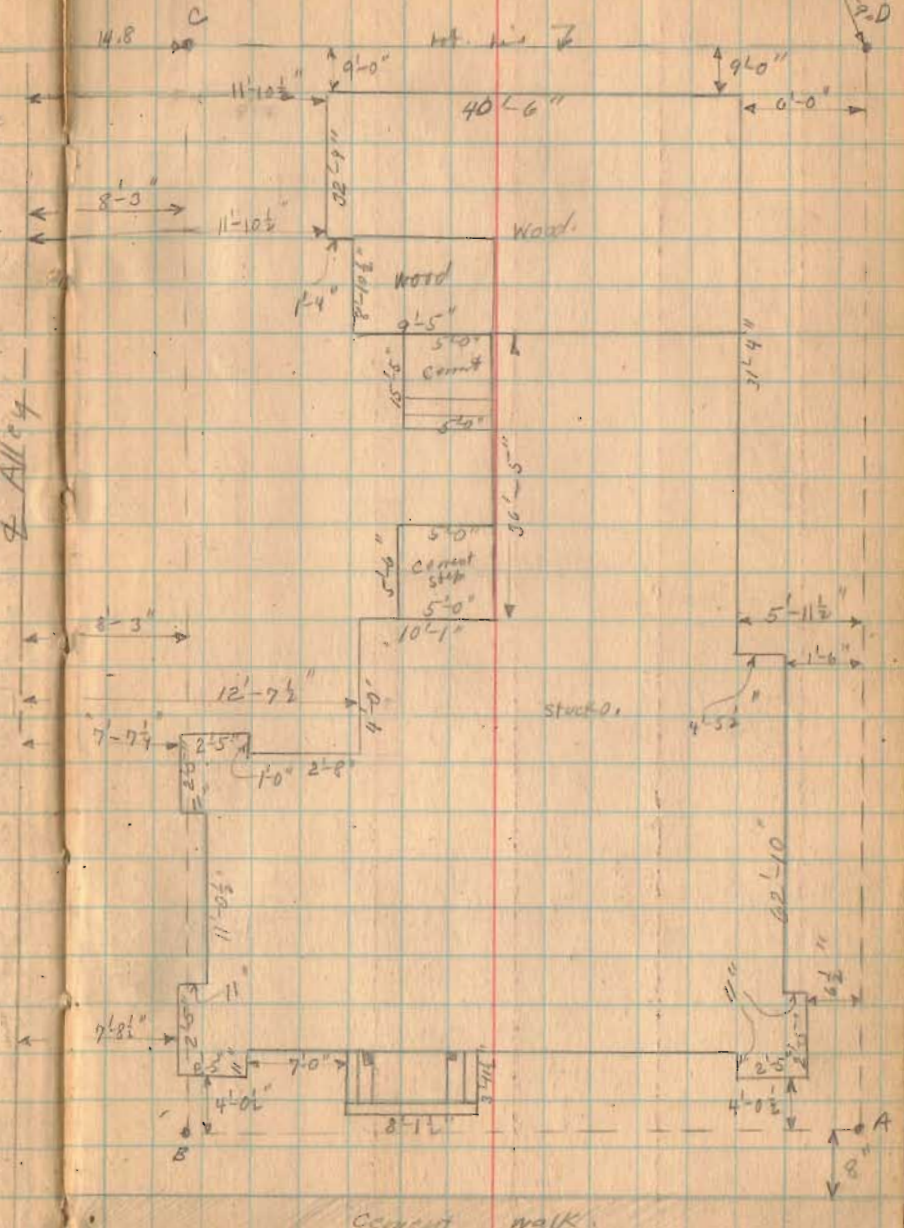
Moore and Ross

- A Iron
- B Mark on curb
- C 1" Iron Round 18" long
- D Bolt 15" long Square Head

Deed Vol. 134 Page 626  
50' off west end of Lots 314 and 315

Iron  
Fence  
Post in  
concrete

4' Alley



1-9-1929

concrete post 10

Morris and Ross

1-9-29

11

