

sec 300/K 577
Page 76

Columbus and Main

Record "A" p 34

Dated June 18, 1902

763

INDEXED ON MAP

= Columbus ^{and} Main =

Wit! - NW. - "A", + cut in top stone
watertable S. E. < Watson bldg. - 55.95'

N.E. - "B" round head, brass screw in pavement
43.50 from cent St.

"G" File mark, face inlet curb,
40.20 from cent St.

S.E. = "C" same as "B", screw, 43.73 fr. @ St
F same as G, file mark, 37.80 "

S.W. "D" same as "B" 36.59 "

"E" same as "A", watertable, Peoples
Nat. Bank - - - 56.23 "

Diag line - A F C ^{and} B, G, D, E
Cross at X Sts.

= Columbus ^{and} Mad. R =

Bap. Ch. 64' 8 1/2" } Stone 1884
Foss. stable 49' 8" }

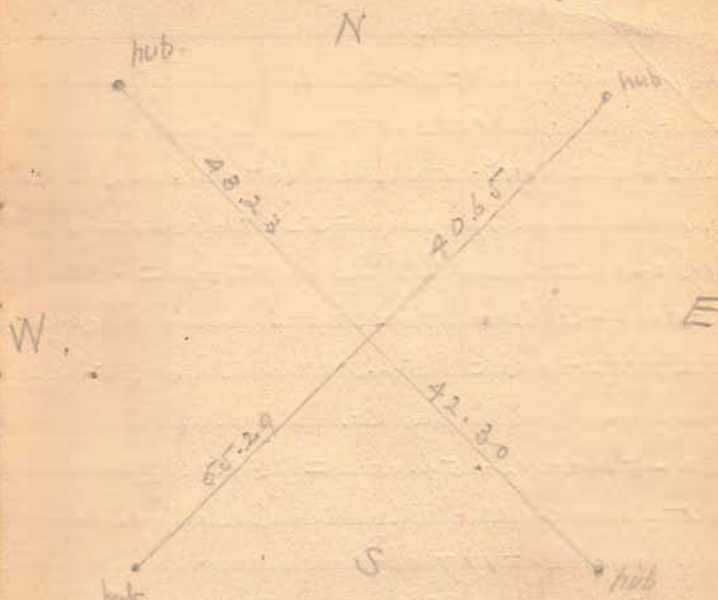
(Dist. Main to Mad. R = 526.5
" measured 525.57)

Survey for W. Little Lot 177
for Dr. Young. 3
Main and Sandusky

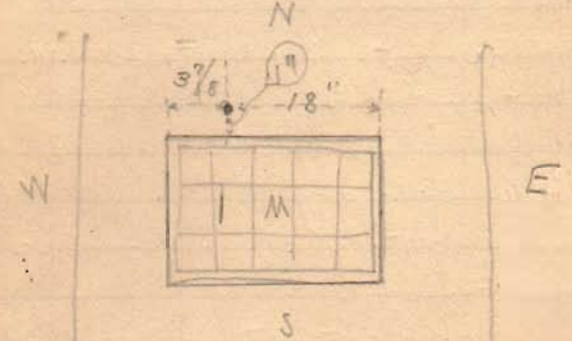
~~Main and Brown Mon~~
~~S. end iron inlet, E. side Main St.~~
~~face curb N.E. 24.95~~
~~S. end iron inlet, W. side Main St.~~
~~face curb N.W. - 24.85~~
~~Stone fence east, West's fence, N.E. 42.80~~
~~Top screw Hyd, N.W. sloping meas, 29.90~~
~~Elec. Lt. pole S.W. 29.90~~

Mad R and Sandusky
 Stone 1884
 Edwards house N.E. 46.4
 Hyd. S.E. 29.2

Distances		plat	meas
Columbus - Main	to Mad R	526.5	525.57
Main - Cols.	to San'y	526.5	525.13
Sandusky - Main	to Mad R	526.5	527.8
Mad R - Cols.	to Sandusky	526.5	525.0 ✓



Cent is 1" N. of Water Wks Valve box
 " 3 7/8" E " NW < " "
 " 18" W " NE < " "



Dr. Young Surrey Lot 177
on Columbus St.

Meas. dist: 525.57

Plat. " : 526.50 Shortage .93

$.93 \div 8 = .11\frac{5}{8}$ to each lot on line

Surplus on Sandusky = $527.8 - 526.5 = 1.30$

$1.30 + .93 = 2.23 \div \frac{525.0}{25} = .105 \div 8 = .013$

$55.00 - .11\frac{5}{8} = 54.88\frac{3}{8}$ on line

$54.88\frac{3}{8} + .013 = 54.897$ on line 25'
from @ Columbus St.

$30 + 54.88\frac{3}{8} + 54.88\frac{3}{8} = 139.76\frac{3}{4} =$

Dist from @ Mad River $\frac{3}{4}$ of Columbus to
W. Line Lot 177

~~$30 + 54.897 + 54.897 = 139.794$ on 25' line~~

$30 + 54.109' 9\frac{5}{8}'' = 139' 9\frac{5}{8}''$

Col. $\frac{3}{4}$ Main

No monument. Could not use N.W. wit:
Use other three.

Main $\frac{3}{4}$ Sandusky

No monument. Used 4 reference
stakes (tacked).

Found monuments at Mad River $\frac{3}{4}$
Sandusky $\frac{3}{4}$ M.R. & Col.

July 16 + 17, 06

Dist on Mad River = 525.00

202

Dist. on Main Plat 526.5 - 527.98

$40 + 30 = 70$ $527.98 - 70 = 457.98$

$227.49 + 30 = 257.49$

Ang. San. $\frac{3}{4}$ Main $89^{\circ} 49'$

" " " Mad R. $89^{\circ} 55'$

" Mad R. " Col. $90^{\circ} 04'$

" Col. " Main $90^{\circ} 10'$

Dist. on Mad River 525.00

$525 - 70 = 455.00 \div 2 = 227.50 +$

$30 = 257.50$

Set spike at 30' N. @ Columbus
also at @ Alley on Mad R. at
257.50 from @ Sandusky

West line Lot 177

and O Line Columbus

This line $139' 9\frac{1}{4}"$ from O Line

Mad River and $139' 9\frac{5}{8}"$ on
line 30' N. of O Line Columbus.

cut in curb on line.

On alley Line $525.57 + 1.13 = 526.70$

20 Surplus $21 + 8 = .02\frac{1}{2}$

$30 + 110 + .05 = 140.05$

offset 3' 6" E. Run line
through hall to Columbus St.

Set stake at S. side barn on line (tack)

Cut mark in N. side brick building
 $7\frac{3}{8}"$ E. of W. side building

Set stake at N.W. corner Lot at Alley line (tack)

L at N.W. corner Lot 177 $90^\circ 1'$

N.

57

