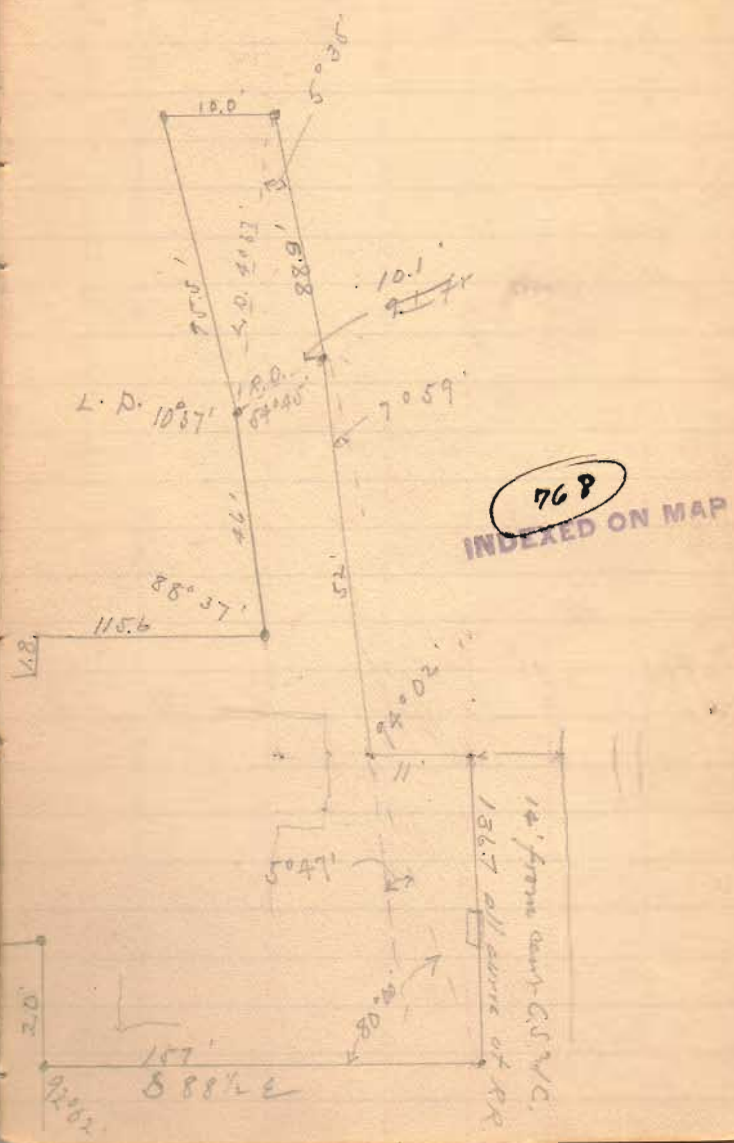


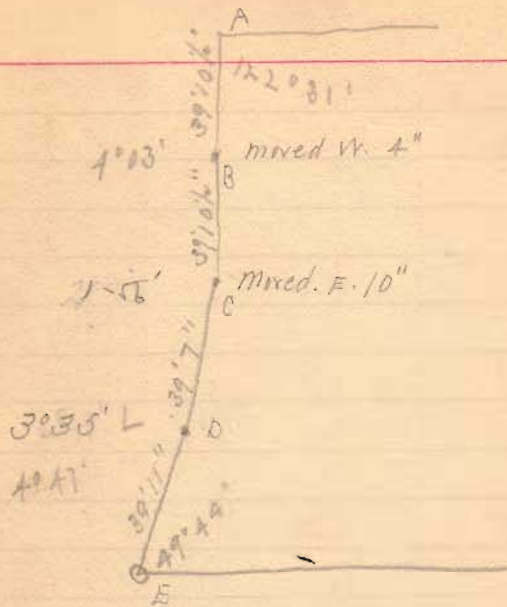
Riddli (R) Rutan
 49.5' to cent main track
 36.3 (at 17 <S)

Iron pipe, 2 old
 Range post
 2.0'
 92.00'



768
 INDEXED ON MAP

12' from center of RR
 1367' all curve of RR



- A - 33' 11" from cent Main Line Pig 7
- B - 35' 8"
- C - 36' 0"
- D - 36' 7"
- E - 36' 11"