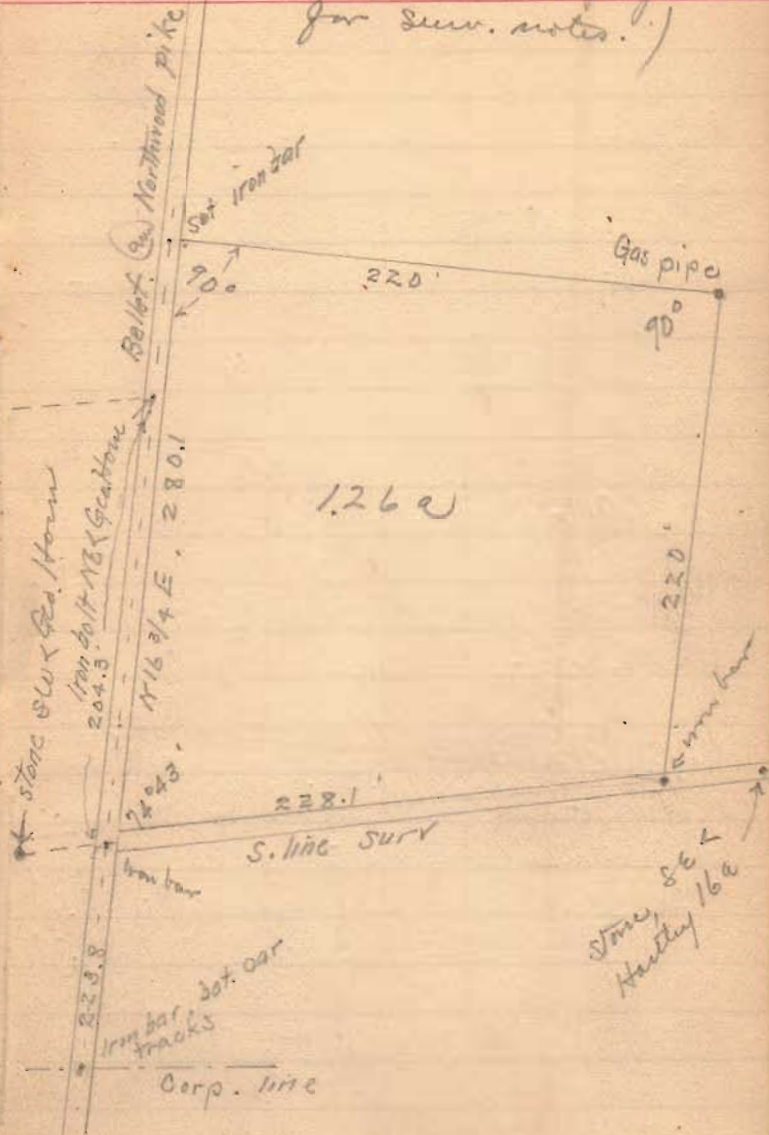


Hartley to Roach
 Survey 2873

55
 (Turn back one page
 for surv. notes.)

574

INDEXED ON MAP



Survey # 2873

1a. Hartley to Fred Roach.

Mich, 25, 1910

Stone at S.E. of Hartley 16' is 2.4" below surf. road.

Set pointed stone with porcelain tile immediately over old stone. Walnut stake at S. side of stone.

May - 5 - 1915

Survey for Vernon Dowell - S. side of road -

The above stone & walnut stake are in south wheel track, in line with wire fence north.

W.N. 6" Elm. in fence line - N - 18.0
6" Elm N.W. - 26.7

