

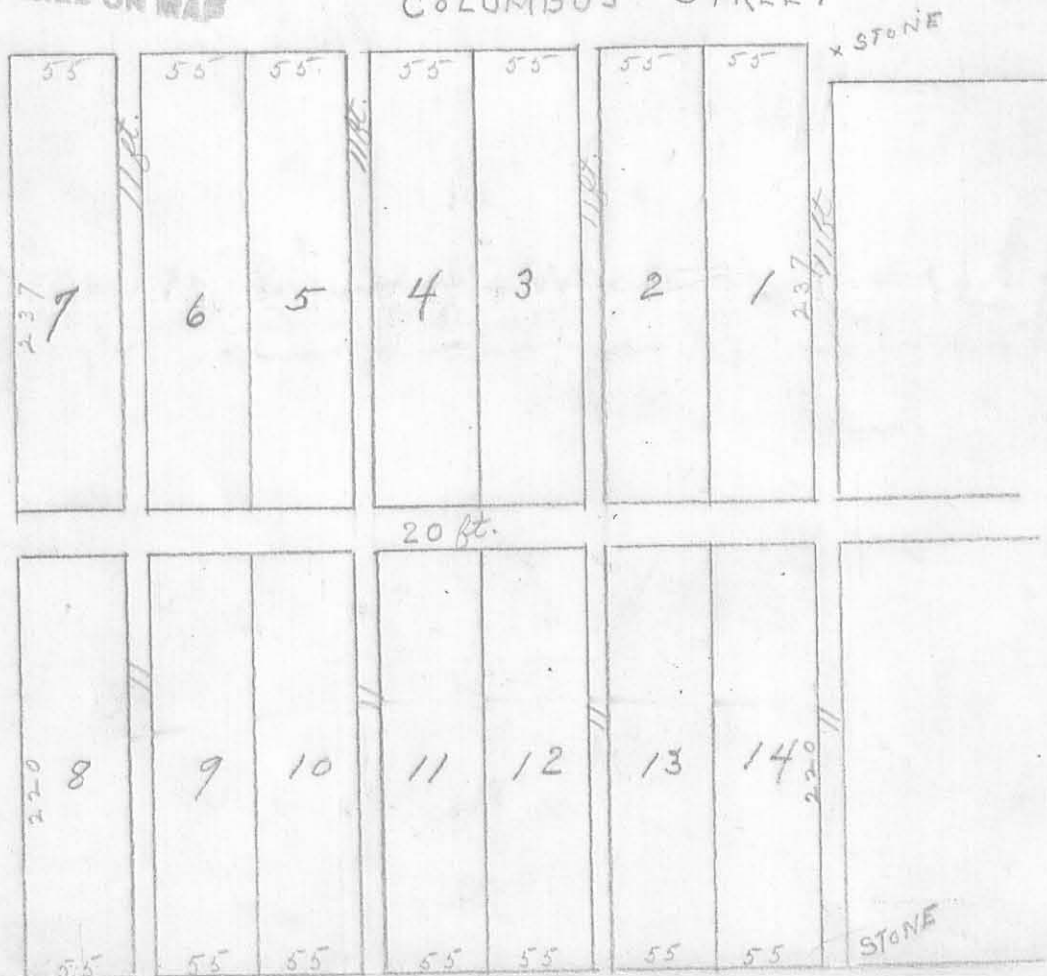
DAWSONS ADDITION

(904) IP

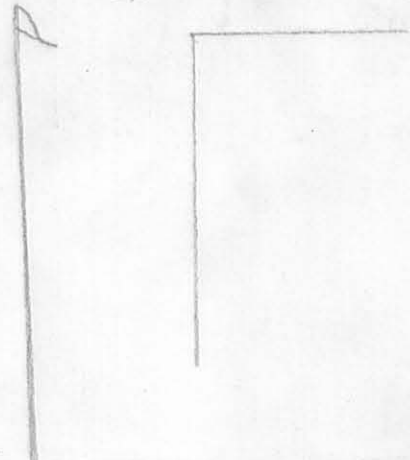
Bellefontaine
Columbus St.

INDEXED ON MAP

COLUMBUS STREET



N CHILLICOTHE



Beginning S. $2\frac{1}{2}^{\circ}$ W 30 ft and N. $87\frac{1}{2}^{\circ}$ W 11 ft from the N.E. corner of the N.W. $\frac{1}{4}$ Sec. 34 for the N.E. corner of Lot No. 1 Lots No. 1 to 7 inclusive are laid off fronting on the Bellefontaine and Port Jefferson Free Turnpike and running with its course N. $87\frac{1}{2}^{\circ}$ W 55 feet each extending back at rt. \angle 237 feet to an alley 20 feet wide Lots No. 8 to 14 inclusive front on a space 60 feet wide being an extension of Chillicothe Street Westward and are 55 X 220 feet. A stone is planted S. $87\frac{1}{2}^{\circ}$ E. from N.E. \angle of Lot No. 1 and one S. $87\frac{1}{2}^{\circ}$ E. 11 feet from S.E. corner of Lot No. 14

A. A. Harrison
County Surveyor
1845