

Survey for Shears.

Dist on Spring - 174.6 - 175.0

Dist on Hamilton 701.7 - 701.9

Dist on south alley 175.0 - 175.0

Dist. on Back alley 702.7 - 701.9

angle Hamilton + Spring $90^{\circ}02'$ Distance on alley back of Spring
174.6 - 175.0

Montgomery
Shears
Milo Richey

Lot 2205

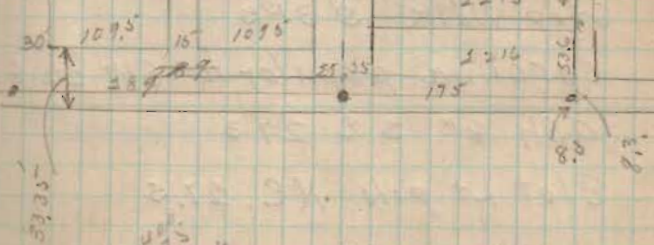
Aug - 13 1921

Spring - 175

1087

INDEXED ON MAP

25 35	50	50	50	15
25 35	2203	2204	2205	
	2206	2207	2208	2209
	2210	2211	2212	2213
	2214	2215	2216	



400
60
526
5136
25
538

701.7
511.6
168.1
50
18.1

Monuments

Hamilton + Colton

Iron pin

Hyd. NW - 405

Elet Lt pole NE - 17.0

S.W. Cor fda 2SF = NE 50.7

El 2+ stubb = SW - 244

Spring + Mad River

NE Cor riser lower step cement

S.W. 59.1 maple shade tree 4"

SW 41.2

Top Screw Hyd Sloping meas

NW 34.86

Cotton wood 28" NW 39'

Spring + Hamilton

Iron pin

Elet Lt pole SW 28.15

Bi Hom Mail Box Post SE 26.7

Top Screw Hyd N 21.75

Spring + Park

Cent of face of riser lower cement
step wall S 37.5

Carolina poplar 10" SW 22.6

Ash 8" SE 27.3

Elet Lt pole NE 27.5