

Grayson Survey  
Clegg St. Bellefontaine.

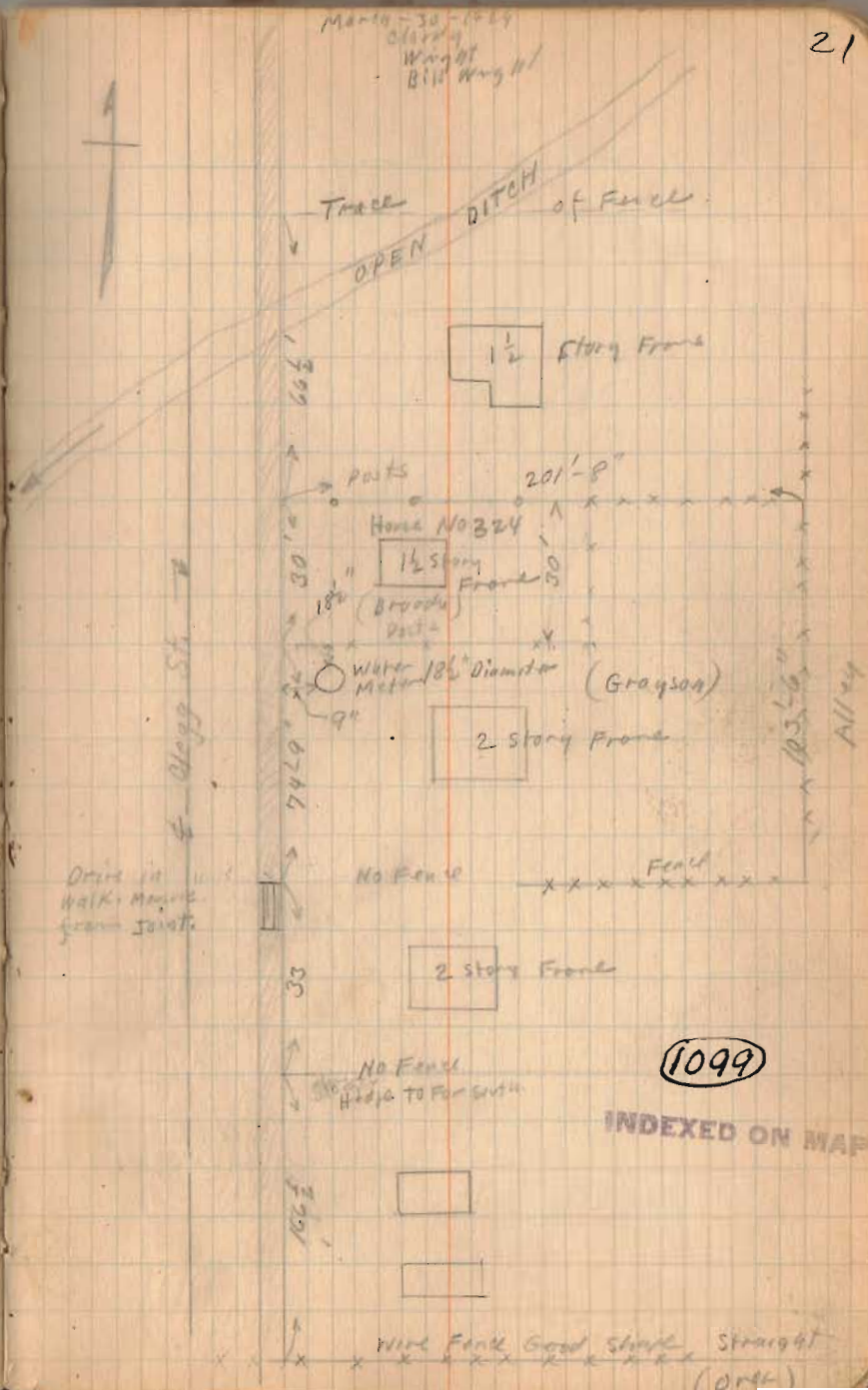
Note Grayson Land does not  
give any distances in Deed  
Vol. 67 Page 13.

Hard to  
Broady Deed. Vol. 131 Page 15  
100 X 30

See Page 23

Monument & Glegg by Garfield  
See Book 385 Page 6

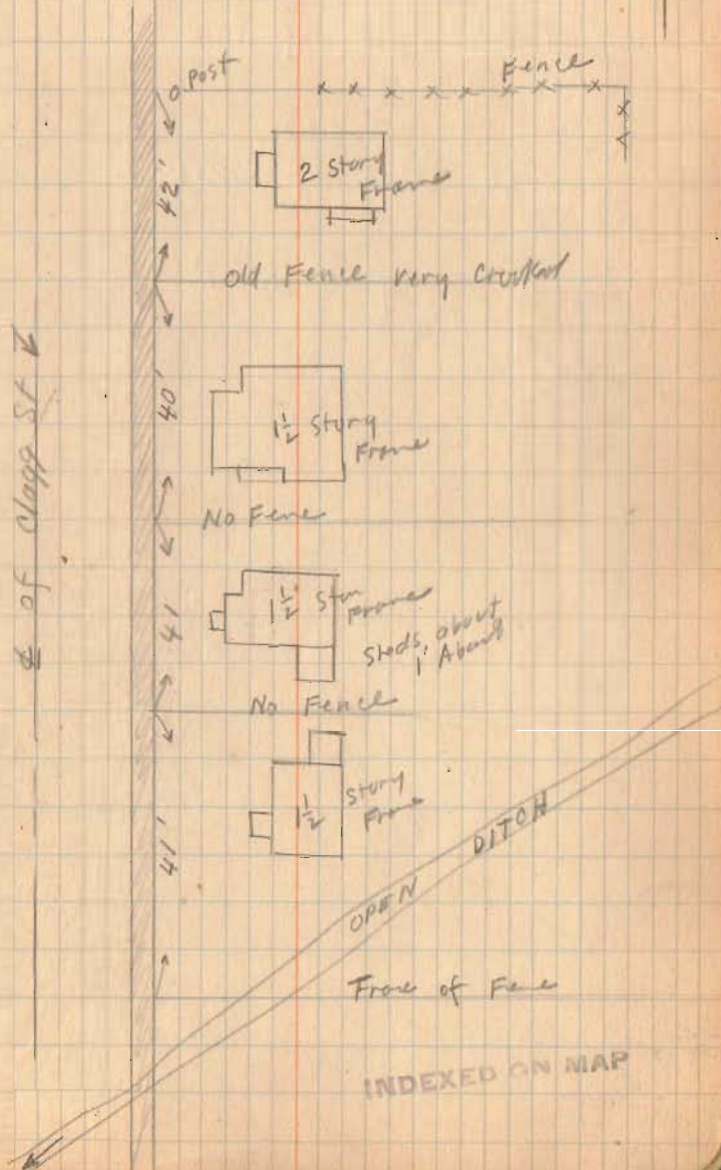
Monument & Glegg by Williams  
See Book 480 Page 10



Grayson Survey.

3-30-29

22



Grayson Survey.

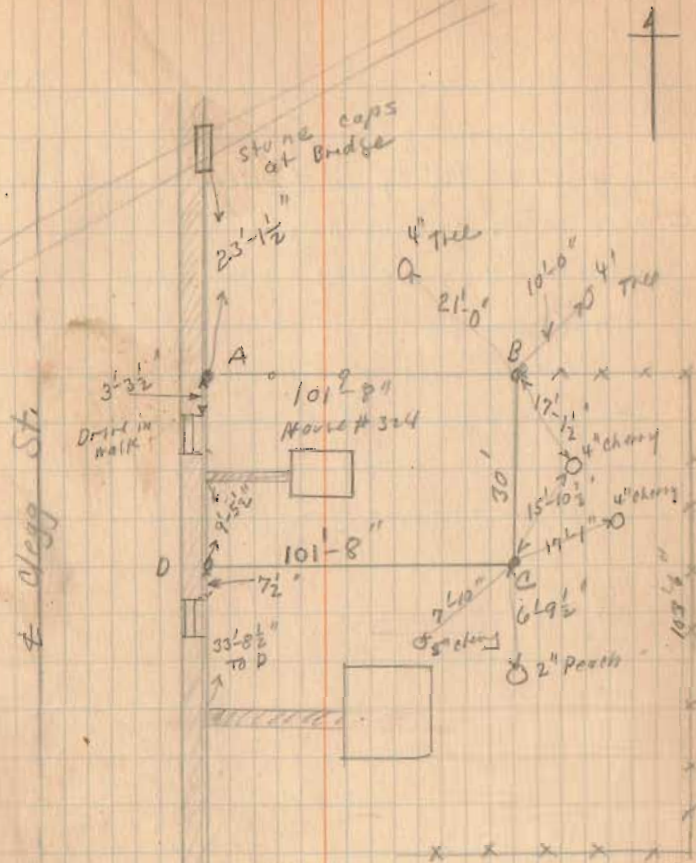
A. Hub. at edge of walk.

B. Iron Pipe.

C. " "

D. Hub at edge of walk.

Note edge of walk 1'-8" from property line.



INDEXED ON MAP

# Lee Surveying and Mapping Co., Inc.

Land Surveys • Topography • Subdivisions • Construction Layout

117 N. Madriver St.  
Bellefontaine OH 43311



Phone: (937) 593-7335  
Fax: (937) 593-7444  
surveys@lsminc.us

## RATLEFF 0.230 ACRE

Lying in Section 35, Town 4, Range 14, City of Bellefontaine, Lake Township, Logan County, Ohio.

Being all of the James W. Ratleff, Sr., 0.12 acre tract and 0.13 acre tract as deeded and described in Official Record 922, Page 729, No. 5, Tract I and Tract II of the Logan County Records of Deeds and being more particularly described as follows:

Commencing on a stone found in a monument box on the intersection of the center-lines of Garfield Avenue and Clagg Street.

THENCE, with the center-line of Clagg Street (30 feet wide), N 06°-30'-00"E, a distance of 846.46 feet to a point.

THENCE, with the north line of The Logan County Community Multi-Purpose Senior Center 0.39 acre tract (O.R. 5, Pg. 786, Tract Three) extended, S 89°-39'-50"E, a distance of 15.00 feet to a 5/8 inch iron rod set on the east right-of-way of Clagg Street at the TRUE POINT OF BEGINNING, passing a MAG nail set at 5.00 feet.

Thence, with the east right-of-way of Clagg Street, N 06°-30'-00"E, a distance of 82.50 feet to a 1-1/2 inch iron pipe found.

THENCE, with the south line of the Donn W. Volbrecht 0.1244 acre tract (O.R. 340, Pg. 019), S 83°-39'-50"E, a distance of 121.58 feet to a 5/8 inch iron rod set, passing a 1-1/2 inch iron pipe found at 119.88 feet.

THENCE, with the west lines of The Logan County Community Multi-Purpose Senior Center 0.25 acre tract and 0.13 acre tract (O.R. 5, Pg. 786, Tract Two and Tract One), S 06°-28'-30"W, a distance of 82.50 feet to a 5/8 inch iron rod set.

THENCE, with the north line of the aforesaid 0.39 acre tract, N 83°-39'-50"W, a distance of 121.62 feet to the point of beginning.

Containing 0.230 acre.

Property is subject to any and all previous easements and rights-of-way of record.

The basis for bearings is the center-line of Clagg Street, being N 06°-30'-00"E, and all other bearings are from angles and distances measured in a field survey by Lee Surveying and Mapping Co., Inc. on November 19, 2010.

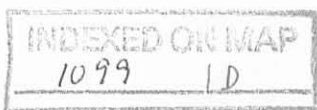
Description prepared by:



ORIGINAL STAMP IN GREEN

William K. Bruce  
Professional Surveyor 7437  
November 24, 2010

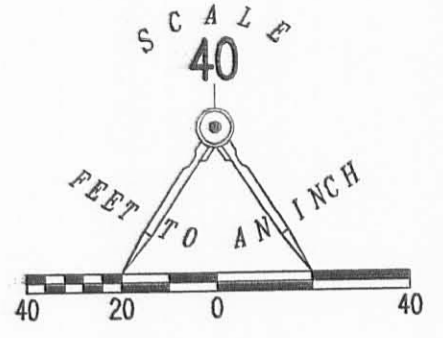
50621110



REC'D 12-2-10 SML/BK

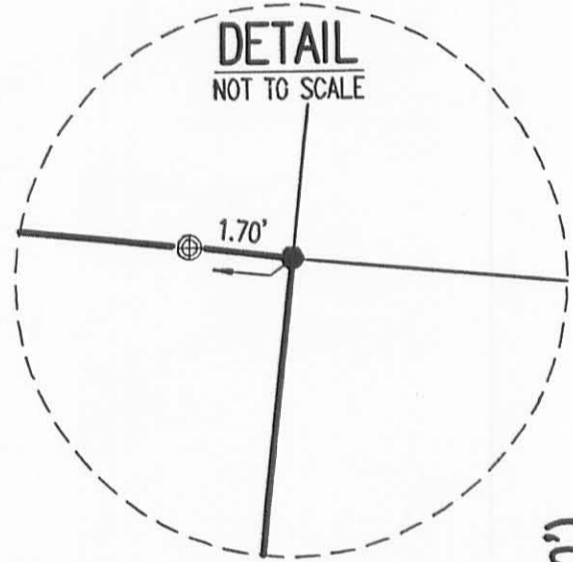
WEST WILLIAMS AVENUE (60')

WEST WILLIAMS AVENUE (34')



LEGEND:

- ☒ STONE FOUND
- ⊙ 1 INCH IRON BAR FOUND
- ⊕ 1-1/2 INCH IRON PIPE FOUND
- ⊗ 1-1/4 INCH IRON PIPE FOUND
- ⊙ 1 INCH IRON PIPE FOUND
- 5/8 INCH IRON ROD FOUND
- MAG NAIL SET
- 5/8 INCH IRON ROD SET WITH PLASTIC I.D. CAP STAMPED "LSM 7437"

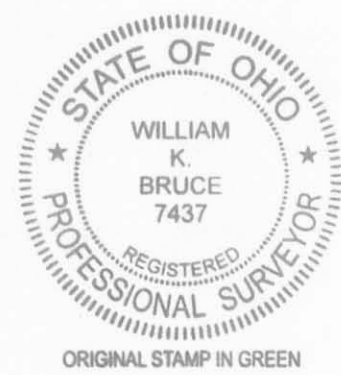


CLAGG STREET (30')



RETRACEMENT SURVEY OF THE  
 JAMES W. RATLEFF, SR.  
 0.12 ACRE TRACT  
 AND 0.13 ACRE TRACT  
 OFFICIAL RECORD 922, PAGE 729  
 NO. 5, TRACT I AND TRACT II  
 SECTION 35, TOWN 4, RANGE 14  
 CITY OF BELLEFONTAINE  
 LAKE TOWNSHIP  
 LOGAN COUNTY, OHIO

SURVEYED BY:



*William K. Bruce*  
 WILLIAM K. BRUCE  
 PROFESSIONAL SURVEYOR 7437  
 NOVEMBER 19, 2010

COPYRIGHT 2010 BY:  
 LEE SURVEYING & MAPPING CO., INC.  
 117 North Madriver Street  
 BELLEFONTAINE, OHIO 43311  
 (937) 593-7335  
 surveys@lsmcinc.us  
 KSS 01110 50621110 L-5062-3

2 WORKING DAYS  
**BEFORE YOU DIG**  
 CALL TOLL FREE 800-362-2764  
 OHIO UTILITIES PROTECTION SERVICE

INDEXED ON MAP  
1099 1P