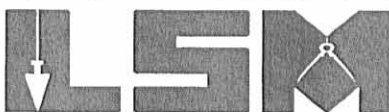


Lee Surveying and Mapping Co., Inc.

Land Surveys • Topography • Subdivisions • Construction Layout

117 N. Madriver St.
Bellefontaine OH 43311



Phone: (937) 593-7335
Fax: (937) 593-7444

1975-2005 - 30 YEARS OF EXCELLENCE

**M.Y. INSURANCE AGENCY, INC.
TRACT A
0.187 ACRE**

Lying in the City of Bellefontaine, Lake Township, Logan County, Ohio.

Being part of Lots 2644, 2645 and 2646 of Iron City Heights as dedicated in Plat Cabinet A, Slide 55 of the Logan County Records of Plats and being more particularly described as follows:

Beginning at a 5/8 inch iron rod set at the northwest corner of Lot 2648 of Iron City Heights on the south right-of-way of Prospect Avenue (40 feet wide).

THENCE, with the north line of Lots 2647 & 2646 and the south right-of-way of Prospect Avenue, N 86°-45'-51"W, a distance of 67.98 feet to a 5/8 inch iron rod set at the TRUE POINT OF BEGINNING.

THENCE, S 4°-00'-53"W, a distance of 119.79 feet to a 5/8 inch iron rod set.

THENCE, with the north line of a vacated 10 feet wide alley (Vol. 352, Pg. 366), N 86°-46'-00"W, a distance of 67.78 feet to a 5/8 inch iron rod set 23.00 feet west of the southwest corner of Lot 2645.

THENCE, parallel with the east line of Lot 2644, N 3°-55'-06"E, a distance of 119.79 feet to a 5/8 inch iron rod set.

THENCE, with the north line of Lots 2644 and 2645 and the south right-of-way of Prospect Avenue, S 86°-45'-51"E, a distance of 67.98 feet to the point of beginning.

Containing 0.187 acre.

The basis for bearings is the center-line of Prospect Avenue, being S 86°-45'-51"E, and all other bearings are from angles and distances measured in a field survey by Lee Surveying and Mapping Co., Inc. on February 22, 2005, Revised March 7, 2005.

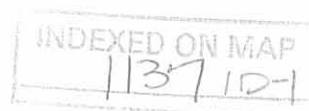


ORIGINAL STAMP IN GREEN

Description prepared by:

Jeffrey I. Lee
Professional Surveyor 6359
March 7, 2005

L-3978



REC'D 3-9-05 SWM DLK

Lee Surveying and Mapping Co., Inc.

Land Surveys • Topography • Subdivisions • Construction Layout



117 N. Madriver St.
Bellefontaine OH 43311

Phone: (937) 593-7335
Fax: (937) 593-7444

1975-2005 - 30 YEARS OF EXCELLENCE

M.Y. INSURANCE AGENCY, INC.

TRACT B

0.187 ACRE

Lying in the City of Bellefontaine, Lake Township, Logan County, Ohio.

Being part of Lots 2646 and 2647 of Iron City Heights as dedicated in Plat Cabinet A, Slide 55 of the Logan County Records of Plats and being more particularly described as follows:

Beginning at a 5/8 inch iron rod set at the northwest corner of Lot 2648 of Iron City Heights on the south right-of-way of Prospect Avenue (40 feet wide).

THENCE, with the west line of Lot 2648, S 4°-06'-50"W, a distance of 119.79 feet to a 5/8 inch iron rod set.

THENCE, with the north line of a vacated 10 feet wide alley (Vol. 352, Page 366), N 86°-46'-00"W, a distance of 67.78 feet to a 5/8 inch iron rod set.

THENCE, N 4°-00'-53"E, a distance of 119.79 feet to a 5/8 inch iron rod set.

THENCE, with the north line of Lots 2646 and 2647 and the south right-of-way of Prospect Avenue, S 86°-45'-51"E, a distance of 67.98 feet to the point of beginning.

Containing 0.187 acre.

The basis for bearings is the center-line of Prospect Avenue, being S 86°-45'-51"E, and all other bearings are from angles and distances measured in a field survey by Lee Surveying and Mapping Co., Inc. on February 22, 2005, Revised March 7, 2005.

Description prepared by:



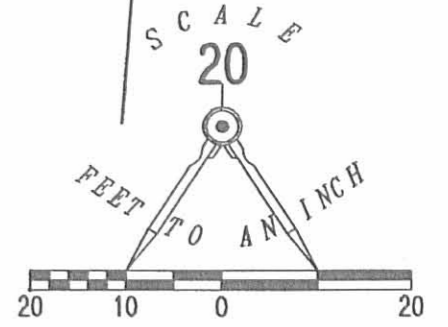
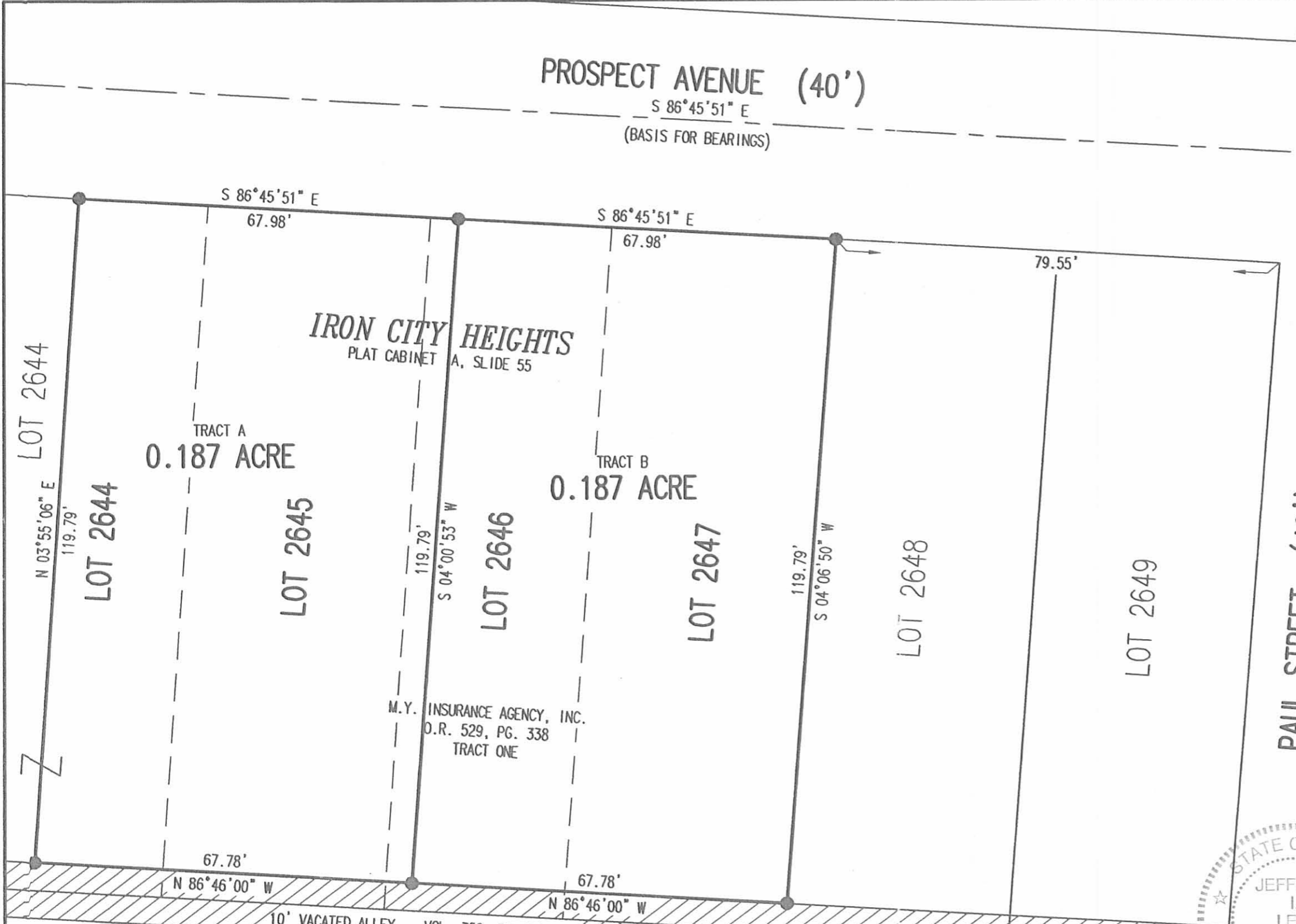
Jeffrey I. Lee
Professional Surveyor 6359
March 7, 2005

L-3978

ORIGINAL STAMP IN GREEN

INDEXED ON MAP
1137 1D-2

REC'D 3-9-05 EMM BK

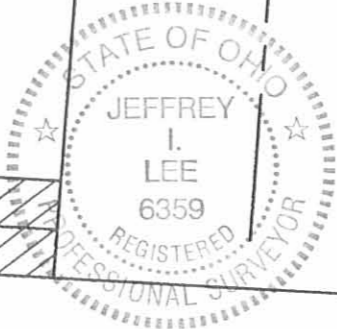


LEGEND:
 ● 5/8 INCH IRON ROD SET
 ⊙ 2 INCH IRON PIPE FOUND

**SURVEY OF TWO TRACTS OUT OF THE
 M.Y. INSURANCE AGENCY, INC.
 PART OF LOTS 2644, 2645,
 2646 AND 2647
 IRON CITY HEIGHTS
 PLAT CABINET A, SLIDE 55
 OFFICIAL RECORD 529, PAGE 338
 TRACT ONE
 CITY OF BELLEFONTAINE
 LAKE TOWNSHIP
 LOGAN COUNTY, OHIO**

SURVEYED BY:

Jeffrey I. Lee
 JEFFREY I. LEE
 PROFESSIONAL SURVEYOR 6359
 FEBRUARY 22, 2005
 REVISED MARCH 7, 2005



ORIGINAL STAMP IN GREEN

COPYRIGHT 2005 BY:
LEE SURVEYING & MAPPING CO., INC.
 117 North Madriver Street
 BELLEFONTAINE, OHIO 43311
 (937) 593-7335

2 WORKING DAYS
BEFORE YOU DIG
 CALL TOLL FREE **800-362-2764**
 OHIO UTILITIES PROTECTION SERVICE.

M.Y. INSURANCE AGENCY, INC.
 0.36 ACRE
 O.R. 529, PG. 338
 TRACT TWO

RODNEY E. DAUM
 0.04 ACRE
 O.R. 457, PG. 49
 TRACT III

KSR D0205 3978035 L-3978-3

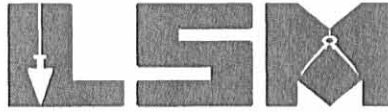
INDEXED ON MAP
 1137 1P

REC'D 2-24-05 SML OK

Lee Surveying and Mapping Co., Inc.

Land Surveys • Topography • Subdivisions • Construction Layout

117 N. Madriver St.
Bellefontaine OH 43311



Phone: (937) 593-7335
Fax: (937) 593-7444

1975-2005 - 30 YEARS OF EXCELLENCE

M.Y. INSURANCE AGENCY, INC.

**TRACT A
0.194 ACRE**

Lying in the City of Bellefontaine, Lake Township, Logan County, Ohio.

Being all of Lot 2645 and part of Lots 2644 and 2646 of Iron City Heights as dedicated in Plat Cabinet A, Slide 55 of the Logan County Records of Plats and being more particularly described as follows:

Beginning at a 5/8 inch iron rod set at the northwest corner of Lot 2648 of Iron City Heights on the south right-of-way of Prospect Avenue (40 feet wide).

THENCE, with the north line of Iron City Heights and the south right-of-way of Prospect Avenue, N 86°-45'-51"W, a distance of 67.98 feet to a 5/8 inch iron rod set at the TRUE POINT OF BEGINNING.

THENCE, S 4°-00'-53"W, a distance of 124.79 feet to a 5/8 inch iron rod set.

THENCE, with the center-line of a vacated 10 feet wide alley (Vol. 352, Pg. 366), N 86°-46'-00"W, a distance of 67.77 feet to a 5/8 inch iron rod set 23.00 feet west of the southwest corner of Lot 2645.

THENCE, parallel with the east line of Lot 2644, N 3°-55'-06"E, a distance of 124.79 feet to a 5/8 inch iron rod set.

THENCE, with the north line of Lots 2644 and 2645 and the south right-of-way of Prospect Avenue, S 86°-45'-51"E, a distance of 67.98 feet to the point of beginning.

Containing 0.194 acre.

The basis for bearings is the center-line of Prospect Avenue, being S 86°-45'-51"E, and all other bearings are from angles and distances measured in a field survey by Lee Surveying and Mapping Co., Inc. on February 22, 2005.

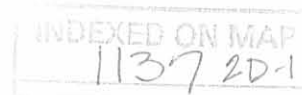


ORIGINAL STAMP IN GREEN

Description prepared by:

Jeffrey I. Lee
Jeffrey I. Lee
Professional Surveyor 6359
February 23, 2005\

L-3978



REC'D 2-24-05 8MM OK

Lee Surveying and Mapping Co., Inc.

Land Surveys • Topography • Subdivisions • Construction Layout

117 N. Madriver St.
Bellefontaine OH 43311



Phone: (937) 593-7335
Fax: (937) 593-7444

1975-2005 - 30 YEARS OF EXCELLENCE

M.Y. INSURANCE AGENCY, INC.

**TRACT B
0.194 ACRE**

Lying in the City of Bellefontaine, Lake Township, Logan County, Ohio.

Being all of Lot 2647 and part of Lot 2646 of Iron City Heights as dedicated in Plat Cabinet A, Slide 55 of the Logan County Records of Plats and being more particularly described as follows:

Beginning at a 5/8 inch iron rod set at the northwest corner of Lot 2648 of Iron City Heights on the south right-of-way of Prospect Avenue (40 feet wide).

THENCE, with the west line of Lot 2648, S 4°-06'-50"W, a distance of 124.79 feet to a 5/8 inch iron rod set.

THENCE, with the center-line of a vacated 10 feet wide alley (Vol. 352, Page 366), N 86°-46'-00"W, a distance of 67.77 feet to a 5/8 inch iron rod set.

THENCE, N 4°-00'-53"E, a distance of 124.79 feet to a 5/8 inch iron rod set.

THENCE, with the north line of Lots 2646 and 2647 and the south right-of-way of Prospect Avenue, S 86°-45'-51"E, a distance of 67.98 feet to the point of beginning.

Containing 0.194 acre.

The basis for bearings is the center-line of Prospect Avenue, being S 86°-45'-51"E, and all other bearings are from angles and distances measured in a field survey by Lee Surveying and Mapping Co., Inc. on February 22, 2005.



ORIGINAL STAMP IN GREEN

Description prepared by:

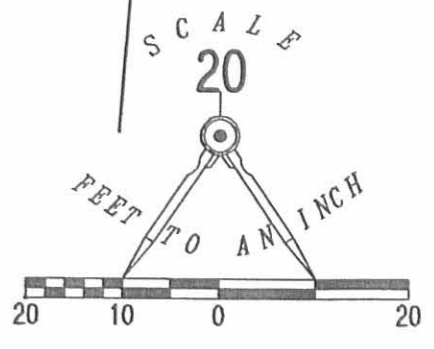
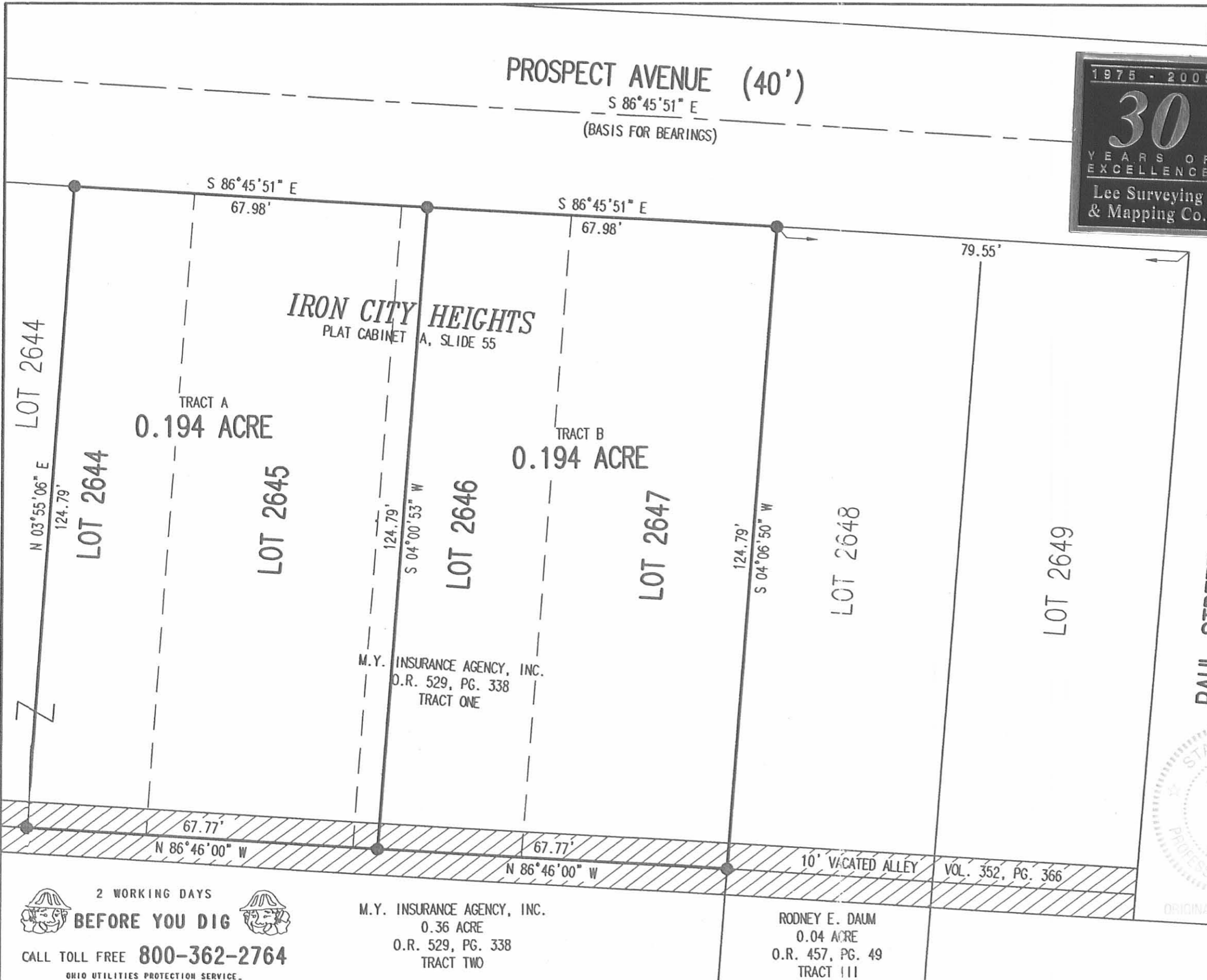
A handwritten signature in black ink, appearing to read 'J. Lee', written over the typed name and title.

Jeffrey I. Lee
Professional Surveyor 6359
February 23, 2005

L-3978

INDEXED ON MAP
1137 2D-2

REC'D 2-24-05 SMM OK



- LEGEND:**
- 5/8 INCH IRON ROD SET
 - ⊙ 2 INCH IRON PIPE FOUND

**SURVEY OF TWO TRACTS OUT OF THE
M.Y. INSURANCE AGENCY, INC.
PART OF LOT 2644 AND ALL OF
LOTS 2645, 2646 AND 2647
IRON CITY HEIGHTS
PLAT CABINET A, SLIDE 55
OFFICIAL RECORD 529, PAGE 338
TRACT ONE
CITY OF BELLEFONTAINE
LAKE TOWNSHIP
LOGAN COUNTY, OHIO**



SURVEYED BY:
Jeffrey I. Lee
JEFFREY I. LEE
PROFESSIONAL SURVEYOR 6359
FEBRUARY 22, 2005

COPYRIGHT 2005 BY:
LEE SURVEYING & MAPPING CO., INC.
117 North Madriver Street
BELLEFONTAINE, OHIO 43311
(937) 593-7335

**2 WORKING DAYS
BEFORE YOU DIG**
CALL TOLL FREE **800-362-2764**
OHIO UTILITIES PROTECTION SERVICE.

INDEXED ON MAP
1137

Iron City Heights Survey

SEC 33 T4 R14
1137

(1137) SR
INDEXED ON MAP



Iron City Heights
Race from Band
03.

Present & from the Dist
3571.70

26.47
25.61
17.47
SE CORNER
0.11

16715
17001
17001
17001
17001
17001

Set NW 1906
16715
17001
17001
17001
17001
17001

240
44.7
35
16.23
355 x 9.5
Stained 55 by 5 down