

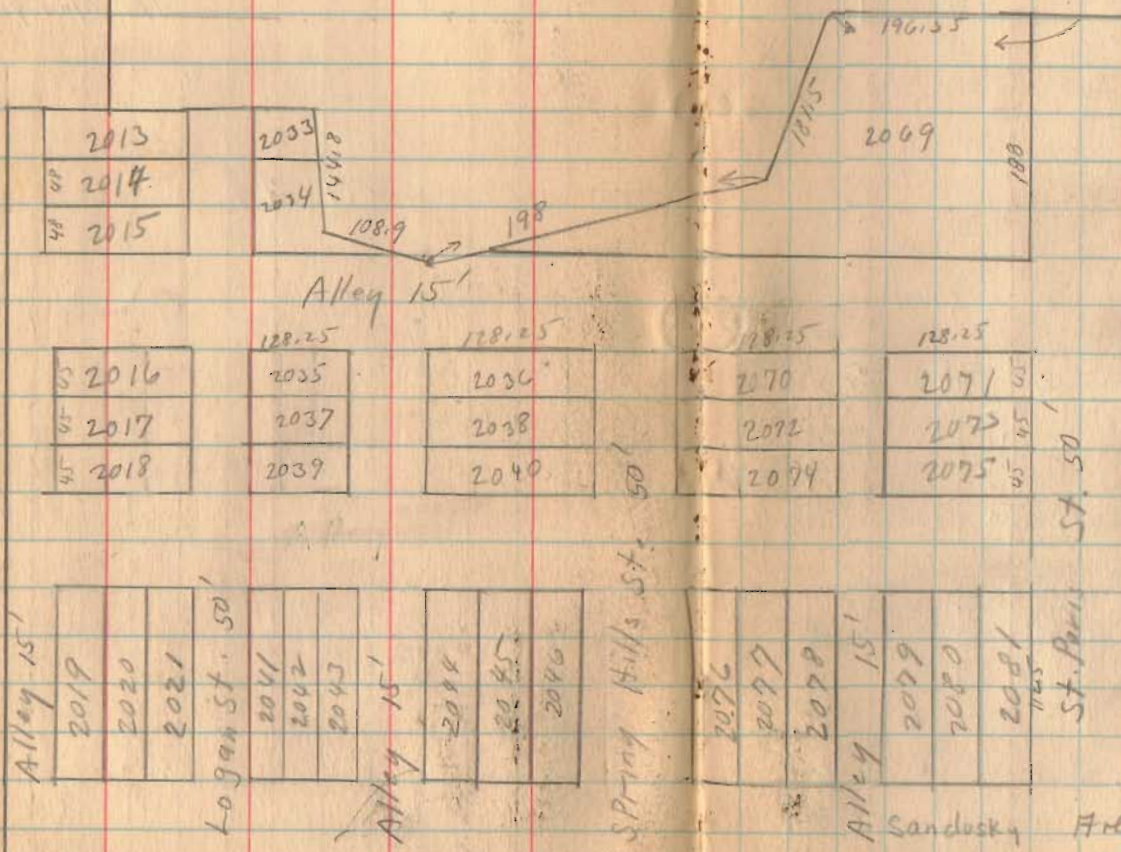
1181
INDEXED ON MAP

March 3, 1930
Windy - Snow Yes,
Bright
Sykes

Stone Quarry Bellefontaine
Surrey for Fred Hamilton



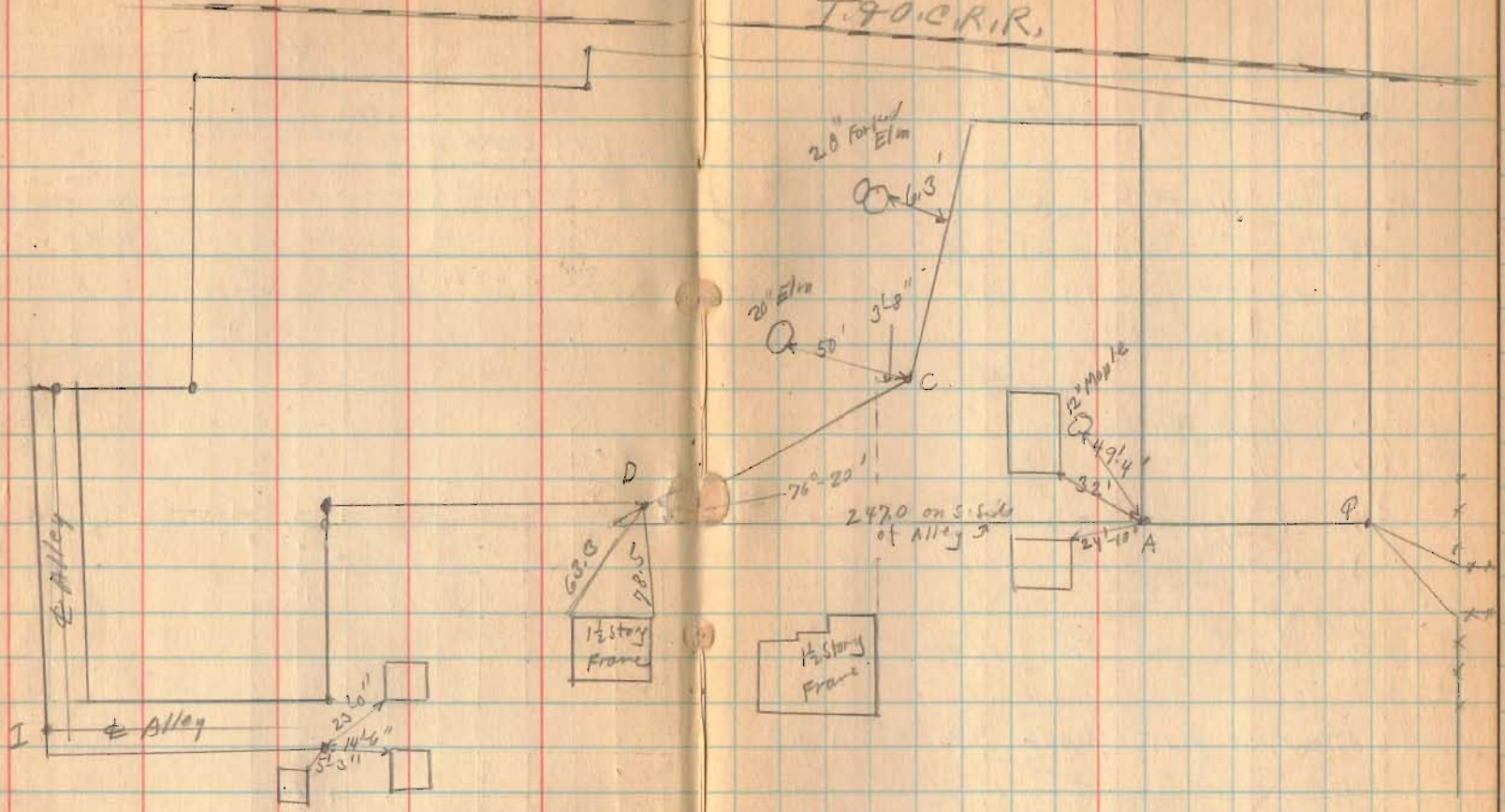
Woodbury Knight Addition see plot book page 35
see Wonders field Notes Book 265 Page
see Book & Page 318
Lots shown as on Plat.
see T190.c. Map Drawer A-39



see Surrey for State
Garage by Montgomery
Book 418 Page 54
Also Surrey 900

20' & 15' of Terry St.

T. 90. C. R. R.





Lee Surveying and Mapping Co., Inc.



Farm Surveys • Lot Surveys • Topography • Subdivisions • Construction Layout

117 NORTH MADRIVER STREET
BELLEFONTAINE, OHIO 43311

(937) 593-7335
FAX (937) 593-7444

INLAND PRODUCTS INC. 15.462 ACRES TRACT I

Lying in the City of Bellefontaine, Section 5, Town 3, Range 14, Harrison Township, Logan County, Ohio.

Being all of the part of the remainder of the original 9.57 acre first tract, original 3 acre second tract, 2.9 acre third tract, 0.17 acre fourth tract, and the lots and vacated street of the fifth tract of the Inland Product Incorporated lands and lots as deeded and described in Volume 196, Page 430, of the Logan County Records of Deeds and being more particularly described as follows:

Beginning at a 1" iron rod in a monument box found on the east line of Section 5, the east line of Harrison Township, and the center-line of Troy Street (60 feet wide) at the intersection with the center-line of Garfield Avenue.

THENCE, with the east line of Section 5, the east line of Harrison Township, and ten feet west of the center-line of Troy Street, S 5°-28'-30" W, a distance of 135.98 feet to a 5/8 inch iron rod set at the TRUE POINT OF BEGINNING.

THENCE, with the east line of Section 5, the east line of Harrison Township, and ten feet west of center-line of Troy Street, S 5°-28'-30" W, a distance of 568.28 feet to a 5/8 inch iron rod set.

THENCE, with the right-of-way of State Highway 47, also Sandusky Avenue, the following five (5) courses:

N 84°-36'-02" W, a distance of 30.03 feet to a 5/8 inch iron rod set, passing a 5/8 inch iron rod set at 20.00 feet.

S 5°-34'-02" W, a distance of 12.00 feet to a 5/8 inch iron rod set.

S 50°-24'-33" W, a distance of 21.22 feet to a 5/8 inch iron rod set.

N 84°-35'-50" W, a distance of 218.02 feet to a 5/8 inch iron rod set.

N 42°-14'-56" W, a distance of 13.28 feet to a 5/8 inch iron rod set on the east right-of-way of St. Paris Street.

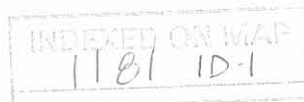
THENCE, with the east right-of-way of St. Paris Street (50 feet wide), N 5°-31'-30" E, a distance of 450.05 feet to a 5/8 inch iron rod set.

THENCE, with the north line of St. Paris Street, and the north line of Lot 2069 of the Woolman and Knight Addition to Bellefontaine (Plat Book A, Page 206 & 207), N 82°-48'-30" W, a distance of 221.37 feet to a 5/8 inch iron rod set.

THENCE, with the west line of Lot 2069, S 19°-11'-30" W, a distance of 181.50 feet to a 5/8 inch iron rod set.

THENCE, with a northerly line of Lot 2069, and the north line of Springhill Street (50 feet wide), S 87°-10'-43" W, a distance of 123.92 feet to a 5/8 inch iron rod set.

THENCE, with the north line of a 15 feet wide alley, N 84°-42'-26" W, a distance of 128.23 feet to a 5/8 inch iron rod set.





Lee Surveying and Mapping Co., Inc.



Farm Surveys • Lot Surveys • Topography • Subdivisions • Construction Layout

117 NORTH MADRIVER STREET
BELLEFONTAINE, OHIO 43311

(937) 593-7335
FAX (937) 593-7444

THENCE, with the west line of a 15 feet wide alley, S 5°-25'-30" W, a distance of 150.10 feet to a 5/8 inch iron rod set.

THENCE, with the north line of a 15 feet wide alley, N 84°-42'-18" W, a distance of 314.70 feet to a 5/8 inch iron rod set.

THENCE, with the lines of the Board of Education, Bellefontaine City School District 8.98 acre tract (Vol. 234, Page 43), the following two courses:

N 5°-59'-38" E, a distance of 311.50 feet to a 5/8 iron rod set.

S 85°-35'-54" E, a distance of 87.30 feet to a 5/8 inch iron rod set.

THENCE, with the east line of the said 8.98 acre tract, the east line of the remainder of the Marian A. Idle original 118.25 acre tract (O.R. 85, Pg. 21), and a line of the Dayton Power and Light 10.19 acre tract (O.R. 329, Pg. 713), N 5°-15'-13" E, a distance of 617.22 feet to a 5/8 inch iron rod set, passing a 5/8 inch iron rod found at 587.62 feet.

THENCE, with the lines of the said 10.19 acre tract, the following three (3) courses:

With a curve to the right having a central angle of 1°-07'-56", a radius of 10078.00 feet, and arc length of 199.17 feet, and a chord bearing S 65°-18'-44" E, a distance of 199.17 feet to a 5/8 inch iron rod set.

With a curve to the right having a central angle of 1°-32'-21", a radius of 3336.41 feet, an arc length of 89.62 feet, and a chord bearing S 63°-58'-36" E, a distance of 89.62 feet to a 5/8 inch iron rod set.

N 26°-47'-30" E, a distance of 18.00 feet to a 5/8 inch iron rod set.


THENCE, with the southerly lines of the Penn Central Corp. tract, a curve to the right having a central angle of 7°-48'-39", a radius of 3354.41 feet, an arc length of 457.29 feet, and a chord bearing S 59°-18'-06" E, a distance of 456.94 feet to a 5/8 inch iron rod set.

THENCE, continuing with the southerly line of the Penn Central Corp. tract, S 55°-24'-25" E, a distance of 369.26 feet to the point of beginning, passing a 5/8 inch iron rod set at 346.37 feet.

Containing 15.462 acres, 2.053 acre is within lots and vacated street, and 0.263 acre is within the right-of-way of Troy Street.

The basis for bearings is the east line of Section 5 being S 5°-28'-30" W, and all other bearings are from angles and distances measured in a field survey by Lee Surveying and Mapping Co., Inc. of December 3, 1997.

Description prepared by:


Jeffrey I. Lee
Professional Surveyor 6359
December 15, 1997



L-2593

ORIGINAL STAMP IN GREEN

INDEXED ON MAP
1181 1D-2

REC'D 1-27-98 SMY OK



Lee Surveying and Mapping Co., Inc.



Farm Surveys • Lot Surveys • Topography • Subdivisions • Construction Layout

117 NORTH MADRIVER STREET
BELLEFONTAINE, OHIO 43311

(937) 593-7335
FAX (937) 593-7444

INLAND PRODUCTS INC. 0.286 ACRE TRACT II

Lying in the City of Bellefontaine, Section 5, Town 3, Range 14, Harrison Township, Logan County, Ohio.

Being part of the Inland Products, Inc. original 9.57 acre tract as deeded and described in Volume 196, Page 430, First Tract of the Logan County Records of Deeds and being more particularly described as follows:

Beginning at a 5/8 inch iron rod found at the intersection of center-lines of Garfield Avenue (60 feet wide at this location) and Limestone Street (40 feet wide).

THENCE, with the center-line of Garfield Avenue N 53°-50'-30" W, a distance of 130.86 feet to a MAG nail set at the TRUE POINT OF BEGINNING.

THENCE, S 36°-09'-30" W, a distance of 30.00 feet to a 5/8 inch iron rod found.

THENCE, with the right-of-way of Garfield Avenue (variable width) and the northerly line of the Kemp G. Carter III 17.460 acre tract (O.R. 241, Pg. 388), N 53°-50'-30" W, a distance of 226.50 feet to a 5/8 inch iron rod set.

THENCE, N 21°-45'-50" E, a distance of 83.43 feet to a MAG nail set on the center-line of Garfield Avenue.

THENCE, with the original center-line of Garfield Avenue and the northerly property line of the said 9.57 acre tract the following two courses:

S 41°-29'-40" E, a distance of 237.60 feet to a MAG nail set.

S 53°-50'-30" E, a distance of 15.14 feet to the point of beginning.

Containing 0.286 acre all of which is within the right-of-way of Garfield Avenue.

The basis for bearings is the east line of Section 5 being S 5°-28'-30" W, and all other bearings are from angles and distances measured in a field survey by Lee Surveying and Mapping Co., Inc. of December 3, 1997.

Description prepared by:



ORIGINAL STAMP IN GREEN

Jeffrey I. Lee
Jeffrey I. Lee
Professional Surveyor 6359
December 15, 1997

L-2593

INDEXED ON MAP
1181 1D-3



Lee Surveying and Mapping Co., Inc.



Farm Surveys • Lot Surveys • Topography • Subdivisions • Construction Layout

117 NORTH MADRIVER STREET
BELLEFONTAINE, OHIO 43311

(937) 593-7335
FAX (937) 593-7444

INLAND PRODUCTS INC. 0.010 ACRE TRACT III

Lying in the City of Bellefontaine, Section 5, Town 3, Range 14, Harrison Township, Logan County, Ohio.

Being part of the Inland Products, Inc. original 9.57 acre tract as deeded and described in Volume 196, Page 430, First Tract of the Logan County Records of Deeds and being more particularly described as follows:

Beginning at a 5/8 inch iron rod found at the intersection of center-lines of Garfield Avenue (60 feet wide at this location) and Limestone Street (40 feet wide).

THENCE, with the center-line of Garfield Avenue N 53°-50'-30" W, a distance of 130.86 feet to a MAG nail set.

THENCE, S 36°-09'-30" W, a distance of 30.00 feet to a 5/8 inch iron rod found.

THENCE, with the right-of-way of Garfield Avenue (variable width) and the northerly line of the Kemp G. Carter III 17.460 acre tract (O.R. 241, Pg. 388), N 53°-50'-30" W, a distance of 226.50 feet to a 5/8 inch iron rod set.

THENCE, through the said 17.460 acre tract, S 21°-45'-50" W, a distance of 96.18 feet to a 5/8 inch iron rod set at the TRUE POINT OF BEGINNING.

THENCE, with the south line of the said 17.460 acre tract, S 53°-34'-52" E, a distance of 81.45 feet to a 5/8 inch iron rod found.

THENCE, with the north line of the Penn Central Corp. tract, a curve to the left having a central angle of 1°-20'-33", a radius of 3384.41 feet, an arc length of 79.29 feet, and a chord bearing N 61°-52'-27" W, a distance of 79.29 feet to a 5/8 inch iron rod set.

THENCE, N 21°-45'-50" E, a distance of 11.82 feet to the point of beginning.

Containing 0.010 acre.

The basis for bearings is the east line of Section 5 being S 5°-28'-30" W, and all other bearings are from angles and distances measured in a field survey by Lee Surveying and Mapping Co., Inc. of December 3, 1997.

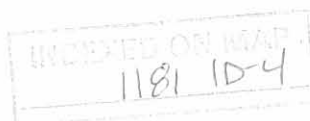
Description prepared by:



Jeffrey I. Lee
Jeffrey I. Lee
Professional Surveyor 6359
December 15, 1997

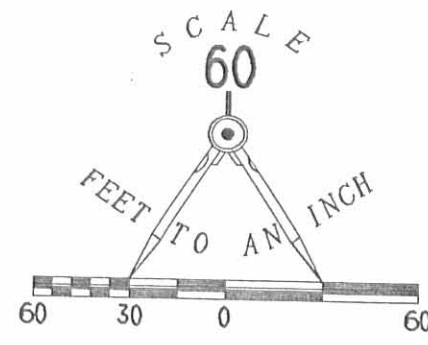
L-2593

ORIGINAL STAMP IN GREEN



COORDINATES AND ELEVATIONS FOR MONITORING WELLS AND CONCRETE & BRASS DISC MONUMENTS ARE FROM GPS OBSERVATIONS RECORDED BY HOCKADEN AND ASSOCIATES, INC. 11/23/97. BASED UPON MONUMENTATION SET BY THOMAS ENGINEERING 1962.

NAD27 OHIO NORTH ZONE



LEGEND

- 5/8" IRON ROD SET
- 5/8" IRON ROD FOUND
- ⊠ 1" IRON ROD IN MONUMENT BOX FOUND
- ⊕ 1.75" IRON PIPE FOUND
- ⊕ 1" BOLT FOUND
- ⊕ 1" IRON ROD FOUND
- ⊙ MAG NAIL SET
- ⊙ CONCRETE POST FOUND
- ⊕ RAILROAD RAIL ON END FOUND
- ⊙ CONCRETE AND BRASS DISC MONUMENT SET
- ⊙ MONITORING WELL

REFERENCES

LOGAN COUNTY MAPROOM FILES:
R-36, R-48, L-41, R-1181
PLAT BOOK A, PAGE 205
S.R. #47 R/W PLANS, LOG-47, SHEET 16 OF 27

MARIAN A. IDLE
O.R. 85, PG. 21

DAYTON POWER AND LIGHT
PART OF PARCEL NO. 8
O.R. 329, PG. 713

MARIAN A. IDLE
O.R. 85, PG. 21

BOARD OF EDUCATION
BELLEFONTAINE CITY SCHOOL DISTRICT
8.98 ACRES
D.V. 234, PG. 43

KEMP G. CARTER, 111
17.460 ACRES
O.R. 241, PG. 388

WELL MP-3
257400.9866 N
1644638.0364 E
TOP OF PVC PIPE
ELEV. - 1194.70

DAW 97-03
257411.0300 N
1644638.2084 E
ELEV. - 1192.24

DAW 97-01
256983.4201 N
1645256.4850 E
ELEV. - 1196.72

WELL MP-1
256972.5827 N
1645255.0606 E
TOP OF PVC PIPE
ELEV. - 1199.68

WELL MP-2
256841.1693 N
1644666.4042 E
TOP OF PVC PIPE
ELEV. - 1194.74

DAW 97-02
256840.0937 N
1644676.7435 E
ELEV. - 1194.10

WOOLMAN & KNIGHT
ADDITION
PLAT BOOK A, PAGES 206 & 207

RETRACEMENT SURVEY OF THE REMAINDER
OF THE INLAND PRODUCTS INCORPORATED
ORIGINAL 9.57 ACRE FIRST TRACT
ORIGINAL 3 ACRE SECOND TRACT
ORIGINAL 2.9 ACRE THIRD TRACT
ORIGINAL 0.17 ACRE FOURTH TRACT
AND LOTS AND STREET IN FIFTH TRACT
DEED VOLUME 196, PAGE 430
SECTION 5, TOWN 3, RANGE 14
CITY OF BELLEFONTAINE
HARRISON TOWNSHIP
LOGAN COUNTY, OHIO

SURVEYED BY:

JEFFREY I. LEE
PROFESSIONAL SURVEYOR 6359
DECEMBER 3, 1997

COPYRIGHT 1997 BY:

LEE SURVEYING & MAPPING CO., INC.
117 North Madison Street
BELLEFONTAINE, OHIO 43311
(937) 693-7335



ORIGINAL STAMP IN GREEN

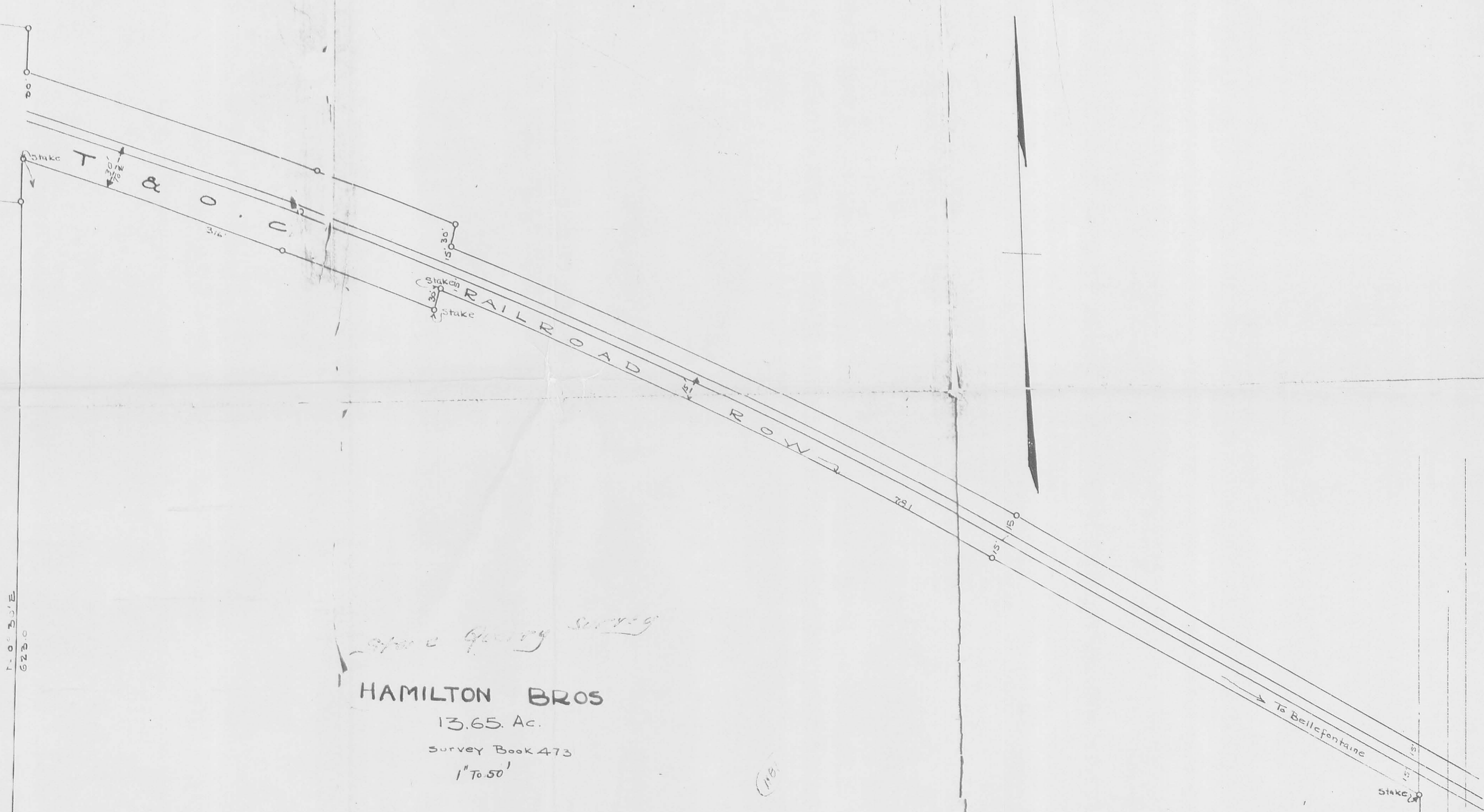
D-320 INLAND60 L-2593-1
INLAND50.DAT
(ROTATED) INLAND.DAT

CURVE	DELTA ANGLE	RADIUS	ARC	TANGENT	CHORD	CHORD BEARING
C 1	01°07'56"	10078.00'	199.17'	99.59'	199.17'	S 65°18'44"E
C 2	01°32'21"	3336.41'	89.62'	44.81'	89.62'	S 63°58'36"E
C 3	07°48'39"	3354.41'	457.29'	229.00'	456.94'	S 59°18'06"E
C 4	1°20'33"	3384.41'	79.29'	39.65'	79.29'	N 61°52'27"W

LINE	BEARING	DISTANCE
L 1	N 84°36'02"W	20.00'
L 2	N 84°36'02"W	10.03'
L 3	S 05°34'02"W	12.00'
L 4	S 50°24'33"W	21.22'

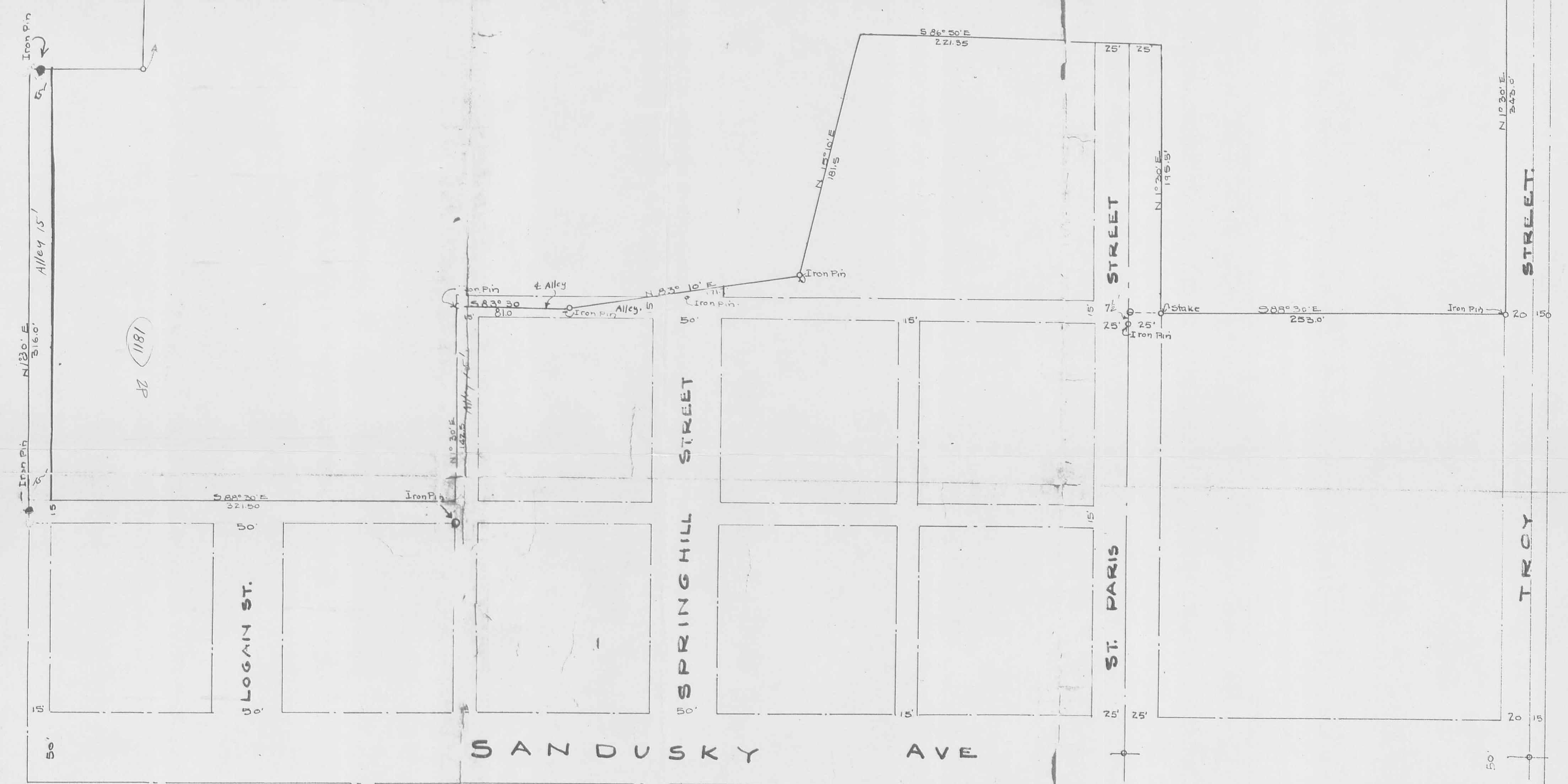
2 WORKING DAYS
BEFORE YOU DIG
CALL TOLL FREE 800-362-2764
OHIO UTILITIES PROTECTION SERVICE.

INDEXED ON MAP
11/21/97



Stone Quarry Survey

HAMILTON BROS
 13.65 Ac.
 Survey Book 473
 1" = 50'



Iron Pin
 Alley 15'
 1811 2P
 50'

LOGAN ST.
 50'

SPRING HILL STREET
 50'

SANDUSKY AVE

ST. PARIS

STREET

STREET

STREET

STREET

STREET

1811 2P

116

115

116

115

116

115

116

115

116

115

116

115

116

115

116

115

116

115

116

115

116

115

116

115

116

115

116

115

116

115

116

115

116

115

116

115

116

115

116

115

116

115

116

115

116

115

116

115

116

115

116

115

116

115

116

115

116

115

116

115

116

115

116

115

116

115

116

115

116

115

116

115

116

115

116

115

116

115

116

115

116

115

116

115

116

115

116

115

116

115

116

115

116

115

116

115

116

115

116

115

116

115

116

115

116

115

116

115

116

115

116

115

116

115

116

115

116

115

116

115

116

115

116

115

116

115

116

115

116

115

116

115

116

115

116

115

116

115

116

115

116

115

116

115

116

115

116

115

116

115

116

115

116

115

116

115

116

115

116

115

116

115

116

115

116

115

116

115

116

115

116

115

116

115

116

115

116

115

116

115

116

115

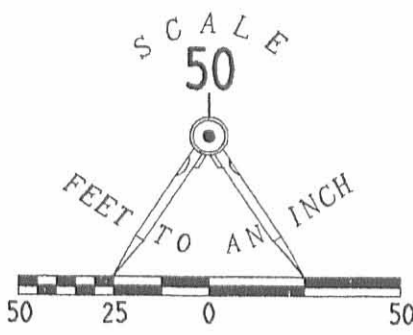
116

115

116

REC'D 12-5-01 8AM OK

INLAND PRODUCTS INCORPORATED
ORIG. 15.64 ACRES
VOL. 196, PG. 430



LEGEND

- 5/8 INCH IRON ROD SET
- 5/8 INCH IRON ROD FOUND
- ⊙ MAG NAIL SET
- ⊠ 1 INCH IRON ROD FOUND IN MONUMENT BOX

9.23'
N 04° 39' 32" E

N 87° 10' 59" E
58.49'

N 19° 11' 31" E
181.50'

S 82° 48' 29" E
171.35'

S 05° 31' 45" W
188.00'

**WOOLMAN & KNIGHT
ADDITION**
PLAT CABINET A, SLIDE 35

271.89'

15' ALLEY N 84° 42' 21" W

S 84° 41' 06" E

128.22'

2070

2071

2072

2073

2074

128.22'

N 84° 42' 42" W

2075

15' ALLEY
N 05° 18' 54" E
90.06'

S 05° 18' 54" W
90.00'

25.00'

ST. PARIS ST. (50')

SPRINGHILL ST. (50')

15' ALLEY

2076

2077

2078

2079

2080

2081

202.53'
N 05° 37' 07" E

47

SANDUSKY AVENUE

RETRACEMENT SURVEY OF
LOT 2069, LOT 2071 AND LOT 2073
OF WOOLMAN & KNIGHT ADDITION
PLAT CABINET A, SLIDE 35
SECTION 5, TOWN 3, RANGE 14
CITY OF BELLEFONTAINE
HARRISON TOWNSHIP
LOGAN COUNTY, OHIO

SURVEYED BY:

JEFFREY I. LEE
PROFESSIONAL SURVEYOR 6359
DECEMBER 3, 2001



ORIGINAL STAMP IN GREEN

COPYRIGHT 2001 BY:

LEE SURVEYING & MAPPING CO., INC.
117 North Madriver Street
BELLEFONTAINE, OHIO 43311
(937) 593-7335

D-320 INLAND2 L-3279-1
INLAND50.DAT (ROTATED) INLAND.DAT

2 WORKING DAYS
BEFORE YOU DIG
CALL TOLL FREE **800-362-2764**
OHIO UTILITIES PROTECTION SERVICE.

INDEXED ON MAP
1181 3P