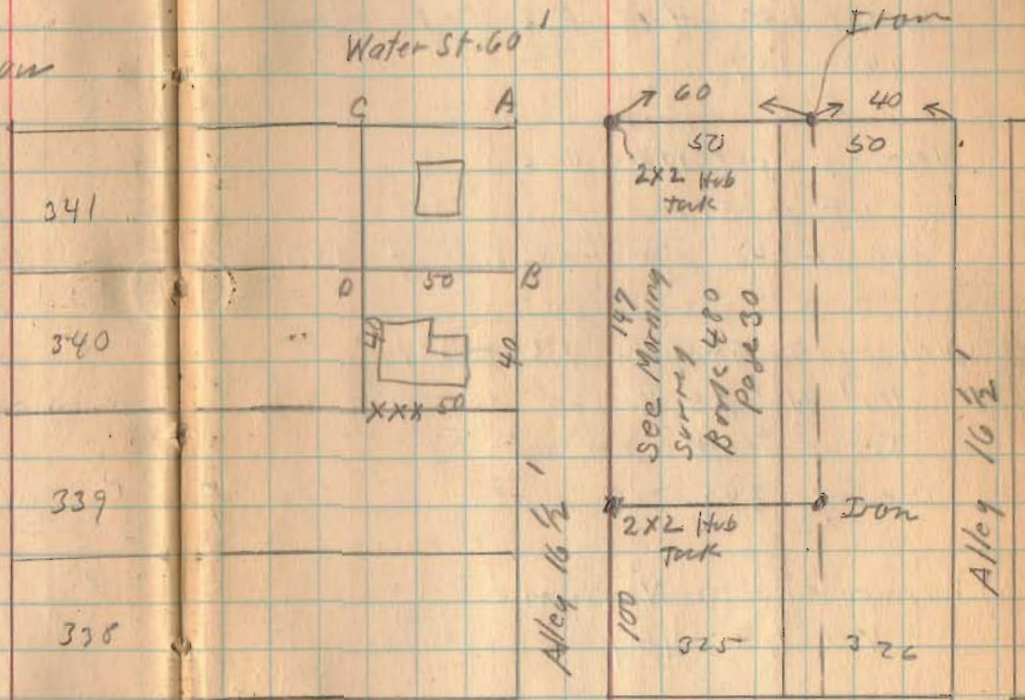


Newson Surrey  
Lot. 341 and 340 Water St

Original Plot Gives Lot 338 to 341  
as 62 1/2' Frontage and also show  
Lot 325 247' Deep. This  
Makes a difference of 3'

Noted short stretch of  
old fence and it is  
My opinion this was original  
division between lot 339 and 340  
Turned 90° from Alley To  
Hit old fence, Measured  
40' N for Archer's land.  
The balance would be  
Newson Land.  
See Next Page.



✓  
May-12-1930  
Fine Day  
Wright  
Bill Wright. 68



1193  
INDEXED ON MAP



Newson Survey (continued)

Clingerman Vol. 141 - Page 127  
 Part lots 338-339-340-341  
 except 50' off of E. End of  
 340-341

Newson Vol. 128 - 496  
 50' off of E. end of 340-341  
 except 40' off of S. side of 340

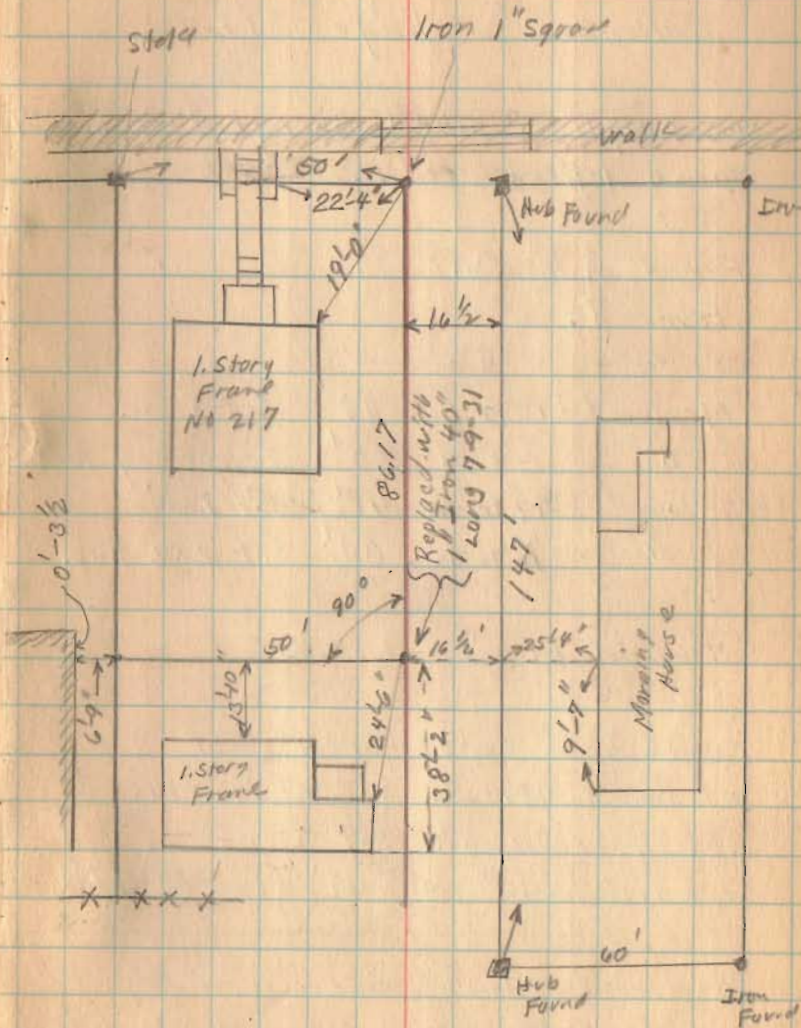
Newson To Archer 133-321  
 40' N 2nd S.  
 50' E 2nd W out of S.E.  
 cor of 340.

Humphreys To Newson  
 Vol 68 - 461

105' 8 1/2"  
 8 1/2"  
 26 1/2"  
 7

5-12-30

69



1193

INDEXED ON MAP