

CLARK'S PARK ADDITION

L.G. Thomas et ux. 1.60

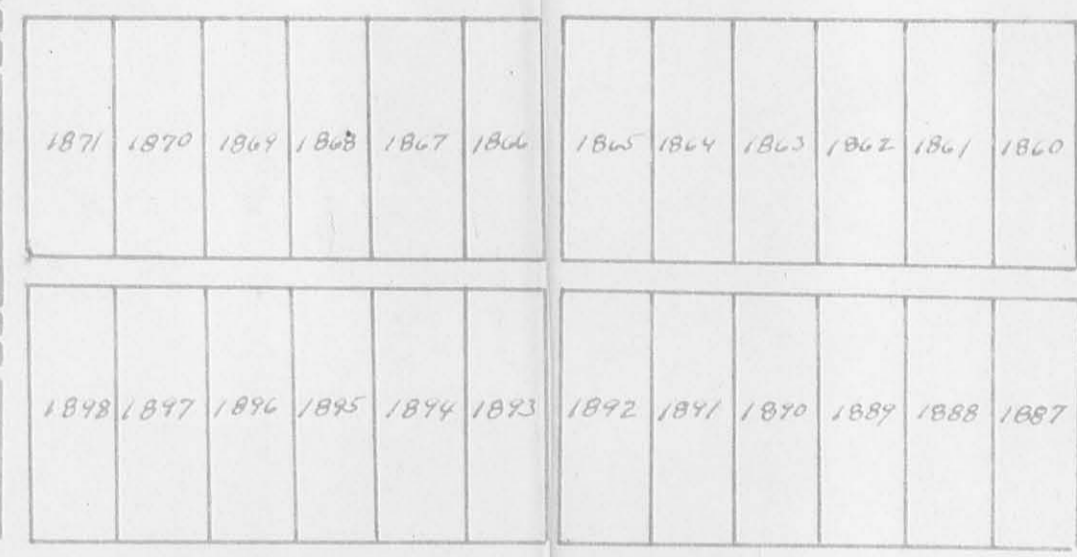
State of Ohio

Logan County Commissioners 9.53

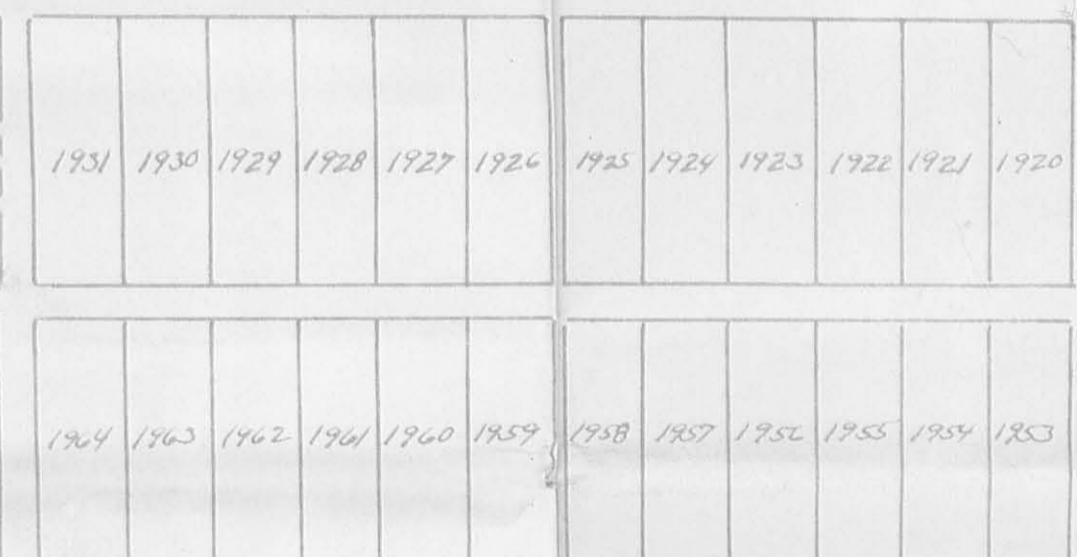
A.G. Brown et ux. 0.20
I.G. Brown et ux. 0.14

New Corporation Line

THIRD ST.

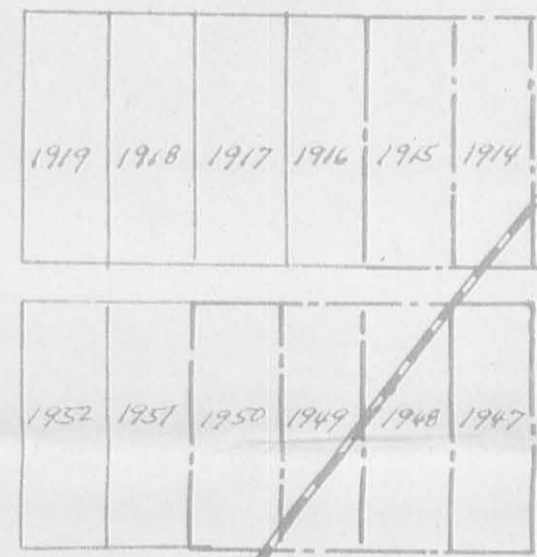


SECOND ST.



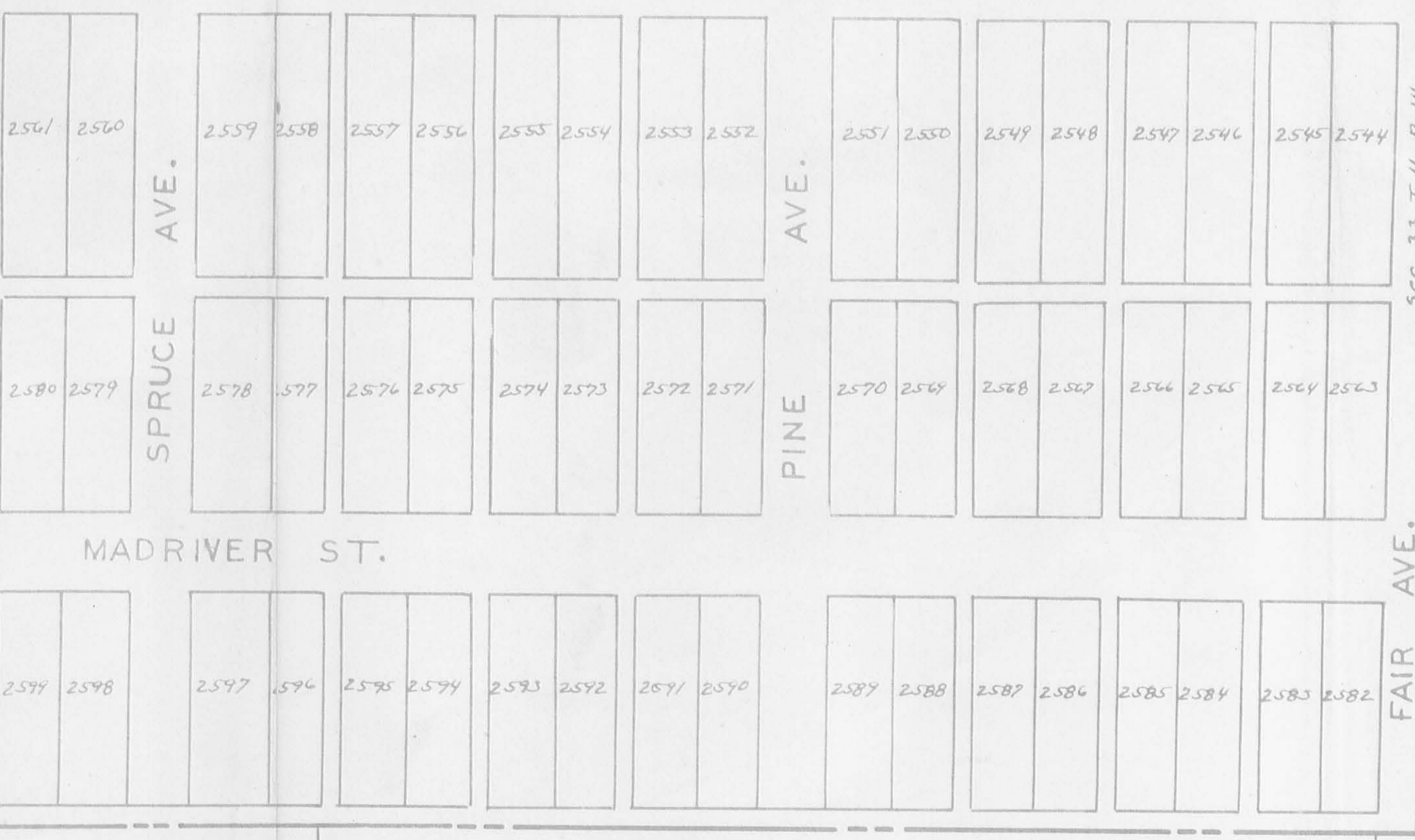
MAIN ST. STAT HIGHWAY 189

IRON AVE.



U.S. ROUTE 68

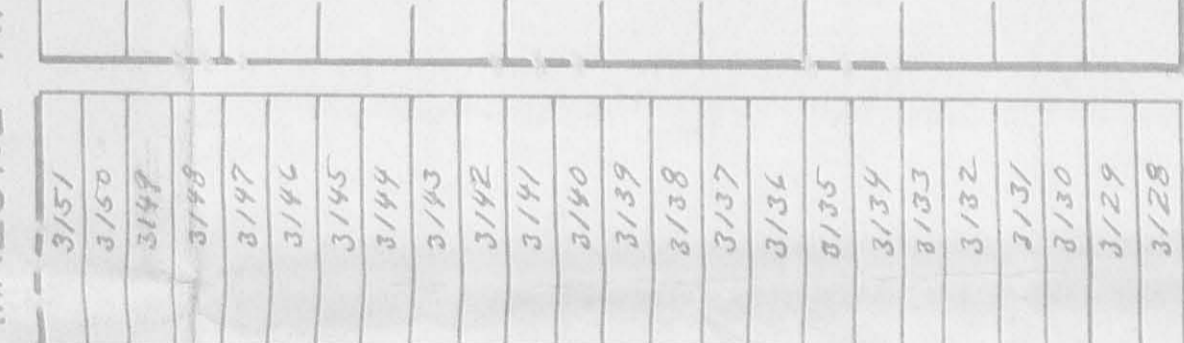
LIBERTY AVE.



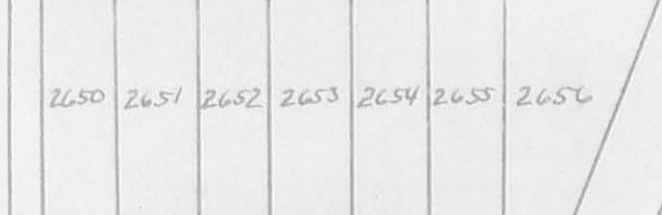
MADRIVER ST.

FAIR AVE.

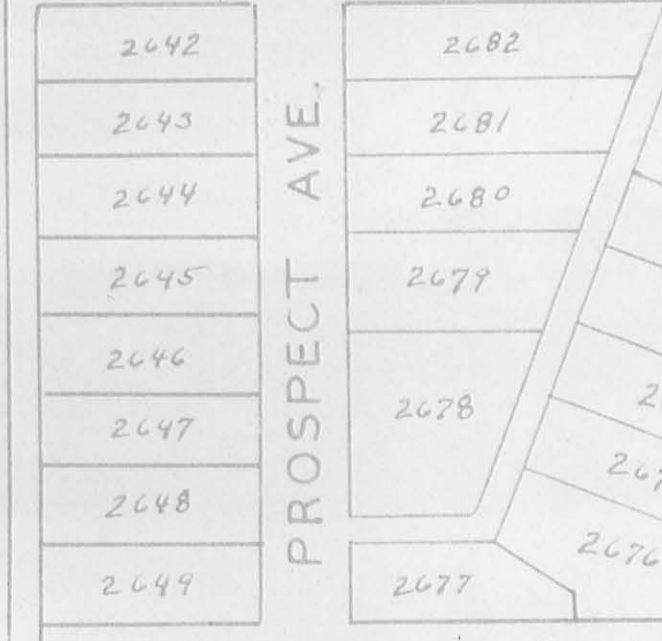
MALONE AVE.



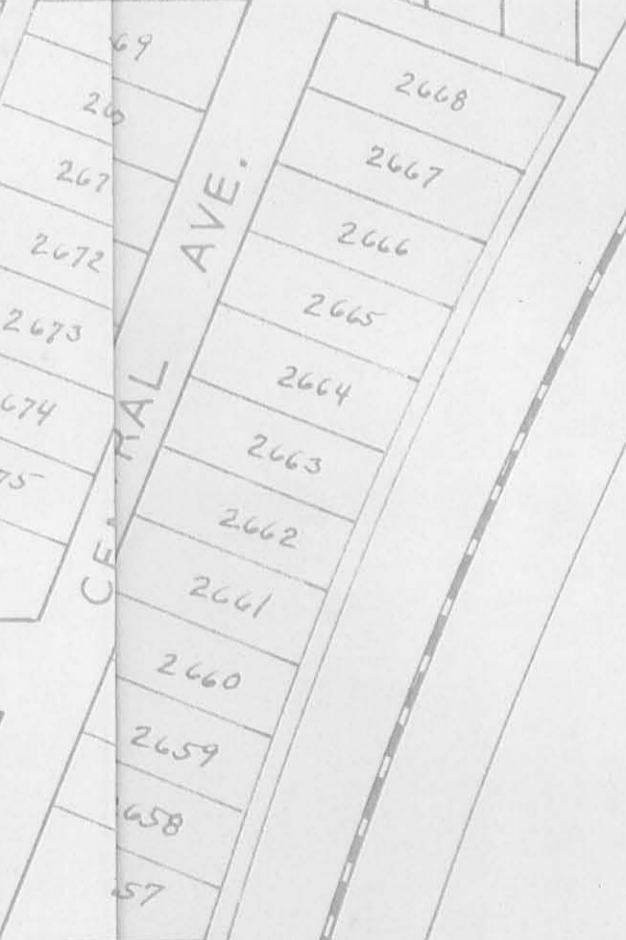
OAK ST.



PROSPECT AVE.



CENTRAL AVE.



Glen R. Leidigh 3.52

Glen R. Leidigh

Geo. Knowlton

Board of Education

Eva. N. Park

Present Corporation Line

DETROIT ST.

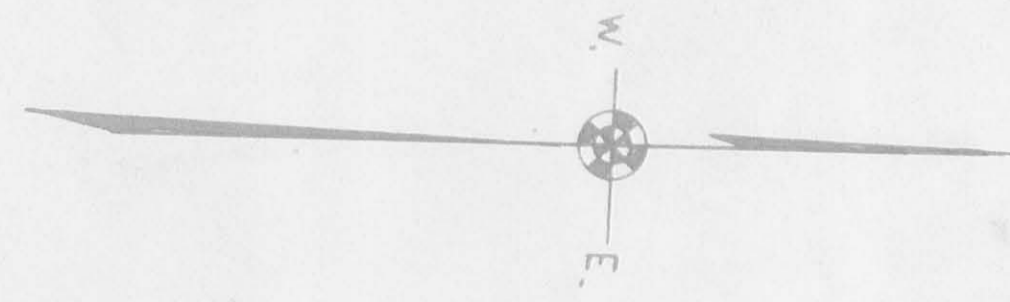
MAIN ST.

Present Corporation Line

FAIR AVE.

CORPORATION LINE EXTENSION TO BELLEFONTAINE OHIO LAKE TOWNSHIP — LOGAN COUNTY MARCH 1945 1" = 100'

LOTS 1848 TO 1964 IRON CITY ADDITION
LOTS 2544 TO 2600 BELLEVILLE ADDITION
LOTS 2627 TO 2682 IRON CITY HEIGHTS
LOTS 3128 TO 3151 CLARK'S PARK ADDITION



Drawn by F. E. Wright
New Incorporation
70.6 ACRES.
Accepted by
Bellefontaine City
Council Nov. 12, 1945.

KK-9

KK-9

New Incorporation 90.0 Acres
 Accepted by Council Nov. 12, 1945.
 Drawn By C.R. Fawcett & E.R. Wright

22-22
 22-22
 K-K-9-A



IRON CITY
 CORPORATION LINE EXTENSION
 BELLEFONTAINE OHIO
 LOGAN COUNTY

LOTS 1848 TO 1864 IRON CITY ADDITION
 LOTS 2544 TO 2600 BELLEVILLE ADDITION
 LOTS 2627 TO 2682 IRON CITY HEIGHTS
 LOTS 3128 TO 3151 CLARKS PARK ADDITION

LAKE TOWNSHIP
 NOV. 1945 12:00'
 CITY ENGINEER

120
 20