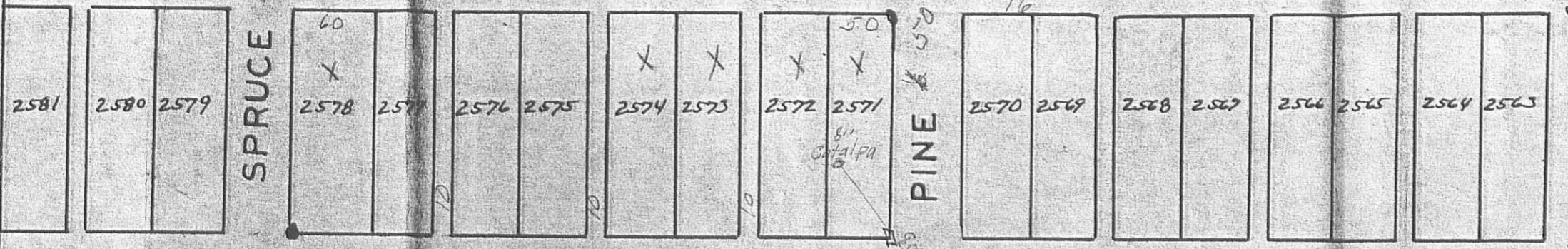
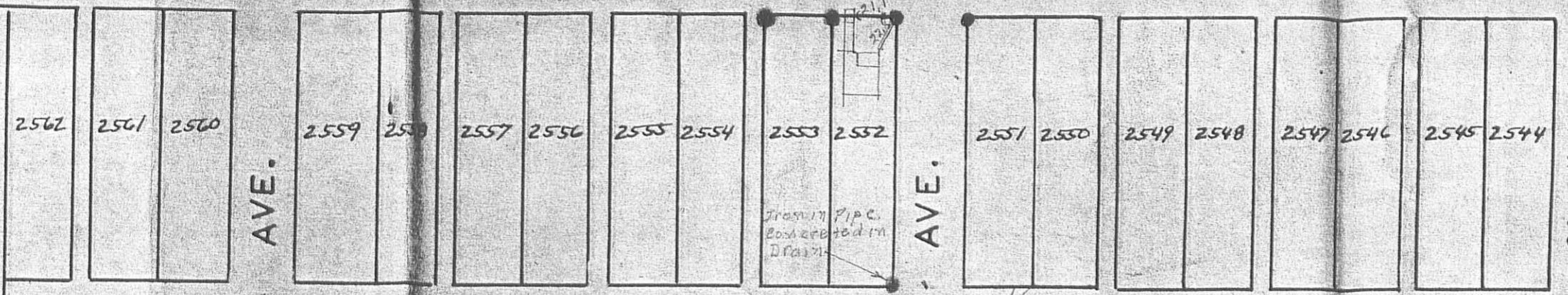


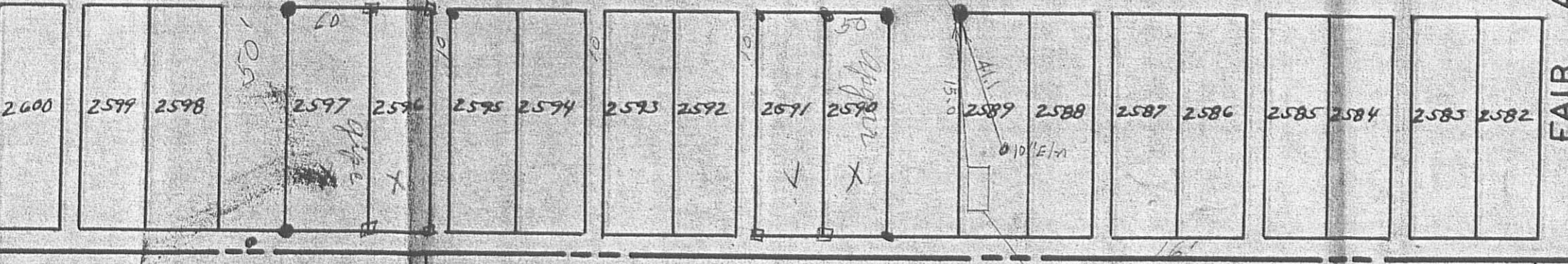
E.M. Kiblinger
0.97

U. S. ROUTE 68

MAIN ST.



MADRIVER ST.



Sec. 33 T.4 R.14
Sec. 34 T.4 R.14

Present Corporation Line

Glen R. Leidigh
3.52

Geo. Knowlton

Board of Education

Garage

CORPORATION LINE EXT
TO
BELLEFONTAINE

LAKE TOWNSHIP — LOGAN

MARCH 1945 1" = 100'

1972 IP