

Located iron pins at "A", "B", and "D", located iron pipes at "F", "J", "K", "L", and "P", located hubs at "C", "M", and "N".

Checked distance D-Q (587'), set transit at "B", measured on line A-B from "B" north 238.0 feet, turned 90° angle left, located iron pipe "L" at 25 feet, located iron pipe "J" at 154.0 feet, and set offset point at 164.0 feet.

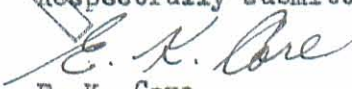
Instrument on "B" located iron pipe at "F", line B-F measured 169.0 feet. Measuring from "B" located 2" Hub "C" at 20.0 feet, Iron Pin "D" at 25.0 feet, set point for offset at 164.0 feet.

Instrument on offset line 10.00 feet west of "J" (offset line 5.0 feet east of west line of alley), set point on offset line at lot line of lots 2006 and 2005 produced, set instrument on above lot line produced, turned 90° located 2" hubs at "M" and "N", replaced hubs with iron pipes. Set iron pipe at "H" on line "M" - "J" projected 12.0 feet south from "J", set iron pin at "G" on line M-H projected 21.0 feet south from "H".

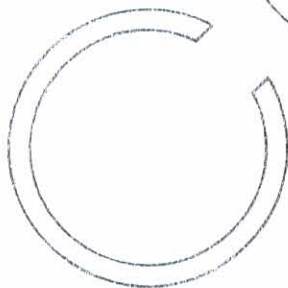
Located "P" 30.0 feet from the center line of Sandusky Avenue measured at right angles, and on the northwest corner of lot 2000. Distance P-Q measured 153.9 feet. Point "Q" was located only and due to a concrete slab which has been poured over this point, the iron at "Q" was not dug up.

The conclusion results in the following: Hayes Street is evidenced by points "A", "B", "C", "D", "E", "K", "L" and "Q"; the south line of Sandusky Avenue by points, "P" and "Q"; the 15.0 foot alley by points "D", "F", "N", "M", "J", "H", "G" and "E"; and the 12.0 foot alley by points "K", "H", "J" and "L".

Respectfully submitted,

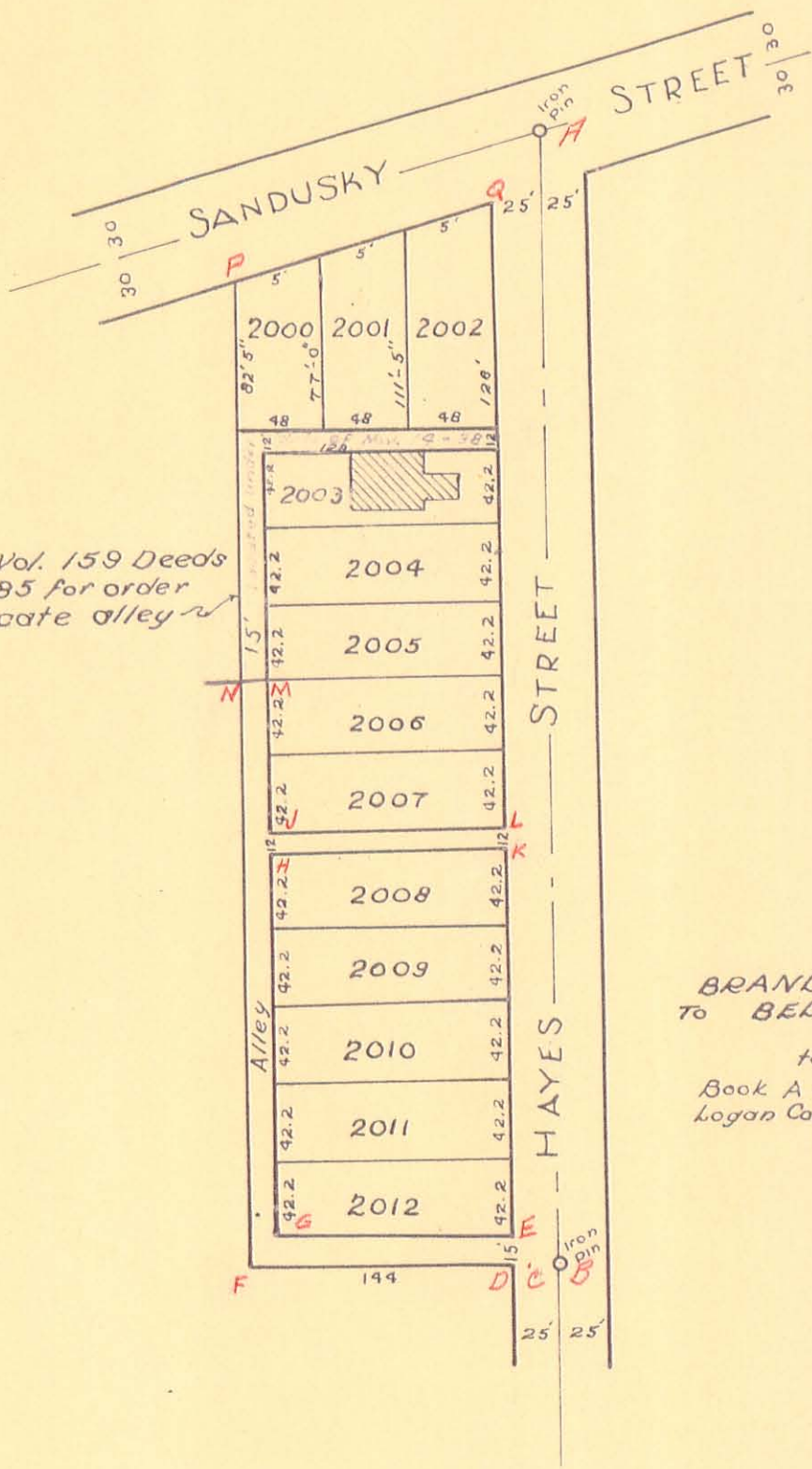

E. K. Core
County Engineer

EKC:ED



INDEXED ON MAP
1981 2D

See Vol. 159 Deeds
pg. 385 for order
to vacate alley



BRANDS ADDITION
TO BELLEFONTAINE, O.

taken from
Book A of Vol. 2. Page 34 New No.
Logan County Records office

INDEXED ON MAP
1981 2P

McLaughlin - Judy Survey Hayes Street Bellefontaine May 1958

The following described land in Bellefontaine, Lake Township, Logan County Ohio and being part of Lot Number 2004 of Brands Addition and being 3.00 feet wide north and south and 144.00 feet east and west and being more fully described as follows :

Beginning at the S.E. corner of Lot Number 2003 (which is also the N.E. corner of Lot Number 2004) at the west side of N Hayes Street thence with the west side of N Hayes Street South 17.00 feet to an iron said iron being the beginning point of this survey thence again with the west side of N Hayes Street South 3.00 feet to an iron the last described line being 25.00 feet west of and parellel with the monumented center line of N. Hayes Street thence West 144.00 feet to an iron at the west side of said Brands Addition the last described line being 20.00 feet south of and parellel with the north line of said Lot Number 2004 thence with the west side of Brands Addition North 3.00 feet to an iron thence East 144.00 feet to the place of beginning the last described line being 17.00 feet south of and parellel with the north line of said lot Number 2004.

cc
Logan County Engineer.

*on Plat
Book*

INDEXED ON MAP
1981 3D