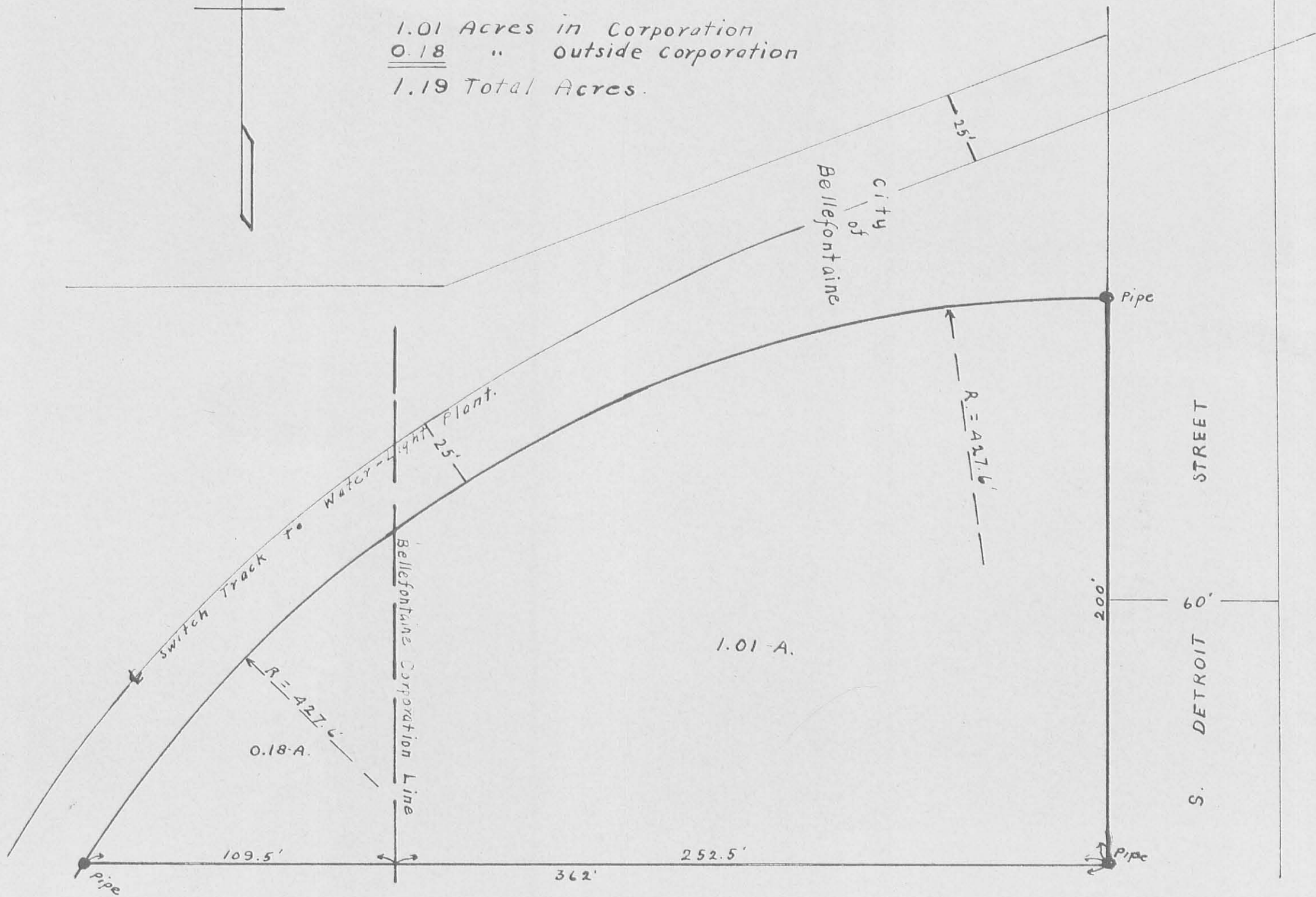


1.01 Acres in Corporation  
0.18 " outside corporation  
1.19 Total Acres.



SURVEY OF  
FARM BUREAU TRACT  
SECTION 34 TOWN 4 RANGE 14  
LAKE TWP. LOGAN COUNTY OHIO  
SEPTEMBER 1949  
WALTER V. SCOTT  
1" = 40'  
REGISTERED SURVEYOR

2004 IP



