

PLAT OF
LOT 159 & 160
 BELLEFONTAINE, OHIO
 SHOWING LOCATION OF
 LOGAN COUNTY PROPERTY
 Scale 1/8" = 1'

(211) HP
 Indexed

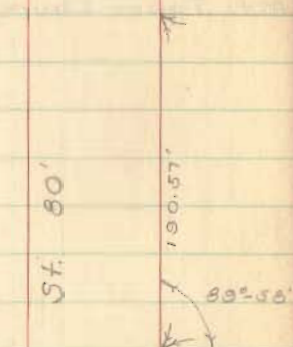
Surveyed & Drawn by
 Dan L. Dodson
 Dec. 2 & 4, 1953
 F. B. # 699 Pgs. 1-3

Survey of Lot # 153 & 160
Bellefontaine Ohio

FB 699

Copper
Screen
found

90°-01' Direct
90°-01' Reversed



527.7'
Main St. 80'

190.57'
89°-55'

220.63'

Man. Cover

89°-56'-40" D
89°-56'-40" R

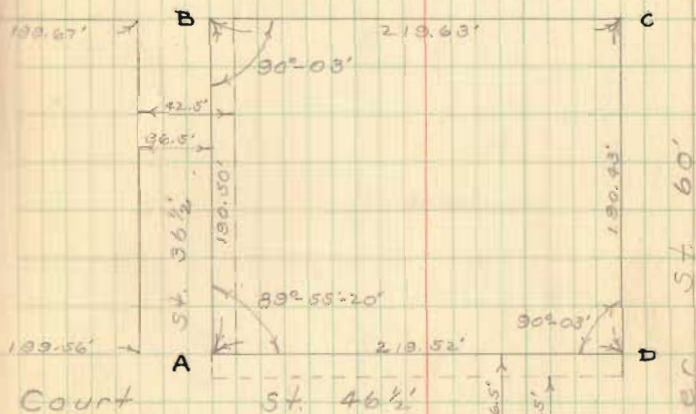
Columbus St. 60'



525.8'

Found Copper
Screw-braken
Set large metal
rivet-hole in center

89°-55' D
89°-55' R



INDEXED ON MAP

2111

525.4'
Chillicothe St. 60'

D: 90°-06'
R: 90°-06'

Iron
(Man. Cover)

Lot # 159 & 160
(cont'd)

Witnesses to Various points

FB 699

