



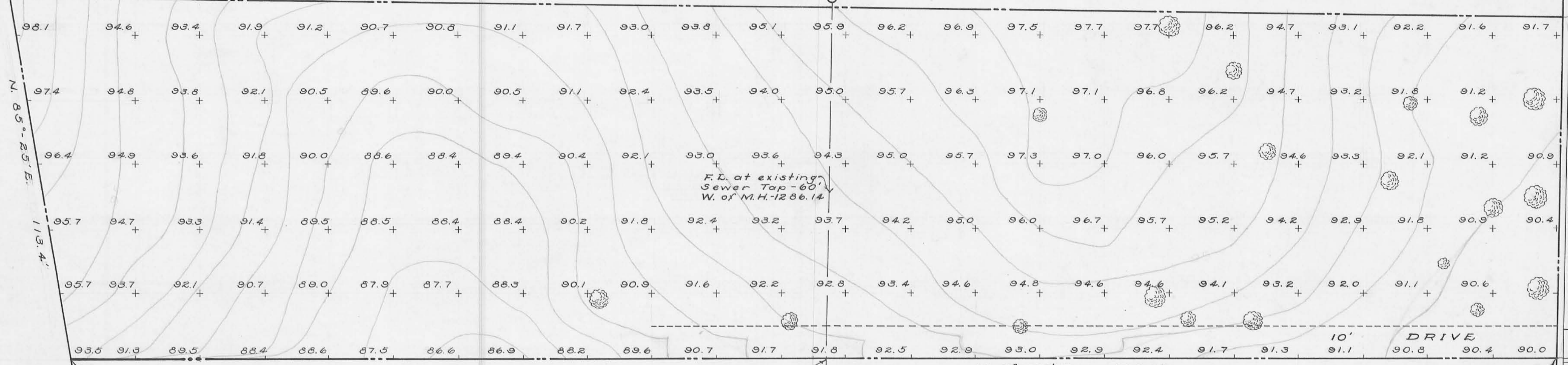
Harry S. Grandi

Harry S. Grandi

F.L. of Sewer at M.H. - 1290.28

S. 5° - 47' W. 480.8'

N. 85° - 25' E. 113.4'



F.L. at existing Sewer Tap - 60' W. of M.H. - 1286.14

F.L. of Sewer at Property Line 1282.62

N. 5° - 01' E. 460.0'

Stone Found

Stone Found

Marvin L. Pickering

Marvin L. Pickering

SCALE 1" = 20'

Property Line
 Existing Trees
 Bench Mark
 North edge of Mon. Box, Center Line of
 Columbus & Stanley St. Elev. 1283.09
 Datum - U.S.G.S. To obtain
 U.S.G.S. Datum add 1200.00 feet to
 elevations shown

TOPOGRAPHICAL MAP
 OF THE
THOMAS E. HUBBARD TRACT
EAST COLUMBUS AVE. - BELLEFONTAINE
V. M. S. 4990 LAKE TOWNSHIP
LOGAN COUNTY, OHIO
1955

Surveyed & Drawn by
 Dan L. Dodson
 Surveyor-in-Training
 March 12-19, 1955

Thomas Hubbard
Survey
E. Columbus Ave - Bellefontaine

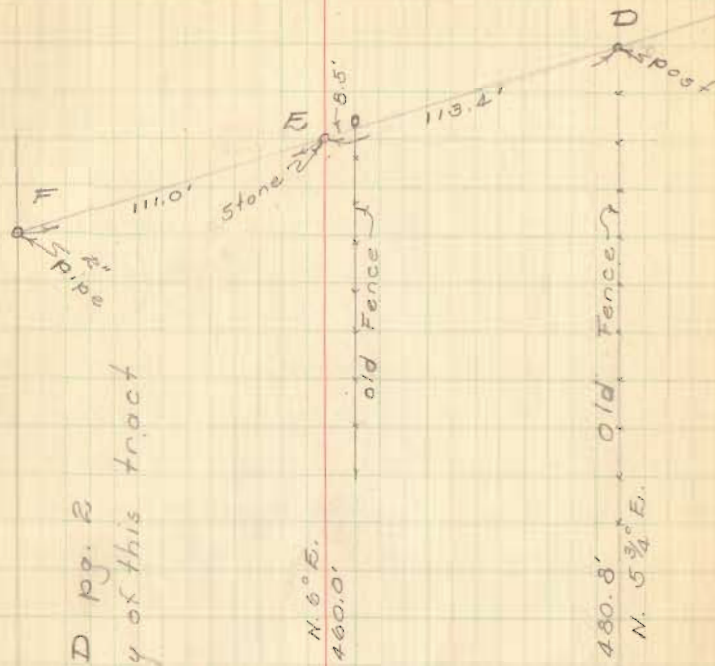
- A = 5" x 6" sandstone, with chiseled +
in center, Found - 4" deep
- B = 3" x 3" sandstone, with chiseled +
in center, Found - 4" deep
- C = rectangular sandstone, corner
stone for iron fence, used S.W.
corner of stone for Hubbard's
corner. checked OK with old
fence on line C-D
- D = Wood corner post
- E = Large Stone Found, 12" deep
- F = 2" pipe Found, set by F. F. Wright

INDEXED ON MAP
21 32

D. Dodson
C. Nichols

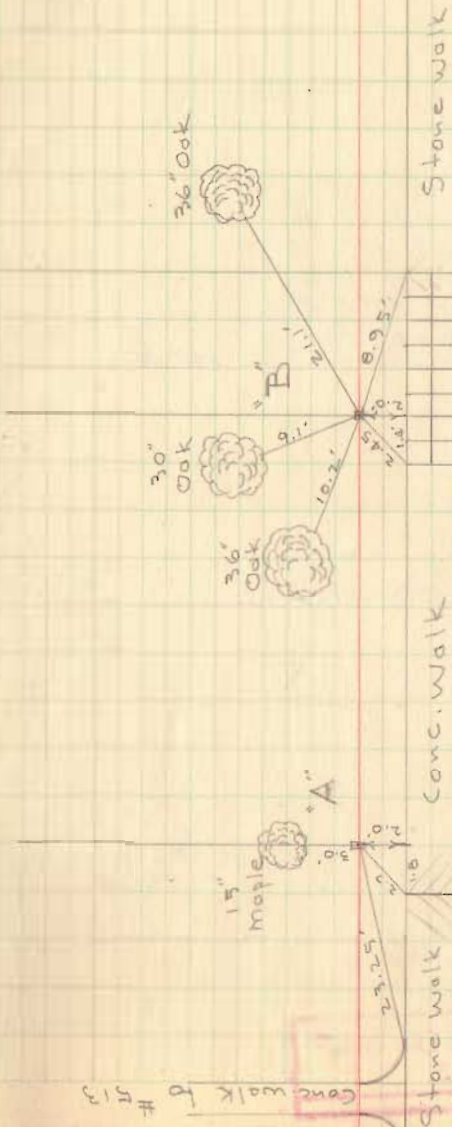
Mar. 12, 1955
65°

35



E. Columbus Ave.

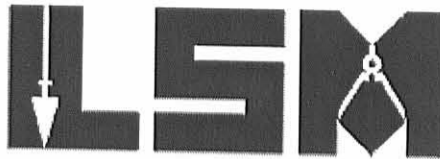
INDEXED ON MAP
2132



Lee Surveying and Mapping Co., Inc.

Land Surveys • Topography • Subdivisions • Construction Layout

117 N. Madriver St.
Bellefontaine OH 43311



Phone: (937) 593-7335
Fax: (937) 593-7444
surveys@lsmcinc.us

HUBBARD 1.158 ACRES

Lying in Virginia Military Survey 4990, City of Bellefontaine, Lake Township, Logan County, Ohio.

Being all of the Janet K. Hubbard 1.22 acre tract as deeded and described in Official Record 603, Page 164 of the Logan County Records of Deeds and being more particularly described as follows:

Commencing on a 1 inch square iron bar found on the intersection of the east right-of-way of Stanley Street (40 feet wide) and the north right-of-way of Columbus Avenue (60 feet wide).

THENCE, with the north right-of-way of Columbus Avenue, S 88°-00'-00"E, a distance of 301.53 feet to a MAG nail set at the TRUE POINT OF BEGINNING.

THENCE, with the east line of The Logan County Historical Society 1.23 acre tract (O.R. 55, Pg. 747), N 01°-16'-43"E, a distance of 460.01 feet to a 5/8 inch iron rod set.

THENCE, with the south lines of The Logan County Historical Society 0.276 acre tract (O.R. 946, Pg. 285), the Duane Neer 0.72 acre tract (O.R. 918, Pg. 182) and the Robert G. Goble 0.89 acre tract (O.R. 50, Pg. 604), N 81°-53'-08"E, a distance of 111.13 feet to a 4" square wood fence post found.

THENCE, with the west line of Colonial Arms Condominium (Plat Cabinet B, Slide 65A), S 01°-49'-06"W, a distance of 479.49 feet to a point on the north right-of-way of Columbus Avenue, passing a 5/8 inch iron rod found at 4.97 feet, said point referenced by a 5/8 inch iron rod found bearing S 01°-49'-06"W, a distance of 0.22 feet.

THENCE, with the north right-of-way of Columbus Avenue, N 88°-00'-00"W, a distance of 105.13 feet to the point of beginning.

Containing 1.158 acres.

Property is subject to any and all previous easements and rights-of-way of record.

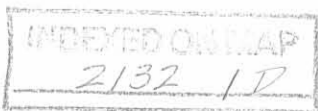
The basis for bearings is the center-line of Columbus Avenue, being S 88°-00'-00"E, and all other bearings are from angles and distances measured in a field survey by Lee Surveying and Mapping Co., Inc. on October 11, 2011.



Description prepared by:

William K. Bruce
William K. Bruce
Professional Surveyor 7437
October 12, 2011

52191011

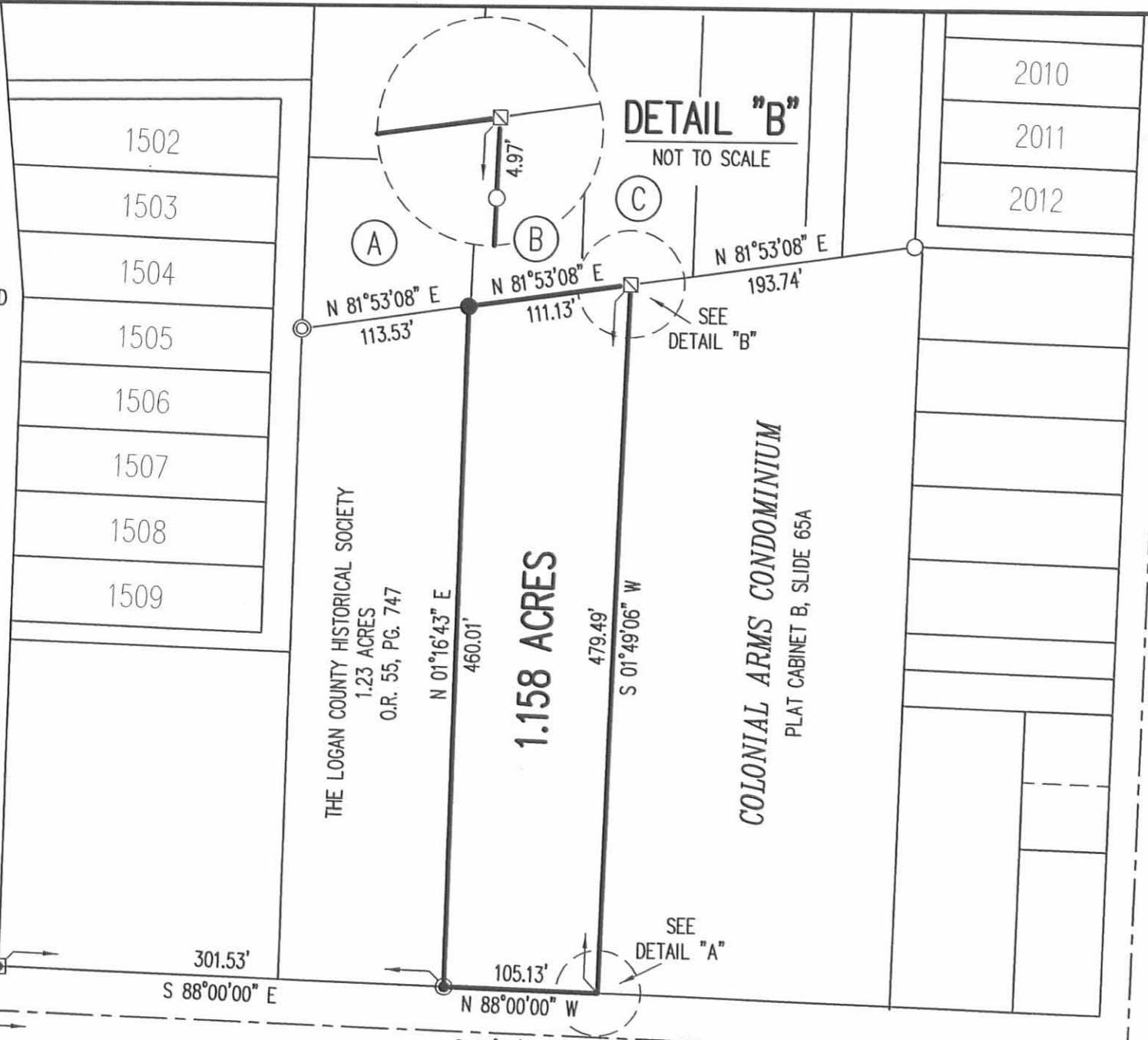


REC'D 10-21-11 SWM/oc

LEGEND:

- ☒ STONE FOUND IN MONUMENT BOX
- ⊙ 2 INCH IRON PIPE FOUND
- ⊠ 1 INCH SQUARE IRON BAR FOUND
- MAG NAIL SET
- ☒ 4 INCH SQUARE WOOD FENCE POST FOUND
- 5/8 INCH IRON ROD FOUND
- 5/8 INCH IRON ROD SET WITH PLASTIC I.D. CAP STAMPED "LSM 7437"

STANLEY STREET (40')



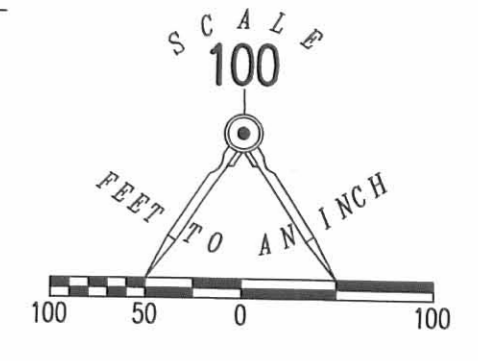
1.158 ACRES

DETAIL "B"
NOT TO SCALE

DETAIL "A"
NOT TO SCALE

ADJOINERS

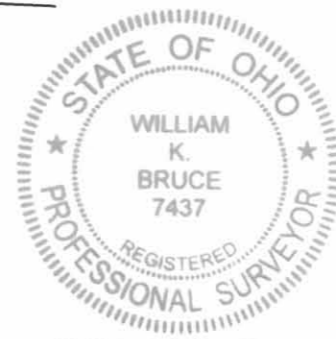
- (A) THE LOGAN COUNTY HISTORICAL SOCIETY
0.276 ACRE
O.R. 946, PG. 285
- (B) DUANE NEER
0.72 ACRE
O.R. 918, PG. 182
- (C) ROBERT G. GOBLE
0.89 ACRE
O.R. 50, PG. 604



RETRACEMENT SURVEY OF THE
 JANET K. HUBBARD
 1.22 ACRE TRACT
 OFFICIAL RECORD 603, PAGE 164
 VIRGINIA MILITARY SURVEY 4990
 CITY OF BELLEFONTAINE
 LAKE TOWNSHIP
 LOGAN COUNTY, OHIO

SURVEYED BY:

William K. Bruce
 WILLIAM K. BRUCE
 PROFESSIONAL SURVEYOR 7437
 OCTOBER 11, 2011



ORIGINAL STAMP IN GREEN

COPYRIGHT 2011 BY:
 LEE SURVEYING & MAPPING CO., INC.
 117 North Madriver Street
 BELLEFONTAINE, OHIO 43311
 (937) 593-7335
 WWW.LSMINC.US
 surveys@lsmcinc.us
 KSS D1011 52191011 L-5219-3

2 WORKING DAYS
BEFORE YOU DIG
 CALL TOLL FREE **800-362-2764**
 OHIO UTILITIES PROTECTION SERVICE.

INDEXED ON MAP
 2132 IP