

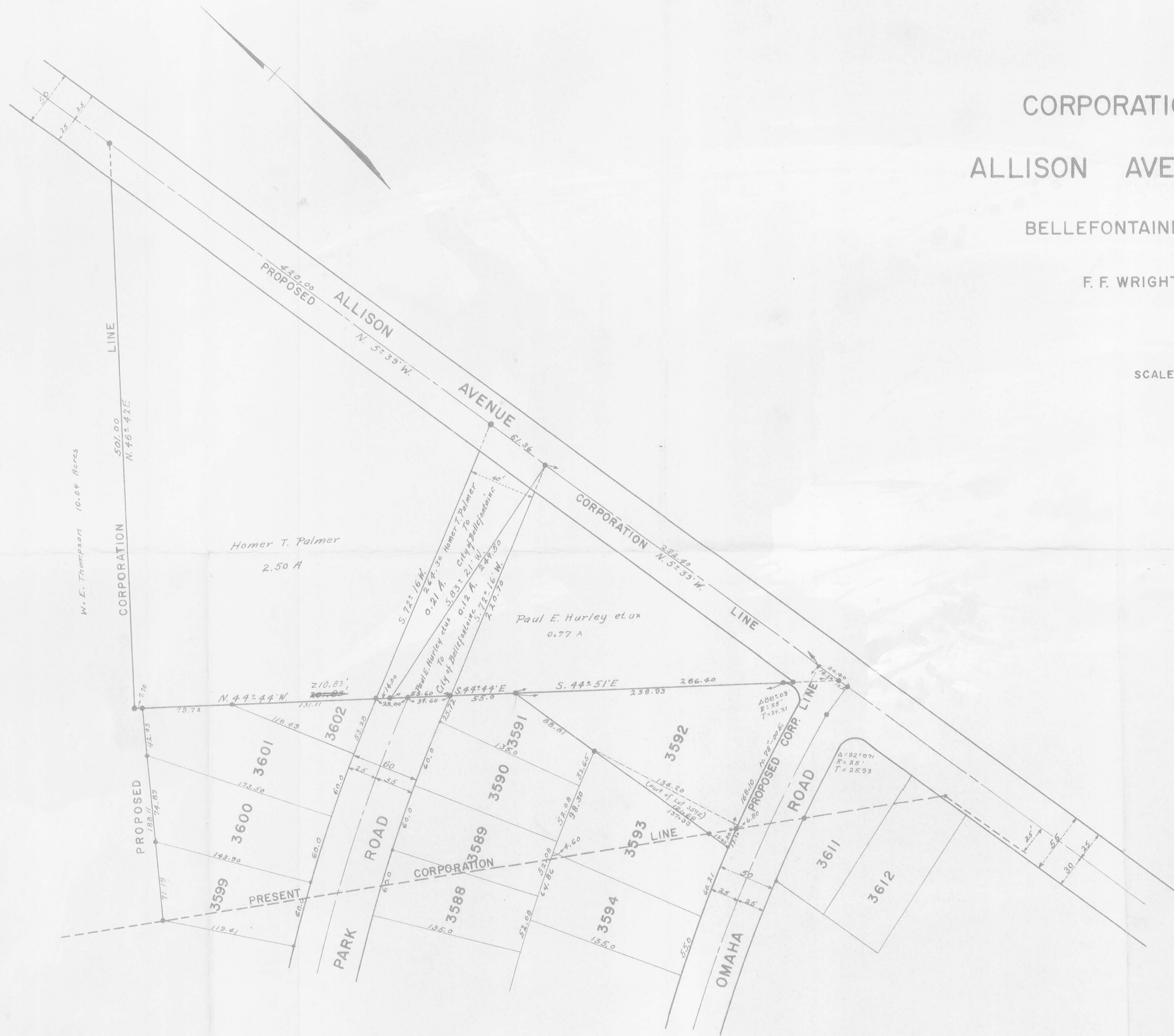
CORPORATION LINE EXTENSION ALLISON AVENUE AT OMAHA ROAD

BELLEFONTAINE OHIO V.M.S. 5245

F. F. WRIGHT CITY ENGINEER

1955

SCALE 1-INCH = 50 FEET



SURVEYORS CERTIFICATE
I hereby certify that the annexed Plat is a correct representation of the property to be annexed to the City of Bellefontaine Ohio.
Foster F. Wright
Registered Surveyor No. 1673

ACCEPTANCE
The annexed plat was approved and accepted by the Board of County Commissioners at a regular meeting of the 27th day of July, 1955 and recorded in Journal Case File Page 72.
H. H. Lane
Luigi Pusick
Commissioners of Logan County

ACCEPTANCE
The annexed plat was adopted by Ordinance No. 2342 as an addition to the City of Bellefontaine Ohio at a special meeting of the City Council on the 6 day of October, 1955.
J. F. Wynn
James B. Weir
Mayor
Clerk

AUDITORS OFFICE LOGAN COUNTY OHIO
Transferred this _____ day of _____ 1955
Auditor Logan County

RECORDERS OFFICE LOGAN COUNTY OHIO
Received for Record at _____ o'clock _____ 1955
Recorded in Plat Book _____ Volume _____ Page _____
Recorder Logan County



2173 IP

2143