

COLUMBUS

40.0
40.0

DETROIT

Plat Distance 268.25'; Measured Distance 269.1'

Chiseled mark on E" edge of walk

Plat Dist. 55.0
Measured Dist. 55.23'

Plat Dist. 55.0'
Measured Dist. 55.23'

Lot #67

Lot Line

Lot #78

Plat Dist 220.0'; Measured Dist. 220.65'

1" = 30.0

BELLEFONTAINE, OHIO

Building 4" S" of line

55.23'

15.06'

22.06'

TRACT 3

22.06'

TRACT 2

44.13'

TRACT 1

44.13'

55.23'

70.29'

22.06'

22.06'

44.13'

15.06'

40.17'

88.25'

Iron

Iron

INDEXED ON MAP
2149 IP

COURT

8.25'
8.25'

30.0 30.0

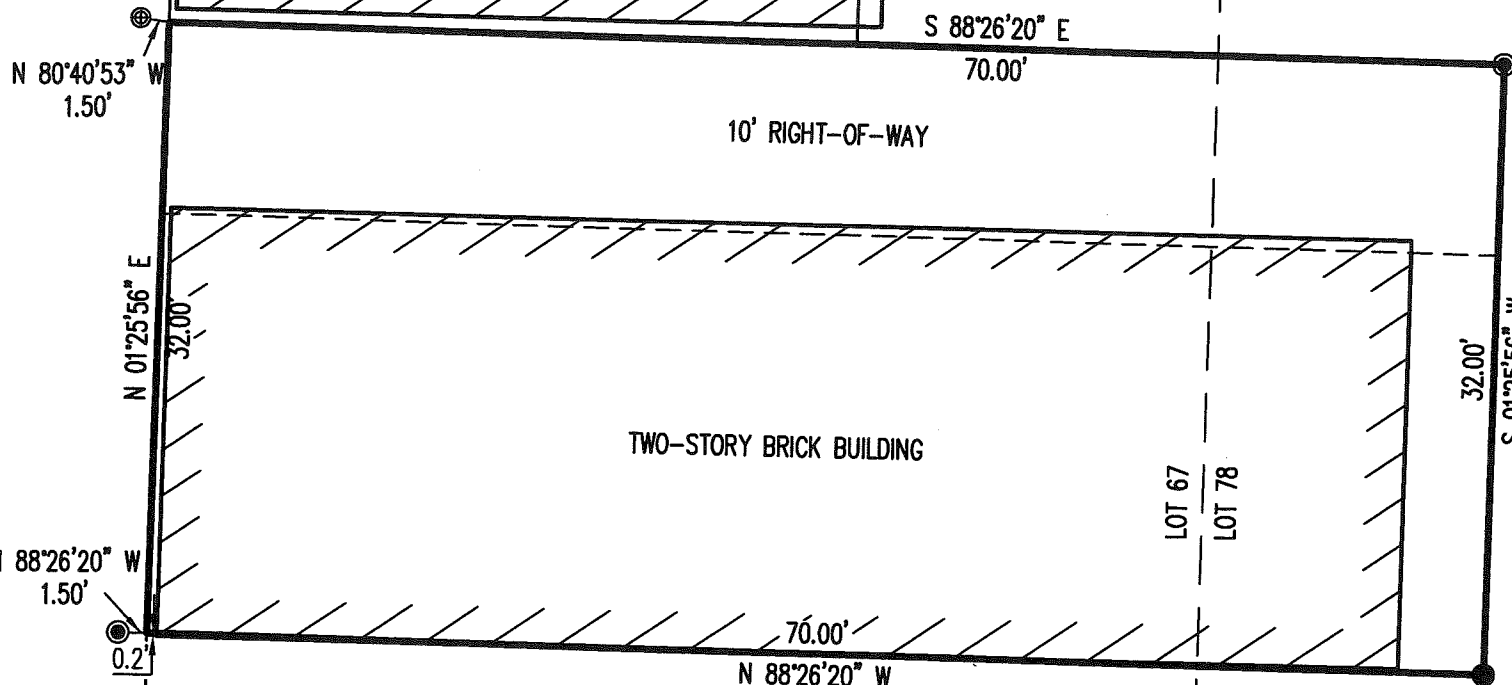
The parts of Lot 67 & lot 78 owned by A.W. King & Lawrence King.

Owen K. Shirk
Registered Surveyor 4271

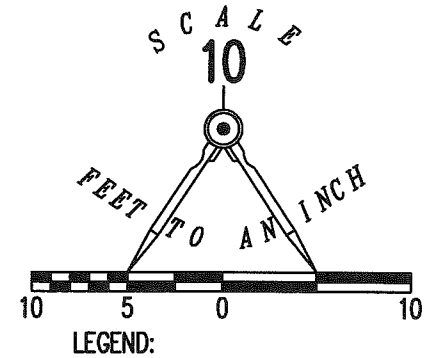
11-15-17

APPROVED

DETROIT STREET (60')



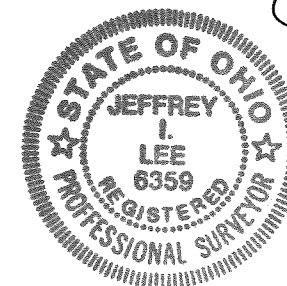
JASON CHIEN-I-DU
O.R. 109, PG. 604
PARCEL I



RETRACEMENT SURVEY OF THE
 BARRY R. VOSS AND
 MINDY S. VOSS
 PART OF LOTS 67 AND 78
 ORIGINAL PLAT OF BELLEFONTAINE
 PLAT CABINET A, SLIDE 1
 OFFICIAL RECORD 1250, PAGE 435
 CITY OF BELLEFONTAINE
 LAKE TOWNSHIP
 LOGAN COUNTY, OHIO

SURVEYED BY:

Jeffrey I. Lee
 JEFFREY I. LEE
 PROFESSIONAL SURVEYOR 6359
 OCTOBER 31, 2017



ORIGINAL STAMP IN GREEN

COPYRIGHT 2017 BY:
 LEE SURVEYING & MAPPING CO., INC.
 117 North Madriver Street
 BELLEFONTAINE, OHIO 43311
 (937) 593-7335
 WWW.LSMINC.US
 surveys@lsminc.us

KSS D1017 22571014 L-2257-3

THIS SURVEY WAS PREPARED IN THE ABSENCE OF A COMPLETE AND ACCURATE TITLE SEARCH AND DOES NOT GUARANTEE TITLE.

2 WORKING DAYS



BEFORE YOU DIG

CALL TOLL FREE 800-362-2764

OHIO UTILITIES PROTECTION SERVICE.

INDEXED ON MAP
2149 2