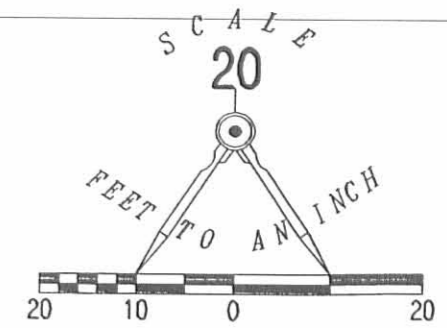


REC'D 6-23-06 SMY OK

SANDUSKY STREET (60 FEET WIDE)



STEPHEN D. COFFMAN  
PART OF LOT 229  
O.R. 737, PG. 731

THE CHURCH OF THE HOLY TRINITY  
PART OF LOT 240  
VOL. 247, PG. 332

THE CHURCH OF THE HOLY TRINITY  
PART OF LOTS 240 AND 243  
VOL. 115, PG. 1

DANIEL A. ALLISON  
PART OF LOT 240 AND LOT 243  
O.R. 548, PG. 723

LOT 229

LOT 240

LOT 243

TURN AROUND  
SIZE NOT DEFINED

THE CHURCH OF THE HOLY TRINITY  
PART OF LOT 229  
VOL. 350, PG. 971  
TRACT II

6 FOOT WIDE RIGHT-OF-WAY  
AND DRIVE WAY EASEMENT

DANIEL ALLISON AND ERIN ALLISON  
PART OF LOTS 240 AND 243  
O.R. 745, PG. 317

139.96'  
S 03°06'21" W  
BASIS FOR BEARINGS

PARK STREET (30 FEET WIDE)

LEGEND

- 5/8 INCH IRON ROD SET
- ☒ STONE FOUND INSIDE MONUMENT BOX

A RETRACEMENT SURVEY OF  
 DANIEL A. ALLISON  
 PART OF LOT 240 AND LOT 243  
 ORIGINAL PLAT OF BELLEFONTAINE  
 PLAT CABINET A, SLIDE 1  
 OFFICIAL RECORD 548, PAGE 723  
 CITY OF BELLEFONTAINE  
 LAKE TOWNSHIP  
 LOGAN COUNTY, OHIO

SURVEYED BY:

*Jeffrey I. Lee*  
 JEFFREY I. LEE  
 PROFESSIONAL SURVEYOR 6359  
 JUNE 19, 2006



ORIGINAL STAMP IN GREEN

COPYRIGHT 2006 BY:  
 LEE SURVEYING & MAPPING CO., INC.  
 117 North Madriver Street  
 BELLEFONTAINE, OHIO 43311  
 (937) 593-7335

ADW D0606 4258066 L-4258066-3

2 WORKING DAYS  
**BEFORE YOU DIG**  
 CALL TOLL FREE **800-362-2764**  
 OHIO UTILITIES PROTECTION SERVICE.

INDEXED ON MAP  
2202 IP

Survey of the south line of  
the north half of lots 240 and 243  
for the Episcopal Church Trustees

524.6

N

SANDUSKY AVE

MAD RIVER ST

PEAK ST

COLUMBUS AVE

INDEXED ON MAP

2202 2P

store



15  
10  
5  
10  
15  
20  
25  
30  
35  
40  
45  
50  
55  
60  
65  
70  
75  
80  
85  
90  
95  
100



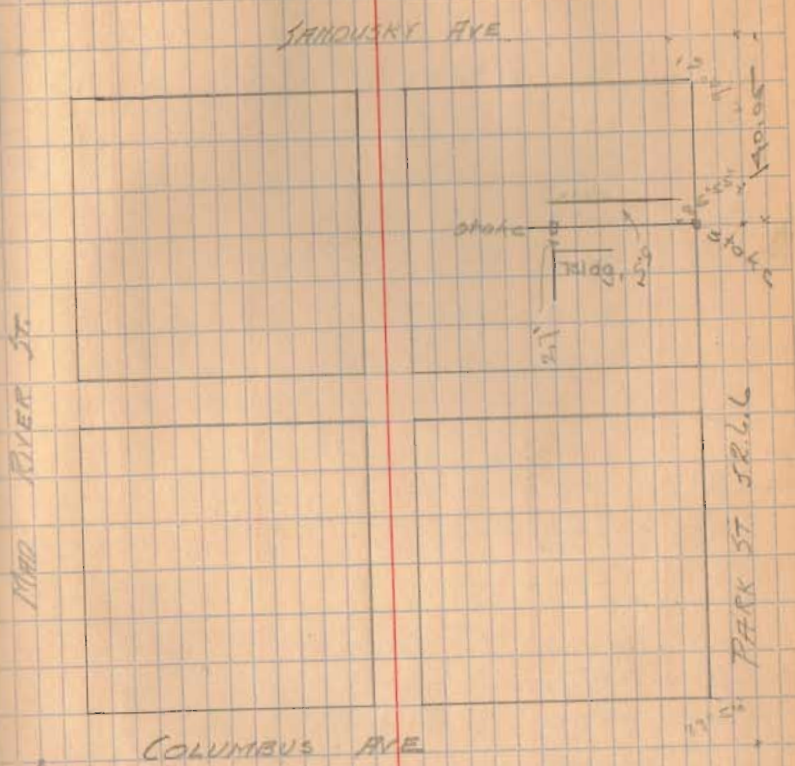
19 20

Survey of the south line of  
the north half of lots 240 and 243  
for the Episcopal Church Trustees

C.H.  
Prestiss Castle 21

526.6

11



INDEXED ON MAP

2202