

3-30
5-30
7-30
17-30

5 $\frac{119}{102}$ $9 \frac{1}{2} \frac{1}{2}$

SURVEY OF PART OF LOTS 239
FOR H. L. WILCOX
Bellevue Ohio.

$\frac{40}{270}$
 $\frac{260}{90}$
 $\frac{170}{0.11}$

On Sandusky Mad River to Park
Plot 501.5
Measured 498.50
 $\frac{41300}{75}$

$\frac{169.89}{40}$
 $\frac{209.19}{50}$
 $\frac{259.89}{50}$

On Columbus Mad River to Park
Plot 501.5
Measured 500.20
short $\frac{11.34}{.31}$

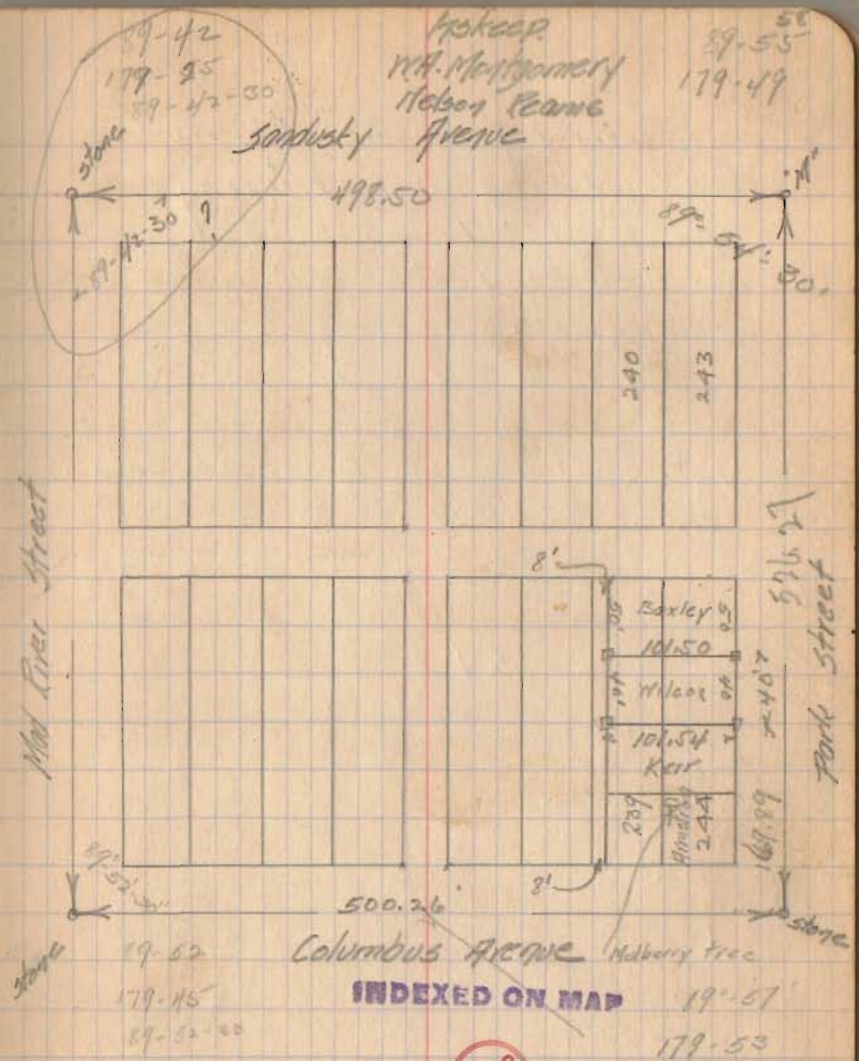
$\frac{.31}{.15}$
 $\frac{.46}{.04}$
 $\frac{.50}{.50}$

On Park Columbus to Sandusky
Plot 576.5
Measured 576.27
short .23

On Mad River Columbus to Sandusky
Plot 526.5
Measured

Measure N. m of Park from E. Co. 169.89
and bear of W. angle 90° - at 209.19 bear 91°
Measure East 15' and + 101.54 m S. line to land
Set 2"x2"x1'-0" pine stakes shown thus \square

Measure west 15' and + 101.50 m N. line of Wilcox



W. H. Montgomery
Nelson Reame
Sandusky Avenue

89-55
179-49

498.50

240

243

89-54-30

Mad River Street

Park Street

500.26

Columbus Avenue

Malberry tree

INDEXED ON MAP

2229

$\frac{20}{576}$

$\frac{9-00}{19-56-30}$

$\frac{70}{500}$

$\frac{.44}{170}$

$\frac{20}{576}$

$\frac{.25}{.352}$

$\frac{.55}{.47}$

$\frac{3080}{44}$
 $\frac{57480}{149}$

$\frac{101.54}{102.46}$