

115. C.H. Hooper
Milo Roney 9-17-23

$\frac{2110.8}{1.54} = 234.46$
 $\frac{17.5}{2.50} = 7.0$

Survey of wharf of N.
half of Lot 15th in
Pikefontaine for John Hartzler

$\frac{270}{15} = 18$
 $\frac{235}{15} = 15.67$

$\frac{128}{2.82} = 45.4$
 $\frac{2410}{2.05} = 1175.6$
 $\frac{0.51}{1} = 0.51$

On Main Chillicothe to Hubery
Plot 516.50

(City Eng. Records Main) Measure 515.00
Short 1.50 $\frac{516.05}{9/17/23}$

On Mad River Chillicothe to Hubery
Plot 516.50
(City Eng. Record $\frac{516.85}{516.80}$) Measure 516.84
Short .04

On Chillicothe Main to Mad River
Plot 526.50
City Eng. Record 525.15 Measure 525.23
Short 1.28

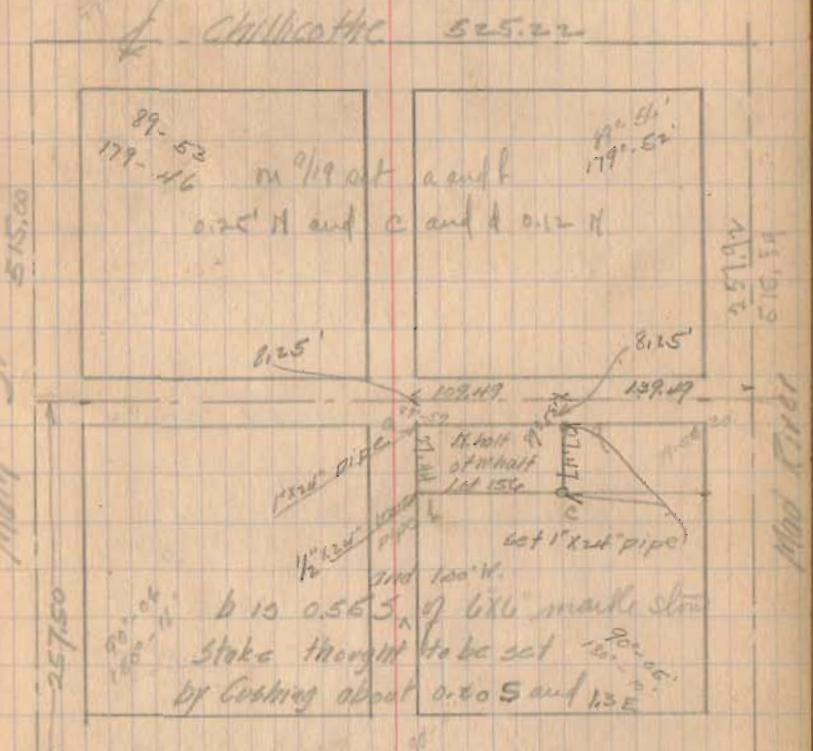
On Hubery Main to Mad River
Plot 526.50
(City Eng. Record 523.64) Measure 523.69
Short 2.81



90°-01
89-55-20
79-56-30
69-59-15
N.

89-53
87-56
90-05
30-5-30
359-59-30
N.

30
170
190
51
49.24
129.49



Hubery 523.68
INDEXED ON MAP
2238
9/19/23
Chain H.W. on lot 15th
as set 9/17 234.6 to N
and Hubery 1.5 and
Chillicothe 252.45