

July 7, 1933

C. A. Inskoop
J. S. Crone
J. H. Inskoop

Survey for Geo. S. Middleton
Lot 602 and Part of 601
Bellefontaine Ohio

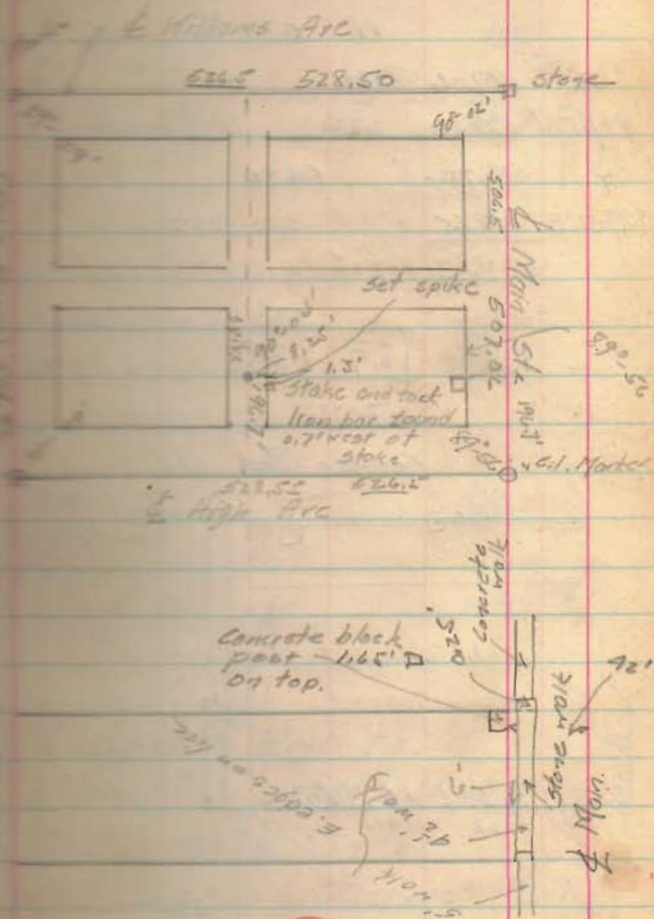
Set $\frac{1}{4}$ Alley on Williams
from $\frac{1}{4}$ Main $40 + 220 + 8^{25} + 10 = 269^{25}$

Set $\frac{1}{4}$ Alley on High
from $\frac{1}{4}$ Detroit $30 + 220 + 8^{25} + 1.03 = 259^{25}$

Length of stone walk in front
of Middleton's W. 3'

N. side of \square Post to S. side
of Middleton's wall W. 2'

S. end of stone walk of
Middleton to N. side of old
drive to street 1.5'



2260

INDEXED ON MAP

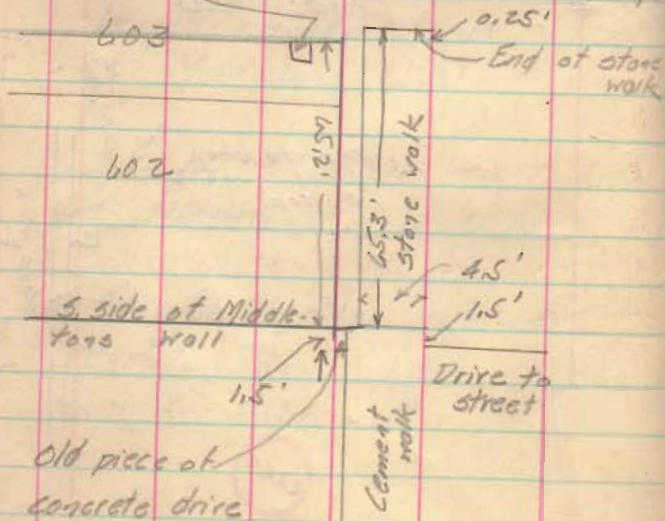
	N.	S	E	W.
N.	507.06	507.06		
189-58N	528.50	0.32		528.50
S	506.92	506.92		
589-56E	528.55	0.63	528.55	
	2071.03	507.38	507.55	528.50

Error.

$$\sqrt{0.17^2 + 0.05^2} = 1 \text{ in } 11,700$$

2071.

Concrete Post 1.6' x 1.6' on top



Set 16d spike

Facing stake and face

22/103'

602

603

604

High Arc

Distance \perp High to N line of concrete post 196.7

Plot + distribution of excess = $20 + 165.21 + 10 = 195.21$

Post sets 1.5' N. of line as called for in deeds.

Main St North