

G.A. Inskeep July 27, 1927
G.C. Inskeep

Survey of Part of Lots
Bellevue
for D.W. Askrey

Plot dist on Detroit & Columbus to $\frac{1}{2}$ Sandusky	526.5
Measure	524.98
Measure N 525.00 Short	1.52
" 5 524.96	
524.98	

Deed to
Vol. Page
20' x 109' - 8 1/2"

Previous deeds for N. part of
Lot show 125' - 15' = 110' off
the N. end.

$$110' - \frac{1.52}{2} = 109.74$$

$$89^{\circ}-54' \quad 10-05' = 0.045 \text{ in } 30'$$

$$89-49' \quad = 0.075 \text{ in } 50'$$

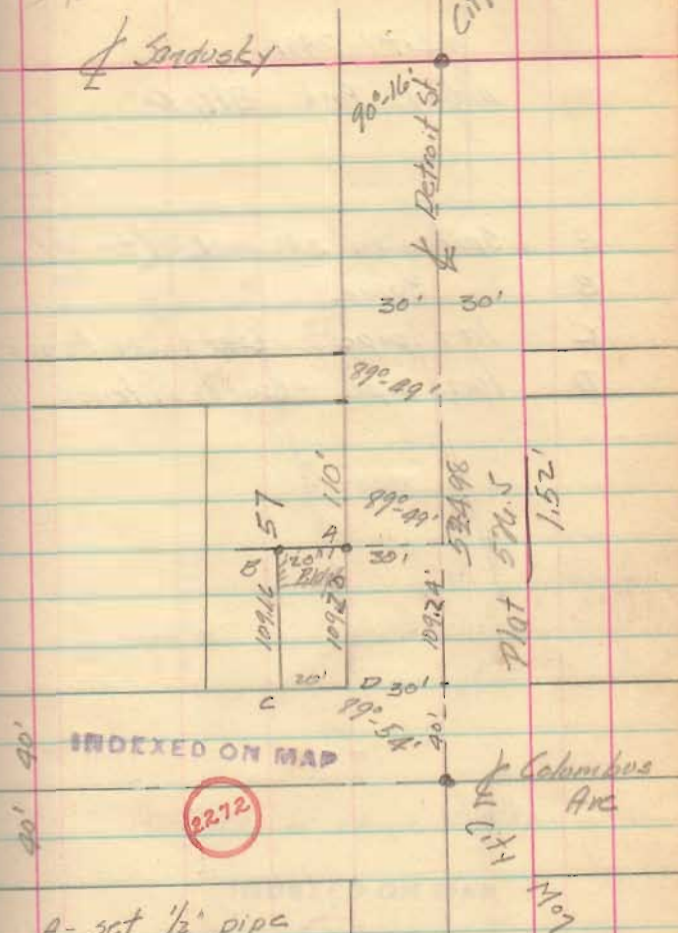
$$10-05'$$

For angle at Cols & Det and at Sand
and Det see Book A Page 21
Survey of April 2 and 5 1912

109.24
109.29

24
32

$\frac{1}{2}$ Sandusky



A - set 1/2" pipe

B - set 5/8" pipe

C - ↑ scratched of water table

D + on step (Frozer Drug Store)

City No. 38

Columbus Ave
City
Mo