

Scale: 1" = 40'

- SYMBOLS:
- - Pony Spike Set.
 - - 5/8" x 30" Rebars Set.
 - - 3/4" Round Iron Bars Fd.
 - ⊗ - 1" Iron Pipes Fd.

Reference:
 Gardner's 4th. Addition (10-16-1882).
 Plat Cabinet A Slide 17.

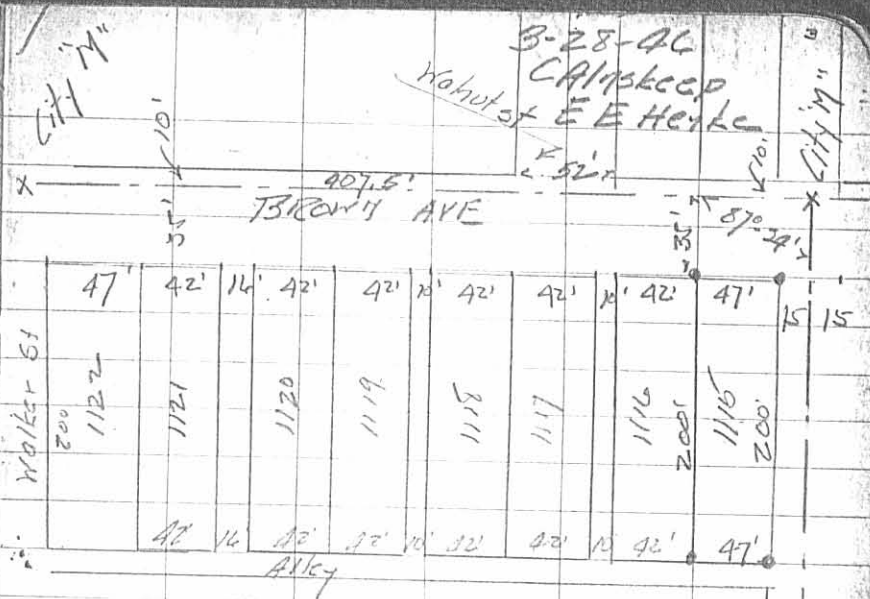
INDEXED ON MAP
 2296 1P



Survey of Lots No. 1115-1116 City of Bellefontaine, Lake Township, Logan County, Ohio.		
SCALE: 1" = 40'	APPROVED BY:	DRAWN BY: DEG
DATE: 10-17-2001		REVISED:
<i>Daniel E. Gilbert</i> Daniel E. Gilbert, P.S. Reg. Sur. No. 5402		DRAWING NUMBER 2001-039

Survey of Lot 1115
 Beltsfontaine for
 D.W. Askrey - John Grobner

INDEXED BOOK 12



Set $\frac{3}{4}$ " x 24" iron bar at
 four corners of lot as
 shown

City M'
 Pratt &
 Sandusky

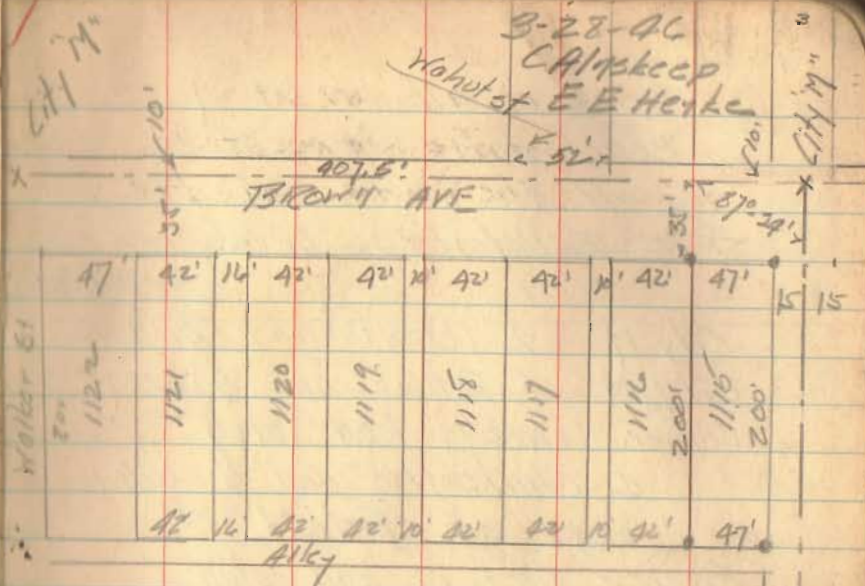
Gardner's 4th Addition
 City Engineer's measurements
 Pratt to Walnut 182.4
 Walnut to Walker 224.9

INDEXED ON MAP

407.3'

2296 2P

Survey of Lot 1115
 Belkfortaine for
 D.W. Askrey - John Grabel



Set $\frac{3}{4}$ " x 24" iron bar at
 four corners of lot as
 shown

City "M"
 & Pratt Co
 & Sandusky

Gardner's 4th Addition
 City Engineer's measurements
 Pratt to Walnut 182.4
 Walnut to Walker 224.9
 407.3

INDEXED ON MAP

2296