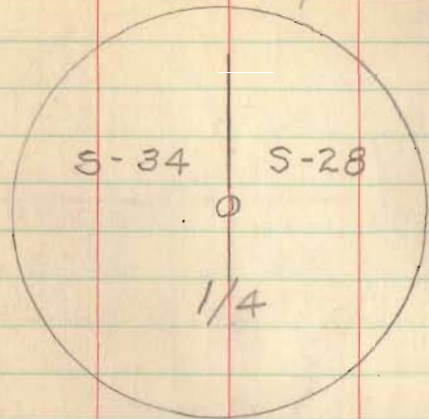


Sept 22/42

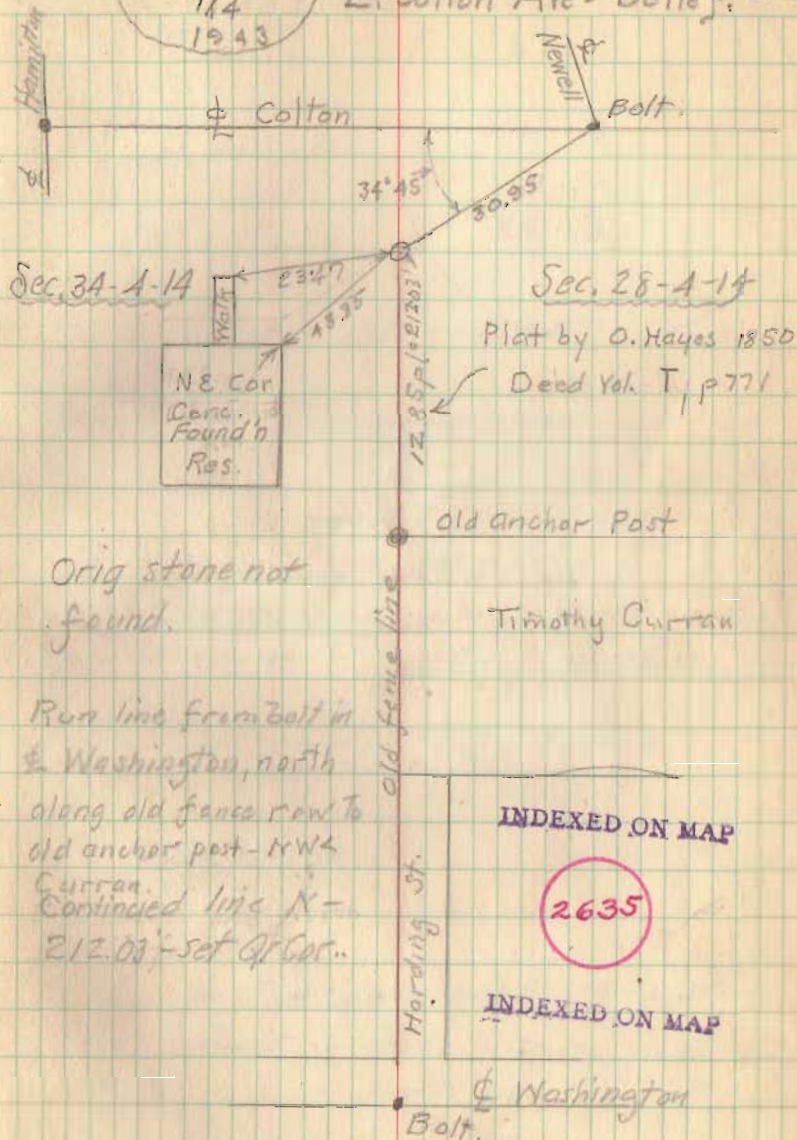
Dalley
Dyset
Burket
Krief



Set mon - full length
9" Below surface

T4 R14
S-34 S-28
1/4
1943

E. Colton Ave - Bellef. 2 1/2



Orig stone not
found.

Run line from Bolt in
E. Washington, north
along old fence row to
old anchor post - RW
Curran.
Continued line N -
212.03 - set of Cor.

INDEXED ON MAP

2635

INDEXED ON MAP