

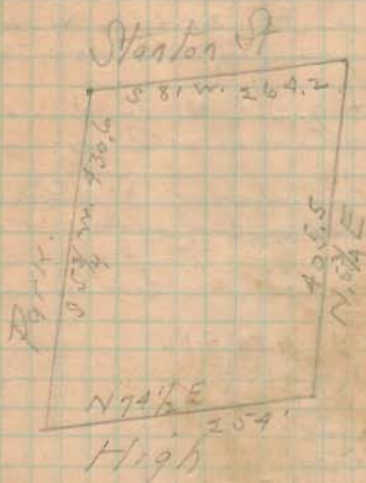
Set up at Park + Stanton
bearing Stanton N 81° E.

Park St 85° S 87/4 W. 430.6'

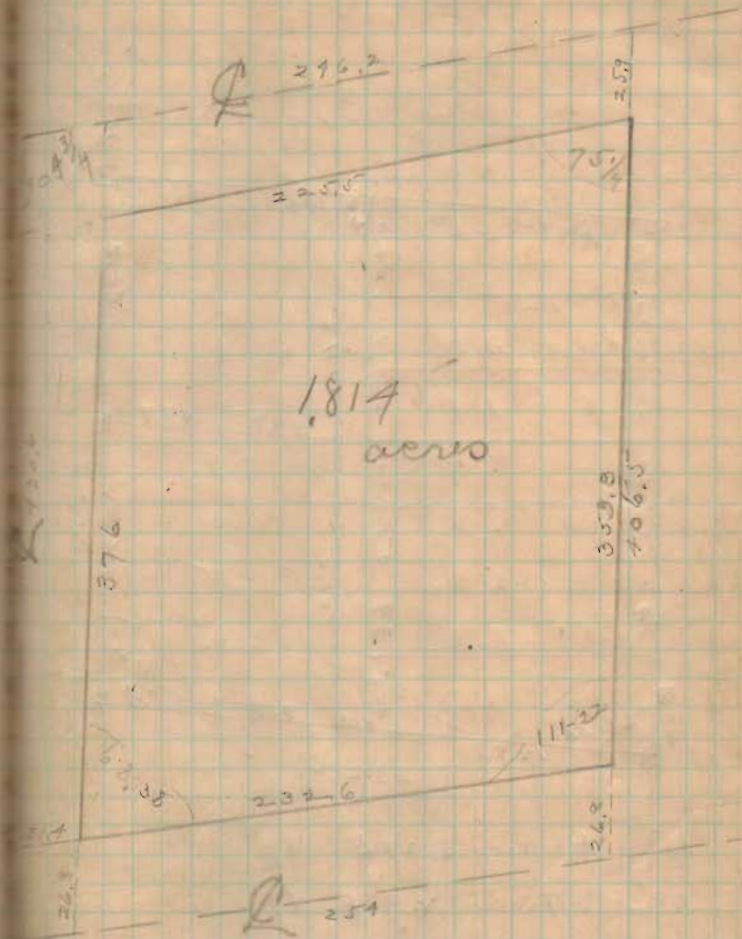
High St N 74 1/2° E. 254'

East corner land N 5 1/4° E 405.5'

Stanton S 81° W. 296.2' to begin

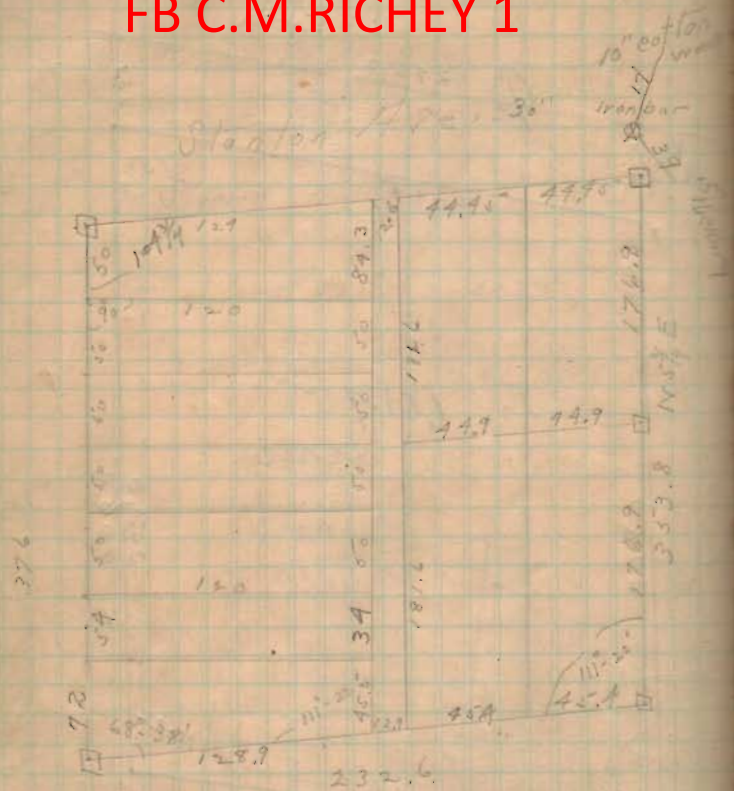


2751



FB C.M. RICHEY 1

FB C.M. RICHEY 1



13" Hickory S. 27 E 39'

10" Cottonwood N. 47 E 17'

2751