

Shirk 1957

THE GILESPIE SURVEY

Being situated in Section 5, Town 3, Range 14 of Harrison Township; Logan County, Ohio.

Beginning at the south west corner of section 5; thence following the South line of said section 5 (the south line is also the center of State Route #47) N 88° 41' E 1368.7 feet to the place of beginning for this description.

Thence North 760.5 feet with the east line of Homer H. Fuson's 39.67 acre tract to a corner post passing through a corner post at 30.0 feet; thence N 89° 46' E 257.6 feet to a corner post; thence S 0° 07' E 574.4 feet to a corner post; thence N 87° 39' E 37.7 feet to a corner post; thence S 0° 59' E 181.8 feet to the center of State Route #47, passing through a corner post at 151.8 feet; thence S 88° 41' W 299.6 feet with State Route #47 to the place of beginning.

Containing 4.66 acres more or less.

on Plat Book

1368.7
299.6
1668.3

2795

110

PETERS SURVEY

March, 1974

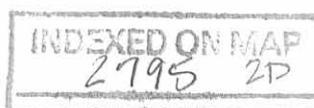
The following described real estate situated in Section 5, Town 3, Range 14, Bellefontaine, Ohio and being more particularly described as follows:

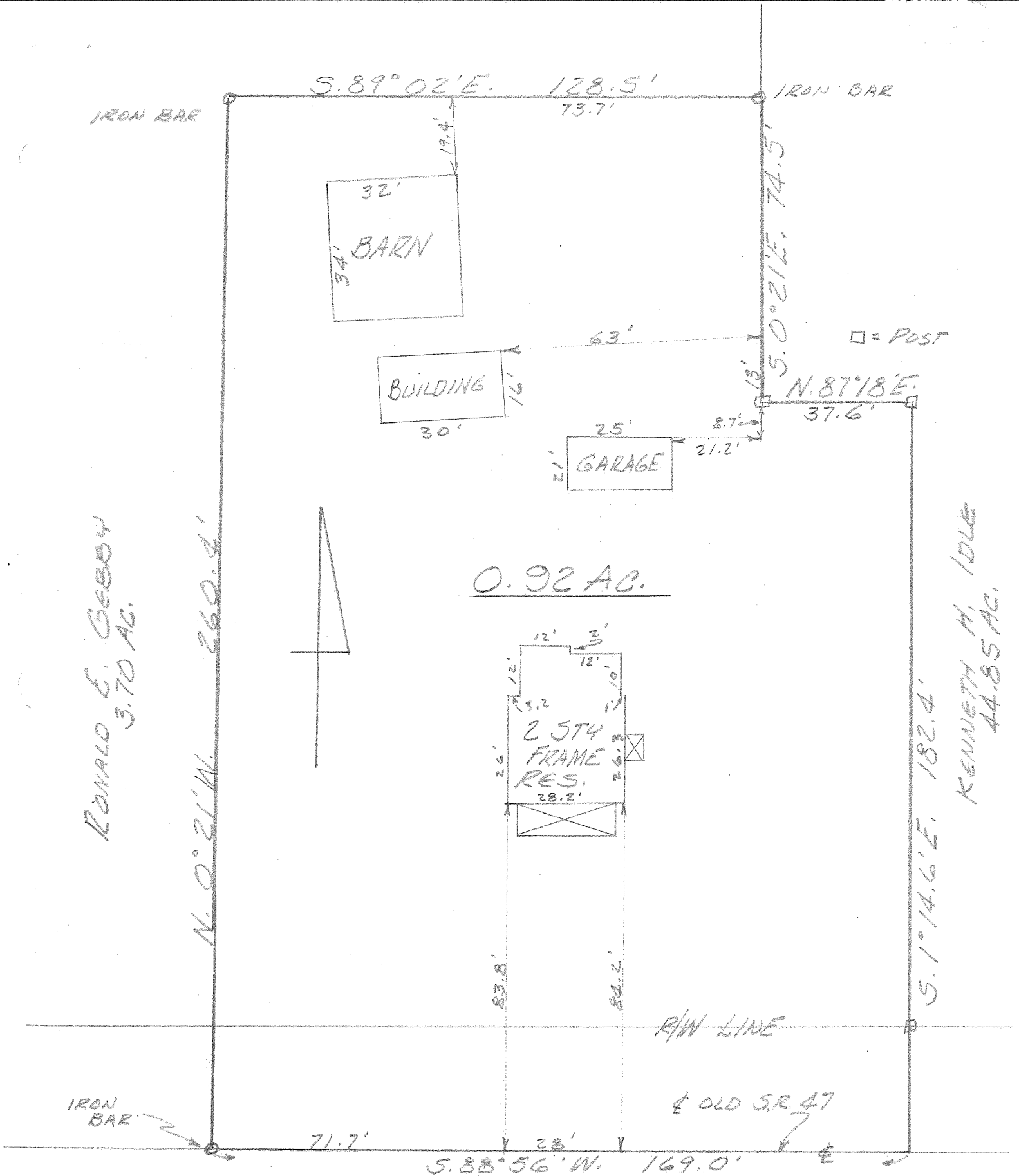
Beginning at an iron bar in the centerline of old S.R. 47 at the southeast corner of Ronald E. Gebby's 3.70 acre tract; thence with an easterly line of said Gebby N.0°21'W. 260.4 feet to an iron bar; thence with a southerly line of said Gebby S.89°02'E. 128.5 feet to an iron bar in the west line of Kenneth H. Idle's 44.85 acre tract; thence with said Idle's west line S.0°21'E. 74.5 feet to a corner post; thence with a southerly line of said Idle N.87°18'E. 37.6 feet to a corner post; thence with said Idle's west line S.1°14.6'E. 182.4 feet to a point in the centerline of old S.R.47; thence with said centerline S.88°56'W. 169.0 feet to the place of beginning.

Containing 0.92 acres more or less.

I hereby certify that the above is a true and accurate description of a survey made by me.

Leslie H. Geeslin
Reg. Surveyor No. 5248





RONALD E. GEBBY
3.70 AC.

KENNETH H. IDLE
44.85 AC.

HEREBY CERTIFY THAT
THE IMPROVEMENTS ARE
AS SHOWN.

PETERS SURVEY
S. 5 T. 3 R. 14
BELLEFONTAINE, OHIO
SCALE 1" = 30'
MARCH, 1974

LESLIE H. GRESLIN
REG. SURVEYOR 5248

G-566

GOUGH SURVEY

The following described real estate situated in Section 5, Town 3, Range 14, Bellefontaine, Ohio and being more particularly described as follows:

Beginning at an iron bar in the centerline of old S.R.47 at the southeast corner of Lola M. Fuson's 39.67 acre tract; thence with said Fuson's east line north 755.8 feet to an iron bar at a westerly corner of Kenneth H. Idle's 44.85 acre tract; thence with said Idle's line N.89°56'E. 254.7 feet to a corner post; thence with another of said Idle's lines S.0°21'E. 498.5 feet to an iron bar; thence N.89°02'W. 128.5 feet to an iron bar; thence S.0°21'E. 260.4 feet to an iron bar in the centerline of old S.R.47, said centerline being the south line of Section 5; thence with said section line S.88°56'W. 130.8 feet to the place of beginning.

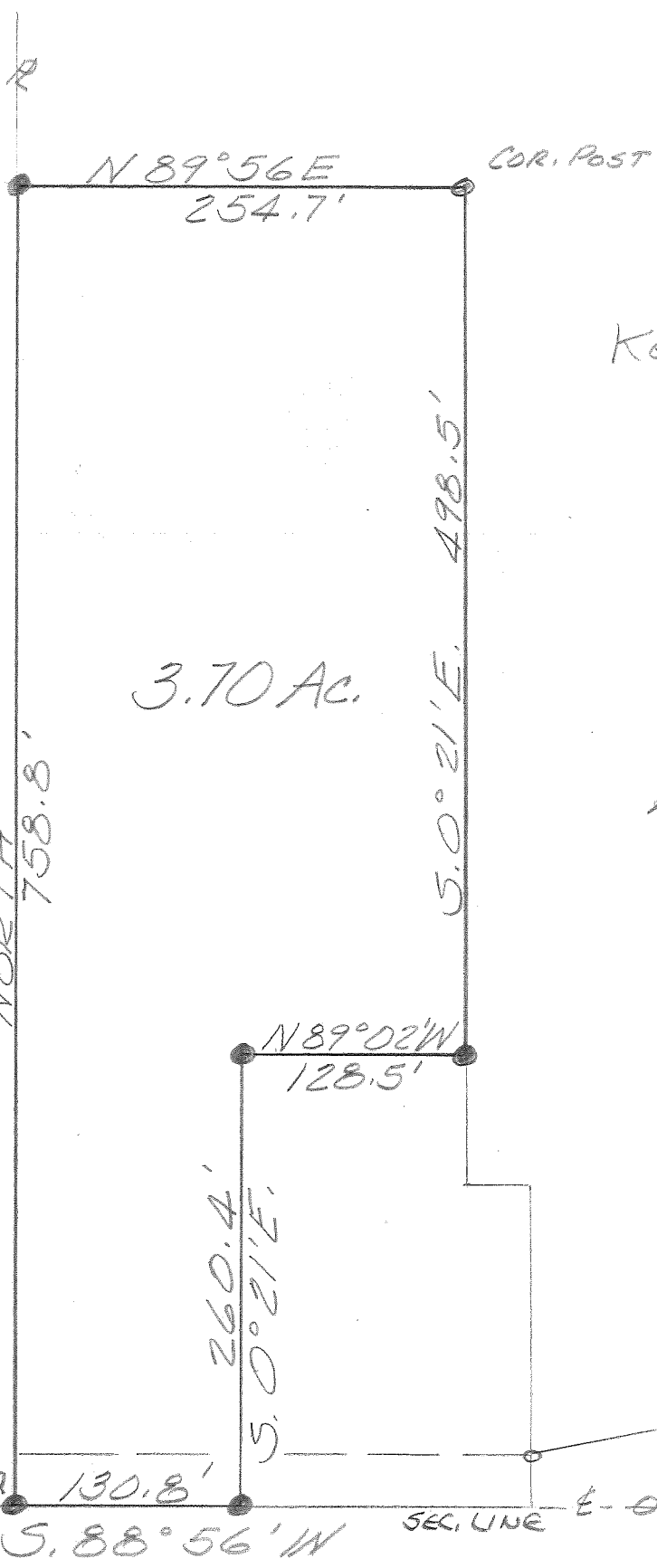
Containing 3.70 acres more or less.

The above described 3.70 acres being part of Robert D. Gough's 4.60 acre tract.

LOLA M. FUSON ETAL
39.67 AC.



NORTH



3.70 AC.

KENNETH H. IDLE
44.85 AC.

GOUGH SURVEY
SEPTEMBER, 1912
S. 5 T. 3 R. 14
BELLEFONTAINE, OHIO

SCALE 1" = 100'
● = 3/4" IRON BAR

NORTH R/W LINE ↑ 130.8' S. 88° 56' W SEC. LINE E - OLD SR 47

S.R. 47

G-566