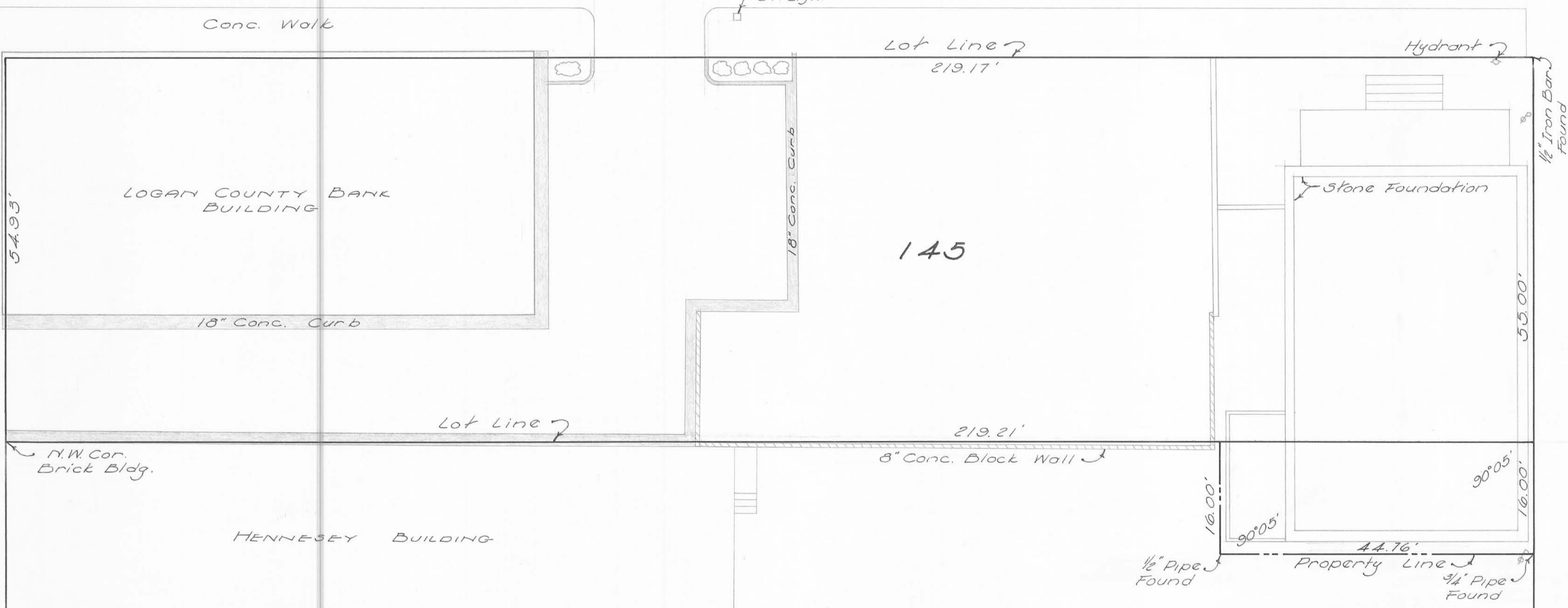


CHILLICOTHE ST. 60'

90°04'

MAIN ST. 80'



SURVEY OF
 LOT 145 - 146 PART
 BELLEFONTAINE, OHIO
 FOR
 THE LOGAN COUNTY BANK
 AUGUST 9, 1962
 SCALE 1" = 10'

Dan L. Dodson
 Dan L. Dodson
 Reg. Surveyor 4270
 Bellefontaine, Ohio